

Gardner-scrub

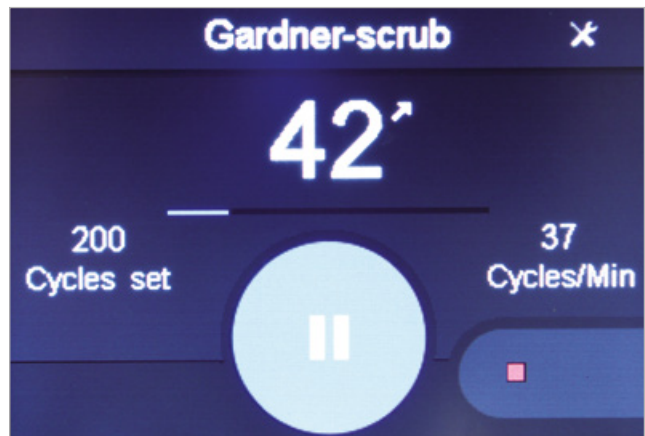
Abrasion Scrub and Washability Tester

Coated and uncoated surfaces need to be tested for resistance to abrasion caused by a brush, sponge, scouring pad, sand paper, and other means. Abrasion resistance can be tested by wet abrasion methods using scrub media or cleaning solutions. The most common applications are testing the scrub resistance of interior wall paints, floor tiles, shower stalls, and furniture surfaces. The abrasion tester can examine the washability of a coated surface for the removal of stains. Detergents and cleaning solutions can be tested and evaluated in a reproducible manner.

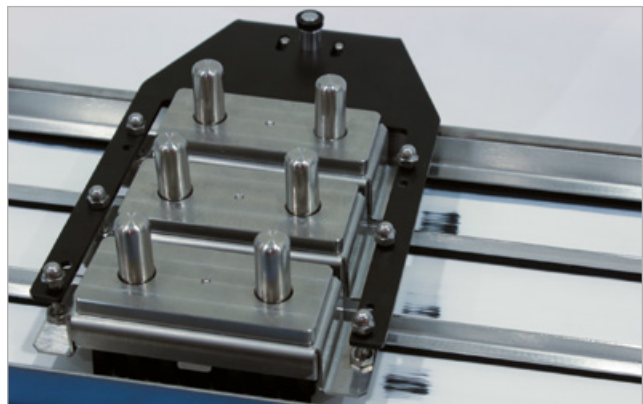
Gardner-scrub Abrasion Tester

The Gardner-scrub abrasion tester offers a versatile design for abrasion and washability testing applications. The instrument arm is designed to hold from 1 - 3 brush holders or ISO pad holders. A large selection of accessories are available to customize your test requirements. An intuitive touch screen operation makes it easy to change test parameters. The Gardner-scrub has a durable chain drive mechanism for long-term reliable operation.

- Reciprocating linear motion with a constant speed over the travel distance for repeatable results
- Compact design saves on counter space
- Easy to use touch screen display
- Instrument arm holds up to 3 brush or pad holders to increase output
- User selectable scrub rate from 6 - 60 cycle/minute
- Compliant with ASTM, DIN, and ISO methods with appropriate accessories
- Up to 4 kg (8.8 lbs) can be applied to the instrument arm
- Adjustable stroke length 22.9 - 27.9 cm (9 - 11 in.)
- Optional weights for custom applications



Gardner-scrub touchscreen display



Gardner-scrub three brush configuration with Lilly Frame

Gardner-scrub

Ordering Information

Cat. No.	Description
5060	Gardner-scrub, base
5061	Gardner-scrub, ASTM D2486
5062	Gardner-scrub, DIN 53778
5063	Gardner-scrub, ISO 11998
5097	Gardner-scrub, ECE 43

***Note:**

For two or three brush or pad holder operation additional brush holders and pad holders must be ordered as accessory items.

Technical Specifications

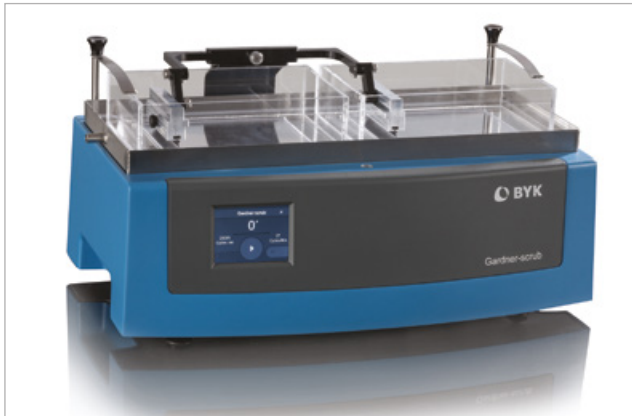
Comes with	
Instrument, Sample pan (5041), Scrub panels (5015) Power supply, Manual	
Base model (5060), 1-Brush holder w/mat (5074), Nylon brush (5011), Lilly frame (5038), Brass shim (6979), Glass plate (6980), Scrub panels (5015)	
Base model (5060), 1-Brush holder w/mat (5075), Hog Brush (5010), Liquid metering system (5037), Glass plate (6980), Scrub panels (5015)	
Base model (5060), 1-Pad holder (5076), Scotch brite pads (5012), 1-ISO Arm adapter (5059), Glass plate (6980), Scrub panels (5015)	
Instrument, 2-Acrylic boxes, 2-Wiper holders, 2-Space plates 2mm, 2-Space plates 4mm, 4-pre-cut wiper blades, 200g scale, Sample pan	
Voltage	100 - 240 V, 50/60 Hz
Dimensions	48.3 x 27.9 x 19.1 cm (19 x 11 x 7.5 in.)
Weight	14.5 kg (32 lbs)
Scrub Rate	6 - 60 cycles/minute
Stroke Length	25.4 cm (10 inch) standard setting* 22.9 cm (9 inch), 27.9 cm (11 inch) optional settings* 13.0 cm (5.1 inch) - ECE 43 version only (5097)

***Note:**

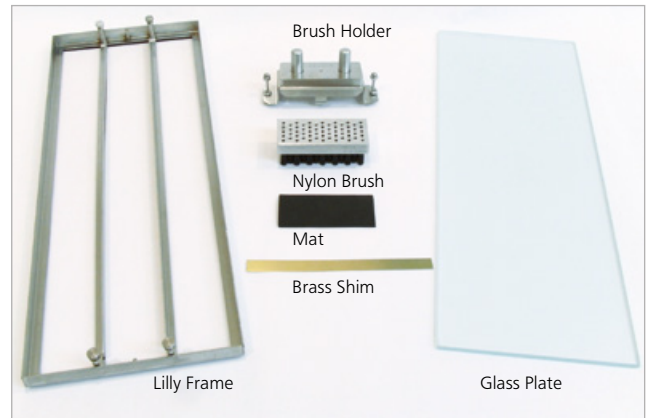
Stroke length is measured from the center brush location. To measure the stroke length from the brush end, add 8.9 cm (3.5 inches) to the center stroke length.

Optional stroke lengths must be set by local service center.

New!



Gardner-scrub, ECE 43



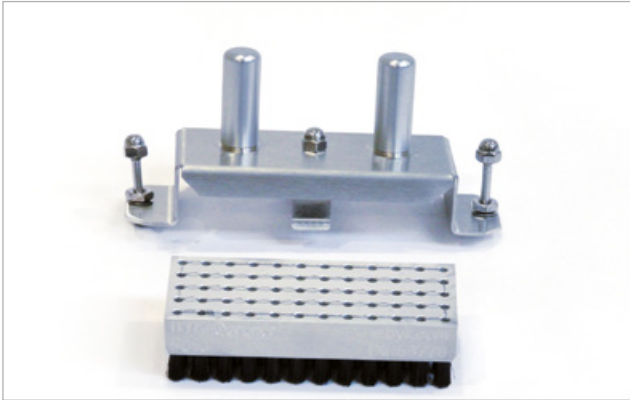
ASTM D 2486 Accessories



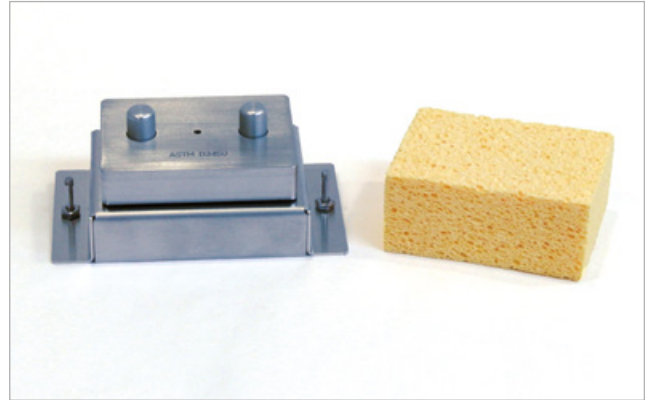
ISO Method Accessories

Gardner-scrub

Accessories



DIN Brush Holder (5075) and DIN Brush (5010)



Sponge Holder (5073) and Sponge (8116) for ASTM D3450 and D4828

Ordering Information

Cat. No.	Description
5064	Accessory Kit, ASTM D 2486
5065	Accessory Kit, ISO 11998
5066	Accessory Kit, DIN 53778
5067	Accessory Kit, ASTM D 4213
5068	Accessory Kit, ASTM D 4828
5069	Accessory Kit, ASTM D 3450
5074	Brush Holder and Mat, ASTM
5075	Brush Holder and Mat, DIN
6979	Brass Shim
5011	Nylon Brush
5010	Hog Bristle Brush, DIN
5038	Lilly Frame
5037	Liquid Metering System
5093	Holding Clamp/Burette Assembly with Holding Clamp
5012	Scotch Brite Pads (pk of 50)
5076	ISO Pad Holder
5059	ISO Arm Adapter
5019	Replacement Mat
5098	ISO Standard Dirt
5099	Wiper Blades, 25 pcs.

Accessories

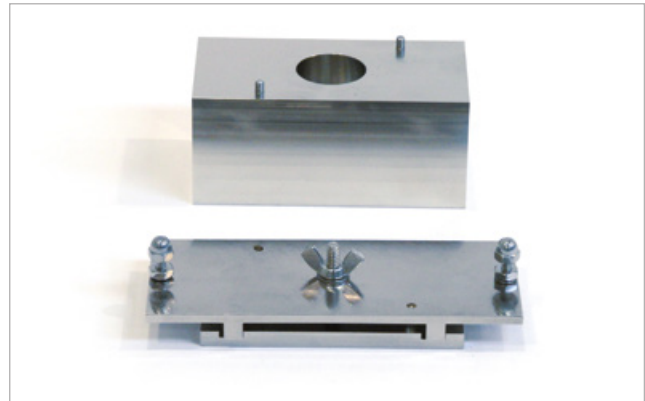
Information
Includes: ASTM brush holder & mat (5074), Nylon brush (5011), Lilly frame (5038), Brass shim (6979), Glass plate (6980)
Includes: 1-Pad holder (5076), ISO Arm adapter (5059), Scotch brite pads (pk of 50) (5012), Glass plate (6980)
Includes: DIN Brush holder & mat (5075), Hog bristle brush (5010), Liquid metering system (5037), Glass plate (6980)
Includes: Sponge holder 450g (5072), Polyurethane sponge (5071), Scotch brite pad (5070), Lilly frame (5038), Glass plate (6980)
Includes: Sponge holder 1000g (5073), Sponge (8116), Glass plate (6980)
Includes: Sponge holder 1000g (5073), Weight 500g (5078), Sponge (8116), Glass plate (6980)
Needed for ASTM D 2486, Dimensions: 1.5 x 3.5 inches (38.1 x 88.9 mm)
Needed for DIN 53778
Needed for ASTM D 2486
Needed for ASTM D 2486
Needed for DIN 53778
Needed for ASTM D 2486; Designed for 1, 2, or 3 brush operation
Needed for DIN 53778; consists of stand, burette assembly, Glass tube, stop cock, clamp
Needed for 2 or 3 brush operation
Needed for ISO 11998
Needed for ISO 11998
Needed for ISO 11998, can hold up to 3 pad holders (5076)
For brush holder 5074, 5075
4.4 liters (1.0 gallon) dry, ISO 12103-1, A4. for ECE 43 model (5097)
65 cm (25.6 in.) length per blade, for ECE 43 model (5097)

Gardner-scrub

Accessories



1000 Gram Weight (5073) and 500 Gram Weight (5078)



Sand Paper Holder Weight (8118) and Sandpaper Holder (5058)

Ordering Information

Cat. No.	Description
5072	Sponge Holder, 450g
5073	Sponge Holder, 1000g
5078	Weight, 500g*
5079	Weight, 1000g*
8116	Sponge, cellulosic (each)
5077	Sponge, B, cellulosic (pack of 6)
5071	Sponge, Polyurethane (pack of 6)
5070	Scotch Brite Pad, ASTM
6980	Glass Plate
5041	Sample Pan
8129	Scrub Media, Abrasive 474 ml (1 pint)
8130	Scrub Media, Non-abrasive 474 ml (1 pint)
5015	byko-chart Black Scrub Panels, P121-10N
5016	byko-chart White Scrub Panels, P122-10N
8113	Hog Bristle Brush, ANSI
8111	Hog Bristle Brush
8117	Sandpaper Attachment Kit
5058	Sandpaper Holder
8118	Weight, for Sandpaper Holder
2230	Dow Latex Applicator

***Note:** The weights can not be used with the brush holder (5074) and sponge B (5077) in combination. These weights are not designed for Sandpaper Holder (5058).

Accessories

Information
Needed for ASTM D 4213.
Dimensions: 3.0 x 3.75 x 0.875 inch (76.2 x 95.3 x 22.2 mm)
Needed for ASTM D3450, D4828.
Dimensions: 3 x 3.75 x 1.0 inch (76.2 x 95.3 x 25.4 mm)
Fits on top of Brush and Sponge holders
Fits on top of Brush and Sponge holders
Needed for ASTM D3450, D4828, MPI 138.
Dimensions: 3.0 x 3.75 x 1.5 inch (76.2 x 95.3 x 38.1 mm)
Designed for Brush Holder 5074. Dimensions: 1.5 x 3.5 inch (38.1 x 88.9 mm)
Needed for ASTM D4213. 3.0 x 3.75 inch (76.2 x 95.3 mm)
Needed for ASTM D 4213. Dimensions: 3.0 x 3.75 inch (76.2 x 95.3 mm)
Needed for ASTM, ISO, DIN methods
Replacement; Comes standard with base model
Needed for ASTM D 2486 / ASTM 3450
Needed for ASTM D 3450 / ASTM 4213
Box of 100; Needed for ASTM, DIN, and ISO methods, Dimensions: 165 x 432 x 0.25 mm (6.56 x 17 x 0.01 in.)
Box of 100; Dimensions: 165 x 432 x 0.25 mm (6.56 x 17 x 0.01 in.)
Perforated back for ANSI method Z 124.1; Fits brush holder 5074 & 5075
General use, 3.5 x 1.5 in. (8.9 x 3.8 cm); Fits brush holder 5074 & 5075
Meets method MIL-E-11237 specification; Includes Sandpaper holder, Rubber mat, 10 yards (914 cm) x 2 inch (5.1 cm) of 1/0 and 3/0 emory cloth.
Needed for ASTM D 6736. Designed to hold any flat, thin sheet or cloth-type material with a minimum size of 2 x 5 inch (50.8 x 127 mm). Weight: 1 lb (454 gm)
Weight: 3.5 lbs (1.59 kg)
Needed for ASTM D 2486.