

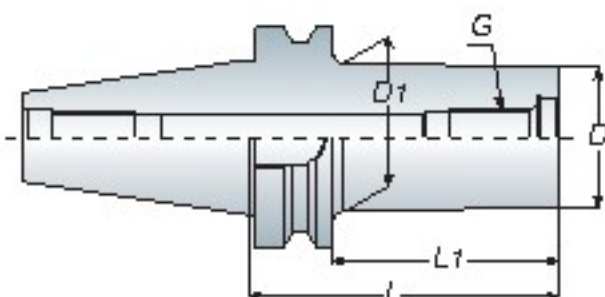
Micro Boring Holder

微調精搪刀桿

ABH

BT / NT

series



Features

- ABH (Rough or Fine) / ABH-SB (Fine) boring head must be ordered separately.
- ABH (粗 / 精搪頭) / ABH-SB 精搪頭為另購品



Model No.	Boring Range		D	D1	L1	L	G	Weight (kg)
	Min.	Max.						
BT3D ABH 18-060	22	32	18	24	40	60	M10x1.5P	0.60
-100	22	32	18	24	80	100	M10x1.5P	0.70
ABH 23-080	28	46	23	29	60	80	M12x1.75P	0.60
-120	28	46	23	29	100	120	M12x1.75P	0.80
ABH 30-080	36	60	30	36	60	80	M16x2.0P	0.80
-130	36	60	30	36	110	130	M16x2.0P	1.10
ABH 40-080	46	80	40	48	60	80	M18x2.5P	1.00
-150	46	80	40	48	130	150	M18x2.5P	1.40
ABH 63-080	70	130	63	63	60	80	M25x2.0P	1.60
-150	70	130	63	63	130	150	M25x2.0P	2.10
BT4D ABH 18-060	22	32	18	24	35	60	M10x1.5P	1.20
-080/100	22	32	18	24	55/75	80/100	M10x1.5P	1.30/1.40
ABH 23-080	28	46	23	29	55	80	M12x1.75P	1.30
-120	28	46	23	29	95	120	M12x1.75P	1.50
ABH 30-080	36	60	30	36	55	80	M16x2.0P	1.40
-105/130	36	60	30	36	80/105	105/130	M16x2.0P	1.50/1.60
ABH 40-080	46	80	40	48	55	80	M18x2.5P	1.50
-105	46	80	40	48	80	105	M18x2.5P	1.90
-125/150	46	80	40	48	100/125	125/150	M18x2.5P	2.10/2.40
ABH-SB 50-080	55	73	53	53	55	80	M22x2.5P	1.80
-105/130	55	73	53	53	80/105	105/130	M22x2.5P	2.20/2.60
ABH 63-080	70	130	63	63	55	80	M25x2.0P	2.20
-105/150	70	130	63	63	80/125	105/150	M25x2.0P	2.90/3.70
BT5D ABH 18-080	22	32	18	24	45	80	M10x1.5P	4.00
-120	22	32	18	24	85	120	M10x1.5P	4.20
ABH 23-080	28	46	23	29	45	80	M12x1.75P	3.90
-120	28	46	23	29	85	120	M12x1.75P	4.20
ABH 30-080	36	60	30	36	45	80	M16x2.0P	4.10
-105/130	36	60	30	36	70/95	105/130	M16x2.0P	4.20/4.40
ABH 40-080	46	80	40	48	45	80	M18x2.5P	4.20
-105/125	46	80	40	48	70/90	105/125	M18x2.5P	4.40/4.80
-150/180	46	80	40	48	115/145	150/180	M18x2.5P	5.20/5.40
ABH-SB 50-080	55	73	53	53	45	80	M22x2.5P	4.50
-105/125	55	73	53	53	70/90	105/125	M22x2.5P	4.90/5.10
-150/180	55	73	53	53	115/145	150/180	M22x2.5P	5.70/6.00
ABH 63-080	70	130	63	63	45	80	M25x2.0P	4.50
-105	70	130	63	68	70	105	M25x2.0P	5.30
-150/180	70	130	63	68	115/150	150/180	M25x2.0P	6.70/7.50
-200/230	70	130	63	68	165/195	200/230	M25x2.0P	8.00/8.40
ABH 83-080	90	160	83	83	45	80	-	4.80
-105	90	160	83	58	70	105	-	5.80
-150/210	90	160	83	63/83	115/175	150/210	-	6.30/6.90

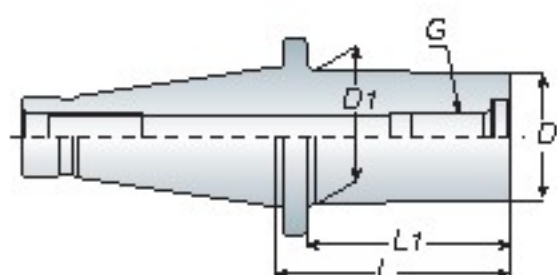
Unit: mm

BT / NT
series

ABH

Micro Boring Holder

微調精搪刀桿



Features

- ABH (Rough or Fine) / ABH-SB (Fine) boring head must be ordered separately.
- When ordering, please specify the draw bolt with inch size or metric size.
- ABH (粗 / 精搪頭) / ABH-SB 精搪頭為另購品
- 請於訂購時，確認刀桿為英制或公制



Model No.	Boring Range		D	D1	L	L1	G	Draw Bolt
	Min.	Max.						
NT30 ABH 18-060	22	32	18	24	76	60	M10x1.5P	1/2" -12 M12x1.75P
ABH 18-100	22	32	18	24	116	100	M10x1.5P	
ABH 23-080	28	46	23	29	96	80	M12x1.75P	
-120	28	46	23	29	136	120	M12x1.75P	
ABH 30-080	36	60	30	36	96	80	M16x2.0P	
-130	36	60	30	36	146	130	M16x2.0P	
ABH 40-080	46	80	40	48	96	80	M18x2.5P	
-150	46	80	40	48	166	150	M18x2.5P	
ABH 63-080	70	130	63	-	96	80	M25x2.0P	
-150	70	130	63	-	166	150	M25x2.0P	
NT40 ABH 18-060	22	32	18	24	76	60	M10x1.5P	5/8" -11 M16x2.0P
-100	22	32	18	24	116	100	M10x1.5P	
ABH 23-080	28	46	23	29	96	80	M12x1.75P	
-120	28	46	23	29	136	120	M12x1.75P	
ABH 30-080	36	60	30	36	96	80	M16x2.0P	
-130	36	60	30	36	146	130	M16x2.0P	
ABH 40-080	46	80	40	48	96	80	M18x2.5P	
-150	46	80	40	48	166	150	M18x2.5P	
ABH 63-080	70	130	63	63	96	80	M25x2.0P	
-150	70	130	63	63	166	150	M25x2.0P	
NT50 ABH 18-060	22	32	18	24	96	60	M10x1.5P	1" -8 M24x3.0P
-100	22	32	18	24	136	100	M10x1.5P	
ABH 23-080	28	46	23	29	96	80	M12x1.75P	
-120	28	46	23	29	136	120	M12x1.75P	
ABH 30-080	36	60	30	36	96	80	M16x2.0P	
-130	36	60	30	36	146	130	M16x2.0P	
ABH 40-080	46	80	40	48	96	80	M18x2.5P	
-150	46	80	40	48	166	150	M18x2.5P	
-220	46	80	40	48	236	220	M18x2.5P	
ABH 63-080	70	130	63	68	96	80	M25x2.0P	
-150	70	130	63	68	166	150	M25x2.0P	
-230	70	130	63	68	246	230	M25x2.0P	
ABH 83-080	90	160	83	68	96	80	-	
-130	90	160	83	70	146	130	-	
-200	90	160	83	-	216	200	-	

Unit: mm

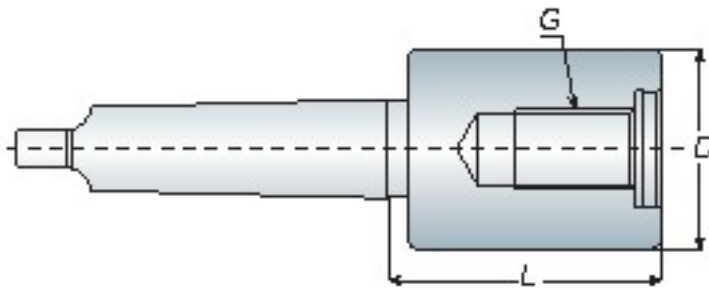
Micro Boring Holder

微調精搪刀桿

ABH

BT / NT

series



Features

- ABH (Rough or Fine) / ABH-SB (Fine) boring head must be ordered separately.
- ABH (粗 / 精搪頭) / ABH-SB 精搪頭為另購品



Model No.	Boring Range		D	L	G
	Min.	Max.			
MTA4 ABH 18-060	22	32	18	60	M10x1.5P
-100	22	32	18	100	M10x1.5P
ABH 23-080	28	46	23	80	M12x1.75P
-120	28	46	23	120	M12x1.75P
ABH 30-080	36	60	30	80	M16x2.0P
-130	36	60	30	130	M16x2.0P
ABH 40-080	46	80	40	80	M18x2.5P
-150	46	80	40	150	M18x2.5P
ABH 63-080	70	130	63	80	M25x2.0P
-150	70	130	63	150	M25x2.0P
MTA5 ABH 18-080	22	32	18	80	M10x1.5P
-120	22	32	18	120	M10x1.5P
ABH 23-080	28	46	23	80	M12x1.75P
-120	28	46	23	120	M12x1.75P
ABH 30-080	36	60	30	80	M16x2.0P
-130	36	60	30	130	M16x2.0P
ABH 40-080	46	80	40	80	M18x2.5P
-150	46	80	40	150	M18x2.5P
-220	46	80	40	220	M18x2.5P
ABH 63-080	70	130	63	80	M25x2.0P
-150	70	130	63	150	M25x2.0P
-230	70	130	63	230	M25x2.0P
ABH 83-050	90	160	83	50	-
-130	90	160	83	130	-
-200	90	160	83	200	-
MTA6 ABH 18-080	22	32	18	80	M10x1.5P
-120	22	32	18	120	M10x1.5P
ABH 23-080	28	46	23	80	M12x1.75P
-120	28	46	23	120	M12x1.75P
ABH 30-080	36	60	30	80	M16x2.0P
-130	36	60	30	130	M16x2.0P
ABH 40-080	46	80	40	80	M18x2.5P
-150	46	80	40	150	M18x2.5P
-220	46	80	40	220	M18x2.5P
ABH 63-080	70	130	63	80	M25x2.0P
-150	70	130	63	150	M25x2.0P
-230	70	130	63	230	M25x2.0P
ABH 83-080	90	160	83	80	-
-130	90	160	83	130	-
-200	90	160	83	200	-

Unit: mm