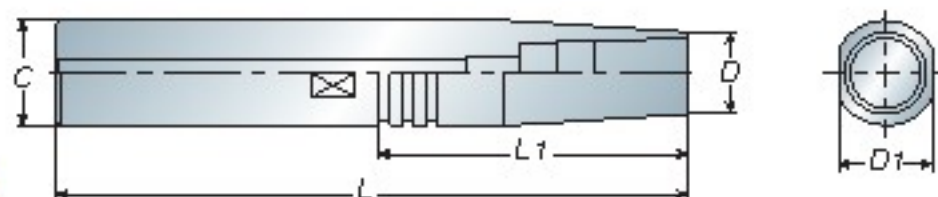


**BT / NT**  
series

**ADS**

## Straight Shank

直柄後拉式夾頭刀桿



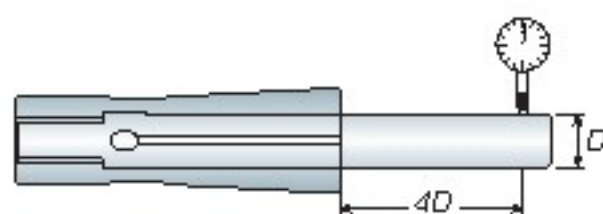
- Wrench is attached for each ADS tool holder.
- 每支 ADS 刀桿均附 1 支扳手

Model No.	Clamping Range	C	D	D1	L1	L	Weight (kg)
C12 ADS06-120	2~6	12	13	10	40	120	0.20
-150	2~6	12	13	10	40	150	0.20
C16 ADS06-150	2~6	16	13	14	38	150	0.20
-200	2~6	16	13	14	38	200	0.25
C20 ADS06-150	2~6	20	16	17	70	150	0.30
-200	2~6	20	13	17	70	200	0.40
ADS08-150	3~8	20	16	17	50	150	0.30
-200	3~8	20	16	17	100	200	0.40
C25 ADS08-150	3~8	25	16	22	50	150	0.45
-200	3~8	25	16	22	100	200	0.60

Unit: mm

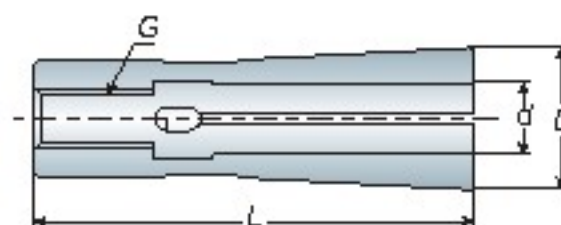


- When ordering, please specify the collet grade with A or AA. For example: ADS12-08AA
- 請於訂購時註明 A 級或 AA 級，例 ADS12-08AA



## Collet

後拉筒夾



Model No.	d	D	L	G	Weight (kg)
ADS06	2, 3, 3.175, 4, 5, 6	9.6	36	M5x0.8P	0.01
ADS08	3, 3.175, 4, 5, 6, 7, 8	12	37	M5x0.8P	0.02
ADS12	3, 3.175, 4, 5, 6, 7, 8, 9, 10, 11, 12	18	63	M8x1.25P	0.07
ADS16	5, 6, 7, 8, 9, 10, 11, 12, 13, 14, 15, 16	24	61	M8x1.25P	0.13

Unit: mm

筒夾等級 Collet Grade	跳動精度 / Runout - Max $\mu$ 4 倍直徑前 - 4xD
A 級	$\leq 10\mu$
AA 級	$\leq 5\mu$