

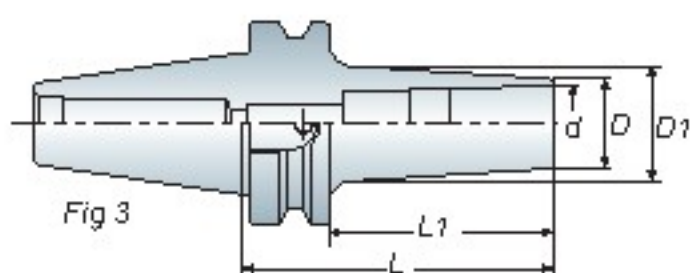
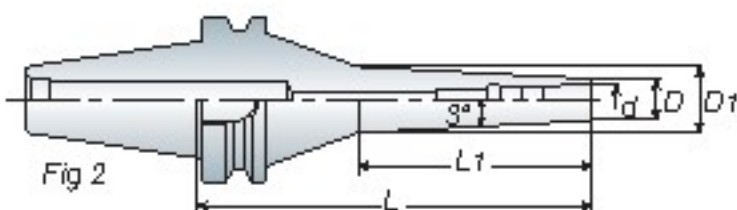
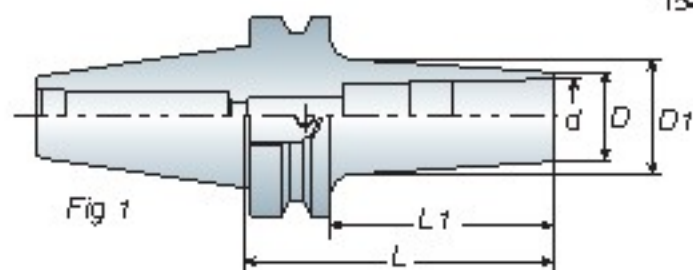
High Speed Collet Chuck

後拉式夾頭刀桿

ADS

BT / NT

series



- ADS06, ADS08: 5mm Hex-Wrench
- ADS12, ADS16: 8mm Hex-Wrench
- ADS06, ADS08 使用 5mm 六角扳手
- ADS12, ADS16 使用 8mm 六角扳手

Features

- ADS tool holder is suitable for high-speed and high precision cutting. Tool holder designed without nut could reduce cutting vibration.
- Wrench is attached for each ADS tool holder.
- Max Speed: 30,000 r.p.m G2.5
- ADS 刀桿適用於高速精密加工。無螺帽設計，降低加工時物件干涉
- 筒夾後拉式設計，操作簡易
- 每支 ADS 刀桿均附 1 支扳手
- 最高轉速可達 30,000 r.p.m G2.5

Model No.	FIG.	Clamping Range (d)	D	D1	L1	L	Weight (kg)
BT30 ADS06-060	2	2~6	13	15.5	26	60	0.50
-090	2	2~6	13	18	50	90	0.60
ADS08-060	1	3~8	16	20.5	40	60	0.50
-075	1	3~8	16	22.5	55	75	0.60
ADS12-080	1	3~12	23	31	60	80	0.65
-110	1	3~12	23	35	90	110	0.90
BT40 ADS06-060	2	2~6	13	16	26	60	1.10
-090	2	2~6	13	17.5	43	90	1.20
-120	2	2~6	13	19.5	60	120	1.30
-150	2	2~6	13	21	76	150	1.50
ADS08-065	1	3~8	16	20	40	65	1.10
-090	1	3~8	16	23	60	90	1.20
-120	1	3~8	16	25.5	80	120	1.30
-150	2	3~8	16	32	90	150	1.50
ADS12-090	1	3~12	23	31	65	90	1.30
-120	1	3~12	23	38	95	120	1.70
-150	2	3~12	23	40	88	150	1.90
ADS16-095	1	5~16	28	35	70	95	1.40
-125	1	5~16	28	38	100	125	1.60
BT50 ADS06-150	1	2~6	13	24	115	150	4.00
ADS08-095	1	3~8	16	23	60	95	3.90
-110	1	3~8	16	25	75	110	3.90
ADS12-100	1	3~12	23	31	65	100	4.10
-150	1	3~12	23	38.5	115	150	4.40
ADS16-100	1	5~16	28	34.5	65	100	4.00
-125	1	5~16	28	35.5	90	125	4.20
BT40 ADS12D-075	3	3~12	30	37.5	50	75	1.60
-090	3	3~12	30	36.6	65	90	1.80
ADS16D-075	3	5~16	40	47.5	50	75	1.70
-090	3	5~16	40	46.5	65	90	1.90

Unit: mm



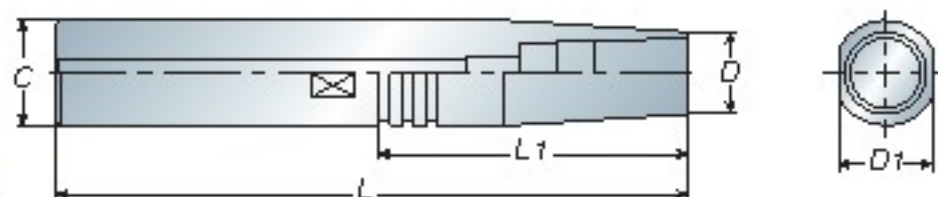
- ADS12 / ADS16 CL type upon your request.
For example: BT40 ADS12-090-CL
- ADS12 / ADS16 另有冷卻液貫穿型可供選擇，請於訂購時於型號後面加 - CL
例 BT40 ADS12-090-CL

BT / NT
series

ADS

Straight Shank

直柄後拉式夾頭刀桿



- Wrench is attached for each ADS tool holder.
- 每支 ADS 刀桿均附 1 支扳手

Model No.	Clamping Range	C	D	D1	L1	L	Weight (kg)
C12 ADS06-120	2~6	12	13	10	40	120	0.20
-150	2~6	12	13	10	40	150	0.20
C16 ADS06-150	2~6	16	13	14	38	150	0.20
-200	2~6	16	13	14	38	200	0.25
C20 ADS06-150	2~6	20	16	17	70	150	0.30
-200	2~6	20	13	17	70	200	0.40
ADS08-150	3~8	20	16	17	50	150	0.30
-200	3~8	20	16	17	100	200	0.40
C25 ADS08-150	3~8	25	16	22	50	150	0.45
-200	3~8	25	16	22	100	200	0.60

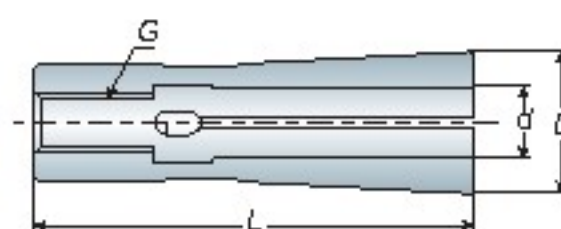
Unit: mm



- When ordering, please specify the collet grade with A or AA. For example: ADS12-08AA
- 請於訂購時註明 A 級或 AA 級，例 ADS12-08AA

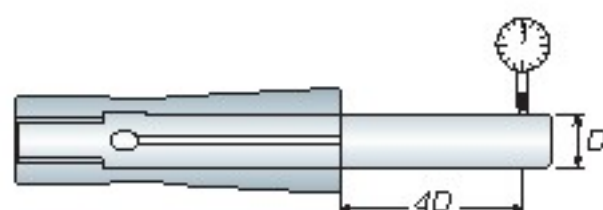
Collet

後拉筒夾



Model No.	d	D	L	G	Weight (kg)
ADS06	2, 3, 3.175, 4, 5, 6	9.6	36	M5x0.8P	0.01
ADS08	3, 3.175, 4, 5, 6, 7, 8	12	37	M5x0.8P	0.02
ADS12	3, 3.175, 4, 5, 6, 7, 8, 9, 10, 11, 12	18	63	M8x1.25P	0.07
ADS16	5, 6, 7, 8, 9, 10, 11, 12, 13, 14, 15, 16	24	61	M8x1.25P	0.13

Unit: mm



筒夾等級 Collet Grade	跳動精度 / Runout - Max μ 4 倍直徑前 - 4xD
A 級	$\leq 10\mu$
AA 級	$\leq 5\mu$