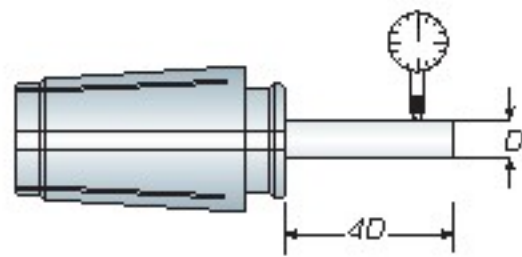
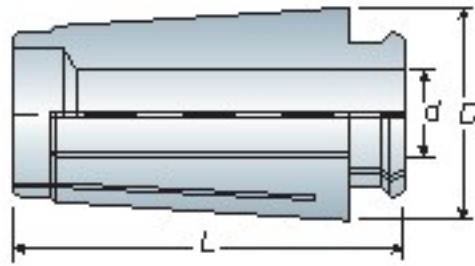


BT / NT
series

SK

High Speed Collet

精密筒夾



筒夾等級 Collet Grade	跳動精度 / Runout - Max μ 4 倍直徑前 - 4xD
A 級	$\leq 10\mu$
AA 級	$\leq 5\mu$

SK10 (approx. 0.02kgs/pc)

Model No.	d	Range	D	L
SK10-02	2	2~1.75	15.6	31
SK10-2 5	2.5	2.5~2.25		
SK10-03	3	3~2.75		
SK10-3 175	3.175	3.175~2.7		
SK10-3 5	3.5	3.5~3		
SK10-04	4	4~3.5		
SK10-4 5	4.5	4.5~4		
SK10-05	5	5~4.5		
SK10-5 5	5.5	5.5~5		
SK10-06	6	6~5.5		
SK10-6 5	6.5	6.5~6		
SK10-07	7	7~6.5	15.6	31
SK10-7 5	7.5	7.5~7		
SK10-08	8	8~7.5		
SK10-8 5	8.5	8.5~8		
SK10-09	9	9~8.5		
SK10-9 5	9.5	9.5~9		
SK10-10	10	10~9.5		

SK06 (approx. 0.005kgs/pc)

Model No.	d	Range	D	L
SK06-02	2	2~1.75	10.4	25
SK06-2 5	2.5	2.5~2.25		
SK06-03	3	3~2.75		
SK06-3 5	3.5	3.5~3		
SK06-04	4	4~3.5		
SK06-4 5	4.5	4.5~4		
SK06-05	5	5~4.5		
SK06-5 5	5.5	5.5~5		
SK06-06	6	6~5.5		

Unit: mm

Unit: mm

SK13 (approx. 0.04kgs/pc)

Model No.	d	Range	D	L
SK13-03	3	3~2.75	10.4	25
SK13-3 5	3.5	3.5~3		
SK13-04	4	4~3.5		
SK13-4 5	4.5	4.5~4		
SK13-05	5	5~4.5		
SK13-5 5	5.5	5.5~5		
SK13-06	6	6~5.5		
SK13-6 5	6.5	6.5~6		
SK13-07	7	7~6.5		
SK13-7 5	7.5	7.5~7		
SK13-08	8	8~7.5		
SK13-8 5	8.5	8.5~8		
SK13-09	9	9~8.5	10.4	25
SK13-9 5	9.5	9.5~9		
SK13-10	10	10~9.5		
SK13-10 5	10.5	10.5~10		
SK13-11	11	11~10.5		
SK13-11 5	11.5	11.5~11		
SK13-12	12	12~11.5		
SK13-12 5	12.5	12.5~12		
SK13-13	13	13~12.5		

Unit: mm

SK16 (approx. 0.08kgs/pc)

Model No.	d	Range	D	L
SK16-03	3	3~2.75	24.6	45
SK16-3 175	3.175	3.175~2.7		
SK16-3 5	3.5	3.5~3		
SK16-04	4	4~3.5		
SK16-4 5	4.5	4.5~4		
SK16-05	5	5~4.5		
SK16-5 5	5.5	5.5~5		
SK16-06	6	6~5.5		
SK16-6 5	6.5	6.5~6		
SK16-07	7	7~6.5		
SK16-7 5	7.5	7.5~7		
SK16-08	8	8~7.5	24.6	45
SK16-8 5	8.5	8.5~8		
SK16-09	9	9~8.5		
SK16-9 5	9.5	9.5~9		
SK16-10	10	10~9.5		
SK16-10 5	10.5	10.5~10		
SK16-11	11	11~10.5		
SK16-11 5	11.5	11.5~11		
SK16-12	12	12~11.5		
SK16-12 5	12.5	12.5~12		
SK16-13	13	13~12.5		
SK16-13 5	13.5	13.5~13		
SK16-14	14	14~13.5	24.6	45
SK16-14 5	14.5	14.5~14		
SK16-15	15	15~14.5		
SK16-15 5	15.5	15.5~15		
SK16-16	16	16~15.5		

Unit: mm

SK20 (approx. 0.14kgs/pc)

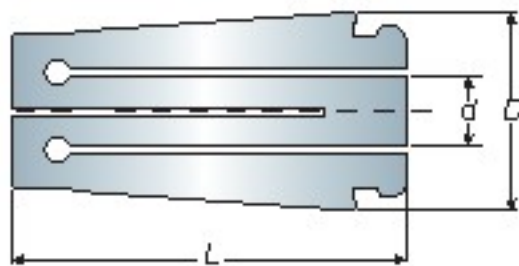
Model No.	d	Range	D	L
SK20-04	4	4~3.5	29.1	54.2
SK20-06	6	6~5.5		
SK20-08	8	8~7.5		
SK20-10	10	10~9.5		
SK20-12	12	12~11.5		
SK20-16	16	16~15.5		
SK20-20	20	20~19.5		

Unit: mm

SK25 (approx. 0.24kgs/pc)

Model No.	d	Range	D	L
SK25-06	6	6~5.5	35.7	57
SK25-08	8	8~7.5		
SK25-10	10	10~9.5		
SK25-12	12	12~11.5		
SK25-14	14	14~13.5		
SK25-16	16	16~15.5		
SK25-18	18	18~17.5		
SK25-20	20	20~19.5		
SK25-22	22	22~21.5		
SK25-24	24	24~23.5		
SK25-25	25	25~24.5		
SK25-25 4	25.4	25.4~25		

Unit: mm



Collet for End Mill

立銑專用筒夾

SK

BT / NT
series

SK10E (approx. 0.02kgs/pc)

Model No.	d	D	L
SK10E-03	3	15.6	31
SK10E-04	4		
SK10E-05	5		
SK10E-06	6		
SK10E-08	8		
SK10E-10	10		

Unit: mm

SK13E (approx. 0.04kgs/pc)

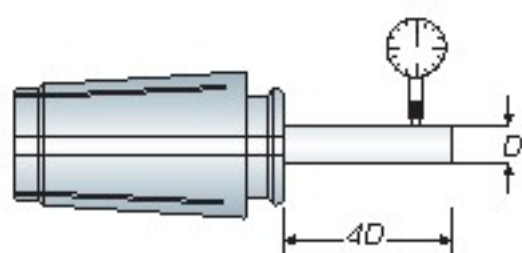
Model No.	d	D	L
SK13E-03	3	20	39
SK13E-04	4		
SK13E-05	5		
SK13E-06	6		
SK13E-08	8		
SK13E-10	10		

Unit: mm

SK16E (approx. 0.08kgs/pc)

Model No.	d	D	L
SK16E-03	3	24.6	45
SK16E-04	4		
SK16E-05	5		
SK16E-06	6		
SK16E-08	8		
SK16E-10	10		
SK16E-12	12		
SK16E-16	16		

Unit: mm



Collet Set

精密筒夾組

筒夾等級 Collet Grade	跳動精度 / Runout - Max μ 4 倍直徑前 - 4xD
A 級	≦ 10μ
AA 級	≦ 5μ

Model No.	Specification	Weight (kg)
SK10-8PCS	3,4,5,6,7,8,9,10	0.40
SK13-7PCS	3,4,5,6,8,10,12	0.80
SK16-7PCS	3,4,6,8,10,12,16	1.00
SK25-7PCS	6,8,10,12,16,20,25	2.10

Unit: mm

Model No.	D	Weight (kg)
WASK06	19.05	0.30
WASK10 (WAVC06)	27	0.50
WASK13	33	0.65
WASK16 (WAVC12)	40	0.80
WASK20	48	0.80
WASK25 (WASG20)	54	0.85

Unit: mm

Model No.	FIG.	D	Weight (kg)
WASK06C	1	19	0.08
WASK10C	1	25	0.12
WASK13C	2	33	0.18
WASK16C	2	40	0.20
WASK20C	2	48	0.22
WASK25C	2	54	0.25

Unit: mm

- When ordering, please specify the collet grade with A or AA.
For example:
SK10-06 AA or SK10E-04 AA,
SK10-8PCS AA or SK10E-6PCS AA

- The clamping range is 0.25mm if the inside diameter is less than 3mm.

- The clamping range is 0.5mm if the inside diameter is over than 3mm.

- SK COLLET SET FOR END MILL upon your request.

- 請於訂購時註明 A 級或 AA 級
例：SK10-06 AA or SK10E-04 AA / SK10-8PCS AA or SK10E-6PCS AA

- 筒夾的孔徑小於 3mm，其夾持範圍為 0.25mm；若大於 3mm 則為 0.5mm

- 如需 SK 立銑刀專用筒夾組，可另詢



Wrench

扳手



C-Type Wrench

C 型扳手



Fig 1



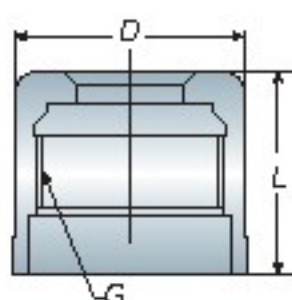
Fig 2

BT / NT
series

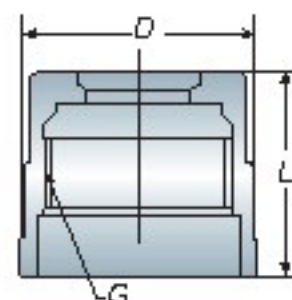
ASK

Nut

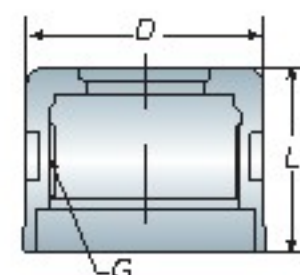
螺帽



普通螺帽
Standard Nut



C 型螺帽
C Type Nut
ASK06/10



C 型螺帽
C Type Nut
ASK13/16/20/25



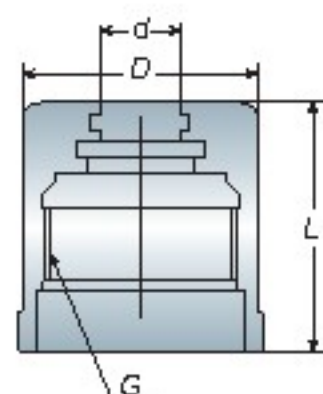
Through tools
刀尖出水



- Coolant Nut design with oil seal (O-ring). Each nut includes one O-ring.
- Complete coolant condition must to use with coolant tool.
- O-ring is consumable and it can be bought separately.
- 此款出水螺帽為 "O" 型密封螺帽，每一個螺帽含有一個 O 型環
- 必須搭配中心出水刀具才有完全出水效果
- O 型環為換耗品，可單獨購買

Coolant Nut

出水螺帽



Model No.	O-ring No.	d	D	L	Weight (kg)
ASK10-03CL	S-3	3	27	28.5	0.04
ASK10-04CL	S-4	4			
ASK10-05CL	S-5	5			
ASK10-06CL	S-6	6			
ASK10-07CL	S-7	7			
ASK10-08CL	S-8	8			
ASK10-09CL	S-9	9			
ASK10-10CL	S-10	10	40	37	0.12
ASK16-03CL	S-3	3			
ASK16-04CL	S-4	4			
ASK16-05CL	S-5	5			
ASK16-06CL	S-6	6			
ASK16-07CL	S-7	7			
ASK16-08CL	S-8	8			
ASK16-09CL	S-9	9			
ASK16-10CL	S-10	10			
ASK16-11CL	S-11	11			
ASK16-12CL	S-12	12			
ASK16-13CL	S-13	13			
ASK16-14CL	S-14	14			
ASK16-15CL	S-15	15			
ASK16-16CL	S-16	16			

Unit: mm