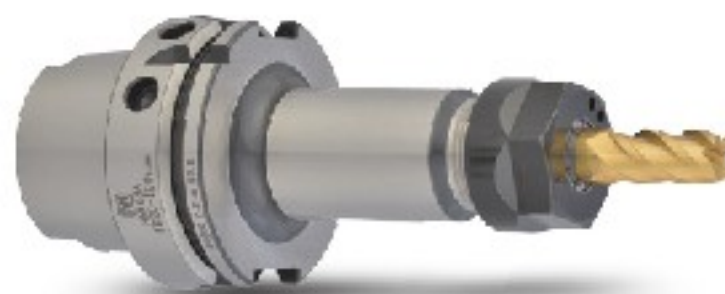
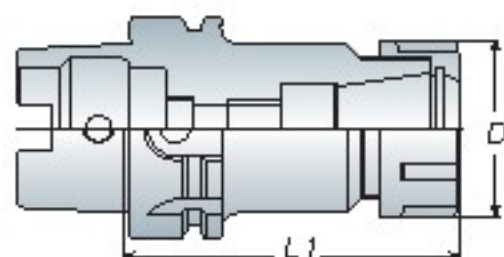


Spring Collet Chuck

彈性筒夾本體

ER

HSK-A
series



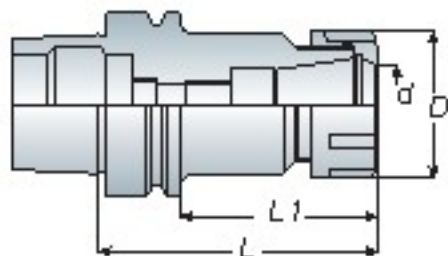
Features

- ER collet chuck with the flexibility that can clamp drill, reamers, end mills and taps.
- ER16 / ER20 holder can make M type as your choice.
- ER collet chuck is also suitable for ER bearing nut and wrench.
- Wrench must be ordered separately.
- ER 筒夾具有彈性，適合夾持鑽頭、鉸刀、銑刀及絲攻刀具
- ER16 / ER20 刀桿另有 M 型可供選擇
- ER 刀桿可另外選配鋼珠螺帽及扳手
- ER 扳手為另購品



Model No.	Clamping Range	D	L1	L	Collet Type	Wrench	Weight (kg)
HSK50A ER16-080	1~10	28	54	80	ER16	WER16	0.70
-100	1~10	28	74	100	ER16	WER16	0.90
ER20-080	1~13	34	54	80	ER20	WER20	0.70
-100	1~13	34	74	100	ER20	WER20	0.90
ER25-080	2~16	42	54	80	ER25	WER25	0.90
-100	2~16	42	74	100	ER25	WER25	1.10
ER32-100	2~20	50	74	100	ER32	WER32	1.20
HSK63A ER16-080	1~10	28	54	80	ER16	WER16	1.00
-100	1~10	28	74	100	ER16	WER16	1.10
-120	1~10	28	94	120	ER16	WER16	1.20
-150	1~10	28	124	150	ER16	WER16	1.40
ER20-080	1~13	34	54	80	ER20	WER20	1.00
-100	1~13	34	74	100	ER20	WER20	1.10
-120	1~13	34	94	120	ER20	WER20	1.30
-150	1~13	34	124	150	ER20	WER20	1.50
ER25-080	2~16	42	54	80	ER25	WER25	1.20
-100	2~16	42	74	100	ER25	WER25	1.40
-120	2~16	42	94	120	ER25	WER25	1.60
-150	2~16	42	124	150	ER25	WER25	2.00
ER32-080	2~20	50	54	80	ER32	WER32	1.30
-100	2~20	50	74	100	ER32	WER32	1.60
-150	2~20	50	124	150	ER32	WER32	2.40
ER40-080	3~26	63	54	80	ER40	WER40	1.40
-100	3~26	63	74	100	ER40	WER40	1.80
-150	3~26	63	124	150	ER40	WER40	2.90
HSK100A ER16-100	1~10	28	71	100	ER16	WER16	2.60
-160	1~10	28	131	160	ER16	WER16	3.00
ER20-100	1~13	34	71	100	ER20	WER20	2.70
-160	1~13	34	131	160	ER20	WER20	3.20
ER25-100	2~16	42	71	100	ER25	WER25	2.90
-160	2~16	42	131	160	ER25	WER25	3.50
ER32-100	2~20	50	71	100	ER32	WER32	3.00
-160	2~20	50	131	160	ER32	WER32	3.80
ER40-100	3~26	63	71	100	ER40	WER40	3.30
-160	3~26	63	131	160	ER40	WER40	4.20

Unit: mm



Collet Chuck

彈性筒夾本體

Model No.	Clamping Range (d)	D	L	L1	Collet Type	Wrench	Weight (kg)	
HSK40E	ER16-080	1~10	28	80	60	ER16	WER16	0.50
	ER20-080	1~13	34	80	60	ER20	WER20	0.60
	ER25-080	2~16	42	80	60	ER25	WER25	0.80
HSK50E	ER16-100	1~10	28	100	74	ER16	WER16	0.80
	ER20-100	1~13	34	100	74	ER20	WER20	0.90
	ER25-100	2~16	42	100	74	ER25	WER25	1.10
	ER32-100	2~20	50	100	74	ER32	WER32	1.30

Unit: mm

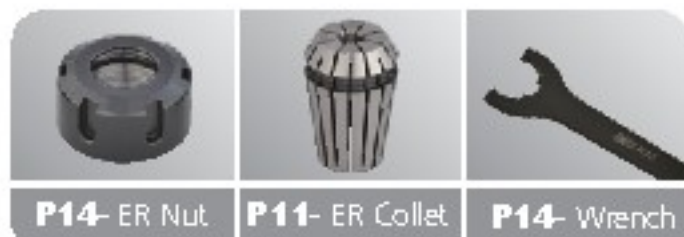
ER

HSK-E

series



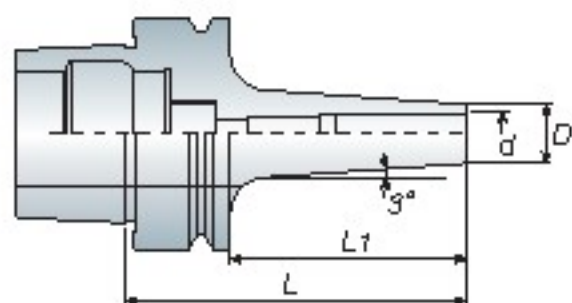
- ER collet chuck with the flexibility that can clamp drill, reamers, end mills and taps.
- ER collet chuck is also suitable for ER bearing nut and wrench.
- Wrench must be ordered separately.
- Max speed: 40,000 r.p.m G2.5
- ER 筒夾具有彈性，適合夾持鑽頭、鉸刀、銑刀及絲攻刀具
- ER 刀桿可另外選配 ER 鋼珠螺帽及扳手
- ER 扳手為另購品
- 最高轉速可達 40,000 r.p.m G2.5



P14- ER Nut

P11- ER Collet

P14- Wrench



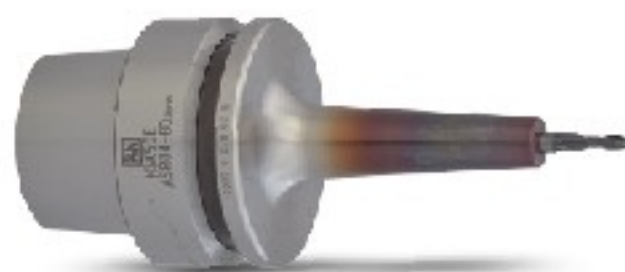
Shrink Chuck

燒結式刀桿

Model No.	d	D	L	L1	Weight (kg)	
HSK40E	ASR04-080	4	14	80	60	0.40
	ASR06-080	6	21	80	60	0.40
	ASR08-080	8	21	80	60	0.50
	ASR10-080	10	24	80	60	0.50
	ASR12-080	12	24	80	60	0.50
HSK50E	ASR04-080	4	14	80	54	0.60
	ASR06-080	6	21	80	54	0.60
	ASR08-080	8	21	80	54	0.70
	ASR10-080	10	24	80	54	0.70
	ASR12-080	12	24	80	54	0.70

Unit: mm

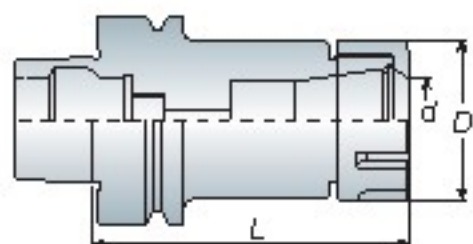
ASR



- Heater specification => refer to P.24
- Tools are restricted by material of h6 carbide tool.
- Max speed: 40,000 r.p.m G2.5
- 刀桿加熱器規格請參考 P.24
- 刀具限用 h6 鎢鋼刀具
- 最高轉速可達 40,000 r.p.m G2.5

Spring Collet Chuck

彈性筒夾本體



ER

HSK-F
series



Model No.	Clamping Range (d)	D	L	Collet Type	Wrench	Weight (kg)
HSK63F ER16-080	1~10	28	80	ER16	WER16	0.90
-100	1~10	28	100	ER16	WER16	1.10
ER20-080	1~13	34	80	ER20	WER20	1.00
-100	1~13	34	100	ER20	WER20	1.30
ER25-080	2~16	42	80	ER25	WER25	1.10
-100	2~16	42	100	ER25	WER25	1.30
ER32-080	2~20	50	80	ER32	WER32	1.20
-100	2~20	50	100	ER32	WER32	1.40
ER40-080	3~26	63	80	ER40	WER40	1.40
-100	3~26	63	100	ER40	WER40	1.60

Unit: mm

- ER collet chuck with the flexibility that can clamp drill, reamers, end mills and taps.
- ER collet chuck is also suitable for ER bearing nut and wrench.
- Wrench must be ordered separately.
- Max speed: 40,000 r.p.m G2.5
- ER 筒夾具有彈性，適合夾持鑽頭、鉸刀、銼刀及絲攻刀具
- ER 刀桿可另外選配 ER 鋼珠螺帽及扳手
- ER 扳手為另購品
- 最高轉速可達 40,000 r.p.m G2.5



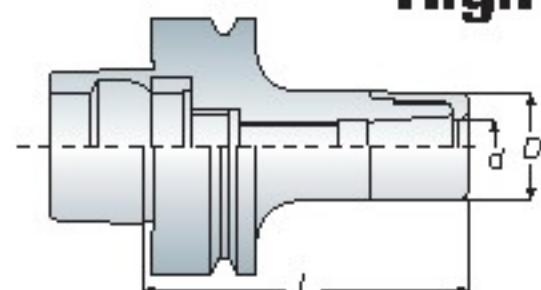
P14- ER Nut

P11- ER Collet

P14- Wrench

High Speed Collet Chuck

高轉速精密筒夾本體



ASK



Model No.	Clamping Range (d)	D	L	Wrench	Weight (kg)
HSK63F ASK10-080	2~10	27	80	WASK10	1.00
ASK16-080	3~16	40	80	WASK16	1.10
ASK25-090	6~25.4	54	90	WASK25	1.50

Unit: mm

- ASK tooling systems are suitable for high speed and high precision cutting.
- Special nut design provides better cutting condition and reducing cutting vibration.
- ASK collet can be achieve the best cutting condition when using AA grade.
- Wrench must be ordered separately.
- Max speed: 40,000 r.p.m G2.5
- ASK 系列適用於高轉速、高精密切削加工，切削效果佳
- 螺帽獨特設計可降低高轉速切削時的風阻及噪音並提升工作效能
- 欲達到切削效果佳，可搭配使用 AA 級筒夾
- ASK 扳手為另購品
- 最高轉速可達 40,000 r.p.m G2.5



P17- SK Collet

P18- Wrench

P19- ASK Nut