

## End Mill Holder

側固端銑刀桿

SLA

HSK-A  
series



- For straight shank end mill.
- End mill is held by two set screws.
- End mill holder comes equipped with set screws.
- Max speed: 30,000 r.p.m G2.5
- 適用於夾持直柄銑刀，可用在一般銑削加工
- 夾持銑刀之固定螺絲共 2 個
- 刀桿本身已裝配 2 個固定螺絲
- 最高轉速可達 30,000 r.p.m G2.5

Model No.	d	D	L	L1	L2	G	Weight (kg)
HSK50A SLA06-080	6	25	80	12	10	M06x1.0P	0.80
SLA08-080	8	28	80	14	12	M08x1.25P	0.80
SLA10-080	10	35	80	15	14	M10x1.5P	0.90
SLA12-080	12	40	80	20	16	M10x1.5P	1.00
SLA16-090	16	45	90	22	18	M10x1.5P	1.10
SLA20-090	20	50	90	25	20	M12x1.75P	1.20
HSK63A SLA06-080	6	25	80	12	10	M06x1.0P	1.00
SLA08-080	8	28	80	14	12	M08x1.25P	1.10
SLA10-080	10	35	80	15	14	M10x1.5P	1.20
SLA12-080	12	40	80	20	16	M10x1.5P	1.30
SLA16-100	16	45	100	22	18	M10x1.5P	1.70
SLA20-100	20	50	100	25	20	M12x1.75P	1.90
SLA25-110	25	55	110	25	22	M12x1.75P	2.00
SLA32-110	32	60	110	30	22	M16x2.0P	2.80

Unit: mm

## End Mill Holder - Weldon

側固端銑刀桿 (歐規)

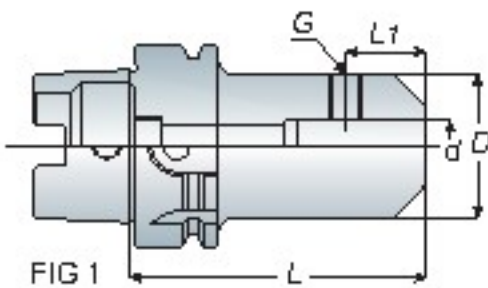


FIG 1

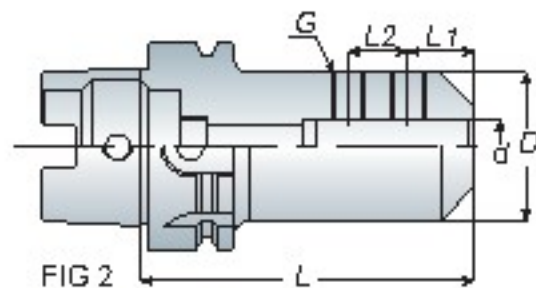
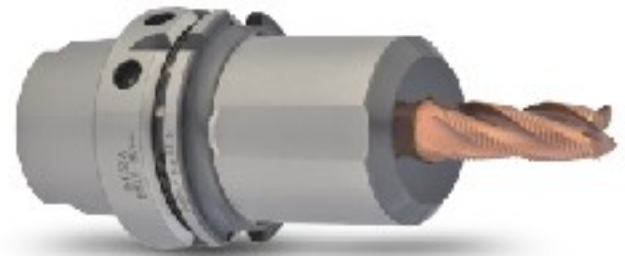


FIG 2

EM



- For straight shank end mill.
- End mill is held by one (FIG. 1) or two (FIG. 2) set screws.
- End mill holder comes equipped with set screws.
- Max speed: 30,000 r.p.m G2.5
- 適用於夾持直柄銑刀，可用在一般銑削加工
- 夾持銑刀之固定螺絲分為一個 (FIG. 1) 或兩個 (FIG. 2)
- 刀桿本身已裝配固定螺絲
- 最高轉速可達 30,000 r.p.m G2.5

Model No.	FIG.	d	D	L	L1	L2	G	Weight (kg)
HSK50A EM06-065	1	6	25	65	18	-	M06x1.0P	0.60
EM08-065	1	8	28	65	18	-	M08x1.25P	0.70
EM10-065	1	10	35	65	20	-	M10x1.5P	0.80
EM12-080	1	12	42	80	22.5	-	M10x1.5P	1.00
EM16-080	1	16	48	80	24	-	M10x1.5P	1.10
EM20-080	1	20	52	80	25	-	M12x1.75P	1.20
HSK63A EM06-065	1	6	25	65	18	-	M06x1.0P	0.90
EM08-065	1	8	28	65	18	-	M08x1.25P	0.90
EM10-065	1	10	35	65	20	-	M10x1.5P	1.00
EM12-065	1	12	42	80	22.5	-	M10x1.5P	1.10
EM16-080	1	16	48	80	24	-	M10x1.5P	1.40
EM20-080	1	20	52	80	25	-	M12x1.75P	1.50
EM25-110	2	25	65	110	24	49	M12x1.75P	2.50
EM32-110	2	32	72	110	24	52	M16x2.0P	2.70

Unit: mm

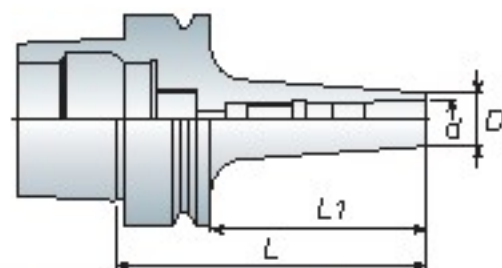
# HSK-E series

## AVC



## High Speed Collet Chuck

高轉速高精度立銑刀本體



- AVC long type collet with angle 8° increases clamping force and cutting rigidity and precision.
- Special nut design provides better cutting conditions and reducing cutting vibrations.
- Wrench must be ordered separately.
- Max Speed: 40,000 r.p.m G2.5
- 8° 長筒夾設計提升高夾持力，高剛性及高精度
- 刀桿柄壁的增厚設計大幅提升切削剛性
- 螺帽獨特設計可降低高轉速切削時的風阻及噪音並提升工作效能
- AVC 扳手為另購品
- 最高轉速可達 40,000 r.p.m G2.5

Model No.	Clamping Range (d)	D	L	L1	Weight (kg)
HSK40E AVC06-070	2~6	27	70	50	0.50
-090	2~6	27	90	70	0.70
AVC10-090	3~10	33	90	70	0.80
AVC12-090	3~12	40	90	70	0.80
HSK50E AVC06-070	2~6	27	70	44	0.70
-090	2~6	27	90	64	0.80
AVC10-090	3~10	33	90	64	1.00
AVC12-090	3~12	40	90	64	1.00

Unit: mm



P21- AVC Collet

P21- AVC Nut

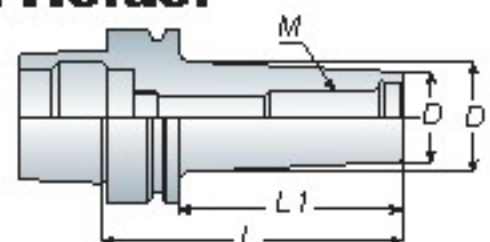
P21- Wrench



## AMD

## Screw-in Endmill Holder

圓刃銑刀桿



- Max Speed: 40,000 r.p.m G2.5
- 最高轉速可達 40,000 r.p.m G2.5

Model No.	M	D	D1	L	L1	Weight (kg)
HSK40E AMD123-060	6	11	17	60	33	0.40
AMD122-060	6	11	19	60	35	0.40
AMD202-060	10	18	23	60	33	0.50
HSK50E AMD123-060	6	11	17	60	25	0.70
AMD122-060	6	11	17	60	25	0.70
AMD202-060	10	18	22	60	24	0.85

Unit: mm



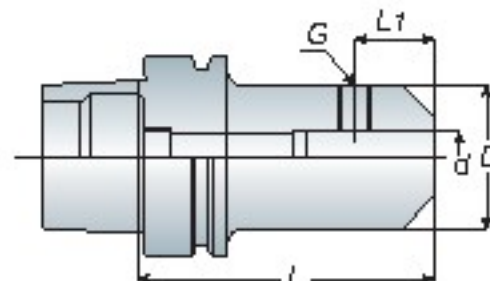
P31-End Mills



## SLA

## End Mill Holder (For 3D Taster)

側固端銑刀桿



- Max Speed: 40,000 r.p.m G2.5
- 最高轉速可達 40,000 r.p.m G2.5

Model No.	d	D	L	L1	G	Weight (kg)
HSK40E SLA20-070	20	40	70	25	M8x1.25P	0.70
HSK50E SLA20-075	20	50	75	25	M8x1.25P	1.10

Unit: mm