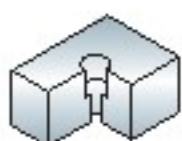
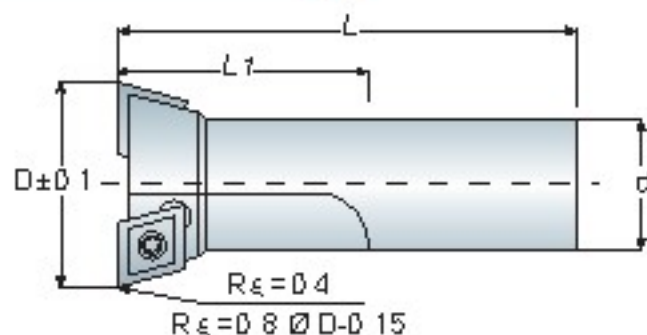


**BT / NT**  
series

**TB**

# Fixed Rough Boring Bar

固定式粗搪刀桿



Boring/孔加工



TB	Model No.	L	Model No.	L	Model No.	L	Dimension			Teeth	Insert
							D R $\epsilon$ =0.4	d	L1		
12	TB12-S16-120	120	TB12-S16-160	160	TB12-S16-200	200	11.8	16	30	1	CC..060204
13	TB13-S16-120		TB13-S16-160		TB13-S16-200		12.8				
14	TB14-S16-120		TB14-S16-160		TB14-S16-200		13.8				
15	TB15-S16-120		TB15-S16-160		TB15-S16-200		14.8				
16	TB16-S16-120	120	TB16-S16-160	160	TB16-S16-200	200	15.8	16	30	2	
17	TB17-S16-120		TB17-S16-160		TB17-S16-200		16.8				
18	TB18-S16-120		TB18-S16-160		TB18-S16-200		17.8				
19	TB19-S16-120		TB19-S16-160		TB19-S16-200		18.8				
20	TB20-S16-120		TB20-S16-160		TB20-S16-200		19.8				
21	TB21-S16-120		TB21-S16-160		TB21-S16-200		20.8				
22	TB22-S16-120	TB22-S16-160	TB22-S16-200	21.8							
23	TB23-S20-130	130	TB23-S20-160	160	TB23-S20-200	200	22.8	20	30	2	
24	TB24-S20-130		TB24-S20-160		TB24-S20-200		23.8				
25	TB25-S20-130		TB25-S20-160		TB25-S20-200		24.8				
26	TB26-S20-130	130	TB26-S20-160	160	TB26-S20-200	200	25.8	20	30	2	
27	TB27-S20-130		TB27-S20-160		TB27-S20-200		26.8				
28	TB28-S20-130		TB28-S20-160		TB28-S20-200		27.8				
29	TB29-S20-130		TB29-S20-160		TB29-S20-200		28.8				
30	TB30-S25-160	160	TB30-S25-200	200	TB30-S25-250	250	29.8	25	40	2	
31	TB31-S25-160		TB31-S25-200		TB31-S25-250		30.8				
32	TB32-S25-160		TB32-S25-200		TB32-S25-250		31.8				
33	TB33-S25-160		TB33-S25-200		TB33-S25-250		32.8				
34	TB34-S25-160		TB34-S25-200		TB34-S25-250		33.8				
35	TB35-S25-160		TB35-S25-200		TB35-S25-250		34.8				
36	TB36-S25-160		TB36-S25-200		TB36-S25-250		35.8				
37	TB37-S25-160		TB37-S25-200		TB37-S25-250		36.8				
38	TB38-S25-160		TB38-S25-200		TB38-S25-250		37.8				
39	TB39-S25-160		TB39-S25-200		TB39-S25-250		38.8				
40	TB40-S25-160	TB40-S25-200	TB40-S25-250	39.8							
41	TB41-S32-200	200	TB41-S32-250	250	TB41-S32-300	300	40.8	32	45	2	
42	TB42-S32-200		TB42-S32-250		TB42-S32-300		41.8				
43	TB43-S32-200		TB43-S32-250		TB43-S32-300		42.8				
44	TB44-S32-200		TB44-S32-250		TB44-S32-300		43.8				
45	TB45-S32-200		TB45-S32-250		TB45-S32-300		44.8				
46	TB46-S32-200		TB46-S32-250		TB46-S32-300		45.8				
47	TB47-S32-200		TB47-S32-250		TB47-S32-300		46.8				
48	TB48-S32-200		TB48-S32-250		TB48-S32-300		47.8				
49	TB49-S32-200		TB49-S32-250		TB49-S32-300		48.8				
50	TB50-S32-200		TB50-S32-250		TB50-S32-300		49.8				
51	TB51-S32-200	200	TB51-S32-250	250	TB51-S32-300	300	50.8	32	45	2	
52	TB52-S32-200		TB52-S32-250		TB52-S32-300		51.8				
53	TB53-S32-200		TB53-S32-250		TB53-S32-300		52.8				
54	TB54-S32-200		TB54-S32-250		TB54-S32-300		53.8				
55	TB55-S32-200		TB55-S32-250		TB55-S32-300		54.8				
56	TB56-S32-200		TB56-S32-250		TB56-S32-300		55.8				
57	TB57-S32-200		TB57-S32-250		TB57-S32-300		56.8				

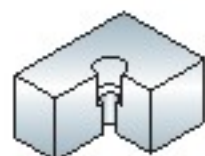
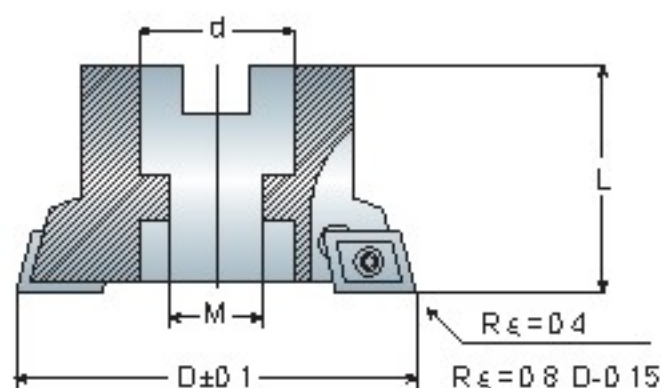
Unit: mm

# Fixed Rough Boring Bar

固定式粗搪刀桿

**TB**

**BT / NT**  
series



Boring/孔加工



## Features

- For working material, the inserts divide the most common used 3 types: 1. IRON: KC850, 2. CAST IRON: KC5010, 3. ALUM: KC313
- When ordering, please specify the material code.  
For example: CCMT120404 KC850
- 依加工材質，刀片可區分為三種：  
1. 鐵：KC850，2. 鑄鐵：KC5010，  
3. 鋁：KC313
- 訂購時，請註明材質編號  
例：CCMT120404 KC850

TB	Model No. (d=22.0)	Model No. (d=25.4)	Insert 	Model No. (d=22.0 / 25.4)	Insert 	D Rε = 0.4	Teeth
45	T845-22.0-CC09					44.8	2
46	T846-22.0-CC09					45.8	
47	T847-22.0-CC09		CC..09T304		CC..120404	46.8	
48	T848-22.0-CC09					47.8	
50	T850-22.0-CC09	T850-25.4-CC09				49.8	
51	T851-22.0-CC09	T851-25.4-CC09				50.8	2
52	T852-22.0-CC09	T852-25.4-CC09				51.8	
55	T855-22.0-CC09	T855-25.4-CC09	CC..09T304	T855-22.0-CC12 T857-22.0-CC12	CC..120404	54.8	
57	T857-22.0-CC09	T857-25.4-CC09		T859-22.0-CC12		56.8	
59	T859-22.0-CC09	T859-25.4-CC09				58.8	
60	T860-22.0-CC09	T860-25.4-CC09		T860-22.0-CC12		59.8	2
62	T862-22.0-CC09	T862-25.4-CC09		T862-25.4-CC12		61.8	
63	T863-22.0-CC09	T863-25.4-CC09	CC..09T304	T863-25.4-CC12	CC..120404	62.8	
65	T865-22.0-CC09	T865-25.4-CC09		T865-25.4-CC12		64.8	
66	T866-22.0-CC09	T866-25.4-CC09		T866-25.4-CC12		65.8	
68	T868-22.0-CC09	T868-25.4-CC09		T868-25.4-CC12		67.8	2
69	T869-22.0-CC09	T869-25.4-CC09		T869-25.4-CC12		68.8	
70	T870-22.0-CC09	T870-25.4-CC09	CC..09T304	T870-25.4-CC12	CC..120404	69.8	
72	T872-22.0-CC09	T872-25.4-CC09		T872-25.4-CC12		71.8	
74		T874-25.4-CC09		T874-25.4-CC12		73.8	
75	T875-22.0-CC09	T875-25.4-CC09		T875-25.4-CC12		74.8	2
76		T876-25.4-CC09		T876-25.4-CC12		75.8	
78		T878-25.4-CC09	CC..09T304	T878-25.4-CC12	CC..120404	77.8	
80		T880-25.4-CC09		T880-25.4-CC12		79.8	
82		T882-25.4-CC09		T882-25.4-CC12		81.8	
84		T884-25.4-CC09		T884-25.4-CC12		83.8	2
85		T885-25.4-CC09		T885-25.4-CC12		84.8	
88		T888-25.4-CC09	CC..09T304	T888-25.4-CC12	CC..120404	87.8	
90		T890-25.4-CC09		T890-25.4-CC12		89.8	
95		T895-25.4-CC09		T895-25.4-CC12		94.8	

Insert 	Screw 	Wrench 
CCMT060204	MS2506A	T9
CCMT09T304	MS4011A	T15
CCMT120404	MS5011A	T20

Dimension	d	M	L
TB...-22.0-...	22.0	11	50
TB...-25.4-...	25.4	13	50

Unit: mm