

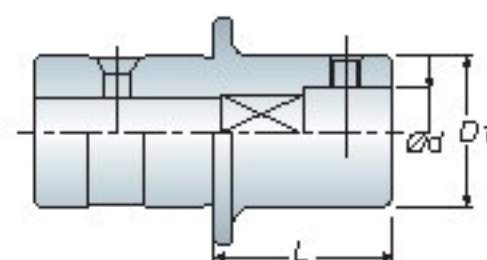
BT / NT
series

TPG



TPG875 Tap Collet

TPG875 絲攻筒夾



Model No.	Tap Diameter (D)	D1	L	Weight (kg)
TPG875-D	M32~M50	∅d+16mm	50	1.30
	PT1~PT1-1/2	∅d+16mm	50	1.30
	M52~M75	∅d+16mm	70	1.80
	PT1-1/4~PT2-1/2	∅d+16mm	70	1.80

Unit: mm

- Tap diameter which is not shown above, please advice shank diameter (∅d) and square size (SQ/□) when ordering.
- 請於訂購時，確認絲攻筒夾之柄徑 (∅d) 和四角孔 (SQ/□)

TPG875 Tap Collet Specification

TPG875 絲攻筒夾規格表

JIS	∅d	□	ISO	∅d	□	DIN376	∅d	□
TPG875 M32 W1-1/4 PT7/8	24	19	TPG875 M33	22.4	18	TPG875 M33	25	20
TPG875 M33	25	19	TPG875 M36	25	20	TPG875 M36	28	22
TPG875 M34 M35 W1-3/8 PT1	26	21	TPG875 M39 M42	28	22.4	TPG875 M39 M42	32	24
TPG875 M36 PT1-1/8	28	21	TPG875 M45 M48	31.5	25	TPG875 M45 M48	36	29
TPG875 M39 M40 W1-1/2	30	23	TPG875 M52	35.5	28	TPG875 M52	40	32
TPG875 M42 W1-5/8	32	26						
TPG875 M45 M46 W1-3/4 PT1-3/8	35	26						
TPG875 M48 W1-7/8 PT1-1/2	38	29						
TPG875 M50 W2	40	32						
TPG875 M52 PT1-3/4	42	32						
TPG875 M56	44	35						
TPG875 M60 PT2	46	35						
TPG875 M64 W2-1/2	48	38						
TPG875 M65	50	38						
TPG875 M68	52	41						
TPG875 M70 M72	55	41						
TPG875 M75	58	46						

Unit: mm

Unit: mm

Unit: mm



TPG875-TA830 Adapter

TPG875-TA830 轉換器

- The adapter suits to switch TPG875 tap holder to clamp TPC830 tap collet.
- 此轉換器為裝配於 TPG875 本體上做轉換，使其可夾持 TPC830 絲攻筒夾

Vertical Air Tapping Machine

氣動攻牙機

Model No.	AT-12 / Π
For Tap / 攻牙能力	M3~M12
Speed (r p m) / 主軸轉速	400
Work Range / 工作範圍	Min. 200mm ~ Max. 1900mm
Weight (kg) / 重量	20kg

Standard Accessories:

- Air tapping spindle
- Parallel arm
- Table mounting column
- Air unit
- Including 6pcs of ATC312 tap collet (FIG.1).
- Radial jib, increases arm reach by 500mm

標準配備：

- 氣動攻牙機主軸
- 伸長臂
- 固定座
- 三點組合
- 內含 6 個扭力絲攻筒夾
- 搖臂，可增強臂力至 500mm



- ATC312 tap collet (FIG.1) could be chosen according to your request. (refer to P.45)
- 扭力絲攻筒夾尺寸可任選 (請參考 P.45)