

FIG 1

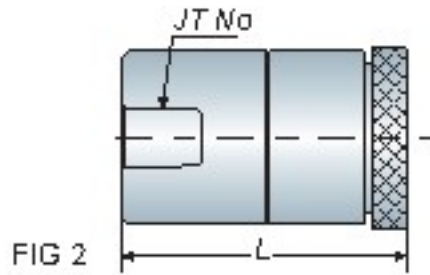


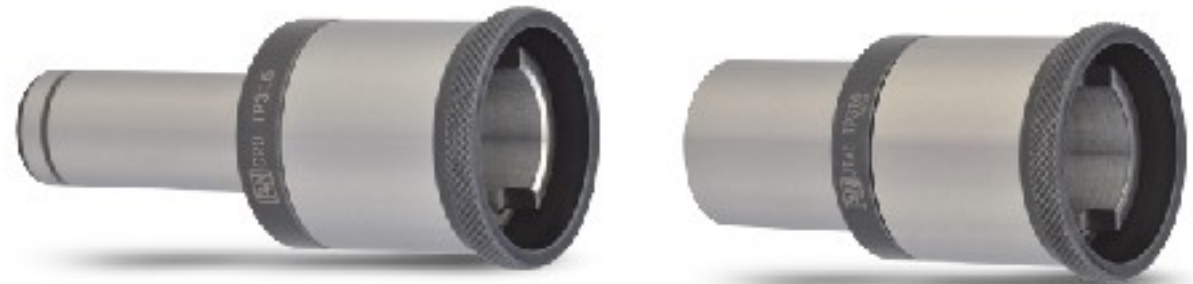
FIG 2

Tap Holder

簡式攻牙本體

TP

BT / NT
series



| Model No. | FIG. | L | Tapping Range | Collet Type | Weight (kg) |
|------------|------|----|---------------|-------------|-------------|
| C20 TP 316 | 1 | 50 | M3~M16 | TPC316 | 0.40 |
| JT2 TP 316 | 2 | 75 | M3~M16 | TPC316 | 0.50 |
| JT6 TP 316 | 2 | 75 | M3~M16 | TPC316 | 0.40 |

Unit: mm

- TP tap holder can be used to connect with end mill holder, milling chuck holder and JTA drill chuck holder.
- It is the simple tap holder without floating and also use TPC316 tap collet.
- 簡式攻牙本體可用於連結側固刀桿、強力銑刀夾頭刀桿和 JTA 夾頭刀桿做使用
- 簡式攻牙本體不具伸縮功能，僅可搭配 TPC316 筒夾做使用

Tension & Compression Tap Holder

伸縮攻牙本體

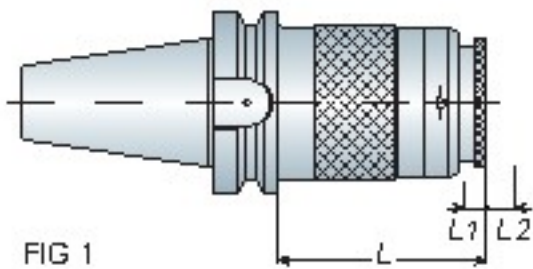


FIG 1

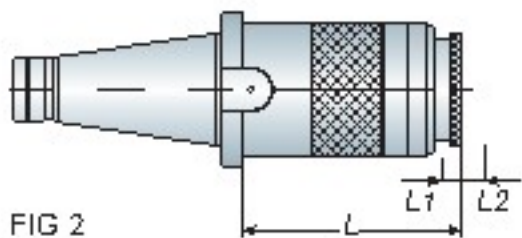


FIG 2

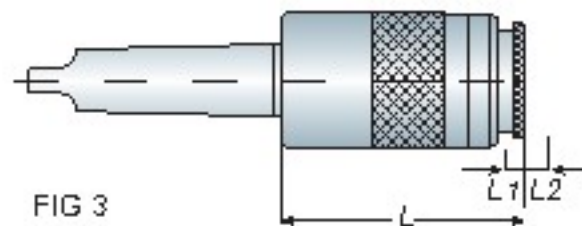


FIG 3

TPG



| Model No. | FIG. | L | L1 | L2 | Tapping Range | Collet Type | Weight (kg) |
|-------------|------|-----|----|----|---------------|-------------|-------------|
| BT50 TPG875 | 1 | 115 | 15 | 80 | M8~M30 | TPC830 | 7.30 |
| | | | 15 | 80 | M32~M75 | TPG875 | |
| NT50 TPG875 | 2 | 140 | 10 | 80 | M8~M30 | TPC830 | 7.30 |
| | | | 10 | 80 | M32~M75 | TPG875 | |
| MTA5 TPG875 | 3 | 161 | 15 | 80 | M8~M30 | TPC830 | 6.50 |
| | | | 15 | 80 | M32~M75 | TPG875 | |

Unit: mm

- The tapping range of TPG holder is from M8~M75. M8~M30 must be used with TPG875-TA830 adapter to switch TPC830 tap collet.
- Tapping range: M08~M30 - use with TPG875-TA830 adapter + TPC830 tap collet.
- Tapping range: M32~M75 - use with TPG875 tap collet.
- TPG875 伸縮攻牙本體，攻牙範圍為 M8~M75；M8~M30 需先連接 TPG875-TA830 轉接器作轉換並搭配 TPC830 絲攻筒夾使用
- 攻牙範圍 M08~M30: 使用 TPG875-TA830 轉接器 + TPC830 絲攻筒夾
- 攻牙範圍 M32~M75: 使用 TPG875 絲攻筒夾



P40-TPC830 Collet

P43-TPG875 Collet