

HSK
series

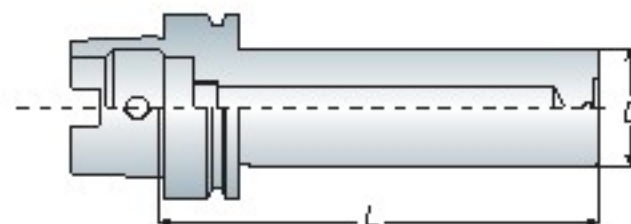
TA



- Test arbor is used to measure the runout of machine spindle.
- Taper Contact > 85%
- 測試棒為測量機台主軸精準度用
- 錐度密合度 > 85%

Test Bar

測試棒



Model No.	D	L	Roundness 真圓度	Concentricity 同心度	Weight (kg)
HSK32A+E TA25-200	25	200	< 0.003	< 0.005	1.20
HSK40A+E TA30-200	30	200			1.80
HSK50A+E TA30-250	30	250			2.20
HSK63A+E TA40-300	40	300			2.90
HSK100A+E TA50-300	50	300			7.00

Unit: mm



FIG 1

FIG 2

- FIG.1: Vertical and horizontal type
- FIG.2: Bearing type

Locking Device

鎖刀座

Model No.	FIG.	Holder Type 刀桿型式	Weight (kg)
LD-HSK32-FIG 1	1	HSK32E	5.50
LD-HSK40-FIG 1		HSK40A+C+E	5.90
LD-HSK50-FIG 1		HSK50A+C+E	6.30
LD-HSK63-FIG 1		HSK63A+C+E+F	6.70
LD-HSK100-FIG 1		HSK100A+C+E	7.90
LD-HSK40-FIG 2	2	HSK40A+C+E	3.10
LD-HSK50-FIG 2		HSK50A+C+E	3.40
LD-HSK63-FIG 2		HSK63A+C+E+F	4.00

Unit: mm

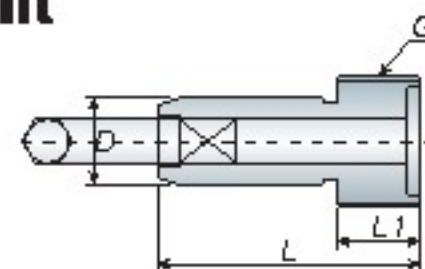
HSK



- Wrench must be ordered separately.
- 扳手為另購品

Coolant Supply Unit

專用冷卻液管



Model No.	D	L	L1	G	Wrench (○)	Weight (kg)
HSK63A-M18	12	36	11.4	M18x1.0P	W6	0.05
HSK100A-M24	16	44	15.5	M24x1.5P	W8	0.06

Unit: mm