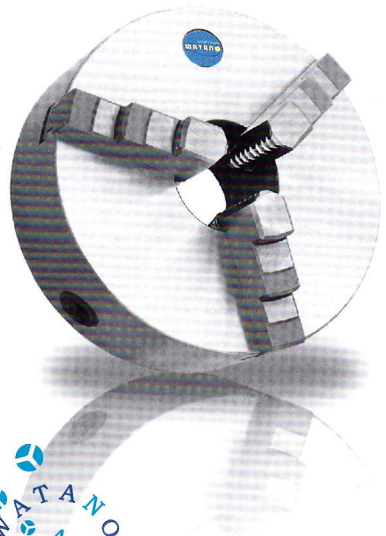


K11 SERIES THREE-JAW SELF-CENTERING CHUCKS

K11 系列三爪自定心卡盘

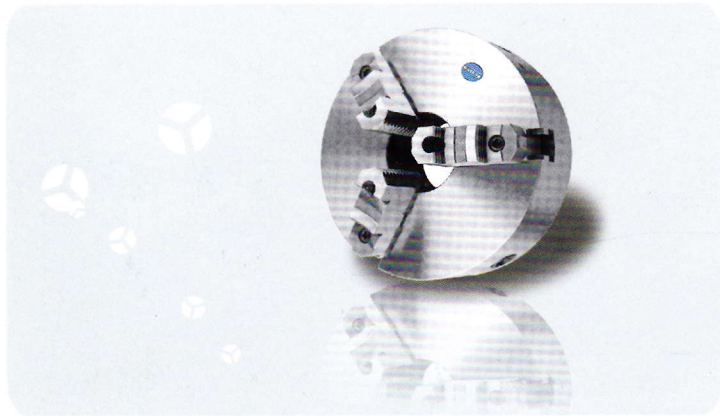


K11 型卡盘配带正爪和反爪各一副，可分别使用。

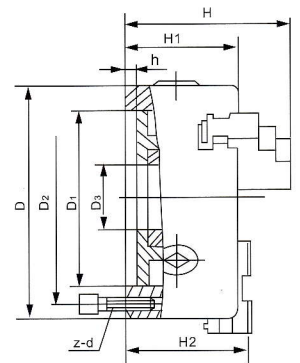
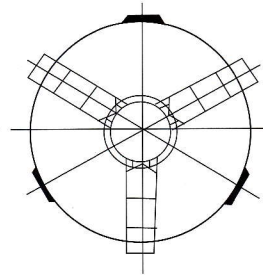
K11A、K11C型卡盘，卡爪由两部分组成，采用螺钉连接，可调整为正爪或反爪使用，K11A型配带符合ISO3442标准的分离爪，K11C型配带传统结构的分离式。并可根据用户的要求提供软卡爪，经配车（或磨）后可获得理想夹持精度。

Model K11 chucks are provided with a set of internal jaws and a set of external ones which can be separately.

The jaws of K11A and K11C chucks are composed of two screw-connected parts. They can perform either as internal or external jaws through adjustment. Model K11A chucks are supplied in two-piece jaws as per ISO3442. Model K11C chucks are supplied with traditional two-piece jaws. Upon users' requests, the soft blank top jaws are offered to achieve ideal clamping accuracy after being remachined.



尺寸图 Dimensions



单位/UNIT: mm

SPECIFICATIONS 规格表

规格 Size	D	D1	D2	D3	H	H1	H2	h	z-d	最大输入扭矩NM Max. input torque	极限转速R.P.M Max. speed	净重Kg Net wt.
80		55	66	16	66.5	50	—	4	3-M6	40	4000	1.9
100		72	84	22	74.5	55	—	3	3-M8	60	3500	3.2
125		95	108	30	84.5	58	—	4	3-M8	100	3000	5
130		100	115	30	86.5	60	—	5	3-M8	100	3000	5.6
160		130	142	45	94	65	—	5	3-M8	160	2500	8.8
165		130	145	45	94	65	—	5	3-M8	160	2500	9.5
190		155	172	55	105	75	—	5	3-M10	250	2000	13.8
200		165	180	65	109	75	—	5	3-M10	250	2000	15.5
230		190	210	70	120	80	—	6	3-M12	250	2000	15.5
240		195	215	70	120	80	—	8	3-M12	320	1600	24
250		206	226	80	120	80	—	5	3-M12	320	1600	25.7
315		260	285	100	147.5	90	—	6	3-M16	400	1200	47
315A		260	285	100	156.5	90	99.5	6	3-M16	400	1200	41
320		270	290	100	147.5	90	—	6	3-M16	400	1200	—
320A		270	290	100	156.5	90	101.5	6	3-M16	400	1200	42
320C		270	290	100	156.5	90	101.5	6	3-M16	400	1200	49
325		272	296	100	147.5	90	—	6	3-M16	400	1200	44
325A/C		272	296	100	156.5	90	99.5	6	3-M16	400	1200	46
380		325	350	135	155.7	98	—	6	3-M16	500	1000	65
380C		325	350	135	156.5	98	104.5	6	3-M16	500	1000	60
380A		325	350	135	171.5	98	107.5	6	3-M16	500	1000	62
400A		340	368	130	173.5	100	112.5	6	3-M16	500	1000	71
500A		440	465	210	202	115	126	6	6-M16	630	800	119
630A		545	586	252	220.5	135	144.5	7	6-M16	800	800	—