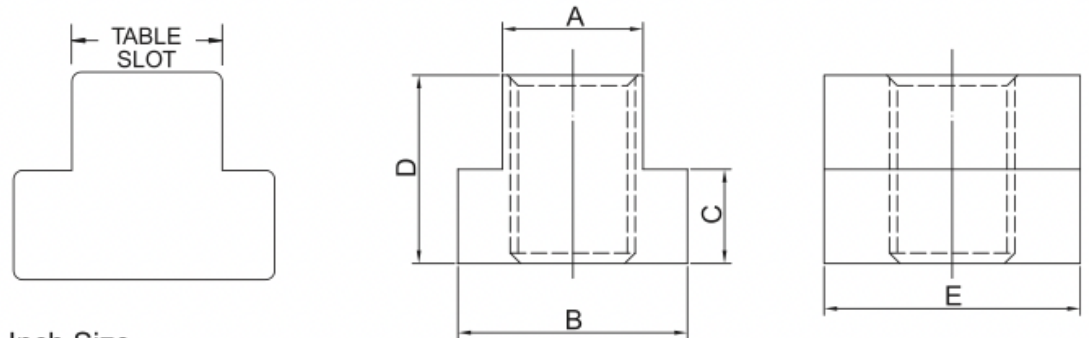




Individually Parts T-Slot Nut

HRC 34°



Inch Size

ORDER NO.	Table Slot	Thread Size	A	B	C	Length	WEIGHT (kg)	CODE NO.
3412I	3/8	5/16	11/32	5/8	1/2	7/8	0.023	1003-179
3413I	7/16	3/8-16	11/16	7/32	1/2	7/8	0.023	1003-180
3423I	1/2		7/8	9/32	1/2	7/8	0.032	1003-181
3433I	9/16	1/2-12 1/2-13	7/8	11/32	5/8	1-1/8	0.048	1003-182
3414I	9/16		7/8	11/32	5/8	1-1/8	0.048	1003-183
3424I	5/8	5/8-11	1	11/32	5/8	1-1/8	0.06	1003-184
3434I	11/16		1-1/8	7/16	3/4	1-1/4	0.087	1003-185
3415I	11/16	3/4-10	1-1/8	7/16	3/4	1-1/4	0.087	1003-186
3425I	3/4		1-1/4	15/32	3/4	1-1/4	0.102	1003-187
3435I	13/16	7/8-9	1-1/4	9/16	1	1-1/2	0.142	1003-188
3416I	13/16		1-1/4	9/16	1	1-1/2	0.142	1003-189
3426I	7/8	1-8	1-1/2	9/16	1	1-1/2	0.175	1003-190
3436I	1		1-5/8	5/8	1	1-3/4	0.2	1003-191
3446I	1-1/16	1-8	1-5/8	11/16	1-1/2	2	0.23	1003-192
3417I	1		1-5/8	5/8	1	1-1/2	0.21	1003-193
3418I	1-1/16	1-8	1-5/8	11/16	1-1/2	2	0.25	1003-194

Metric Size

ORDER NO.	Table Slot	Thread Size	A	B	C	D	E	CODE NO.
3412M	10	M8	9.7	16	6	12	22	1003-020
3423M	12	M10	11.7	18	7	14	22	1003-021
3414M	14	M12	13.7	22	8	16	28	1003-022
A3424M	16	M12	15.7	25	8	16	28	1003-023
B3424M	16	M14	15.7	25	8	16	28	1003-024
3415M	18	M16	17.7	28	11	20	32	1003-025
3416M	20	M18	19.7	32	12	24	38	1003-026
3417M	22	M20	21.7	35	14	28	38	1003-027
3418M	28	M24	27.7	44	18	36	38	1003-028