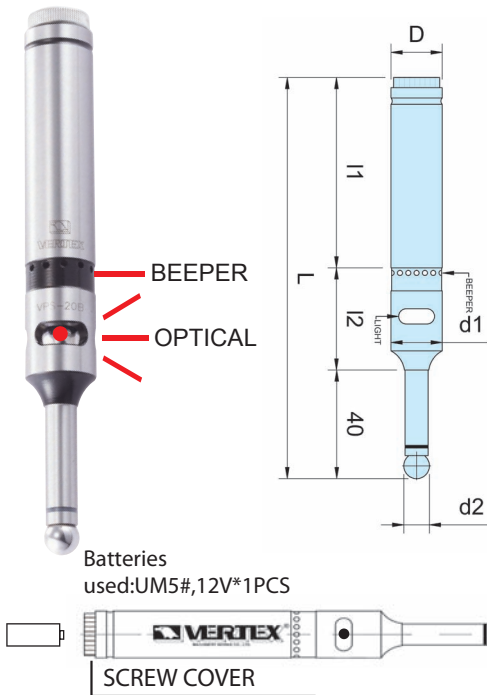


Edge Finder with Beeper & Optical



- No need to rotate while measuring.
- The red light was sealed with setting red-gel; it can concentrate the light and resist water.
- The sensor beeps while the red light is on.
- The sensor will beep when the user couldn't see the reverse side or get a clear sight.
- Example. If sensor's light is working, visually you couldn't see inside of the inner hole, while probing the user can be warned by the beeper.
- When probe the deep hole, you can't see the red light, but you can hear the sound from beeper.
- Accuracy: within $\pm 0.005\text{mm}$.

OPTICAL TYPE WITH BEEPER

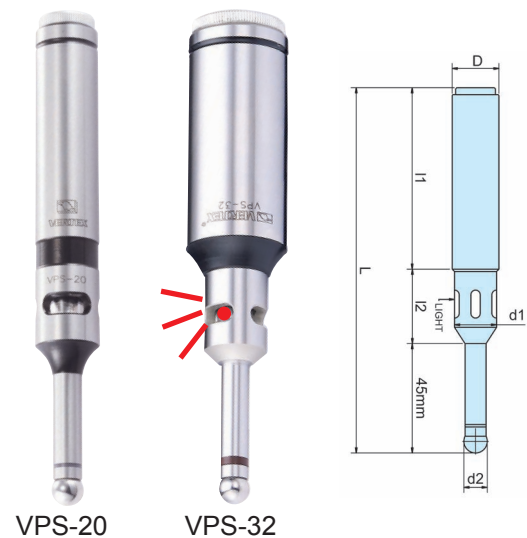
Unit:mm

ORDER NO.	D	d1	d2	L	I1	I2	BATTERY TYPE	WEIGHT (kg)	CODE NO.
VPS-20B	$\varnothing 20$	18	10	157	77	41	UM-5#(SP) x1PCS/12V	0.4	3402-001
VPS-32B	$\varnothing 32$	18	10	157	74	41		0.7	3402-002
VPS-3/4B	$\varnothing 3/4$	18	10	157	74	41		0.7	3402-012

Touch Point Sensor

Optical Type

Without Beeper



- High sensitivity position sensor.
- Red pilot can be seen clearly.
- Whole travel of red pilot is sparkling, detecting also can be done during turning while spindle stops.
- Location of end surface, outer circle dia., inner circle dia. of the work-piece for processing can be detected with full effect.
- Devised with safety line excess, ball supported by spring, so even line excess, it will be separated easily from the base shown as the fig.
- The precision will reach up to micrometer while the ball returns to center position.
- Edge Finder
- Accuracy: Within $\pm 0.005\text{mm}$

OPTICAL TYPE

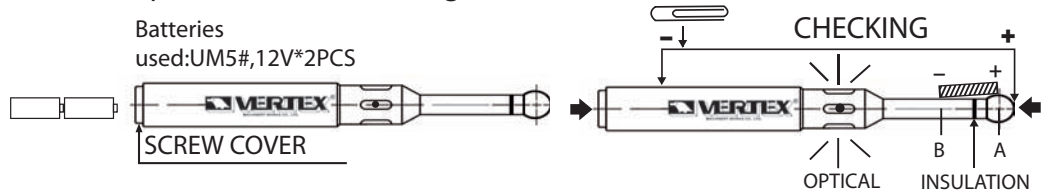
Unit:mm

ORDER NO.	D	d1	d2	L	I1	I2	BATTERY TYPE	WEIGHT (kg)	CODE NO.
VPS-20	20	18	10	157	76	33	UM-5#(SP) x2P/R1.1/1.5V	0.4	3402-003
VPS-32	32	18	10	157	74	41		0.7	3402-004

After Reading the Following instruction, please use touch point sensor correctly due to it's a highly sensitive position detector. Don't Rotate the touch point sensor while using it.

1. Install BATTERY

Take off the screw cover and insert batteries correctly. Do not insert batteries upside down.

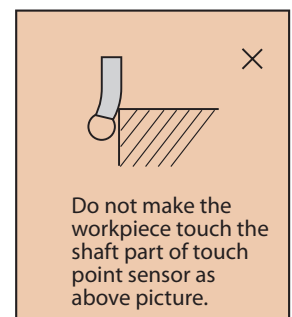
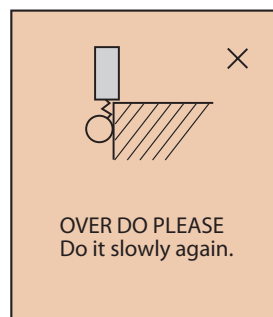
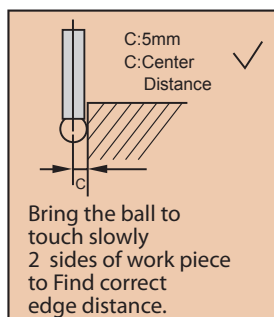


2. CONFIRMATION OF LIGHTING

CHECK the lighting of red lamp by touching A-B part with a metal (clip, L-PLATE etc.)

3. MEASURING METHOD

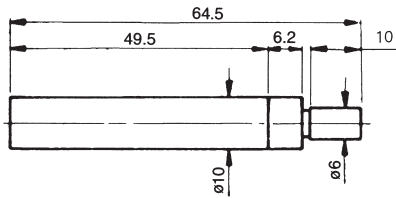
As soon as the ball (outside dia. 10mm \varnothing) touches the work piece with the main spindle stopped, The red lamp lights on.



請注意 / 光電式尋邊器不適合迴轉使用
Notice: optical edge finder is not suited FOR Rotation.



VPS-201



This series is a high precision setting device for positioning the accurate center between tool spindle of machine and reference surface of working at low-cost and saving time.

Accuracy : within ± 0.005 mm

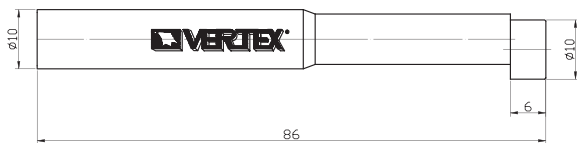
Made of tool steel, hardened and ground.

Suitable rotation speed : VPS-201 450 to 600rpm.

VPS-401 600 to 1,000 rpm

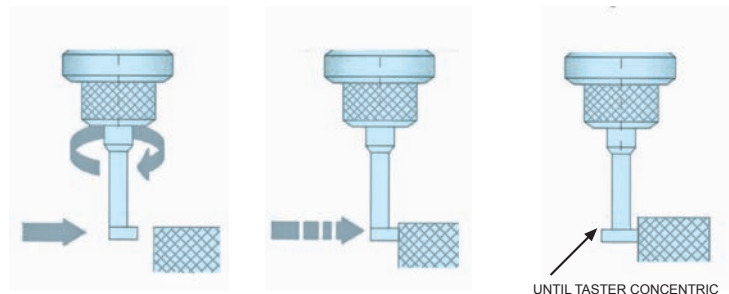


CREAMIC TYPE VPS-201C



MECHANICAL TYPE

ORDER NO.	VPS-201	VPS-201C
WEIGHT (KG)	0.03	0.06
CODE NO.	3402-005	3402-007



UNTIL TASTER CONCENTRIC

Touch Point Sensor

Deluxe Type



VPS-401



STEEL



VPS-401C

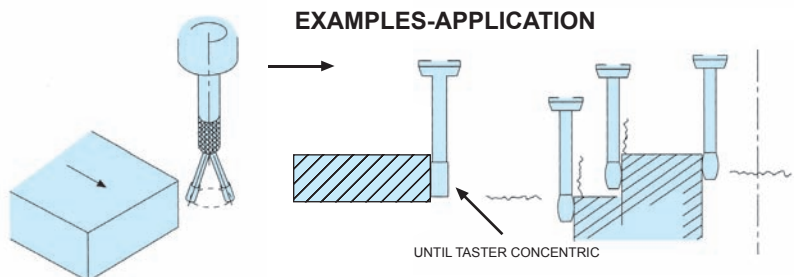
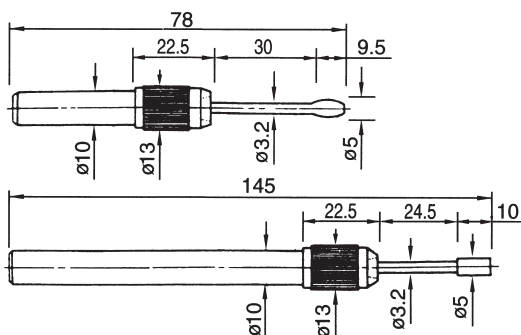
CERAMIC

FEATURES:

- Material: high-carbon steel.
- Accuracy: within ± 0.003 mm
- Hardness: HRC $58^{\circ} \pm 1^{\circ}$
- R.P.M. Within 600-1000
- Suitable for milling machine. Drill machine and boring machine.
- Edge Finder

VPS-401 (2 PCS/SET)
VPS-402A(LONG) SINGLE
VPS-402B(SHORT) SINGLE

ORDER NO.	VPS-401	VPS-401C
PCS/SET	2PCS/SET	2PCS/SET
MATERIAL	STEEL	CERAMIC
WEIGHT (KG)	0.26	0.26
CODE NO.	3402-006	3402-008

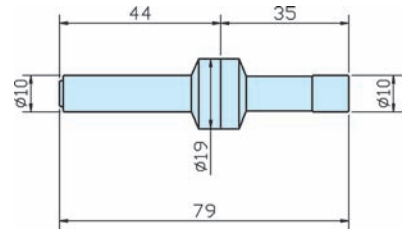


UNTIL TASTER CONCENTRIC

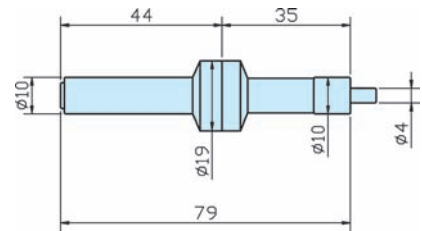
MECHANICAL TYPE



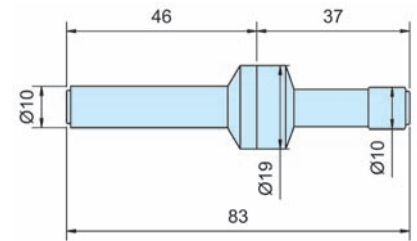
VPS-301 STEEL
VPS-301S STAINLESS



VPS-302 STEEL
VPS-302S STAINLESS



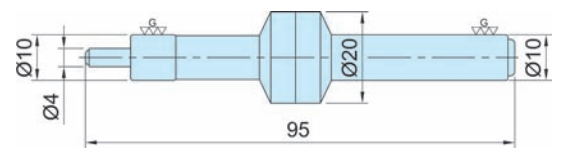
VPS-301C CERAMIC TYPE



NEW



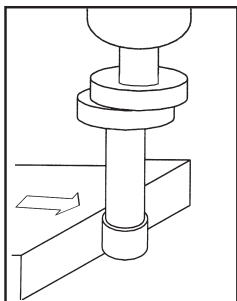
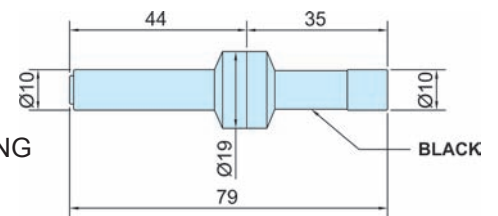
VPS-302C CERAMIC TYPE



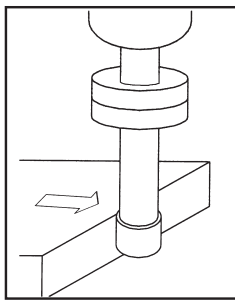
NEW



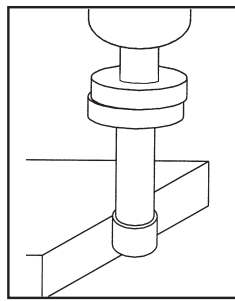
VPS-303 NON-MAGNETIC COATING



Spindle runs about 500rpm. move spindle closed to measuring surface.



When measuring probe touches workpiece, it looks in one part.



When the probe and shank are in alignment, probe will slide out of rotating center. Now, the center spindle is located 5mm away from measuring surface

- Accuracy of zero point to point is within $\pm 0.003\text{mm}$
- R.P.M. within 450-600.
- Max. flange can be clear your sight sense.
- MIN.(4mm) can be test mini hole for your workpiece.

ORDER NO.	MATERIAL	HARDNESS	WEIGHT (kg)	CODE NO.
VPS-301	ALLOY STEEL	HRC 56°	0.06	3402-100
VPS-302			0.05	3402-101
VPS-301S	STAINLESS	HRC 60°	0.06	3402-102
VPS-302S			0.06	3402-103
VPS-301C	CERAMIC	HRC 60°	0.06	3402-104
VPS-302C	CERAMIC	HRC 60°	0.06	3402-105
VPS-303	NON-Magnetic Coating	HRC 56°	0.06	3402-106