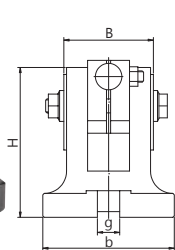


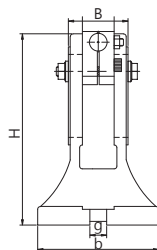
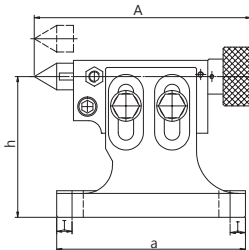
B. TAILSTOCK



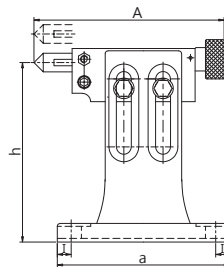
TS-1



TS-1



TS-2~TS-4



TS-3

Tailstock

Unit:mm

ORDER NO.	adjustable(h)		A	B	H	I	a	b	g	SUIT FOR MODEL	G.W. kgs	Meas. CFT	CODE NO.
	highest	lowest											
TS-1	108	80	155-180	64	107	11	134	94	16	HV-4, HV-6, VSI-4, VSI-5, BS-0, VUT-6, VU-100, VU-150	3.9	0.4	1001-022
TS-2	150	115	170-195	64	150	11	155	110	16	BS-1, CC-6, CS-6, HV-8	5.5	0.4	1001-023
TS-3	205	130	210-235	64	205	13	185	138	16	CS-8, HV-10, HV-12, CC-8, VUT-10, VUT-12, VU-200	8.1	0.4	1001-024
TS-4	260	182	210-235	75	260	17	205	144	16	HV-14, CC-12, HV-16	11.9	0.7	1001-025

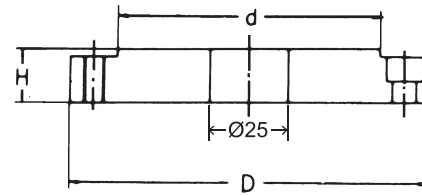


Optional For Rotary Table



-0.035
-0.015
d FOR 3 JAW CHUCK

C. FLANGE



FLange for VSC-A TYPE
 FLT-103 For VSC-3F FLT-103A For VSC-3A
 FLT-104 For VSC-4F FLT-104A For VSC-4A
 FLT-0 For VSC-5F FLT-0A For VSC-5A
 FLT-1 For VSC-6F FLT-1A For VSC-6A
 FLT-2 For VSC-7F FLT-2A For VSC-7A
 FLT-3 For VSC-8F FLT-3A For VSC-8A

Flange

Unit:mm

ORDER NO.	D	d	H	SUIT FOR MODEL	WEIGHT kgs	CODE NO.
FLT-103	90	60	20	HV-4 VU-100	0.71	1001-036
FLT-104	113	80	20	HV-6 VU-150, VUT-6	1.0	1001-037
FLT-0	138	100	20	HV-6, 8 VU-150,200, VUT-6	1.9	1001-040
FLT-1	170	130	21	HV-8, 10 VU-200, VUT-10	3.3	1001-041
FLT-2	195	155	24	HV-10, 12, 14 VUT-10,12	5.2	1001-042
FLT-3	210	160	24	HV-10,12, 14, 16 VUT-12	4.9	1001-043

Unit:mm

ORDER NO.	D	d	H	SUIT FOR MODEL	T-NUT SIZE	BOLT	WEIGHT kgs	CODE NO.
FLT-103A	90	55	20	HV-4 VU-100	M8x10 3412M	M8x20L	0.71	1001-044
FLT-104A	113	72	20	HV-6 VU-150, VUT-6	M8x10 3412M	M8x20L	1.0	1001-045
FLT-0A	138	100	20	HV-6, 8 VU-150,200, VUT-6	M8x10 3412M	M8x20L	1.9	1001-046
FLT-1A	170	130	21	HV-8, 10 VU-200, VUT-10	M10x14 SPECIAL SIZE	M10x25L	3.3	1001-047
FLT-2A	195	155	24	HV-10, 12, 14 VUT-10,12	M10x14 SPECIAL SIZE	M10x25L	5.2	1001-048
FLT-3A	210	165	24	HV-10,12, 14, 16 VUT-12	M10x16 SPECIAL SIZE	M10x30L	4.9	1001-049

D. 3 JAW CHUCK

3-Jaw Chuck For Rotary Table, Indexer Economical Type

● Detail specification & Order NO. shown on page E9



ORDER NO.

VSC-3A SUIT FOR HV-4, VU-100(FLT-103A)
 VSC-5A SUIT FOR BS-0 OR
 HV-6, VUT-6, VU-150(FLT-0A)
 VSC-6A SUIT FOR BS-1 OR
 HV-8, 10, VU-200(FLT-1A)
 VSC-7A, 8A SUIT FOR BS-2 OR
 HV-10, 12, 14, VUT-10, 12(FLT-2A,FLT-3A)
 VSC-10A SUIT FOR HV-14, 16

Reversible type

For indexer, The fixing hole is from front.

ORDER NO.

VSK-6A SUIT FOR CS-6, CC-6
 VSK-8A SUIT FOR CS-8, CC-8
 VSK-12A SUIT FOR CC-12

ORDER NO.	D-Size	d1	d2	THREAD	SUIT FOR MODEL
VSC-5A	130mm(5")	115	100	3-M8	BS-0, HV-6,VUT-6, VU-150
VSC-6A	160mm(6")	142	130	3-M8	HV-8, HV-10, VU-200
VSC-7A	190mm(7 1/2")	172	155	3-M10	BS-2, HV-10,12,14, VUT-10,12
VSC-8A	200mm(8")	180	165	3-M10	
VSC-10A	250mm(10")	225	206	3-M12	HV-14,16

ORDER NO.	D-Size	d1	d2	THREAD	SUIT FOR MODEL
VSK-6A	160mm(6")	142	130	3-M8	CS-6, CC-6
VSK-8A	200mm(8")	180	165	3-M12	CS-8, CC-8
VSK-12A	315mm(10")	285	260	3-M16	CC-12

ROTARY TABLE