



# Clamping Nuts For Collets



ER CLAMPING NUT SYSTEM

DIN 6499



ER20M



ER16M



ER11MS



ER40KM  
WITH A BEARING



ER40UM



ER16UM

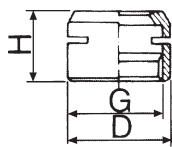


FIG.1 ER11,16,20MS

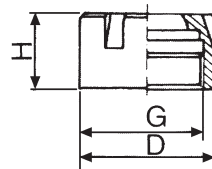


FIG.2 ER11,16,20M  
ER8M, 25M

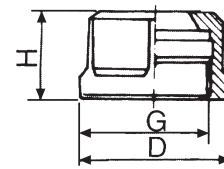


FIG.3 ER11,16,20UM

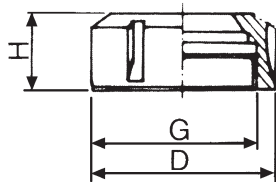


FIG.4 ER25,32,40,50UM

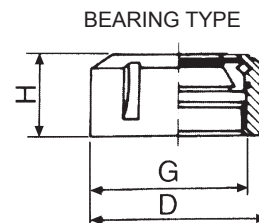


FIG.5 ER40,50KM



## CLAMPING NUTS

ORDER NO.	Fig.	COLLET TYPE	D	H	G	WEIGHT KG.	CODE NO.
V-800	3	ER11UM	19	11.5	M14X0.75P	0.04	3015-001
V-801	3	ER16UM	28	17	M22X1.5P	0.05	3015-002
V-802	3	ER20UM	34	19	M25X1.5P	0.09	3015-003
V-803	4	ER25UM	42	20	M32X1.5P	0.13	3015-004
V-804	4	ER32UM	50	23	M40X1.5P	0.14	3015-005
V-805	4	ER40UM	63	25	M50X1.5P	0.25	3015-006
V-806	4	ER50UM	78	35	M64X2.0P	0.5	3015-007
V-807	1	ER11MS	16	12	M13X0.75P	0.008	3015-008
V-808	2	ER16M	22	18	M19X1.0P	0.03	3015-009
V-809	2	ER20M	28	19	M24X1.0P	0.045	3015-010
V-810A	5	ER40KM	63	29	M50X1.5P	0.3	3015-011
V-810B	5	ER50KM	78	40	M64X2.0P	0.58	3015-012
V-810C	2	ER11M	16	12	M13X0.75P	0.02	3015-013
V-810D	2	ER8M	12	10.8	M10X0.75P	0.05	3015-014
V-810E	2	ER25M	35	20	M30X1.0P	0.05	3015-015
V-811A		ER16MS	22	18	M19X1.0P	0.02	3015-016
V-811B		ER20MS	28	19	M24X1.0P	0.035	3015-017



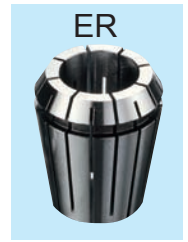
# Clamping Wrench For Collets



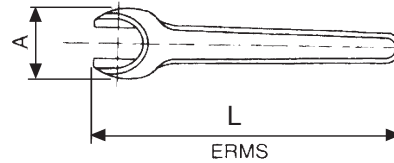
# VERTEX®

ER WRENCH SYSTEM

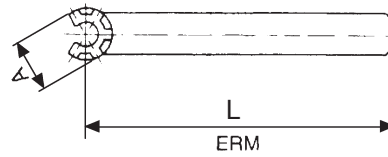
DIN6499



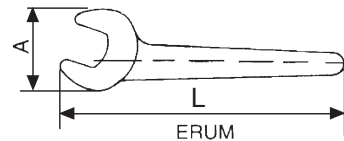
ERMS



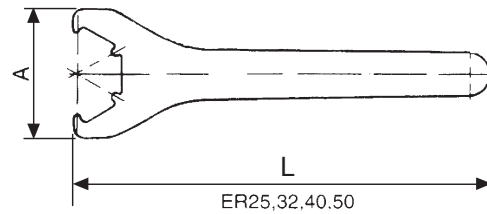
ERM



ERUM11, 16, 20



ERUM25, 32, 40, 50



ORDER NO.	TYPE	A	L	KGS	CODE NO.
V-820	ER11UM	35	135	0.07	3015-100
V-821	ER11MS	22	100	0.07	3015-101
V-822	ER11M	17	95	0.05	3015-102
V-823	ER16M	22.5	118	0.06	3015-103
V-815	ER16UM	44	140	0.08	3015-104
V-824	ER20M	28	130	0.08	3015-105
V-816	ER20UM	53	170	0.1	3015-106
V-811	ER25UM	65	210	0.2	3015-107
V-812	ER32UM	75	250	0.4	3015-108
V-813	ER40UM	90	290	0.5	3015-109
V-814	ER50UM	110	350	0.9	3015-110
V-817	ER8M	13	75	0.04	3015-111
V-818	ER25M	36.5	135	0.1	3015-112
V-825	ER40KM	90	290	0.5	3015-113
V-826	ER50KM	110	350	0.9	3015-114
V-827	ER16MS	32	120	0.12	3015-115
V-828	ER20MS	38	150	0.15	3015-116