

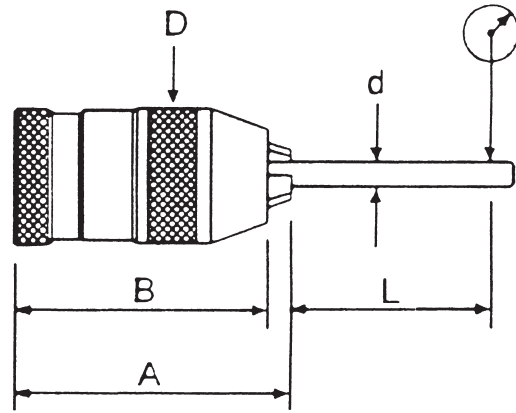


Integrated Type Keyless Drill Chucks



FOR DRILL ONLY , NOT FOR END MILL OR TAP

CAT-TYPE



ACCURACY

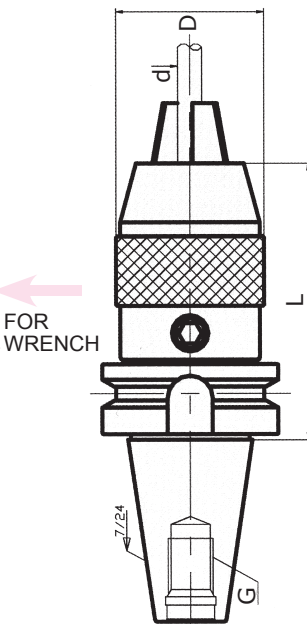
ORDER NO.	Clamping Capacity		Taper	OUTER Ø / mm	WEIGHT (kgs)	CODE NO.	ITEM NO.	d mm	L mm	Max Tolerance mm	Torque kgf-cm
	mm	inch									
INT-8-CAT30	0.5-8	1/64"-1/8"	CAT30	Ø35	0.8	3301-073	INT-8	3	25	0.05	160
INT-13-CAT30	0.5-13	1/64"-1/2"		Ø51.5	1	3301-074		6			
						8					
INT-8-CAT40	0.5-8	1/64"-1/8"	CAT40	Ø35	1.32	3301-075	INT-10	3	25	0.05	260
INT-13-CAT40	0.5-13	1/64"-1/2"		Ø51.5	2.1	3301-076		6			
						10					
INT-16-CAT40	3-16	1/8"-5/8"	CAT50	Ø58	2.26	3301-077	INT-13	5	30	0.05	400
INT-13-CAT50	0.5-13	1/64"-1/2"		Ø51.5	3.95	3301-078		10			
						13					
INT-16-CAT50	3-16	1/8"-5/8"		Ø58	4.2	3301-079	INT-16	5	25	0.05	480
						10					
						16					



Integrated Type Keyless Drill Chucks

CAN FOR TAP

RL type keyless drill chuck with BT SHANK
SK SHANK
NT SHANK



- RL type drill has reinforce torque design to increase more clamping capacity.
- Right turn and left turn allowable.
- No sudden drop when stop or suddenly shift to different direction.
- Highest speed 6000rpm.
- Shorten the shank length which is stronger than traditional design improves the total rigidity.

ORDER NO.	Clamping Capacity mm / d	L	D	G	CODE NO.
BT40-VRL13	0.5-13	95	50	M16	3301-090
BT40-VRL16	3-16	113	57	M16	3301-091
SK40-VRL13	0.5-13	85	50	M16	3301-092
SK40-VRL16	3-16	95	57	M16	3301-093
NT40-VRL13	0.5-13	112	50	5/8"-11unc	3301-094
NT40-VRL16	3-16	120	57	M16	3301-095

Integrated Type Keyless Drill Chucks

FOR DRILL ONLY , NOT FOR END MILL OR TAP



FOR SPECIFICATION PLEASE SEE P.C76

The main-shafts is of integrated type, which is much more superior than the traditional design. The major features are as follows:

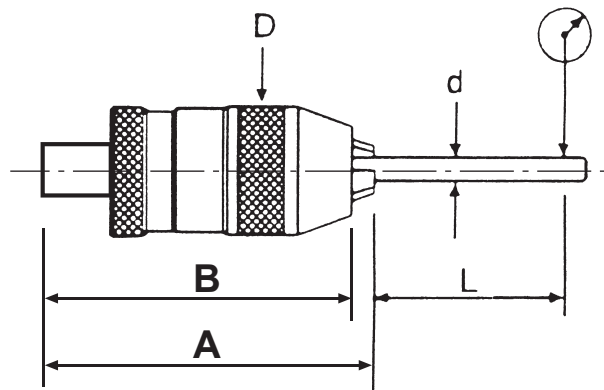
- Extremely rigid construction. Accuracy is same as page C66
- The accumulative tolerances can be reduced to a minimum, since the traditional mechanism requiring an ARBOR to connect the Drill Chucks which will generate the accumulative tolerances. The Integrated type Keyless Drill Chuck is designed to solve this problem totally.
- Prevent the Drill Chucks from falling out.
- Extremely safe in operation.
- 2500 R.P.M.



STANDARD ACCES.

ACCURACY

ITEM NO.	d mm	L mm	Max Tolerance mm	Torque kgf-cm
INT-8	3	25	0.05	160
	6	30		
	8			
INT-10	3	25	0.05	260
	6	30		
	10			
INT-13	5	30	0.05	400
	10	25		
	13			
INT-16	5	25	0.05	480
	10	30		
	16			





Integrated Type Keyless Drill Chucks VERTEX®

ORDER NO.	Clamping Capacity		Female Taper DIN or Jacobs	OUTER Ø / mm	Length		WEIGHT (kgs)	CODE NO.
	Ø mm	Ø inch			Open B mm	Closed A mm		
INT-8-MT-2	0.5-8	0-5/16"	MT-2	36	150	157	0.8	3301-030
INT-8-JC-20	0.5-8	0-5/16"	JC-20	36	134	141	0.8	3301-031
INT-8-BT30	0.5-8	1/64"-1/8"	BT30	36	78	85	1	3301-070
INT-8-BT40	0.5-8	1/64"-1/8"	BT40	36	77	86	1.5	3301-072
INT-8-NT30	0.5-8	1/64"-1/8"	NT30	36	67	75	0.8	3301-080
INT-8-NT40	0.5-8	1/64"-1/8"	NT40	36	66	74	1.3	3301-081
INT-8-SK40	0.5-8		SK-40	36	81	87	1.4	3301-083
INT-13-R8	1-13	1/64"-1/2"	R8	50	196	205	1.5	3301-032
INT-13-MT2	1-13	0-1/2"	MT-2	50	172	184	1.3	3301-082
INT-13-MT3	1-13	0-1/2"	MT-3	50	190	201	1.4	3301-033
INT-13-MT4	1-13	0-1/2"	MT-4	50	216	227	1.8	3301-034
INT-13-JC-20	1-13	0-1/2"	JC-20	50	153	164	1.4	3301-035
INT-13-JC-25	1-13	0-1/2"	JC-25	50	163	174	1.6	3301-036
INT-13-JC-32	1-13	0-1/2"	JC-32	50	173	185	1.8	3301-037
INT-13-NT30	1-13	0-1/2"	NT-30	50	86	99	1.4	3301-038
INT-13-NT40	1-13	0-1/2"	NT-40	50	85	96	1.8	3301-039
INT-13-BT30	1-13	1/64"-1/2"	BT30	50	96	108	1.4	3301-071
INT-13-BT40	1-13	0-1/2"	BT-40	50	100	111	2	3301-040
INT-13-BT50	1-13	0-1/2"	BT-50	50	106	117	4.7	3301-041
INT-13-NT50	1-13	0-1/2"	NT-50	50	100	112	4.3	3301-059
INT-13-SK30	1-13		SK-30	50	99	111	1.34	3301-084
INT-13-SK40	1-13		SK-40	50	100	113	1.9	3301-085
INT-13-SK50	1-13		SK-50	50	93	106	3.9	3301-087
INT-16-R8	3-16	1/8"-5/8"	R8	57	198	211	1.9	3301-042
INT-16-MT3	3-16	1/8"-5/8"	MT3	57	194	207	1.9	3301-043
INT-16-MT4	3-16	1/8"-5/8"	MT4	57	219	232	2	3301-044
INT-16-JC-20	3-16	1/8"-5/8"	JC-20	57	152	165	1.8	3301-045
INT-16-JC-25	3-16	1/8"-5/8"	JC-25	57	162	178	1.7	3301-046
INT-16-JC-32	3-16	1/8"-5/8"	JC-32	57	184	179	2.2	3301-047
INT-16-NT40	3-16	1/8"-5/8"	NT-40	57	113	126	2.6	3301-049
INT-16-BT40	3-16	1/8"-5/8"	BT-40	57	113	127	2.5	3301-050
INT-16-BT50	3-16	1/8"-5/8"	BT-50	57	111	124	5	3301-051
INT-16-NT50	3-16	1/8"-5/8"	NT-50	57	104	117	4.5	3301-056
INT-16-SK40	3-16	1/8"-5/8"	SK-40	57	127	141	2.4	3301-057
INT-16-SK50	3-16	1/8"-5/8"	SK-50	57	97	110	3.9	3301-058

ORDER NO.	SIZE DIN 69871A	Clamping range (Ømm)	D	L		WEIGHT (kg)	CODE NO.
				Minimum	Maximum		
INT-8-SK40	SK40-APU08	0.5-8	35.6	81	87	1.4	3301-001
INT-13-SK40	SK40-APU13	1-13	52	100	113	1.9	3301-002
INT-13-SK50	SK50-APU13	1-13	52	93	106	3.9	3301-004
INT-13-SK30	SK30-APU13	1-13	52	99	111	1.34	3301-006
INT-16-SK40	SK40-APU16	3-16	56.8	127	140	2.4	3301-007
INT-16-SK50	SK50-APU16	3-16	56.8	97	110	3.9	3301-008

ORDER NO.	Clamping Capacity		Taper	OUTER Ø / mm	WEIGHT (kgs)	CODE NO.
	mm	inch				
INT-8-CAT30	0.5-8	1/64"-1/8"	CAT30	Ø36	0.8	3301-073
INT-13-CAT30	0.5-13	1/64"-1/2"		Ø50	1	3301-074
INT-8-CAT40	0.5-8	1/64"-1/8"	CAT40	Ø36	1.32	3301-075
INT-13-CAT40	0.5-13	1/64"-1/2"		Ø50	2.1	3301-076
INT-16-CAT40	3-16	1/8"-5/8"	CAT50	Ø57	2.26	3301-077
INT-13-CAT50	0.5-13	1/64"-1/2"		Ø50	3.95	3301-078
INT-16-CAT50	3-16	1/8"-5/8"	Ø57	4.2	3301-079	