

Knurling Wheels DIN 403 for Form Knurling



AA



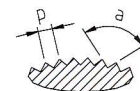
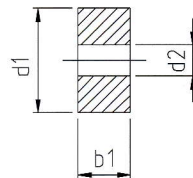
BL 30°



BR 30°



GE 30°



Variations

Type

Ø x width x bore
d1 x b1 x d2

Pitch p
Profile angle a

No. 08 / milled, with chamfer, HSS

AA

10 x 4 x 4

0,6 / 90°

BL30

15 x 6 x 4

0,8 / 90°

BR30

20 x 6 x 6

1,0 / 90°

GE30

20 x 8 x 6

1,2 / 90°

1,5 / 90°

1,6 / 90°

1,8 / 90°

Ø x width x bore (inch)
d1 x b1 x d2

Pitch p
Profile angle a

3/4 x 3/8 x 1/4

cp 20

cp 25

cp 30

Knurling Wheels DIN 403 for Cut Knurling



AA



BL 15°



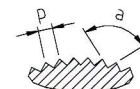
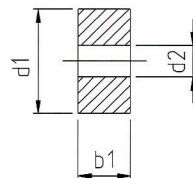
BL 30°



BR 15°



BR 30°



Variations

Type

Ø x width x bore (mm)
d1 x b1 x d2

Pitch p
Profile angle a

No. 09 / milled, without chamfer, HSS

AA

25 x 6 x 8

0,6 / 90°

BL15

0,8 / 90°

BL30

1,0 / 90°

BR15

1,2 / 90°

BR30

1,5 / 90°

1,6 / 90°

1,8 / 90°