

Cavo Technology

LC OPTICAL PATCH CORD

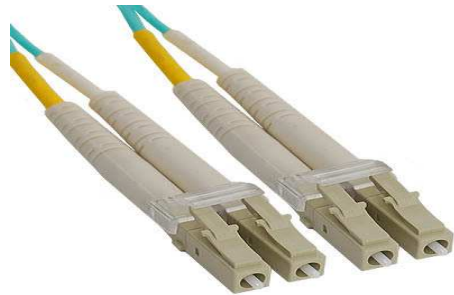
FEATURES:

- Simplex or duplex
- PC or APC end-face finishing
- Singlemode or multimode
- 3.0mm, 2.0mm or 0.9mm
- RJ-45 style housing with push-pull coupling mechanism
- Compliant With Telcordia GR-326-CORE specification



APPLICATION:

- Telecommunication Networks
- Local Area Networks (LANs)
- Active Device Termination
- Wide Area Networks (WANs)
- Industrial, medical & military
- CATV
- Data processing networks
- Video
- Premise Installations



SPECIFICATIONS:

PARAMETERS	TEST CONDITION	VALUE(dB)	
		Multimode	Singlemode
Insertion Loss	0.85/1.3um or 1.31/1.55um	≤0.3	≤0.3
Return Loss	0.85/1.3um or 1.31/1.55um	≥35	≥50(APC≥60)
Interchangeability	Connect Randomly	<0.2	<0.2
Vibration	5~50Hz, 1.5mm Amplitude	<0.1	<0.1
Tensile Strength	0~15Kgf (0.9mm Exception)	<0.1	<0.1
High Temperature	+85°C, During 100 Hours	<0.2	<0.2
Low Temperature	-40°C, During 100 Hours	<0.2	<0.2
Temperature Cycle	-40°C~+85°C, During 5 Cycles	<0.2	<0.2
Humidity	+25°C~+65°C, 93%R.H, 100 Hours	<0.2	<0.2

Ordering Information :

1. Connector Type: FC, SC, LC, ST, MTRJ, MU, E2000, MPO, DIN, D4
2. Ferrule End-face: PC, UPC, APC
3. Core Type: Single Mode (SM: 9/125μm), Multi Mode(MM: 50/125μm or 62.5/125μm) Simplex or Duplex
4. Cable Diameter : Φ3.0mm, Φ2.0mm, Φ0.9mm;
5. Cable Length : 1, 2, 3 meter or customized
6. Cable Type: PVC, LSZH, OM3, OFNR, OFN
7. Part Number Patch Cord : CV-LCWWYYD-VV VV = 30(3m)/50(5m) WW = Connector Type YY = SM/MM