

WÖHLER

NEW



COMPACT AND RUGGED HIGH DEFINITION CAMERA.

Wöhler VIS 700 HD-Video Inspection System

Digital video inspection with individual focus control

The Measure of Technology



Made in
Germany

HD
TOUCH-
SCREEN

VOICE
RECORDING

VIDEO
FUNCTION

PHOTO
FUNCTION

HOME
FUNCTION

EASY TO
CLEAN

LOCATOR
TRANSMITTER

WLAN
TRANSMISSION

POWER
UP TO 4h

Wöhler VIS 700

HD-Video Inspection System

The new fully digital Wöhler camera generation

The Wöhler VIS 700 offers precisely what professionals have been waiting for: Razor sharp images in HD quality, a focus function for focusing precisely on the object requiring attention, and practical control of the pan & tilt camera head by means of a joystick. Ideal conditions for the inspection of waste water pipes, fl ue gas and ventilation lines as well as NDT applications.

A new digital high-resolution sensor assures amazingly sharp images. The highlight: The focus function makes it possible to precisely control the depth of focus. If something appears “suspicious” in the image, simply focus precisely on that position. A simple tip on the joystick ensures precisely the position in question is displayed the most clearly. Professionals are able to plan their maintenance services on the basis of clearly visible facts. The displayed level indication ensures you to keep orientation in the pipe. It indicates the angle at which you have aligned the camera head with regard to the bottom of the pipe. The Home function allows you to realign the camera head straight forward when needed.

HD images are displayed for you on the brilliant, high-resolution monitor – the perfect combination for images of the highest-possible quality. At the same time your colleague is able to follow the

images and videos on a smartphone or tablet, because the Wöhler VIS 700 is designed to transmit live video data to smart devices via Wireless LAN.

Simple to operate via joystick and touchscreen

You concentrate on analyzing the damage and not on operating the camera. The pan and tilt-adjustable lens is easily controlled using the joystick. Settings and extras are opened intuitively by tapping the touchscreen monitor.

Let's be honest: Generally speaking, you cannot be squeamish when carrying out an inspection. And there is no need to be, because the rugged, sealed case protects the Wöhler technology throughout the inspection. At the end of your working day simply open the service flap and clean the case shell and camera rod with water. Just three minutes of your time for a permanently hygienic work tool.

ADVANTAGES

- HD image quality thanks to a high-resolution digital camera sensor
- Ø 40 mm waterproof pan & tilt color camera head
- Intuitive to operate with a joystick and 7" HD touchscreen
- Motor driven focus, adjustable with joystick
- Built-in radio transmitter facilitates wireless location detection
- Position and level display for orientation in the pipe
- Comments function to add a damage description to the picture
- Transmission of live images via Wireless LAN





Razor sharp pictures in HD-quality, clear menu and comfortable to hold



Precise location of the camera head with the Wöhler L 200 Locator



Secure drain inspection with the waterproof camera head



Inspection of flue gas lines from Ø 56 mm: easily negotiates tight bends of 87°



Fast cleaning for lasting hygiene: Simply splash the robust case and the viper with water



The focus function makes it possible to precisely control the depth of focus

Overview of Functions

Razor sharp HD-Video Inspection

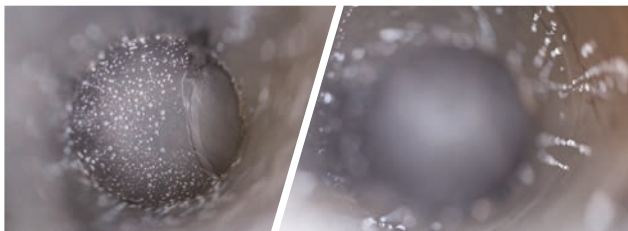
Digital recording and high-resolution photo / video playback allow a sharp image.

Flexible Operation

The monitor can be attached to the case holder in two different positions. The image rotate automatically.

Individual control of sharpness

The motorized focus can be adjusted by touchscreen or joystick.



Far range

Close range

Comments & Voice Notes

A comments function allows you to add descriptions to captured photos. It is also possible to add voice notes to video footage.

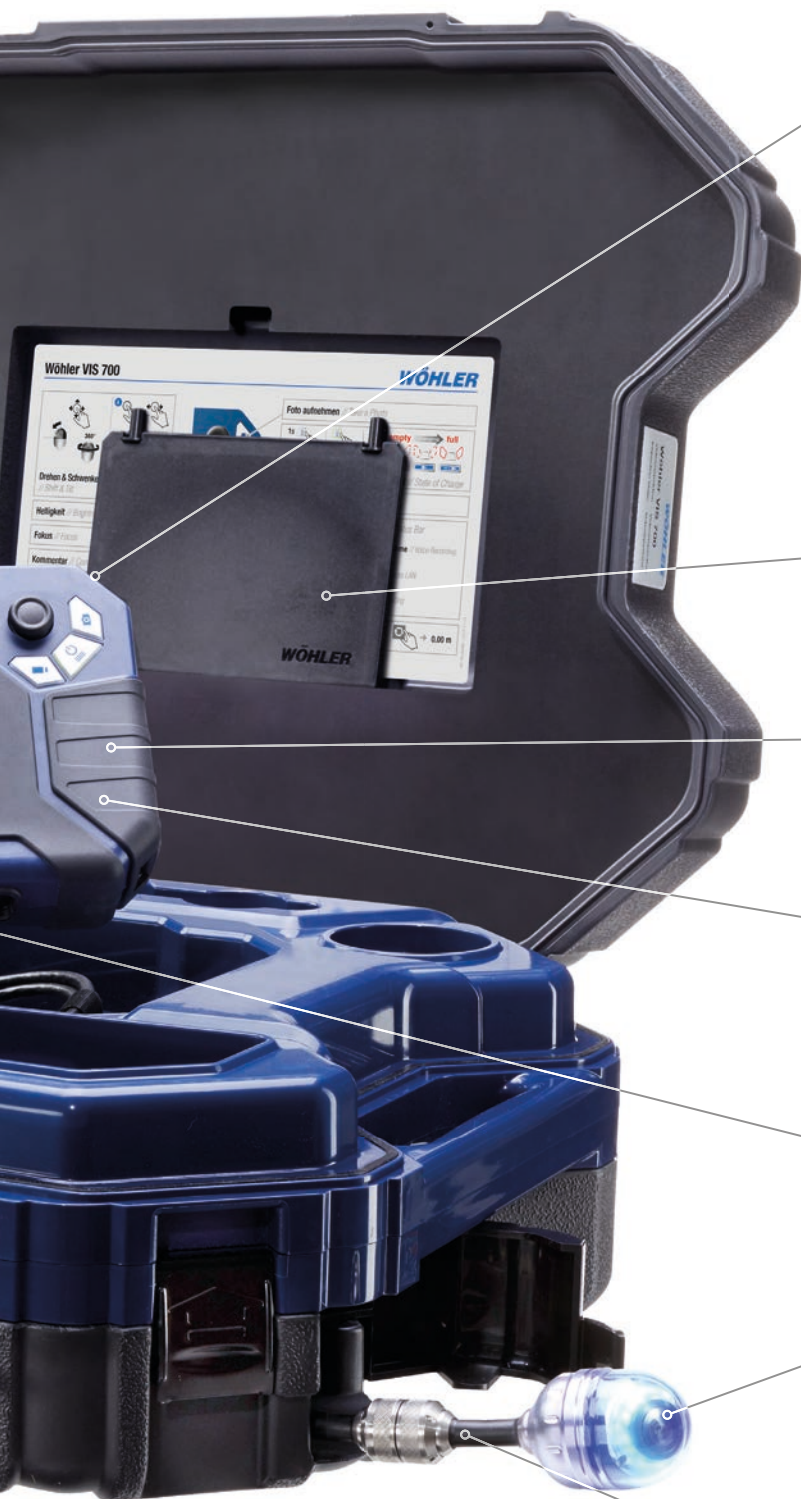
Position and angle meters

Ensures the user knows where top and bottom are in the pipe at all times. The length of unwound cable is sensed electronically and displayed for pinpoint positioning.

Easy cleaning and a lot of space for accessories

The case is easy to clean thanks to the easily removable top shell. Moreover, the twinwall hard case also protects the camera head and the monitor.





Solid Hand-held (possible to pull-out)

The individually adjustable holder ensures a secure hold by tapping the touchscreen monitor.



Anti-glare protection

The anti-glare protection is stored in the case. If necessary it can be fixed to the monitor.

Transmission of live images by Wireless-LAN

To transmit the video signal to an external monitor or your smartphone / tablet.

Powerful Li-ion battery

With a respective operating battery life of 4 hours – high speed charging via the latest USB standard (USB-C connection).

USB stick & SD card slot

Save your pictures and videos directly to the SD card or an USB stick.

Pan & tilt color camera head Ø 40 mm

Tilts 180° from left to right and pans through 360°. Precisely adjustable depth of focus.

Durable Camera Rod

The 30 m camera rod is at the same time flexible and durable because of its construction.

✂ Applications

Analyze damage and inspect:

- House connection pipes up to Ø 200 mm
- NDT applications
- Flue gas systems of Ø 56 mm and larger
- Ventilation system ductwork
- False ceilings, hollow spaces, shafts
- Industrial machines / plant
- Waste water lines of Ø 70 mm and larger

⚙ Functionality

- HD touchscreen – razor sharp recordings from any perspective
- Adjustable depth of focus
- Optics pan 360° and tilt 180° – even the smallest amount of damage is viewable
- Camera head with integrated variable frequency transmitter
- Electronically determined position and angle of the camera head shown on the display
- Home function aligns the camera head to a straight forward position – display parallel to the ground above
- Brightly illuminating color camera head, Ø 40 mm in diameter and 60 mm in length, easily negotiates tight bends
- Electronic distance counter displays position on monitor
- Bright TFT color monitor for razor-sharp images
- Battery operating time of 4 hours with a rechargeable Li-ion battery
- Fully equipped mobile solution in a rugged twinwall hard case
- Features touch screen keyboard for typed notes
- Voice notes
- Fast and effective cleaning of the camera rod

☁ Data management

- Simply record and store photos and videos on the 32 GB SD card for documentation and archiving purposes for you and your customers
- Wireless LAN interface

📍 Locator (optional)

- Transmitter integrated in camera head makes it possible to precisely locate the camera head
- Pinpoint damage repairs to pipelines
- Telescopic holder makes it easy to locate damage under floors or in ceilings
- Chalk holder with lithographic chalk to mark located damage immediately
- Long-lasting rechargeable Li-ion battery

TECHNICAL DATA

Monitor

Dimensions housing	250 x 155 x 54 mm
TFT display	7" / 16:9 format; 1280 x 800 px
Video out	HDMI
Weight	860 g
Power supply	USB C 5 V / 3 A
Power supply	3.7 V, 11.4 Ah, rechargeable Li-Ion battery
Battery operating time	4 h (battery status in display)
Operating temperature	0...40 °C
Storage temperature	-20...50 °C

Wohler pan & tilt camera head Ø 40 mm

Type	1/2.7" Color CMOS
Viewing angle, diagonal	75°
Focus distance	27 mm...∞
Light source	10 white LEDs
Protection	Waterproof to IP 67 (3 ft. depth for 30 mins.)
Dimensions	60 mm length
Transmit frequency of Locator	variable 8,9 kHz
Operating temperature	0...40 °C
Storage temperature	-20...50 °C

Camera rod

Length	30 m
Diameter	8,6 x 5,6 mm (oval)
Electronic meter counter	
Resolution	0,023 m
Max. deviation	5% of reading
Operating temperature	0...40 °C
Storage temperature	-20...50 °C

Memory

Max. capacity of SD card	32 GB
Technology	SD or SDHC, speed class 10
Recording capacity	Approx. 3 GB/h
Resolution recording	1280 x 720 HD, max. 25 fps
Recording format	AVI (H264)

Double-walled plastic case

Dimensions	18 x 44 x 50 cm (L x W x H)
Total weight incl. monitor, camera head and push rod	9,7 kg

Locator receiver

Display	Graphic camera position indicator
Output impedance, headphones	Typ. 32 Ohm
Frequency	~9 kHz
Power supply	8.9 V rechargeable Li-Ion battery
Operating temperature	0...40 °C
Storage temperature	-10...40 °C
Weight	605 g
Dimensions	32 x 14 x 7 cm (L x W x H)

Wöhler VIS 700 HD-Push rod camera

Visual inspection of house connection pipes, flue gas and ventilation lines



Application

Damage inspection and documentation for:

- House connections
- NDT Applications
- Flue gas systems
- Ventilation lines
- Waste water pipes

Wöhler VIS 700 HD Video Inspection System

Basic set

Scope of delivery

Wöhler VIS 700 monitor with 7" HD TFT incl. 1,5 m cable

Lithium-Ionen battery

Pan & Tilt camera head Ø 40 – detachable

SD memory card 32 GB

Camera push rod 8,6 x 5,6 mm – 30 m long

3 replacement plastic domes for camera head

1 anti alide mat

USB charger with USB-C cable

Plastic case

Article no.

7050 J

Wöhler VIS 700 HD-Cable camera

Visual inspection of flues, chimneys and ventilation ducts



Application

Damage inspection and documentation for:

- Flues from Ø 56 mm
- Chimneys
- Ventilation ducts

Wöhler VIS 700 HD cable camera

Basic set

Scope of delivery

Wöhler VIS 700 monitor with HD TFT monitor 7"

Glare protection

Lithium-Ionen battery

Pan & Tilt color camera head Ø 40 mm – detachable

SD memory card 32 GB

Camera cable 20m long with metric marking

3 replacement plastic domes

USB charger with USB-C cable

Plastic case

Carrying strap

Article no.

7454 J

Order Form

Article no.	Article description	qty.
7082 J	Wöhler VIS 700 HD Video Inspection System with camera rod 30 m long	
7447 J	Wöhler VIS 700 HD cable camera with camera cable 20 m long with metric marking	
4240 J	Guidance Set 100 for camera head Ø 40 mm	
7068 J	Camera Holder for Wöhler VIS 700	
3850 J	VIS Centering Brush for Wöhler VIS 700/VIS 400/VIS 2xx/VIS 3xx	
3681 J	Camera Roller Guide for camera head Ø 40 mm	
3858 J	VIS Spare brushes for Wöhler VIS 700/VIS 2xx/3xx	
3854 J	VIS Centering Star for Wöhler VIS 700/VIS 2xx/3xx	
3853 J	VIS Centering Brush Extension for Wöhler VIS 700/VIS 2xx/3xx	
21736 J	VIS Stabilization Tube for Wöhler VIS 700/VIS 400/2xx/3xx	
3634 J	Guidance Ball for flex part of camera push rod	
4705 J	Wöhler VIS Camera Trolley for camera heads	
7430 J	Wöhler L 200 Locator for camera heads	
2641 J	Wöhler Protection Sleeve for camera head Ø 40 mm	

Billing address / customer		Delivery address (if different to billing address)							
Company	_____	Company	_____						
Name	_____	Name	_____						
Street/house no.	_____	Street/house no.	_____						
ZIP code/City	_____	ZIP code/City	_____						
Country	_____	Country	_____						
Telephone	_____	Fax	_____						
Mobile	_____	E-Mail	_____						
Customer number	<table border="1" style="display: inline-table; vertical-align: middle;"> <tr> <td style="width: 20px; height: 20px;"></td> <td style="width: 20px; height: 20px;"></td> <td style="width: 20px; height: 20px;"></td> <td style="width: 20px; height: 20px;"></td> <td style="width: 20px; height: 20px;"></td> <td style="width: 20px; height: 20px;"></td> </tr> </table>								
Date	_____	Signature or company stamp	_____						



Wöhler Technik GmbH
Headquarters Germany
 Wöhler-Platz 1 · 33181 Bad Wünnenberg
www.woehler-international.com

Your contact