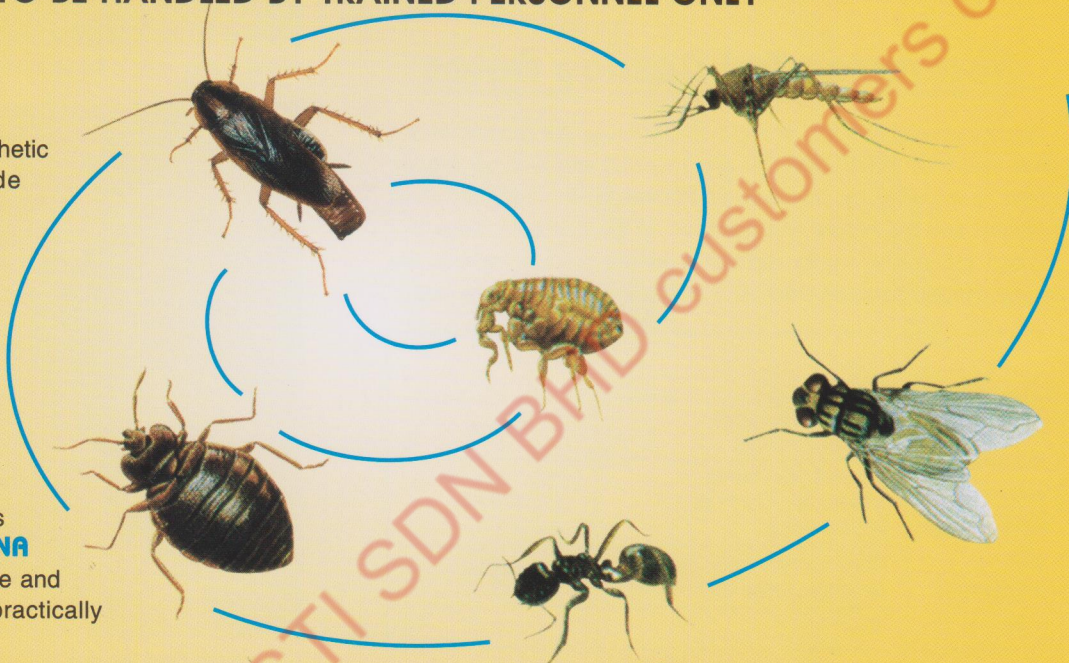




GOOD PERFORMANCE RESIDUAL INSECTICIDE WHICH DOES NOT STAIN
TO BE HANDLED BY TRAINED PERSONNEL ONLY

FENDONA SC is a synthetic pyrethroid insecticide developed specifically for the control of major pests harmful to public health, such as disease vectors and public hygiene, nuisance, and food-storage pests. It is a broad-spectrum, high performance product that is active via contact or ingestion and provides extended control. **FENDONA SC** does not stain or corrode and the spray deposit is practically invisible.



• **FENDONA SC** has the following features:

• **BROAD SPECTRUM**

Controls mosquitoes, cockroaches, ants, bedbugs, fleas, litter beetles and flies. **FENDONA SC** is active against many strains insects that have developed resistance to other classes of insecticides.

• **GOOD CONTROL**

Provides good control at low dosage rates.

• **DOES NOT CORRODE OR STAIN**

Can be used in domestic and public areas.

FENDONA SC consists of small particles of crystalline active ingredient suspended in water. It works by blocking the passage of sodium ions through sodium channels in the nerve membranes thereby preventing transmission of the nerve impulse.



Registered by:

BASF (Malaysia) Sdn. Bhd. (182671-M)

2, Jalan U8/87, Seksyen U8, Bukit Jelutong, 40706 Shah Alam, Selangor Darul Ehsan, Malaysia.

Tel: 03-5628 3888 Fax: 03-5628 3777

Agricultural Products



The Chemical Company

Knockdown

FENDONA SC provides good knockdown performance which continues for a considerable period after application.

Flushing

FENDONA SC also has a useful flushing action. In commercial use trials involving moderate to heavy cockroach infestations, a flushing effect was observed within 5 minutes of application.

Residual Activity

In numerous laboratory studies and field trials, **FENDONA SC** has shown outstanding residual activity.

Recommended Dosage Rates

For the control of flying and crawling insects, the recommended dose rates for **FENDONA SC** are 15 or 30 mg a. i. per square metre, depending on the level of infestation, the residual effect required and the nature and condition of the treated surface. For surface treatments for the control of stored product insects, the recommended dose rates are 22.5 or 45 mg a. i. per square metre.

Premises	Target Pests	Dosage Rate / 10 Litres Of Water
Kitchens, restaurants and food storage and processing area.	Mosquitoes - adult (<i>Anopheles</i> sp.)	200 ml
	Mosquitoes - Larva (<i>Aedes</i> sp., <i>Culex</i> sp.), <i>Mansonia</i> sp.)	400 ml
	Cockroaches, ants, bedbugs, fleas, litter beetles	400 ml
	Flies	200 ml

Application

FENDONA SC is suitable for the control of crawling and flying insects in domestic, public and industrial premises. When used as directed, it can be applied in kitchens, restaurants and food storage and processing area.

FENDONA SC is suitable for use with most types of knapsack sprayers and other residual spray equipment commonly used to control public health pests. Applications should be made at low pressure, not above 30 p.s.i. (2 Bar), and using a nozzle which produces even sized droplets.

FENDONA SC should be thoroughly mixed with water to give the required concentration. Treated surfaces should be thoroughly sprayed to the point of minimal run off, ensuring uniform coverage and paying particular attention to those areas where insects are most likely to come into contact with the insecticide. Always follow the instructions as described on the product label.



Apply **FENDONA SC** with 'Fan Nozzle' as residual surface spray effective on different surfaces such as tiles, cement, wood etc.



Mix well with water in the spraying tank.



Spray along the edge area or running track of insects.



Treated surfaces should be thoroughly sprayed to the point of minimal run off.

Fendona

THIS IS A PESTICIDE ADVERTISEMENT

A good performance residual
insecticide with good knockdown.



- Proven good performance, low dose formulation
- Good insect control
- Reliable residual action
- Easy, acceptable and less risk in use

Pest Control Solutions

 **BASF**

The Chemical Company



Fendona® SC is a core weapon in the professional pest control armoury for its rapid and reliable action, good activity and less risk acceptability.

Fendona® SC is active against crawling insects by both contact and ingestion for effective control at low dose rates.

Fendona® SC stands out from other synthetic pyrethroid sprays for the efficacy and stability of its advanced micro-crystalline particle formulation.

Fendona® SC is quick and easy to apply, especially suitable for insect control in sensitive locations both, indoors and outdoors.

Proven Good Performance, Low Dose Formulation

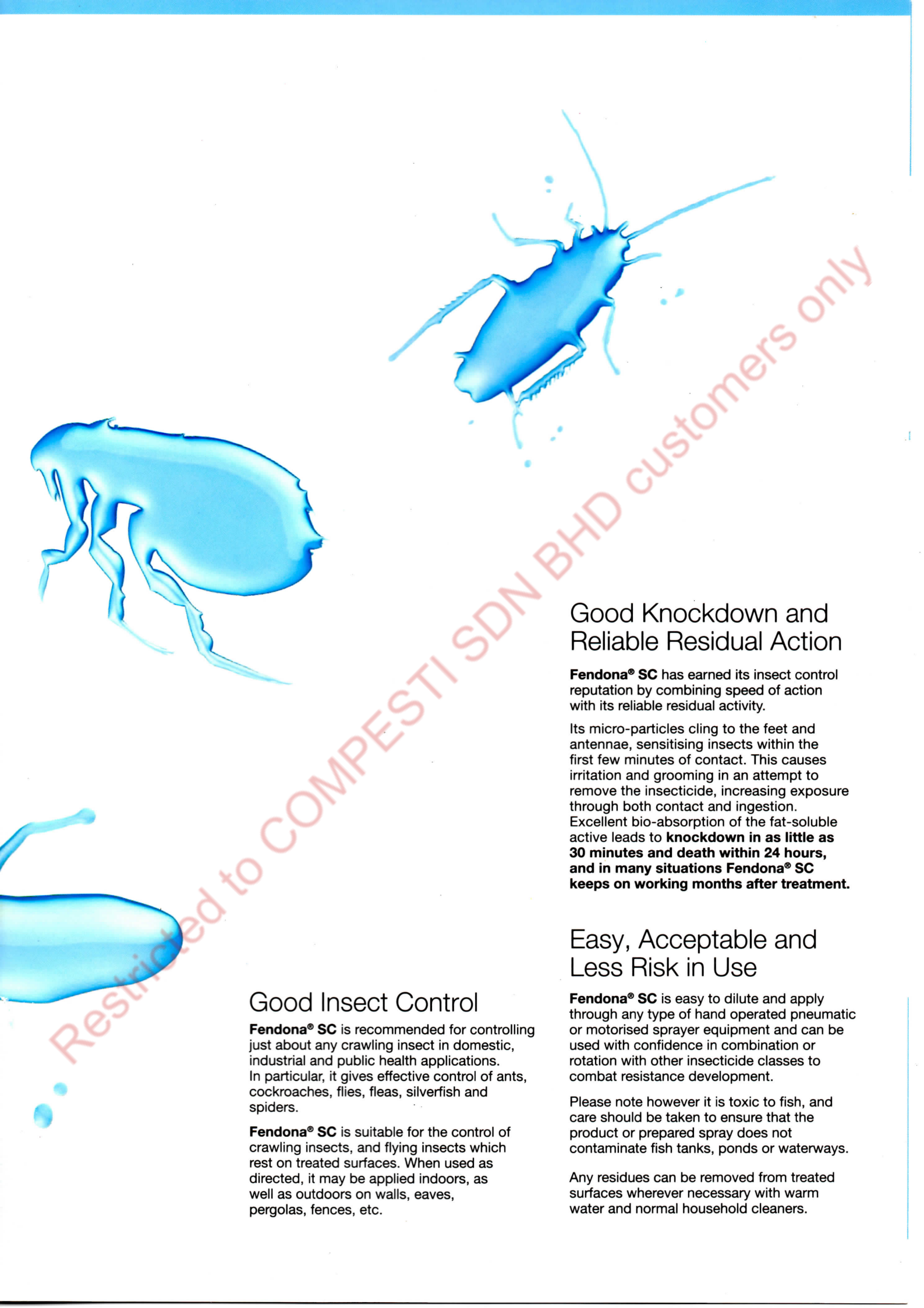
Fendona® SC insecticide is a alpha-cypermethrin formulation containing 15g/L of the synthetic pyrethroid active. It is effective against nuisance insects in a specialist suspension concentrate formulation.

Micro-crystalline particles of active ingredient adhere to many different types of surfaces, including bare and painted wood, glass, brick, concrete and masonry.

The advanced formulation further ensures dependable results at exceptionally low doses, for maximum application convenience and minimum total treatment cost.



Restricted to COMPESTISUN LTD customers only



Good Knockdown and Reliable Residual Action

Fendona® SC has earned its insect control reputation by combining speed of action with its reliable residual activity.

Its micro-particles cling to the feet and antennae, sensitising insects within the first few minutes of contact. This causes irritation and grooming in an attempt to remove the insecticide, increasing exposure through both contact and ingestion. Excellent bio-absorption of the fat-soluble active leads to **knockdown in as little as 30 minutes and death within 24 hours, and in many situations Fendona® SC keeps on working months after treatment.**

Easy, Acceptable and Less Risk in Use

Fendona® SC is easy to dilute and apply through any type of hand operated pneumatic or motorised sprayer equipment and can be used with confidence in combination or rotation with other insecticide classes to combat resistance development.

Please note however it is toxic to fish, and care should be taken to ensure that the product or prepared spray does not contaminate fish tanks, ponds or waterways.

Any residues can be removed from treated surfaces wherever necessary with warm water and normal household cleaners.

Good Insect Control

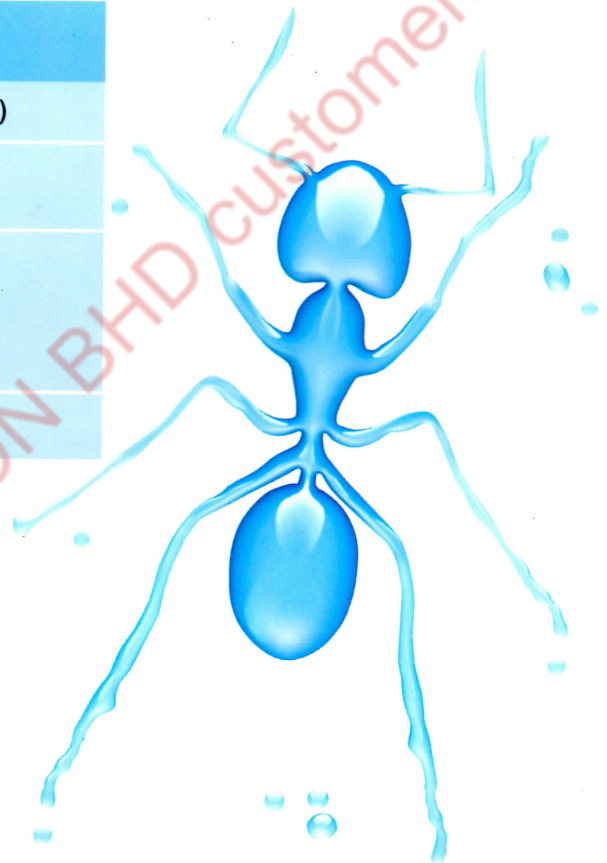
Fendona® SC is recommended for controlling just about any crawling insect in domestic, industrial and public health applications. In particular, it gives effective control of ants, cockroaches, flies, fleas, silverfish and spiders.

Fendona® SC is suitable for the control of crawling insects, and flying insects which rest on treated surfaces. When used as directed, it may be applied indoors, as well as outdoors on walls, eaves, pergolas, fences, etc.

Effective Use for the Good Value.

Fendona® SC should be thoroughly mixed with water to give the required concentration. Treated surfaces should be thoroughly sprayed to the point of minimal run-off, ensuring uniform coverage and paying attention to those areas where insects are most likely to come into contact with the insecticide. It can be applied with a knapsack sprayer or other conventional spray equipment. A higher volume of water may be required on very absorbent surfaces.

Public Health	
Kitchen, Restaurants, food storage area, processing area and others.	Mosquitoes - adult (<i>Anopheles</i> spp.)
	Mosquitoes Larva (<i>Aedes</i> spp.), (<i>Mansonia</i> spp.)
	Cockroach (<i>Blatella germanica</i>) Flea (<i>Cimex lectularius</i>) Bug (<i>Xenopsylla cheopsis</i>) Ants (<i>Paratrechina</i> sp.)
	Fly (<i>Musca domestica</i>)



Registered by:

BASF (Malaysia) Sdn. Bhd. (182671-M)

No. 2, Jalan Astaka U8/87, Bukit Jelutong, Seksyen U8,
40150 Shah Alam, Selangor Darul Ehsan, Malaysia.

Tel.: 03-5628 3888 Fax: 03-5628 3777

Fendona® should be applied by a licensed pest controller only.

Always read the product label before use.

This brochure is intended as advice.



Disclaimer: The information submitted in this publication is based on current BASF knowledge and experience. In view of the many factors that may affect its application, this data does not relieve the user from carrying out their own tests. The data does not imply assurance of certain properties or of suitability for a specific purpose. It is the responsibility of the user to ensure that any proprietary rights and existing laws and legislation are observed. © Copyright BASF 2013.
® Registered trademark of BASF.