

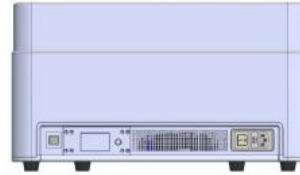
X-RAY CR SCANNER



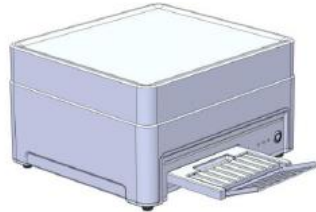
Sold separately



Front



Back



Corner



Side



14x17
Rigid
Cassette



10x12
Rigid
Cassette



14x17
Flexible
Cassette



10x12
Flexible
Cassette

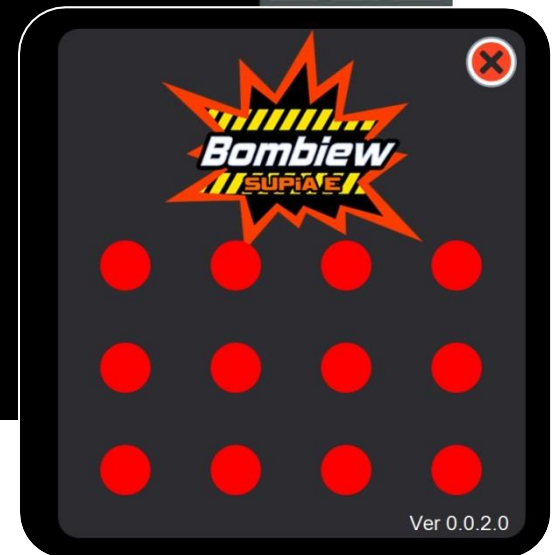
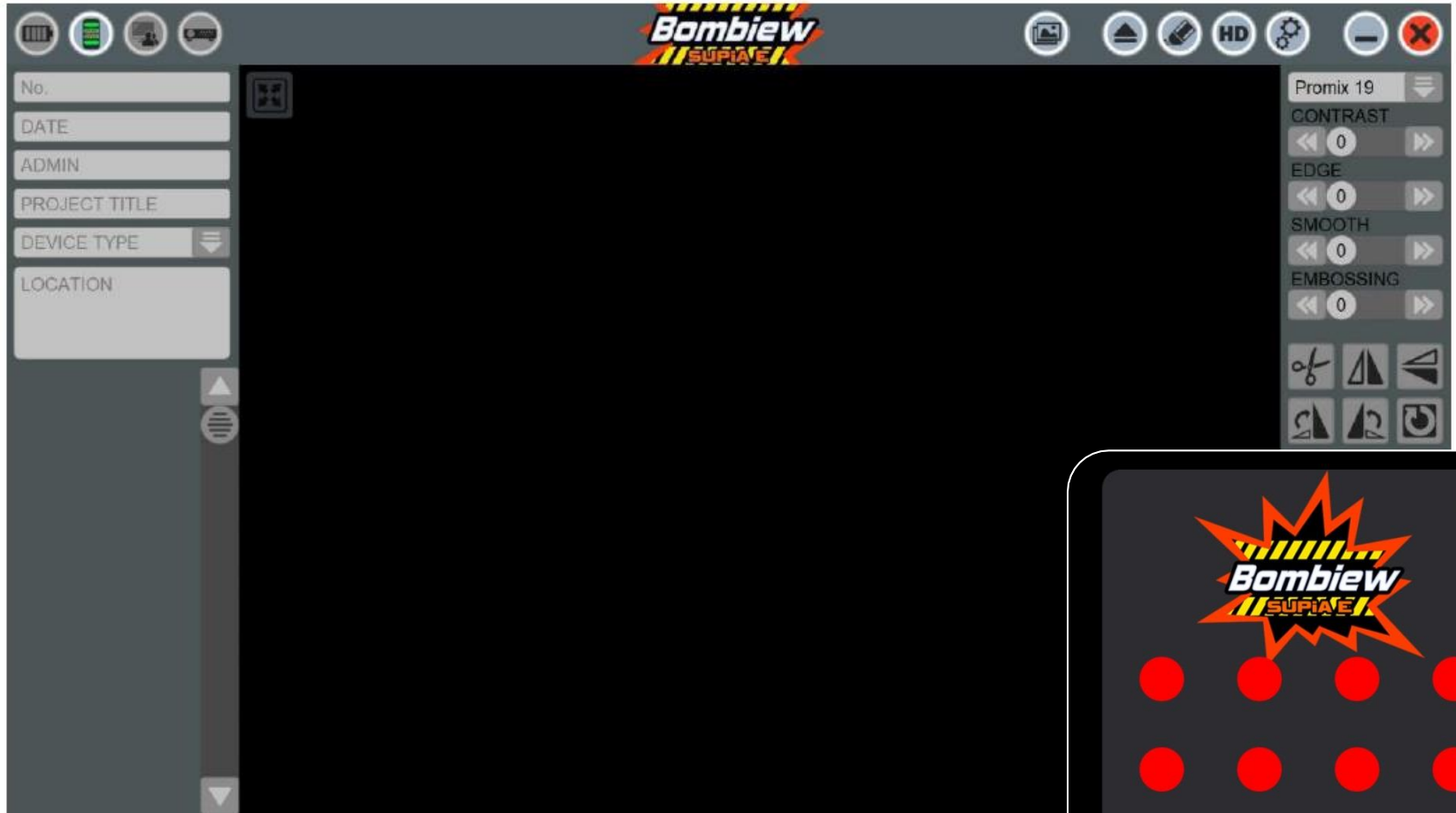


14x17
Image
Plate



10x12
Image
Plate

Interface



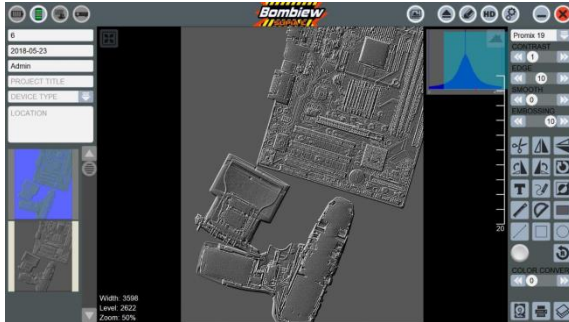
Touch screen based software

Interface

The screenshot displays the SUPiA E interface with the CALIBRATION tab selected. The MONITOR SIZE section is highlighted with a red box. The interface includes several configuration panels:

- OPTION**: ACCOUNT, IMAGE PARAMETER, CALIBRATION
- OUTPUT TYPE**:
 - LANGUAGE: English
 - FONT: Arial TUR
 - DATE TYPE: YYYY-MM-DD
- MONITOR SIZE** (highlighted):
 - MONITOR SIZE AUTO
 - HORIZONTAL SIZE: 294
 - VERTICAL SIZE: 165
- SETTING COMMENT**:
 - COMMENT FONT SIZE: 15
 - COMMENT FONT CO: [empty]
 - VALUE FONT SIZE: 10
 - VALUE FONT COLOR: [empty]
 - VALUE FONT OUTLIN: [black]
 - LINE SIZE: 1.0
 - LINE COLOR: [empty]
- DEVICE TYPE**: [empty] +
- DEFAULT SCREEN**:
 - MAIN SCREEN
 - ALBUM
- ON-SCREEN KEYBOARD**:
 - KEYBOARD AUTO RU
- IMAGE SAVE FOLDER**:
 - C:\Users\Public\CREOD Console\ImageFiles\ [empty] SAVE EXPLC
- NETWORK**:
 - ACCEPT PORT: 210
 - ACCEPT CODE: 12345678
 - ACCEPT ACC
 - OK

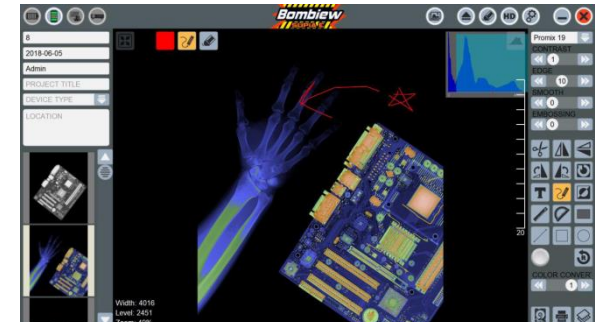
Detailed examples



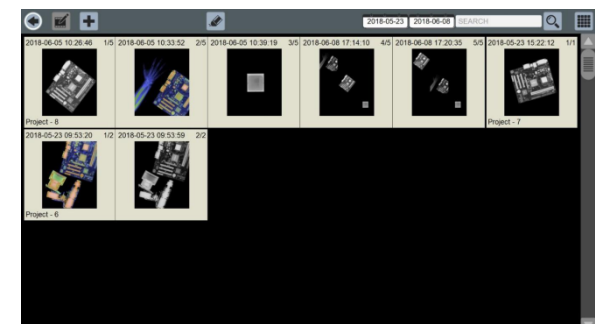
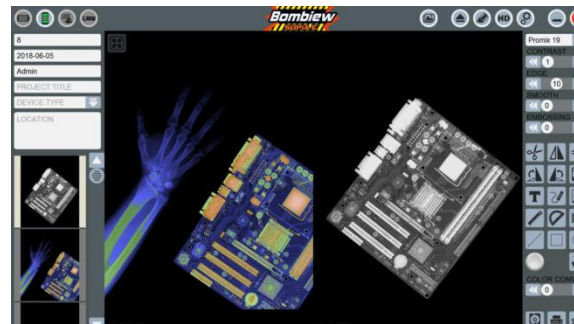
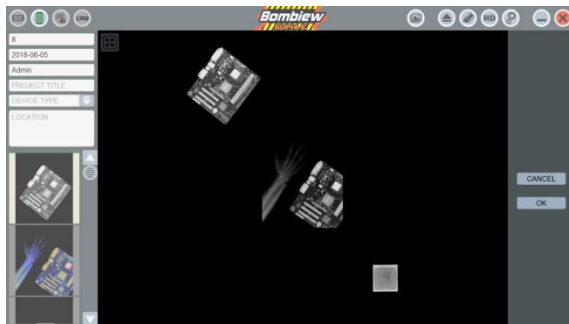
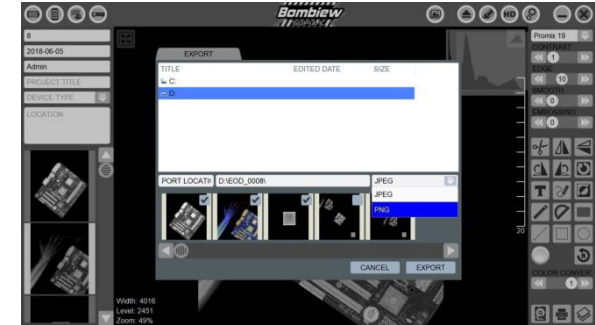
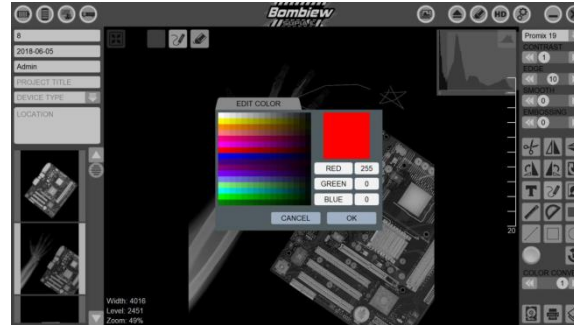
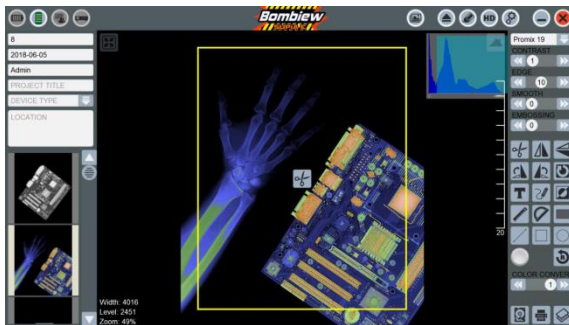
Embossing



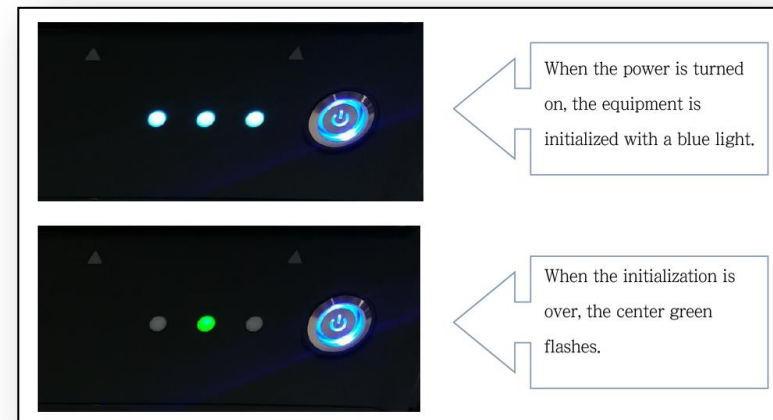
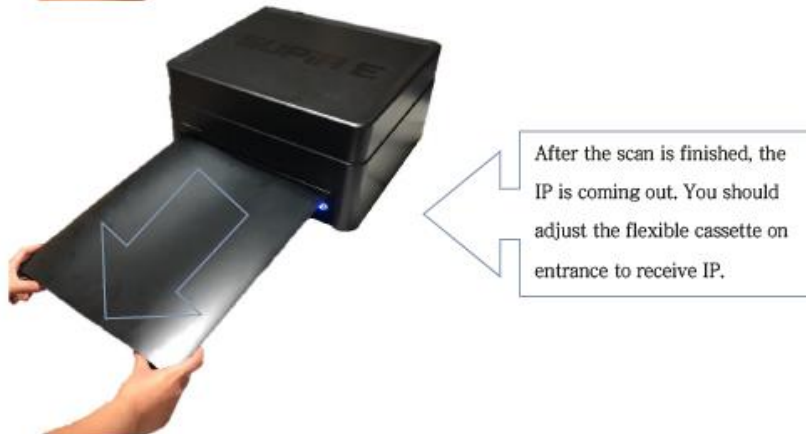
Cutting



Rotation



Operating





Laser Classification	EN 60825-1:2014 (Third Edition) cl.4, cl.5
Size	45 x 40 x 26.1cm
Weight	23kg(배터리 포함)
IP Film size	10×12 inches 14×17 inches
IP Film thickness	1mm
Program	Bombiew(EOD exclusively use program)
Scan speed	<Scan> 10×12 inches : 25 sec. (SD 15 sec.) 14×17 inches : 33sec. (SD 18 sec.) <Erase> 10×12 inches : 15 sec. 14×17 inches: 19 sec.
Power supply	AC110/220 / DC 24V 4000mA(4hours)
Transmission method	USB

