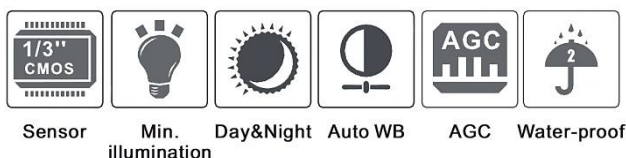


# AHD 2MP 1080P IR Dome Camera



- 1/3" Sony CMOS Sensor
- 4 or 6mm Fixed Lens
- 6pcs High Power IR Leds



Crystal Clear Lens



Full HD Resolution



High Power IR Leds



Lightning Proof



Model	AHD-T200 FD
Image Device	Sony 1/3" CMOS 2.0 Mega Pixel
Video Output	AHD 1920H (ANALOG)
Scanning System	2:1 INTERLACE
Effective Pixels	1920 x 1080
Electronic Shutter	AUTO 1/50 ~ 1/50000
Horizontal	2.0MP
White-balance	Auto white balance (2500°K~9500°K)
Synchronizing System	Internal
Sensitivity	4 LUX IR ON
BLC	Auto
Signal to Noise	More than 48dB AGC off
AGC	Auto
Gamma Correction	0.45
IR Distance	20 Meters
IR LED	6 pcs high power IR LED
IR Status	Under 10 Lux by CDS auto control
IR View Angle	View angle: 70°, Beam spread: 40°/per LED
IR Wavelength	850nm ± 25nm
LED Life	More than 10,000 hours
Lens	4mm Standard
Power Consumption	IR on: 280mA, IR off: 70mA ± 5mA
Power Supply	12VDC 1500mA
Temperature	Operating: -10 to 50°C
Video Output	Composite 1.0 Vp-p at 75 ohm

**High Quality Crystal Clear Lens**  
To provide you with the best picture quality

**Superior Photoresistor**  
Distinguishes between changes in light to provide clear images.

**6 pcs High power infrared LEDs**  
These emitters provide the necessary illumination to ensure high image quality



## Night Vision to keep you safe while you sleep

The latest Sony IMX 323 provides even clearer infrared images, extending out to 20 meters to make sure you are completely secured.

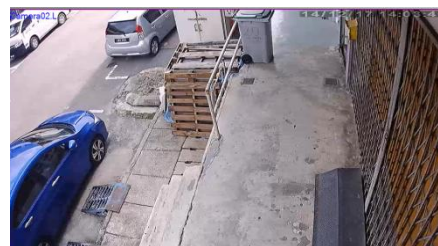


## Full HD 1080p Resolution

Experience the world through our 2 MP lens, giving you crystal clear images.



Day View



Night View