

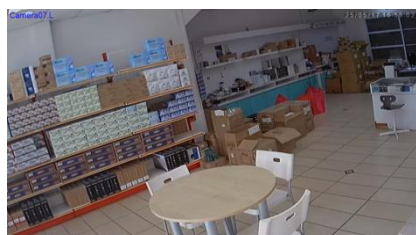
AHD 1.3MP IR Dome Camera



AHD Analog
High Definition



- 1/3" CMOS Sensor
- 4mm Fixed Lens
- 4pcs High Power IR Leds



Day View



Night View

Model	AHD-T130 FDE
Image Device	1/3" CMOS 1.3 Mega Pixel
Video Output	AHD 1280H (ANALOG)
Scanning System	2:1 INTERLACE
Effective Pixels	1280 X 720
Electronic Shutter	AUTO 1/50 ~ 1/50000
Horizontal	1.3MP
White-balance	Auto white balance (2500°K~9500°K)
Synchronizing System	Internal
Sensitivity	4 LUX IR ON
BLC	Auto
Signal to Noise	More than 48dB AGC off
AGC	Auto
Gamma Correction	0.45
IR Distance	20 Meters
IR LED	4 pcs high power IR LED
IR Status	Under 10 Lux by CDS auto control
IR View Angle	View angle: 70°, Beam spread: 40°/per LED
IR Wavelength	850nm ± 25nm
LED Life	More than 10,000 hours
Lens	4mm Standard
Power Consumption	IR on: 280mA, IR off: 70mA ± 5mA
Power Supply	12VDC 1500mA
Temperature	Operating: -10 to 50°C
Video Output	Composite 1.0 Vp-p at 75 ohm