

# Network H.265 1080P 3MP IR CCD Camera

Deeplet  
In Pursuit of Perfection

ONVIF



Full HD  
1080

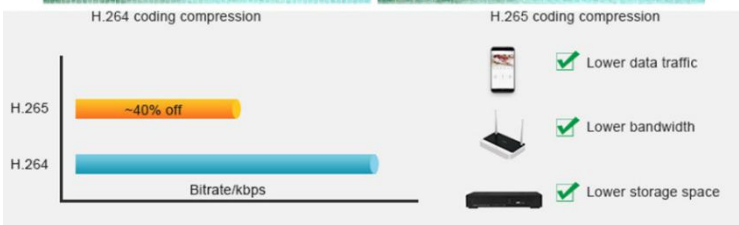
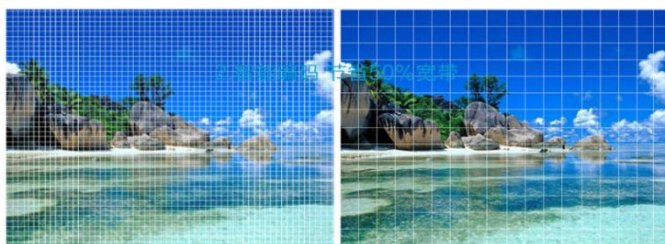


- 1/3" CMOS Sensor
- 3.6mm Fixed Lens
- 42pcs IR Leds
- IR Range: 30 meter
- PoE

## Supports ONVIF, Work with ONVIF NVR

### H.265 Video Compression

Support H.265 or H.264 ip camera input, smart recording save more storage hdd space

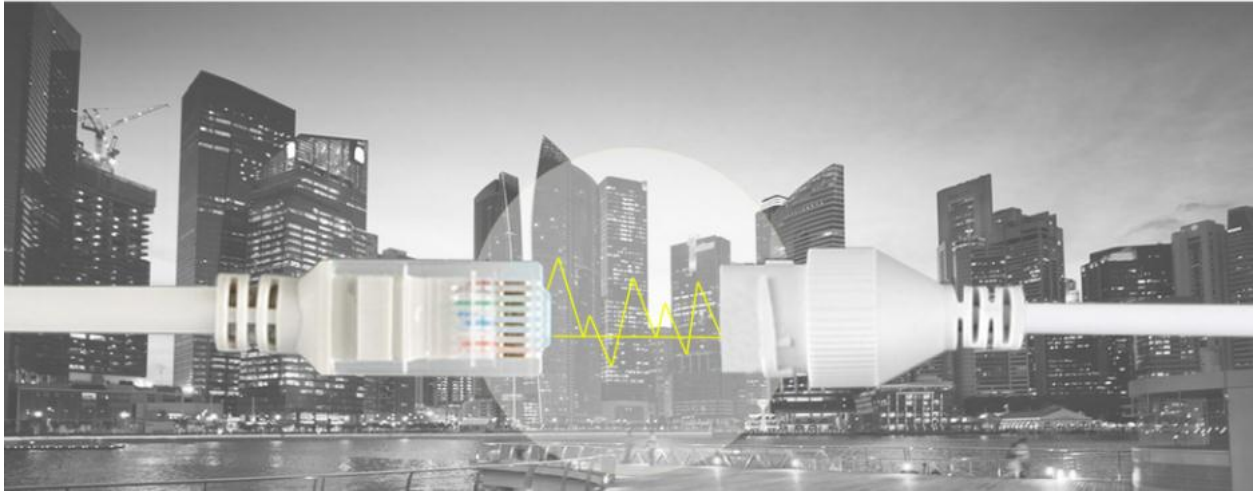


Model	IPC-T300FB
Resolution	3MP 2048(H)×1536(V)
Image Sensor	1/3" Progressive CMOS
Min. Illumination	Color 0.1lux @ F1.2(AGC ON); B/W 0 lux @ IR ON
Shutter	1/5 ~ 1/20000s
Lens	3.6 mm H.FOV: 73°
F No.	F 2.0 ±5%
Day & Night	IR cut filter with auto switch
WDR	Digital WDR
Video Compression	H.265/H.264
Video bit rate	8Kbps ~ 8Mbps
Frame Rate	<b>Mainstream (1-30fps optional)</b> 3MP(2048x1536)(2304x1296),1080P(1920x1080), 960P(1280x960),720P(1280x720) <b>Substream</b> 720P(1280x720),VGA(640x480),QVGA(320x240) <b>Mobilestream</b> VGA(640x480),QVGA(320x240 )
BLC	Support
ROI	Support
Privacy Mask	Support
Video Analytics	Perimeter Intrusion Detection, Line Crossing Detection, Stationary Object Detection, Pedestrian Detection,Face Detection,Cross Counting.
Protocols	TCP/IP, HTTP, DHCP, DNS, DDNS, RTP/RTSP, PPPoE, SMTP, NTP, UPnP, SNMP, HTTPS, FTP,
System Compatibility	ONVIF( Ver 2.6)
Interface	RJ45 10M / 100M Ethernet interface x1
Led	42pcs (DIP)
IR Range	Up to 30m
Power Supply	DC 12V/POE
Consumption	≤7W
Dimension	∅72 X154mm
Storage Temperature	-30 ~ +60°C
Operating Temperature	-30 ~ +55°C



### **PoE—Power over Ethernet**

The PoE (Power over Ethernet) function allows you to get your camera powered via the Ethernet port and transmit video signal at the same time. So no extra power supply is needed when connecting your camera to NVR.



### **IR-CUT FILTER PIECE**

Color Is More Pure During The Day and Night



**IR-CUT**



**Ordinary**