



Arrigo

Web portal

Arrigo is a powerful tool, which functions as a web portal. All documentation, planned operation and maintenance work etc. can be collected in one and the same place and accessed at any time, regardless of where you are.

- Web portal for your buildings
- All documentation collected in one place and always available
- Operation and maintenance tool

- A link to your service partners
- Keeps track of your energy consumption
- Arrigo can always be accessed via the Internet

Arrigo is a universal portal that ties together a property's technical and administrative systems. Virtually all of the data and functions concerning the property are accessible through direct links and search functions.

More rational operation and effective energy consumption

- Planned service measures
- Error reports
- Energy consumption reports
- Time reports
- Automatic connection to different service companies

All information in one place

- Meter readings
- Technical documentation for each building
- Inspection reports
- Energy declarations

We take care of the hosting

- No need for investments or IT personnel
- Increased operation reliability

Integration possibilities

In Arrigo it is possible to create links to internet sites. Through these links it is possible to supervise EXO4 Web Servers as well as Corrigio E web controllers through Arrigo.

Documentation collected in one place

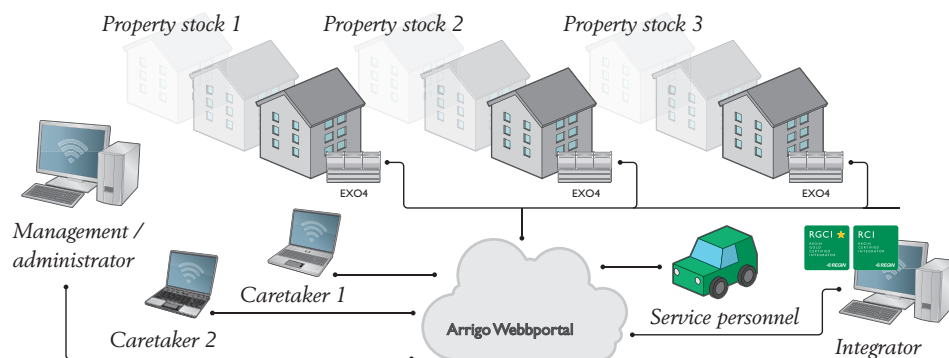
All documents, including technical documentation, can be collected in one place in the Arrigo portal. Via Arrigo, it is also possible to access documentation, inspection reports, energy declarations, etc.

Arrigo is always available

Arrigo is web hosted and can always be accessed. All you need is an Internet connection.

A link to your partners

Arrigo can act as a link between the property owner and partners/service companies. For example, you can place a work order to a service company and receive an acknowledgement when it has been carried out.



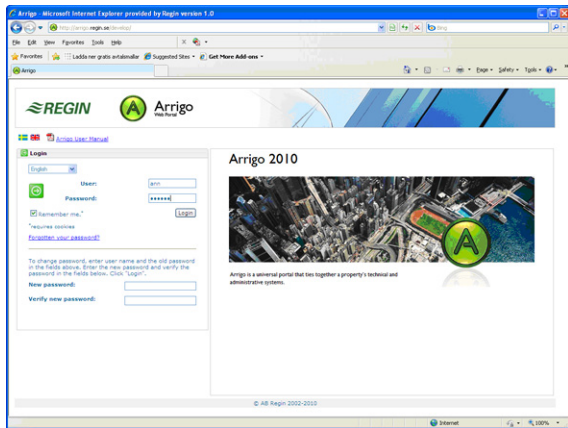
REGIN

THE CHALLENGER IN BUILDING AUTOMATION

To use Arrigo

Logging in

Arrigo does not require installation, it can be used as soon as the registration confirmation has been received. Included in the registration confirmation is a link to your Arrigo Web Portal. The first time you log in, the username and password in the confirmation should be used. Thereafter, the password can be changed if desired. Arrigo is available in a number of languages. On the login page, you choose which language should be used.



In Arrigo, you navigate via a navigation tree and tab systems. The navigation tree can be changed to suit your specific requirements. In the daily use, the tab system is primarily used.

From the first time you log in, you will have access to examples which simplify the start-up process.

Administration

System administration

In the folder System administration in the navigation tree, the system administrator enters basic information, such as areas, types of buildings, types of documents etc.

User

Users which should be able to log in and use Arrigo must be registered in the folder Users. Each user is given specific rights which are relevant to that particular user.

Buildings

In the folder Buildings, all buildings which should be included in Arrigo are added. Thereafter a user is connected to each building in the folder Users.

Product database

All essential products in buildings are added in the product database. These products can be used when objects are created and connected to buildings.

Objects

All objects that need to be used in the buildings are added in Objects. Examples of objects are filters, fans and controllers.

Meters

Meter readings can be registered after the meters are added in Meters.

Tools for the system administrator

InfoCenter

In the folder InfoCenter, the system administrator can send information to all users or users in a special area.

Log page

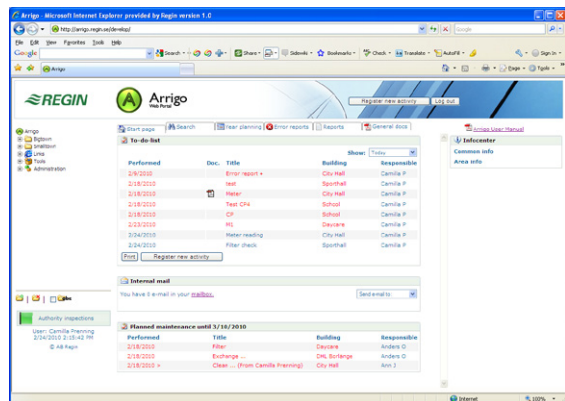
On the log page, it is possible to see for example who has logged in and out, as well as the time and date of the logged activities.

Product report

The product report gives you an overview of which products have been registered in the product database. It is possible to filter on different attributes.

Daily use

Users which have been registered by the system administrator can log in to the Arrigo portal. Depending on which rights have been registered for him/her, different users have access to different information.



The start page

The Start page is shown when you log in to Arrigo. It contains a number of lists:

- The To-do-list: future and overdue activities for which the user is responsible
- Internal mail: received internal letters
- Planned maintenance: activities in progress in the user's area

From the Start page, you can also register and acknowledge activities.

Building information

By clicking on a building in one of the lists on the Start page, you get to the building page.

This page contains all information about the building, including error reports, planned activities and activities that have already been carried out. The building tabs contain notes, documents and year planning for the selected building.

The object tabs

By selecting an object in the navigation tree, the object tabs are displayed. Here, the system administrator can enter information about the object, such as object description, troubleshooting, spare part lists, function descriptions, protocols and history. The information will then be available for users.

Meter information

When a meter is selected in the navigation tree it is possible to add meter reading data and create consumption reports.



Other functions

You can store a considerable amount of information in Arrigo. To quickly find specific information, you can use the Search tab. Using the filters, the search can be limited.

The year planning tab gives you an overview of all the activities during the year. This page can also be printed.

The Reports tab is used to show planned maintenance and error reports to everyone responsible. It is possible to filter on different attributes.

If you click on the button Authority inspections below the navigation tree, the activities that can be inspected according to the configuration in the system are displayed.

Licence sizes

Depending on the number of buildings needed in Arrigo, a suitable licence size is selected.

Licence size	Buildings
Arrigo XS	5
Arrigo S	25
Arrigo M	100
Arrigo L	200
Arrigo XL	500
Arrigo XXL	Unlimited

Technical requirements

To use Arrigo you need a computer with a web browser. Arrigo is optimal for Internet Explorer 7.0 and later versions.

Product documentation

Document	Type
Arrigo user manual	Manual with detailed information about Arrigo

The product documentation is available on Regin's ftp-server. It is intended for our system customers, who need to share files with us, for example at technical support. Contact one of our sales engineers for access via your own password.

Head Office Sweden

Phone: +46 31 720 02 00
Web: www.regin.se
Mail: info@regin.se

Sales Offices

France: +33 1 41 71 00 34
Germany: +49 30 77 99 40
Spain: +34 91 473 27 65
Hong Kong: +852 24 07 02 81
Singapore: +65 67 47 82 33



THE CHALLENGER IN BUILDING AUTOMATION