



**PS is a differential pressure switch for supervising air handling units. It is used, for example to monitor fans, filters or to control defrosting functions.**

- \* For differential pressure up to 5000 Pa.
- \* Lowest setpoint value 20 Pa (PS300X).
- \* Compact format.
- \* Easy to mount.
- \* Excellent long-term stability.
- \* Can be used at temperatures down to - 20° C.

### Function

The pressure that is connected to P1 (high pressure point) is compared with the pressure connected to P2. When the differential pressure exceeds the setpoint value the contact changes. When the pressure switch is used to supervise a fan one of the pressure connections can be left open, atmospheric pressure.

The setpoint value is set using the knob under the lid. The setpoint value is visible through the lid. The hysteresis is preset in the factory before delivery. The lid is secured with a single screw to facilitate mounting and service.

### Models

Type	Pressure range	Hysteresis ( P)
PS300X	20...300 Pa	10 Pa +/- 15 %
PS500X	50...500 Pa	20 Pa +/- 15 %
PS1000X	200...1000 Pa	100 Pa +/- 15 %
PS2500X	500...2500 Pa	150 Pa +/- 15 %
PS5000X	1000...5000 Pa	250 Pa +/- 15 %

## Technical data

Contact data	1 A (0.4 A), 250 V AC, changeover contact.
Hysteresis	See above on models
Cable connection	AMP flatplug with push-on screw terminals
Ambient temperature	-20...+85°C
Storage temperature	-40...+85°C
Maximum differential pressure	10 kPa

Pressure connection	Connection pipes for 6 mm tube.
Material sensor housing	Polystyrene
Material membrane	Silicon
Form of protection	IP54



These products conform with the requirements of European EMC standards 2006/95/EC and carry the CE-mark.

## Accessories

ANS-1	Mounting kit with 2m plastic tube and 2 pressure outlets.
DBZ-14A	Set with mounting bracket and screws (Fig. 1)
DBZ-14B	Set with mounting bracket and screws (Fig. 2)

## Mounting positions

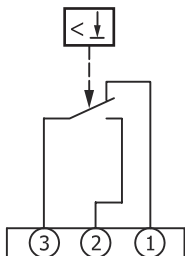
Recommended mounting position:  
vertically (factory calibrated position).



Horizontal position with lid up. The switching point  
will be 20 Pa higher than the setpoint on the scale.



## Dimension and wiring



- 1 Normally closed
- 2 Normally open
- 3 Common

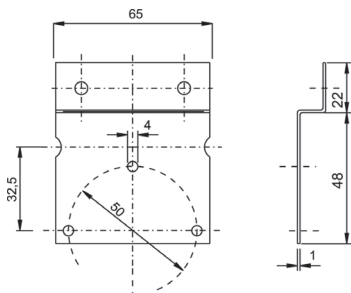


Fig. 1

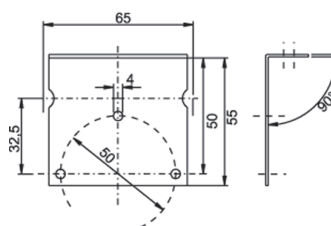
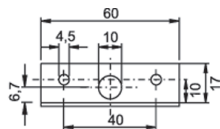
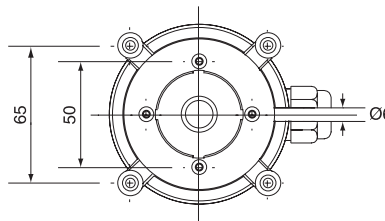
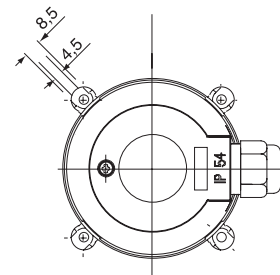
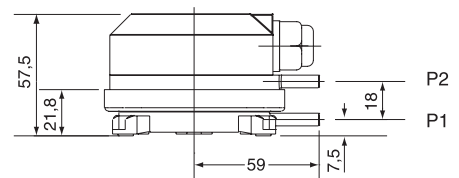


Fig. 2



P1=Connection for the higher pressure  
P2=Connection for the lower pressure

Regin Controls Asia Pacific Pte. Ltd  
66 Tannery Lane #03-04 Sindo Building  
Singapore 347805  
Phone: +65 6747 82 33  
Fax: +65 6747 92 33  
Web: [www.regin.sg.com](http://www.regin.sg.com)

**REGIN**

THE CHALLENGER IN BUILDING AUTOMATION