



- Kv-value 0.63...39
- Size DN15 up to DN50
- Temperature area -5...+185°C

The valve range BTR is used with RVA5 actuators. The valve is intended for cold and hot water, glycol-mixed water or steam. The 3-way valve is intended to be used as a mixing valve.

**Function**

BTR (3-way valve):

Open between port 2 and port 1 when the stem is in its lowest position. (Is in this position closed between ports 3 and 1).

Open between port 3 and port 1 when the stem is in its top position. (Is in this position closed between ports 2 and 1).

See drawing on overleaf.

**Actuators**

The valves are intended to be used with RVA5 actuators (3-point or 0...10 V). See product sheets for RVA5 for detailed information on suitable actuators.

BTR can also be adjusted for use with other actuator brands (contact Regin for more information).

# BTR

## 3-way control valves

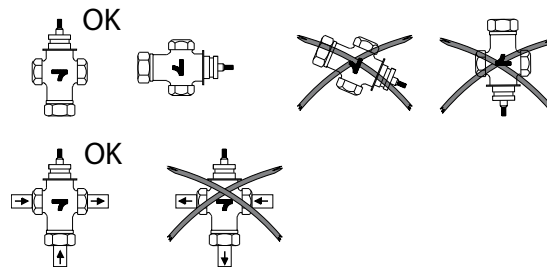
BTR is a range of 3-way control valves. They are used to control hot, cold or glycol-mixed water or steam in heating and ventilation systems.

- Pressure class PN16
- Differential pressure 0.7...1.6 MPa

**Installation**

The valve should be mounted according to the flow directions on the valve.

The 3-way valve is of mixing type and should be mounted in the mixing point.



**Material**

The valves have body and plug in gunmetal and stem in stainless steel. O-ring in Viton in the packing box.

**Control of refrigerants**

The valves can be used with different refrigerants. In this case, a special type of packing box should be mounted. Contact Regin for more information.

## Models

3-way valves		Kv	Max. diff. pressure	Max. actuator force
BTR15-0,63	DN15	0.63	1.6 MPa	800 N
BTR15-1,0	DN15	1.0	1.6 MPa	800 N
BTR15-1,6	DN15	1.6	1.6 MPa	800 N
BTR15-2,1	DN15	2.1	1.6 MPa	800 N
BTR15-2,7	DN15	2.7	1.6 MPa	800 N
BTR20-4,2	DN20	4.2	1.6 MPa	1500 N
BTR20-5,6	DN20	5.6	1.6 MPa	1500 N
BTR25-10	DN25	10	1.6 MPa	1500 N
BTR32-16	DN32	16	1.6 MPa	1500 N
BTR40-27	DN40	27	1.3 MPa	1500 N
BTR50-39	DN50	39	0.7 MPa	1500 N

## Technical data

Pressure class	PN16
Connection	Metric female threaded
Flow characteristics	Equal percentage
Rangeability	50:1
Stroke	20 mm
Media	Hot, cold or glycol-mixed water (max 50%) or steam
Max leakage	0.1 % of kv
Temperature area	-5...+185°C
Thread	The valves have female threaded connections according to ISO 228/1

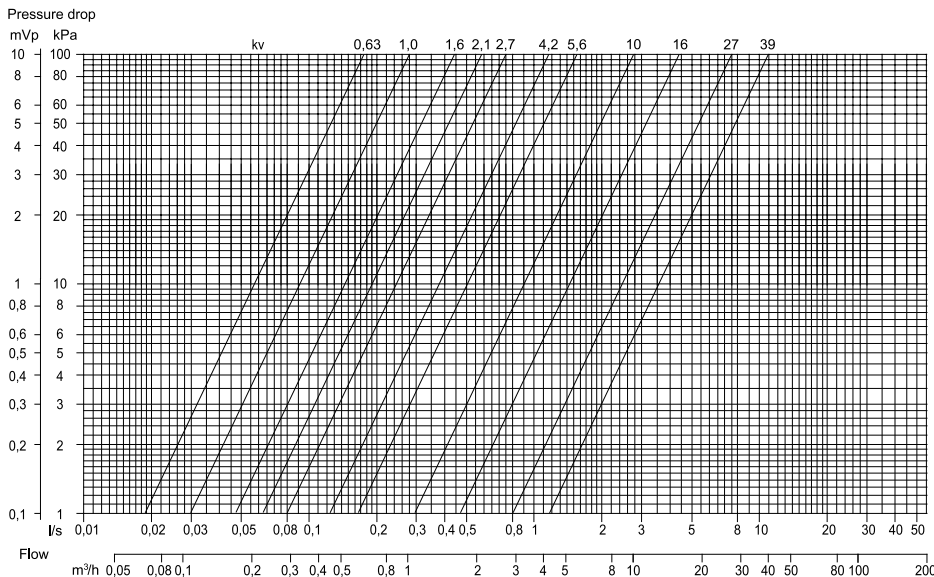
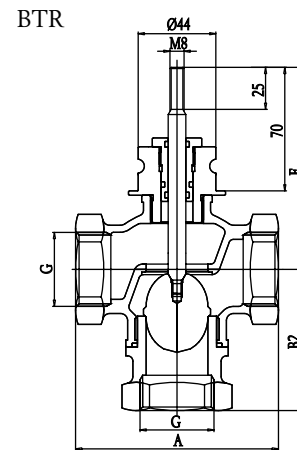
## Material

Body	Rg5 (gun metal SS 5204)
Plug	Rg5 (gun metal SS 5204)
Stem	Stainless steel
Packing box	Self-adjusting Teflon (O-ring Viton)

## Dimensions and pressure drop diagram

Measurements in mm.

BTR	15-0,63	15-1,0	15-1,6	15-2,1	15-2,7	20-4,2	20-5,6	25-10	32-16	40-27	50-39
A	70	70	70	70	70	80	80	90	115	130	160
G	G1/2"	G1/2"	G1/2"	G1/2"	G1/2"	G3/4"	G3/4"	G1"	G1 1/4"	G1 1/2"	G2"
B1	56	56	56	56	56	56	56	56	60	64	70
B2	70	70	70	70	70	70	70	70	80	80	95
E	106	106	106	106	106	106	106	112	115	123	128



**Head Office Sweden**  
 Phone: +46 31 720 02 00  
 Web: [www.regin.se](http://www.regin.se)  
 Mail: [info@regin.se](mailto:info@regin.se)

**Sales Offices**  
 France: +33 14 171 46 46  
 Hong Kong: +852 24 07 02 81  
 Singapore: +65 67 47 82 33  
 Germany: +49 30 77 99 40

**REGIN**

THE CHALLENGER IN BUILDING AUTOMATION