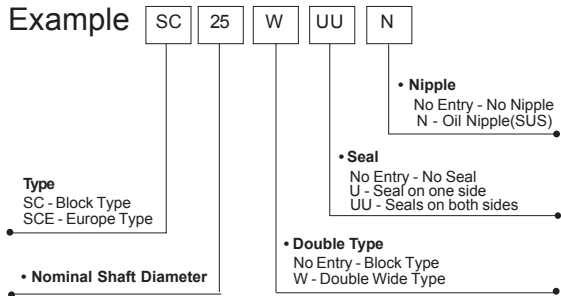


### • Type Number Format

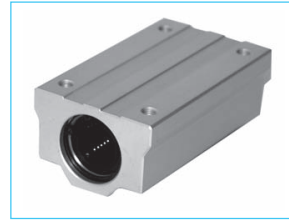


### • Type of Slide Units

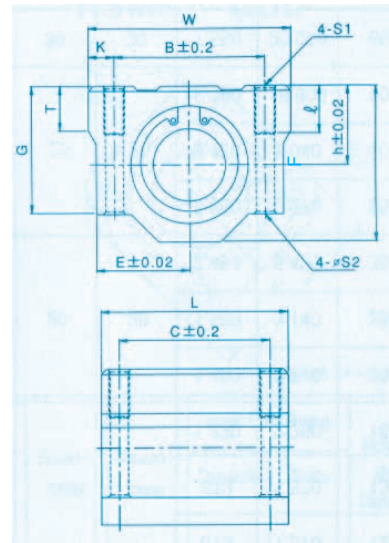
- Block Type  
SC... : Single Type



- SC... W : Double Wide Type



- Block Type  
SCE... : Europe Type



Nominal Shaft Diameter	Unit Number	Main Dimension							Mounting Dimension					Basic load Rating		Weight	
		h	E	W	L	F	G	T	B	C	K	S <sub>1</sub>	S <sub>2</sub>	ℓ	Dynamic		Static
mm	SC...UU	mm	mm	mm	mm	mm	mm	mm	mm	mm	mm	mm	mm	mm	mm	mm	g
10	SC10UU	13	20	40	35	26	21	8	28	21	6	M5	12	4.3	372	549	
12	SC12UU	15	21	42	36	28	24	8	30.5	26	5.75	M5	12	4.3	510	784	
13	SC13UU	15	22	44	39	30	24.5	8	33	26	5.5	M5	4.3	4.3	510	784	120
16	SC16UU	19	25	50	44	38.5	32.5	9	36	34	7	M5	4.3	4.3	774	1,180	200
20	SC20UU	21	27	54	50	41	35	11	40	40	7	M6	5.2	5.2	882	1,370	255
25	SC25UU	26	38	76	67	51.5	42	12	54	50	11	M8	7	7	980	1,570	600
30	SC30UU	30	39	78	72	59.5	49	15	58	58	10	M8	7	7	1,570	2,740	735
35	SC35UU	34	45	90	80	68	54	18	70	60	10	M8	7	7	1,670	3,140	1,100
40	SC40UU	40	51	102	90	78	62	20	80	60	11	M10	8.7	8.7	2,160	4,020	1,590
50	SC50UU	52	61	122	110	102	80	25	100	80	11	M10	8.7	8.7	3,820	7,940	3,340
60	SC60UU	58	66	132	122	114	94	30	108	90	12	M12	10.7	10.7	4,700	10,000	4,270