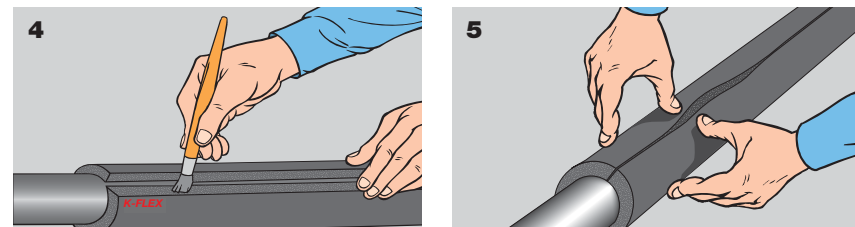


INSTALLATION ► FITTED PIPES



Use only the sharpest knife for cutting - this makes the subsequent glueing far easier. We recommend using the K-FLEX cutter which is ideal for longitudinal cuts.

The use of the cutter is illustrated in these two diagrams. Let the blade run along the tube without the tool's surfaces touching it to get a neat, clean cut.



Position the tube so that the edges are separated, and apply an even layer of K-FLEX K-996 glue.

Once the glue has dried, reseal the tube, pressing the edges firmly together.

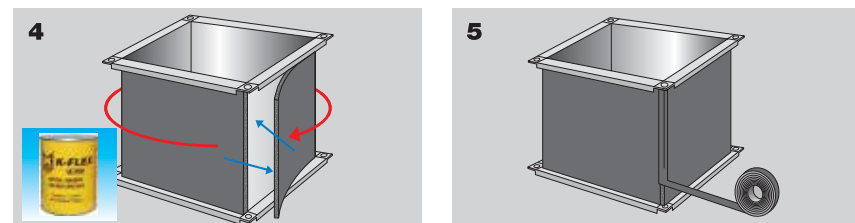
INSTALLATION ► INSULATION DUCTINGS



There are considerable advantages in using K-FLEX EC ROLL SHEET for ducting, which has the same height as the sheeting. Take the measurements of the ducting section to be lagged.

Use thinner to thoroughly clean the surface to be insulated. Insulation is not recommended where there is incrustation or other flaws which could prevent the sheeting from sticking perfectly.

Cut the corresponding portion out of the roll. There is an obvious saving in material by cutting the sheeting along its height (a) rather than along the length of the 1000 mm sheeting (b).



Glue the side of the sheeting to be stuck to the conduit and glue the conduit surface, then apply the sheeting, keeping it taut at the corners.

Cover the corner where the edges join with adhesive insulating tape. Compared to a similar operation carried out with 1000 mm sheeting, as well as the saving in material, there has only been one cut in the application.

PROJECT ► MALAYSIA

Hospital UKM
Bukit Jalil Stadium
Casa Green
MEASAT Building
H20 - Ara Damansara
IMU Hospital
Hospital Uniza
Columbia Asia Hospital - Klang
Pioneer Haevn @ Jalil City
8 Conlay
Setia City Residences
Verde Suite @ Ara Damansara
PJ Midtown
Skyluxe @ Jalil City
YTL HQ @ Bukit Bintang

PROJECT ► INDONESIA

Akmani Hotel, Legian - Bali
All Season Hotel - Nusa Dua, Bali
Pullman Hotel, Central Park - Jakarta
Cavington Hotel - Jogja
Novotel Hotel - Tangerang
Sol Marina Hotel - Serpong
Mercure Hotel - Surabaya
Pakubuwono The View Apartment - Jakarta
Coca-Cola Factory - Surabaya
Australia Embassy Office - Jakarta
Istana Presiden Bogor
The East Office - Jakarta
Wisma Soho Office - Jakarta
The Peak Apartment - Jakarta
XXL Cinema All Outlet - Indonesia

PROJECT ► CAMBODIA

Cho Ray Phnom Penh Hospital
Almond Hotel
Olypia City
Calmette Hospital
City Tower
The Bridge Showroom
Toyoko Inn Hotel
Thai Villiage Restaurant
Cazameridian Twin Tower
Era Phnom Penh Hotel
Era Siem Reap Hotel
Tela Gase Station Head Office
Mazda Showroom
Marriott Hotel
The Parkland

ACCESSORIES

SELF ADHESIVE FOAM TAPES



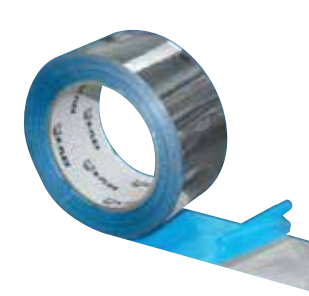
PIPE SUPPORT



K 996 GLUE



ALUMINIUM TAPE



K-FLEX EC_VI_0220

PROJECT ► THAILAND

Mahanakhon Tower
Marriott Surawong
Palladium Hotel
Maya Chiangmai
Central Embassy Chiangmai
Promenada Chiangmai
Four Wing Grand Hotel
Dusit Hotel
Four Point Hotel
Best Western Hotel
Holiday Inn Hotel
Vana Belle Hotel
Paradise Park
The Nine Community Mall
The Walk

PROJECT ► SINGAPORE

Changi Water Reclamation Plant
Marina Band Sands
Norvatis Plant @ Tuas
Glory
Rio Casa Condominium
Mayflower Primary School
Biopolis Centre
NUS Laboratory
UMCi @ Pasir Ris
Sony A&A
40 Gul Circle
St Joseph Institution International School
Crystal Plant @ Jurong Island
Singapore General Hospital
Sime Darby Centre

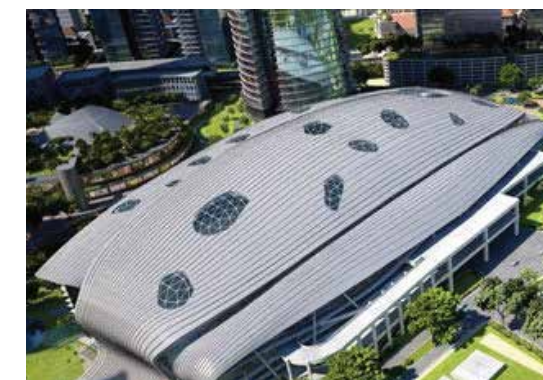
PROJECT ► PHILIPPINES

Filinvest Plaza E
BPO-Araneta
Winford Hotel
Citadine
Northgate DCS
Circuit BPO
Texas Instruments
Novotel Aqua
World Commerce Place
Palawan International Airport
Robinson's Naga
National Musuem - Philippines
81 Newport
Studio A
Batasan Congress



PROJECT ► VIETNAM

First Solar Factory
Nipro
DenEast Milk
Pepsico Suntry Factory
Cai Lan International Container Terminal
Intel
Olympus
Marigot Vietnam
Lotte Centre Ha Noi
Hyatt Regency Apartment
Hue Hospital
Intercontinental Resort and Spa
Bitexco Financial Center
Hilton Saigon Hotel
JW Marriott



K-FLEX EC

K-FLEX EC (Bomba Class 0)

Elastomeric Closed Cell Insulation Thermal & Acoustic Insulation For HVAC/R



