

NH fuse switch-disconnector size 00, 160 A, bus-mounting, connection top/bottom (33 198)



Description

Article

Part No.: 33 198

QUADRON® 60Classic

NH fuse switch-disconnector size 00, 160 A, bus-mounting, connection top/bottom

box terminal

with CrossLink®-Technology

for busbars 12, 15, 20, 25, 30 x 5, 10 and section busbars

System

60Classic

Product group 09

Subgroup 24

pack size 1

EAN 4021267331986

Advantages of the product

CrossLink® adapter technology

Fast and safe conversion of the connection for top or bottom; the parts under voltage remain shock protected

Simple and safe clicking into place and making contact

Safe connection through shock protection split into two

Busbar supports for flat busbars can be mounted above each other

Catalog page 2015 : 2/23, 2/29

eCl@ss 6.1 27142108

eCl@ss 7.1 27142108

ETIM 4.0 EC001040

ETIM 5.0 EC001040

Approvals

Standards

IEC 60947-1:2007 + A1:2010 + A2:2014

IEC 60947-3:2008 + A1:2012

Approvals

IEC (CB), UL, Germanischer Lloyd, VDE, CCC



for UL feeder circuits >250V

Type number: QCB-NH00

UL file: E230163, UL category (for USA): IZLT2 <http://www.ul.com>

CCC certificate: 2010010302403934

Product data

Electrical data

Rated current (IEC): 160 A

Rated voltage (IEC) AC: 690 V

Rated voltage (IEC) DC: 440 V

Rated current (UL): 160 A
Rated voltage (UL) AC: 600 V

Utilisation category AC-21B (690V)
AC (IEC 60947-3) : AC-22B (500V)
AC-20B (1000V) at pollution degree 2

visible information required if used at more than 690V AC: do not switch under load

Utilisation category DC specifications: 2 current paths (L1,L3) in series
DC (IEC 60947-3) : DC-21B (220V)
DC-21B (440V/100A)
DC-22B (220V/63A)
DC-20B (1000V) at pollution degree 2

visible information required if used at more than 440V DC: do not switch under load

Power dissipation:

The power dissipation at a typical load of 80% of the rated current results to 11.3 W.
(The power dissipation for operation with rated current would be 17.7 W.)

rated isolation voltage U_i (AC): 800
V

Rated surge voltage U_{imp} : 6 kV

max. permitted voltage (IEC) AC: 800
V

max. permitted voltage (IEC) DC: 800
V

cond. rated short-circuit current with fuses: 50 kA / 690V

approved with fuse links of characteristics: gG

SCCR: 100 kA

for fuse links IEC 60269-2 / DIN VDE 0636-2 size 00 up to 12W power dissipation

Special operating conditions corresponding to IEC / EN 61439-1 may yield to faulty activations of pilot switches and fuse monitors. The operating conditions have to be considered for the analysis of status signals.

In accordance with the specified AC and DC switching properties and in consideration of the overload conditions, certain distances to earthed metal parts are to be adhered to. detailed information upon inquiry

When several devices are used side-by-side in continuous operation, the rated load factor specified in IEC / EN 61439-1, Table 1, must be observed.

System component: degree of protection IP30 at front as per DIN EN 60529, degree of protection near terminal depends on installation

adapter module: front side degree of protection IP20 as per DIN EN 60529 (finger-safe)

Mechanical data

W x H x D: 106 x 200 x 97

Weight: 100 kg/100

Poles: 3-pole

for busbars: 12, 15, 20, 25, 30 x 5, 10 and section busbars

front degree of protection: IP30

Busbar connector: externally tensioned contacting, convenient click mechanism, simple conversion of the combination bases from 5 to 10mm-thick busbars

Terminal points

Box terminal:

1,5 -70mm² flexible cables, directly or with wire-end ferrules*, depending on contour of the insulated lead 95mm² could be connectable

1,5 -10mm² solid round

16 -70mm² stranded round

2x10mm², 2x16mm² and 2x25mm² flexible with wire-end ferrules, identical cables placed side by side, crimping square

2x 10-35mm² flexible identical cables placed side by side

1a. Cu. 9-13 mm wide

Terminal space 13mm x 13mm

(*flexible cables of maximum cross-section may not fit when using wire-end ferrule)

für Anwendungen nach UL :

nur Cu-Leitungen stranded/solid nach UL 486E

AWG 12 - AWG 2/0

Md 5,0 - 6,0 Nm / 44 - 53 lb.in.

Material properties

Main body:	temperature stability 125°C, self-extinguishing in acc. to UL 94, creepage resistance CTI 600, halogen-free
Shock protection cover:	temperature stability 125°C, self-extinguishing in acc. to UL 94, creepage resistance CTI 200
Handle:	temperature stability 125°C, self-extinguishing in acc. to UL 94, creepage resistance CTI 200
Adapter plate:	temperature stability 125°C, self-extinguishing in acc. to UL 94, creepage resistance CTI 600, halogen-free
Contacts:	spring-loaded copper contacts, silver plated

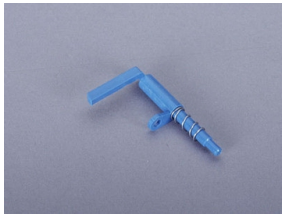
Version

Variant with M8 connection screws 33 398

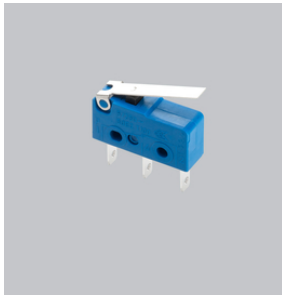
Variant with electronic fuse monitoring 33 324

Variant with electromechanical fuse monitoring 33 206

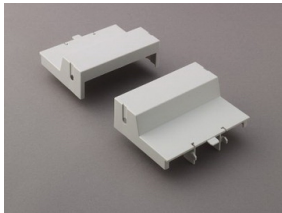
Accessories



03 849
lid interlock
for sealing wire
Size 00



33 156
pilot switch
changeover 250 V AC / 5 A; 30 V DC / 4 A



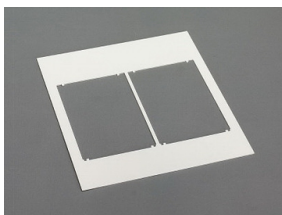
33 315
trim cover, 2 parts
for NH-LTS size 00
size 00



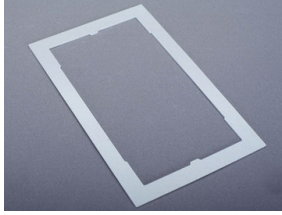
33 317
trim strip
for NH-LTS size 00
size 00



33 915
connection for auxiliary line, for box terminal
flat connector DIN EN 61210 6,3x0,8
NH 00



78 105
Trim frame, double
232 x 210, not for 33221, 33222
size 00



78 893

Trim frame, single

130 x 210, not for 33221, 33222

size 00



79 811

cover for cable lugs, attachable top/bottom

for 33 200, 33 208, 33 329, 33 394, 33 398, 33 420

NH 00