

READY COLOURS

5900 HAMMERTONE FINISH

HIGH GLOSS QUICK DRY
INDUSTRIAL ENAMELS

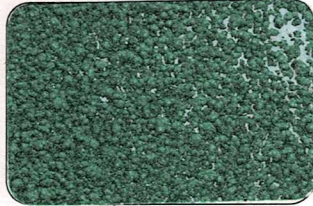
Also Available

900 HAMMERTONE FINISH

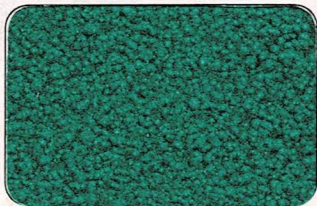
HIGH GLOSS QUICK DRY AEROSOL
INDUSTRIAL COATING



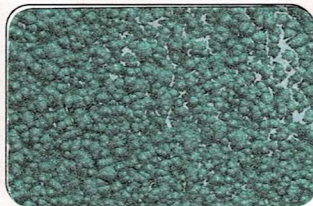
5913 Bronze



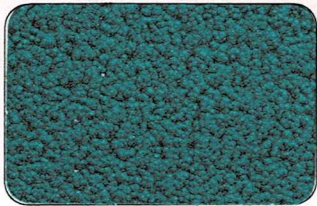
5936 Pale Green



5937 Emerald



5940 Blue Pacific



5941 Sapphire Blue



5977 Silver



5984 Silver Grey



5985 Black

DIRECTIONS FOR USE

Apply Seamaster Hammertone Enamel by spraying. Surfaces to be sprayed must be dry and free from oil, grease, wax and all foreign matter. Mix contents thoroughly before use. For best hammer results thinning should be done with Seamaster Thinner 370, using three (3) parts of enamel to not more than one (1) part of thinner. Avoid excessive thinning.

Caution : Keep away from open flame & provide adequate ventilation.

ATURAN MENGGUNAKANNYA

Muka penampang yang hendak di sembur mestilah bersih kering tidak berminyak dan tidak berkarat. Seamaster Hammertone Enamel hendaklah di kacau betul-betul dengan rata sebelum memakainya.

Sebaiknya, Campurkan tiga (3) bahagian Seamaster Hammertone Enamel dengan tidak lebih satu (1) bahagian Seamaster Thinner 370.

Perhatian : Simpankan ditempat yang cukup berangin dan jauhkan daripada bahan api.

用法說明

海馬標錘紋磁漆是使用噴射法，用前先將漆攪均勻，噴射處不可以有油類、水腊等。

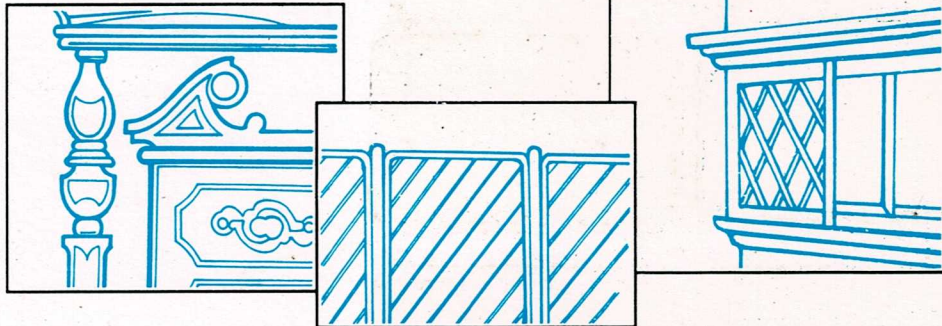
爲了使之達到更好的效果必須以 Seamaster Thinner 370 混和之。將三分的漆混和不超過一份的 Thinner 370 使用之。

注意：請噴射時要有空氣流通之處，勿接近火熱。

seamaster



HAMMER - TONE FINISH



MANUFACTURED BY:

- **STAR CHEMICAL MANUFACTURERS (PTE) LTD.**
JURONG TOWN - SINGAPORE
- **SEAMASTER PAINT (MANUFACTURING) SDN. BHD.**
JOHOR BAHRU - MALAYSIA
- **TIONG SENG PAINT PRODUCTS (TAIWAN) LTD.**
TAICHUNG - TAIWAN

MARKETING:

- **SEAMASTER PAINT MARKETING SDN. BHD.**
JOHOR BAHRU - MALAYSIA
 - **TIONG SENG PAINT PTE. LTD.**
SINGAPORE
-