

# BONDSEAL COAT - MS 100

## MS POLYMER WATERPROOF COATING

### TECHNOLOGY

**BondSeal Coat - MS 100** is an advanced MS polymer waterproof coating designed to provide excellent protection against water ingress and environmental elements. This innovative solution is ideal for a variety of surfaces, offering a seamless and durable barrier that adheres to a multitude of substrates, including concrete, metal, and wood. Its unique formulation ensures long-lasting performance by maintaining flexibility and strength, even under fluctuating temperatures and conditions.

### APPLICATION

**BondSeal Coat - MS 100** is easy to apply and eco-friendly, making it a preferred choice for both residential and commercial applications. Whether you're safeguarding a rooftop, basement, or exterior facade, this MS polymer coating ensures superior lasting waterproofing.



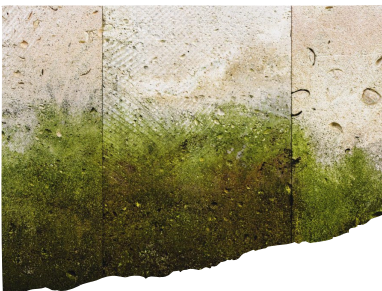
**SEAL CRACK & JOINT**



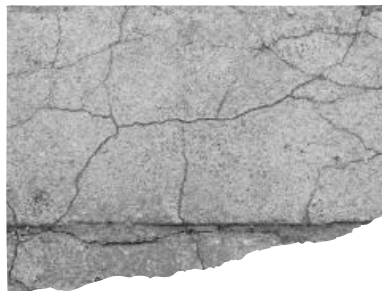
**RE-COATING (OLD & NEW)  
WATERPROOFING**



**RECTIFYING ROOF TILES**



**WALL COATING WATERPROOFING  
(FUNGUS/SEEPAGE)**



**SPIDER CRACK/  
CEMENT TEXTURE**



**METAL, PLYWOOD,  
ROOFTILES**

Note: The above information is for general guidance only. It does not constitute as an offer of warranty by the manufacturer.

## SOLUTION

**BondSeal Coat - MS100** is a polymer-based hybrid technology that offers superior waterproofing performance, especially in extreme weather conditions. Formulated with modified silane, it combines the best properties for long-lasting protection—delivering excellent adhesion, elasticity, and weather resistance.

### ADVANTAGES

- ▶ Non-staining & safe on surfaces
- ▶ Excellent adhesion - on various surfaces
- ▶ No primer needed
- ▶ Cover crack, joint and cement texture
- ▶ Big coverage (thin layer)
- ▶ Prevent peeling - High elasticity / withstand surface tension & joint crack
- ▶ Easy maintenance - Weather resistance (moisture curing & non-staining)
- ▶ Hybrid technology - longer lifespan on extreme weather

### BENEFITS USE FOR

- Prevents water leakage & seepage
- Bonds well to most surfaces
- Easy to apply, wall & floor (ready to use)
- Fast curing with low odor
- Long-lasting flexibility
- Resistant to UV & weather
- Safe for indoor & outdoor use
- Eco-friendly & low VOC
- Can be applied using roller, brush or steel trowel
- Allow foot traffic

### DATA PARAMETERS | SPECIFICATION

Coverage (1kg/1sf/1 layer)	500ml ≤ 3m <sup>2</sup>
Pot Life	Ready to use
Shelf Life	9 month
Bulk density (g/cm <sup>3</sup> )	1 : 21
Packaging	2kg, 5kg & 15kg

### APPLICATION PROCEDURE

- 1) Remove or make sure surfaces all free from loose/friable material like mud, dust, oil etc.
- 2) Use a standard roller size suitable for the application. Apply **BondSeal Coat** onto the surface for smooth and efficient coverage. It can also be applied using a steel trowel as a finishing coat.
- 3) **BondSeal Coat** can be recoated after first layer are totally dry to achieve thickness require or purpose.
- 4) Allow to dry for 24 hour and clean the tools with water.
- 5) For crack sealing, patch or pour **BondSeal Coat** onto the affected area before recoating.

### PRECAUTIONS

- Do not mix any material into **BondSeal Coat** or water.
- Cover up after use to prevent drying compound.

### DEFINITION

**Bond** - To promote strong bonding, adhere materials effectively, and prevent peeling.

**SEAL** - Seal and patch crack in 1 material. To close or block gaps to prevent water, air, or contaminants from passing through.

**COAT** - To cover a surface on wall & floor as finishing coating with a protective layer onto old and new substrate to provide waterproofing and anti better finishing texture.

Note: The above information is for general guidance only. It does not constitute as an offer of warranty by the manufacturer.