

PEACOCK INDUSTRIES SDN BHD

No.12 & 12A, JALAN ANGGERIK MOKARA E31/E, KOTA KEMUNING SEKSYEN 31, 40706 SHAH ALAM, SELANGOR DARUL EHSAN, MALAYSIA.

Tel: (603) 5124 7726, 5124 7727 Fax: (603) 5122 4628 email: sales@peacockspg.com

Name: SPG-1003B Computer Servo Type Universal Testing Machine



Equipment summary:

The machine is designed by mechanical-electrical integration, composition of the force-measuring sensor, transmitter, microprocessor, mechanism of load drive, computer and color inkjet printer. High-precision electronic motor can be set to five-speed, the components are connected by plug-way, Floor-standing models, it is taken account of modern industrial design and ergonomics in modeling and coating

It can be tested all the materials in stretch, compression, bending, shear, embedded relay, peeling, tearing, crack, etc, such as rubber, plastics, leather, metal, nylon wire, fabric, paper, aerospace, packaging, construction, petrochemical, electrical, vehicle, etc.

The implementation of standards and standard configuration:

1. GB/T4689.20-1996 measuring fastness of leather's adhesion
2. QB/T2710-2005 measuring leather's expansion and the rate of elongation
3. QB/T2711-2005 measuring tear force of leather
4. QB/T2712-2005 measuring leather's strength and stretch of spherical crack test

Specifications

1. Computer Servo Type Universal Testing Machine

- A. High-precision sensor 1ton from U.S.A. Accurate Forces within $\pm 0.5\%$.
- B. High-precision 24 bits A / D, sampling frequency 200Hz
- C. Power System: Panasonic AC Servo Motor + Driver + CAVEX + precision ball screw

- D. Control System: it is more precise using Pulse Command control modem, the range in speed control is 0.01 ~ 250 mm / min. the board of iron can be adjust to fast and slow by the control board. it is automatically saved after testing .
- E. Data transmission: RS232 Transfer
- F. Display: windows XP test software.
- G. easy to control five speed and calibration system.
- H. test software can precision control in position, speed, rate of load force and rate of stress, satisfy the different requirements of test.
- I. Test space: Testing width is about 400 mm (standard), moving space of active iron 1000mm (excluding fixtures)
- J. displacement: coder 2500 P / R, increase four-time accuracy. adopt Japanese Lejing coder that has strong anti-jamming capability, displacement resolution 0.001mm.
Small deformation: Metal extensometers, parsing 0.001mm.
- K. Safe equipment : the system would shut down if overload or over-trip

2. software description about Computer Servo Type Universal Testing Machine

- A. function of standard modular: provide users with the necessary applications to the test, covering GB, ASTM, DIN, JIS, BS ... and other test standard specification.
- B. being test product information: provide users with the data to set about the product, one time to input and re-use permanently . for improving the accuracy, the data can be corrected by the formula automatically.
- C. Dual-Report Editor: provide user with the reported format that user choose (testing program add EXCEL reported format, Extend the previous single pattern of statements)
- D. length unit, force unit and showing the data can exchange, force unit T, Kg, N, KN, g, lb, unit of length mm, cm, inch.
- E. auto-optimization of graphic scale, display the best measurement of graphics. It can test the exchange in graphics. It has the load - displacement, load - time, displacement - time, stress - strain load -2 points extending maps, and lots of graph compared.
- F. Test results can be output in EXCEL format.
- G. the result of test can be automatically preserved or manual preserved, test can automatically calculate the most strength, up and down yield strength, loop method, best method, proportional extended strength, tensile strength, compressive strength, tensile strength at any point, constant load extension, elastic modulus, rate of elongation, peel range of maximum, minimum, average, force, total energy, bending modulus, x% load in break displacement, load X% in break displacement, and so on . the test data can be stored in any disk.
- H. Software has a capability that can output the before data.

3. The accessories about Computer Servo Type Universal Testing Machine

- A. warranted book within one-year and operating instructions.
- B. a group of fixture
- C. testing software for tensile machine.
- D. a set of brand computer, color printer

4. items can be tested in the Computer Servo Type Universal Testing Machine

Common items: (display data and calculation)

- tensile stress
- tensile strength
- tensile strength
- rate of elongation at break

- fixed stress
- stress strength
- the value of force at any point
- pull-out strength
- rate of stress at break
- tear strength
- rate of elongation at any point
- force of adhesion and value of peak

5. main Technical parameters about Computer Servo Type Universal Testing Machine

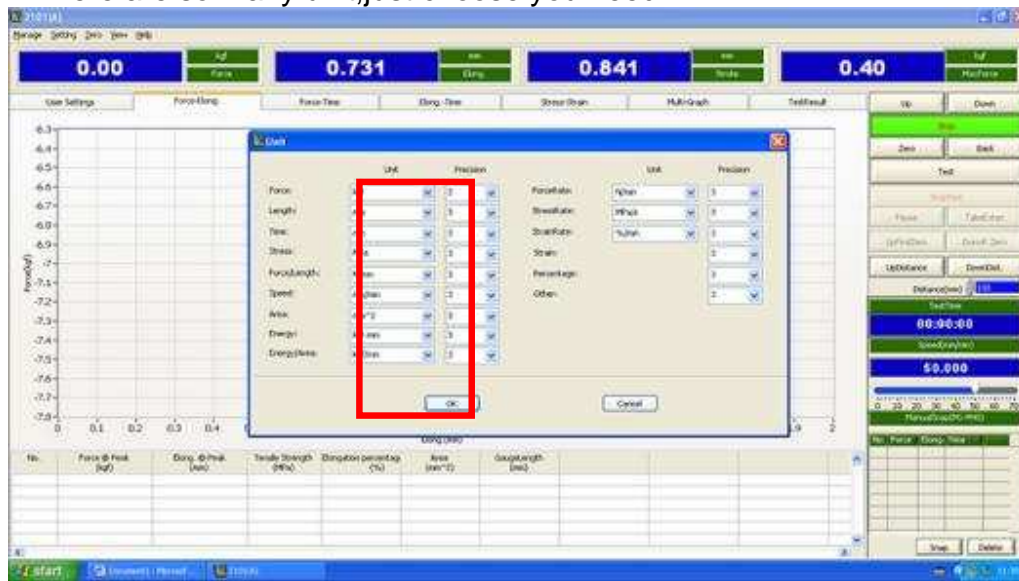
load cell	5KN or 1ton and 2 ton option
resolution of force	1/200000
accuracy of force	$\leq 0.5\%$
Power magnification	7 automatic switching
displacement resolution	1/1000
accuracy of displacement	$\leq 0.5\%$
resolution of extensometer	1/1000
accuracy of extensometer	$\leq 0.5\%$
Range of speed	0.01—500mm/min or 1000mm/min (according to the needs of customer)
Effective Tensile stroke	800mm;1000mm;1200mm, (can be increased the height according to customer's requirement)
testing width	380mm (can be increased the width)
power supply	220V
power	about 2KW (depending on different demand of force, using different motor)
machine size	about 80x55x220cm(length xwidthxheight)
machine weight	About250 kg
Units	Kg,N,LB, TON can be exchanged.

6.Computer servo control material testing machine software operation interface

1.Choose you need units,setting==>unit



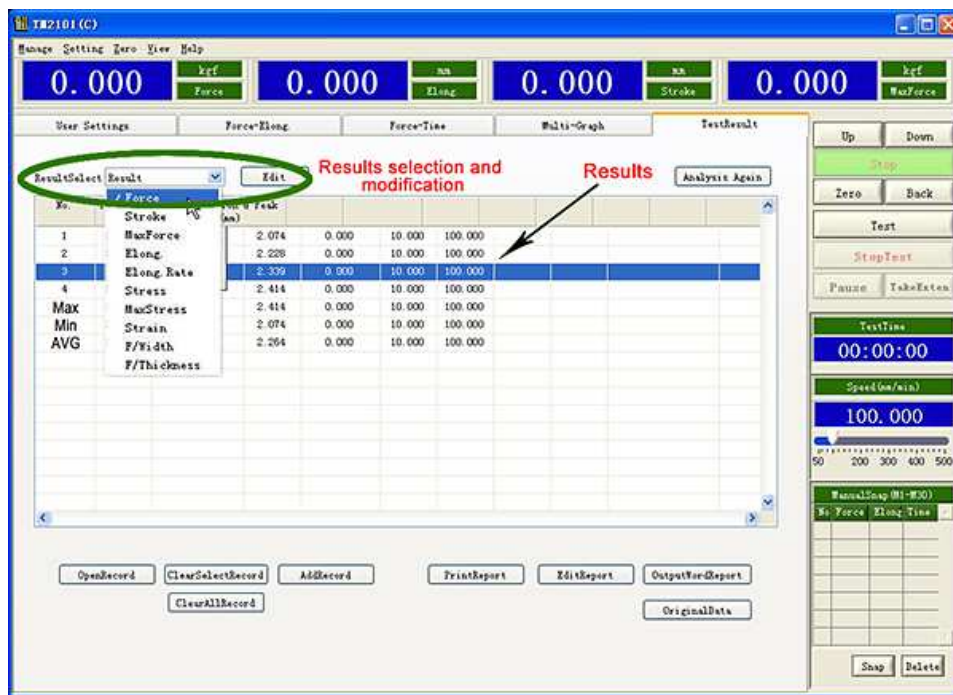
2. There are so many unit, just choose you need.



3. Connect computer and software online. Setting==>Online==>COM1 or COM2..., after it show success connect



5. Test results



7. Computer servo control material testing machine test curve





C Shape Fixture



Large C-clamp



Large C-clamp

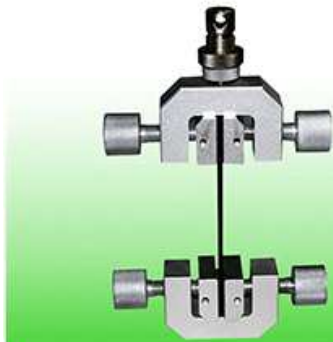


Plate Fixture



3 point bending device



Packaged with special fixtures



Rubber Tensile Fixture



Jaw tension clamp



Universal tensile fixture



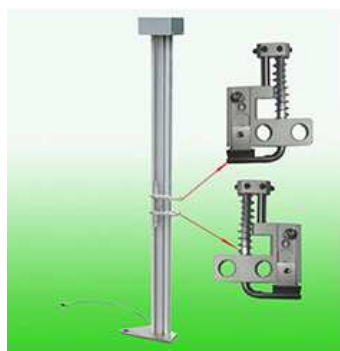
Locking Pincer clamp



90 Degree Peel fixture



Eccentric clamp



Extensometer



Metal Extensometer



Dumbbell Cutter



Seat belts fixture (braid)



Fixture(E shape)



Tensile fixture (20T,30T)



Servo motor+Driver



Sensor O type



Sensor S type