

VG818 User Guide

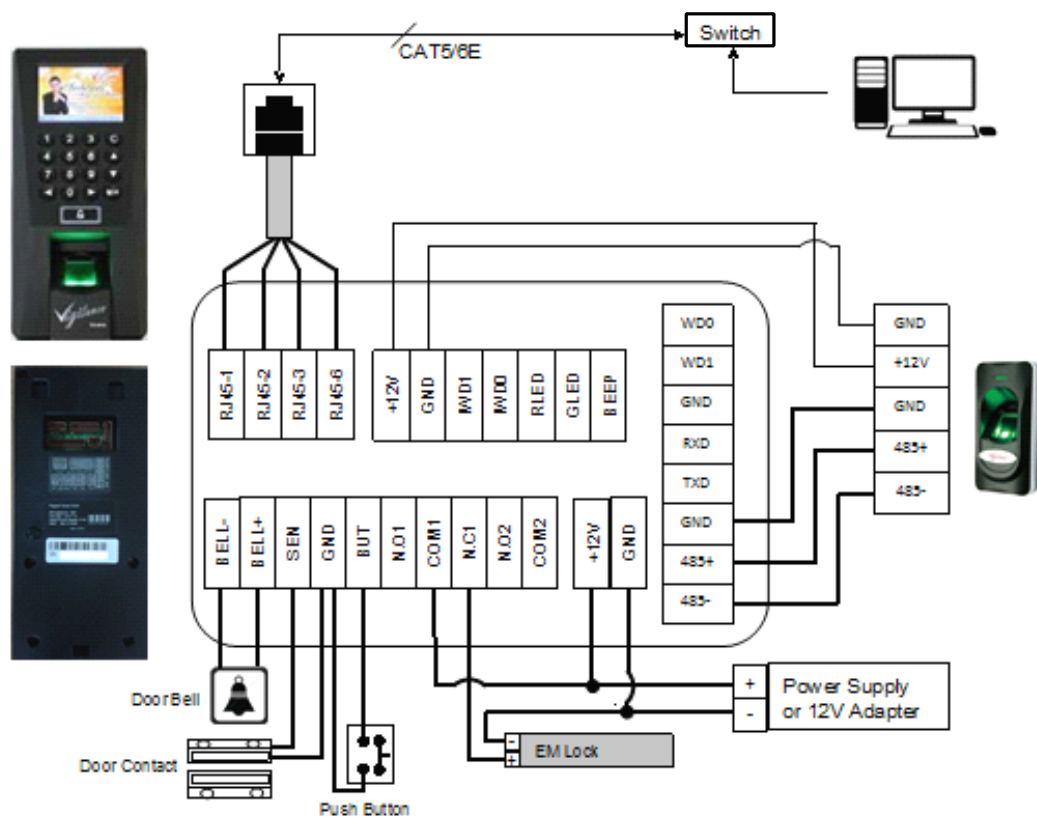
Vigilance Fingerprint Reader



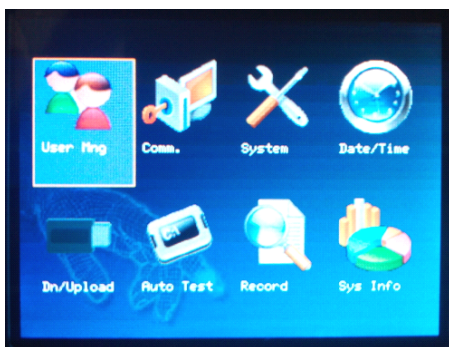
Author: Alvin Leong Date: 3rd June 2015, Revision: V2

VG818 is an innovative biometric fingerprint reader for access control applications, offering unparalleled performance using an advanced algorithm for reliability, precision and excellent matching speed. The VG818 features the fastest commercial-based fingerprint matching algorithm with high-performance optical fingerprint sensor. The device offers the flexibility to be installed standalone or with any third party panel that supports 26-bit Wiegand. All the operation can be done on the TFT-LCD. The fingerprint image will be displayed during registration to ensure proper position on finger and hence to increase the recognition rate.

WIRING DIAGRAM >>

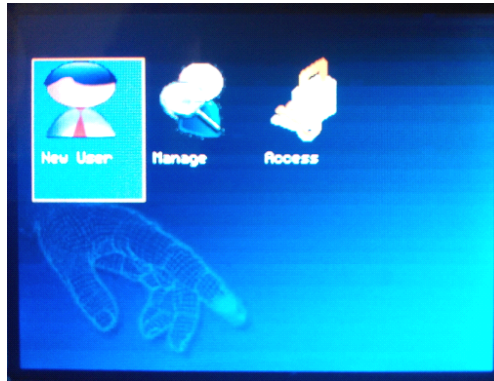


MENU SYSTEM >>



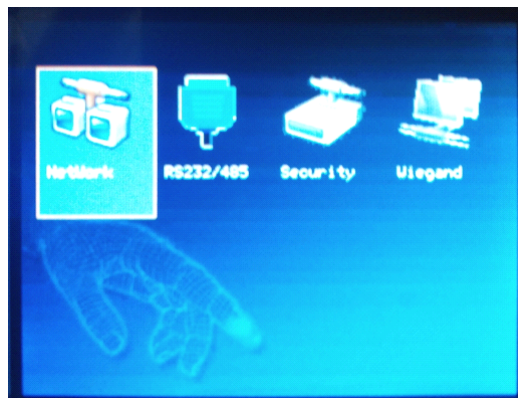
- **User Mng** - User Management
- **Comm.** - Communication Setting
- **System** - System Setting
- **Date/Time** - Date & Time Setting/Format
- **Dn/Upload** - Download or Upload Data
- **Auto Test** - System Testing
- **Record** - Attendances Log
- **Sys Info** - System Information

Note!!! VG818 may take few minute(s) to boot up as the system is upgraded with Linux Operating System(OS).
Work Code only available upon request before purchase.



➤ **User Mng**

- New User
 - **enroll New User** for Fingerprint, Password or RF (proximity card).
 - support up to 10 fingerprint per user and up to 3000 fingerprint template.
- Manage
 - manage or edit user including delete or remove user
 - **additional backup fingerprint**
 - search user or record (attendance log)
 - manage user access mode.
- Access
 - Time Zone Setting
 - Holiday Setting
 - A&C Group Setting - access mode setting
 - Unlock Combination Setting - combination setting
 - Access Control Parameter
 - > **lock release time**
 - > **door sensor time**
 - > door sensor activation / deactivation
 - > alarm timer and setting
 - > valid or invalid holiday
 - Duress Alarm Parameter
 - Anti-Passback Setting
 - > Anti-Passback In/Out or Disable
 - > select master / slave reader
 - > enable / disable 485Reader (**on/off wiegand input**)



➤ **Comm. Communication**

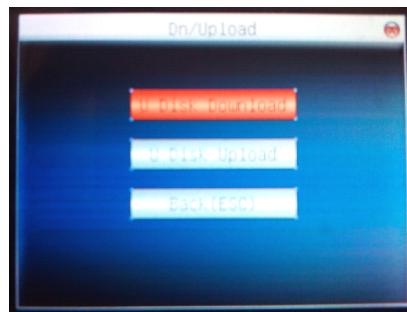
- Network
 - setting **IP Address, Subnetmask & Gateway**
 - change NetSpeed (default:Auto)
- RS232/485
 - Baud rate setting
 - RS232 on/off in/output
 - RS485 on/off in/output
- Security
 - change device **ID & Password**
- Wiegand
 - Input / Output Option for reading format (default:WG26)
 - card reading format with/without Site code.



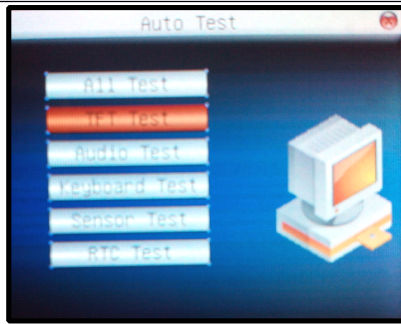
- **System**
 - System
 - date / time format
 - keypad sound and **scanner sensitivity**
 - voice & volume
 - Algorithm version (Alg9 / Alg10)
 - Data Mng
 - Delete Attendance Log, Photo, BL-Photo and all.
 - Clear Purview (clear Admin)
 - Delete Picture (Wallpaper)
 - Update
 - Firmware update (PenDrive required)
 - Display
 - Password or F/print Lock setting (retry)
 - ClockMode (Digital / OldStyle)
 - screen saver or clock delay setting.
 - **Reset**
 - reset to factory default setting, parameter setting and access mode setting.
 - Misc Set.
 - screen saver timer
 - show or hide FP Image
 - language option (Arabic / English only)



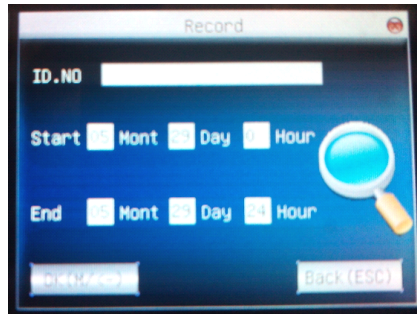
- **Date/Time**
 - change date and time
 - DST (Daylight Saving Time) enable / disable and setting



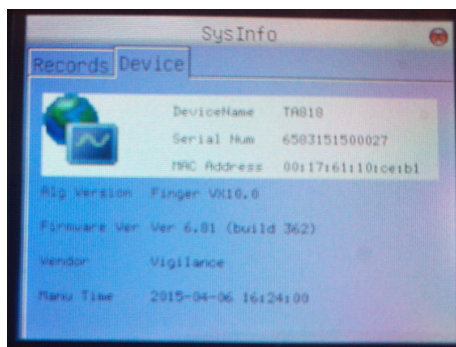
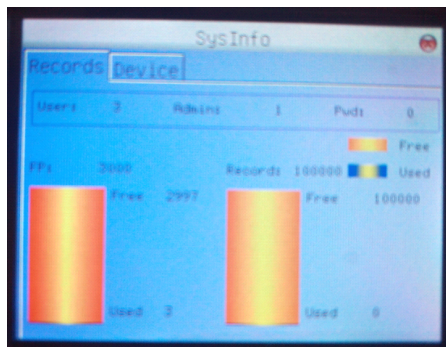
- **Dn/Upload**
 - **U Disk Download**
 - download attendance log to pendrive
 - download user info. and fingerprint template to pendrive
 - **U Disk Upload**
 - upload user info. from pendrive to reader.
 - upload picture info. from pendrive to reader.



- **Auto Test**
 - System calibration test.
 - including TFT Test, Audio Test, Keyboard Test, Sensor Test and RTC Test.



- **Record**
 - log search
 - filtering by user and starting time to ending time



- **Sys Info**
 - system information including total Fingerprint Template usage, attendance log usage and **Algorithm Version**.

CONNECT TO VAMS >>

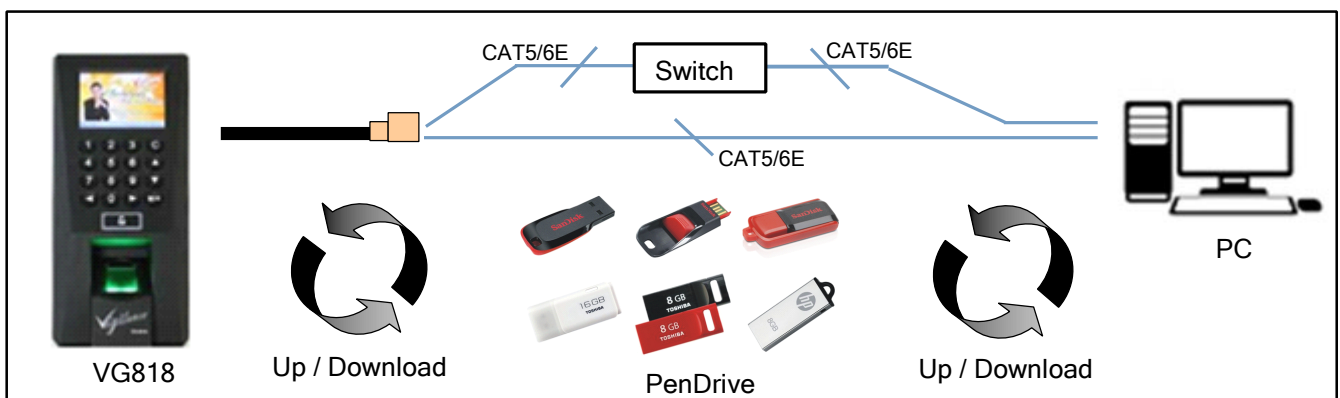


Figure 1.0

Note!!! Not all the PenDrive is supported for data Upload and Download. Data may corrupt during or after download or upload data.

There is 3 type of communication to get or transfer your data to/from the VG818. Is either by TCP/IP connection through Network or Direct Cable and Upload/Download data using a PenDrive (U Disk Management).

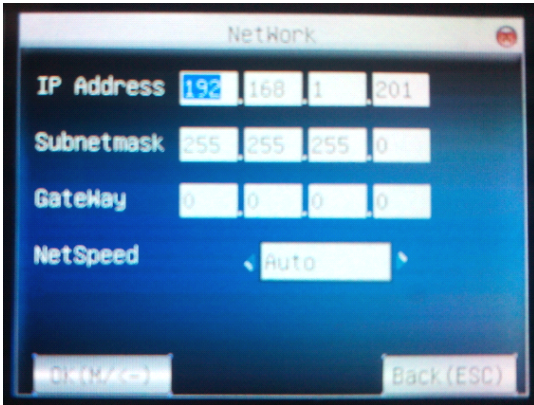


Figure 1.1

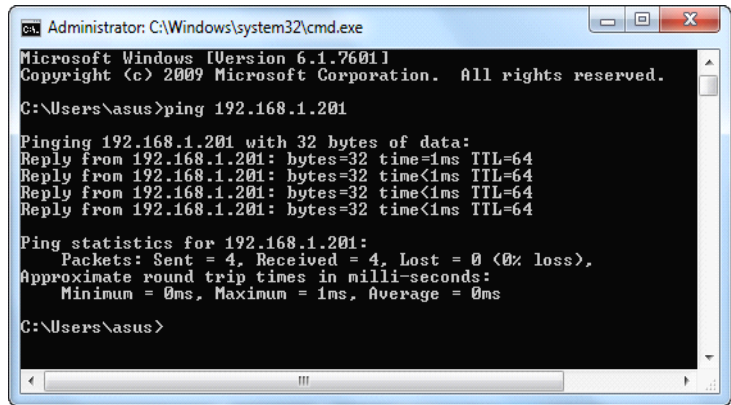


Figure 2.1

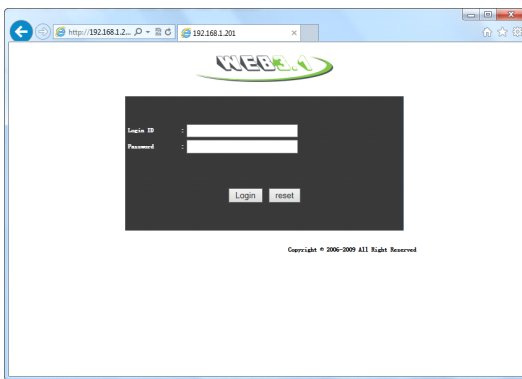


Figure 2.2

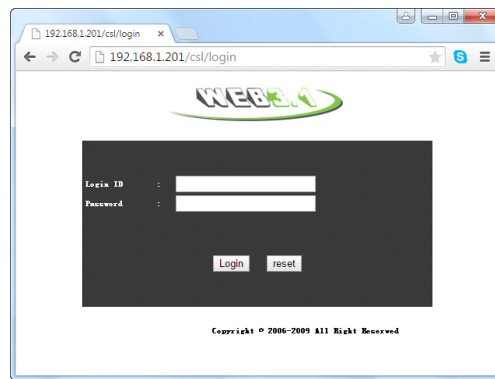


Figure 2.3

1. Change the IP Address, Subnetmask and GateWay of VG818 by access to **Menu > Comm. > Network >>** (refer to **Figure 1.1**). Please make sure that, VG818 is under the same Gateway with your PC.
2. Try to 'ping' the IP Address you have selected in the Figure : 1.1 from the PC using your command prompt or any internet browser to determine if the reader IP is valid or invalid and able to communicate. Like example in **Figure 2.1**, **Figure 2.2** and **Figure 2.3**.



Vigilance Attendance Management System (VAMS)
Figure 3.1

3. After install the software in the CD-ROM (VAMS) that bundled with VG818, double click on the Attendance Management icon located on your desktop to run the application (refer to **Figure 3.1**). Note!! Sometime the shortcut icon may not appear automatically on you desktop. Try to locate it in your Program Files or your current installed drive.
4. Try to edit or add a reader to setting up your communication within your Software (PC) to your Hardware (reader). Right click on the reader listed and edit your IP Address, Reader's ID and Reader's name (refer to the **Figure 4.1**) for setting up the TCP/IP or Direct Cable connection using.

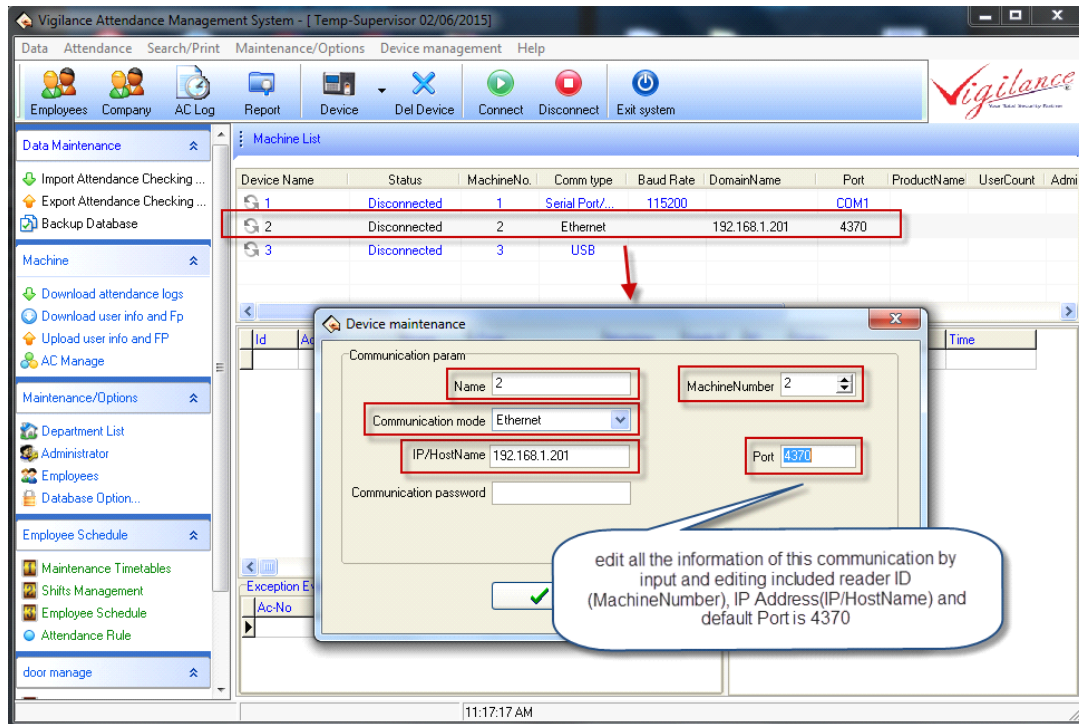


Figure 4.1

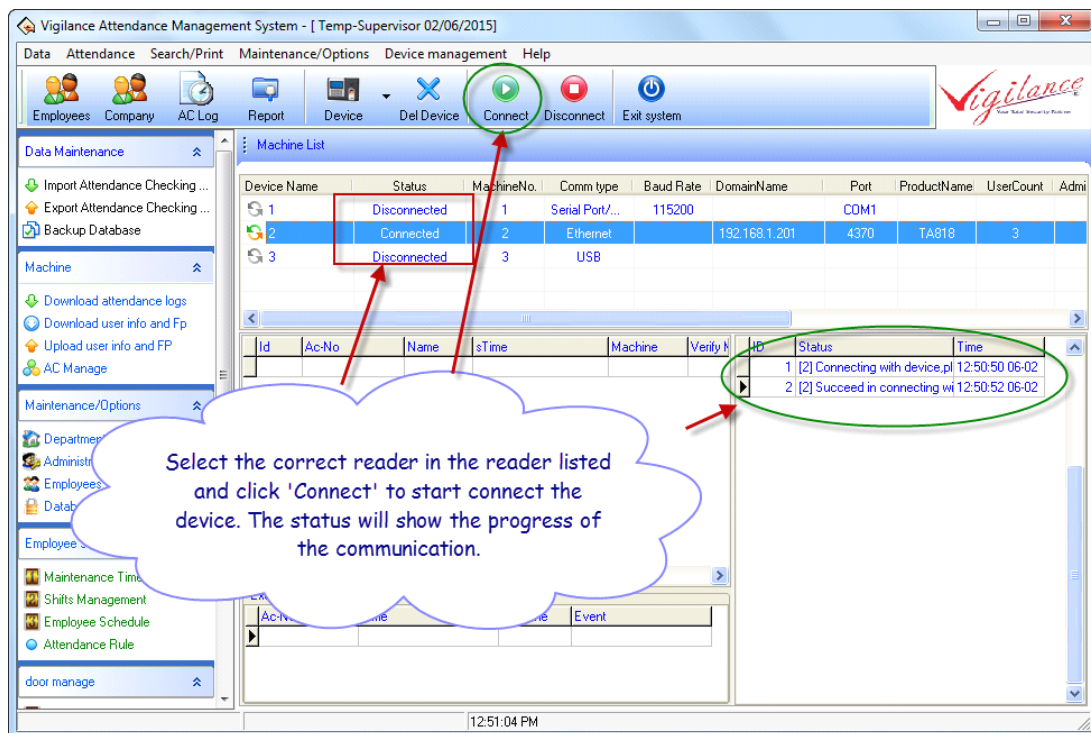


Figure 5.1

5. Select the reader that you like to communicate and click on the 'Connect' button located on the middle top of the VAMS. Right side of VAMS will show the progress of the communication. Please refer to **Figure 5.1**.

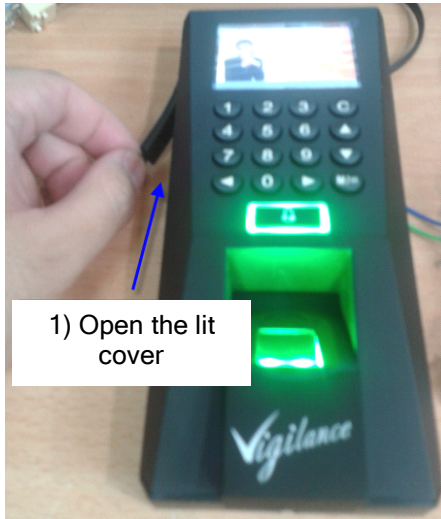


Figure 6.1

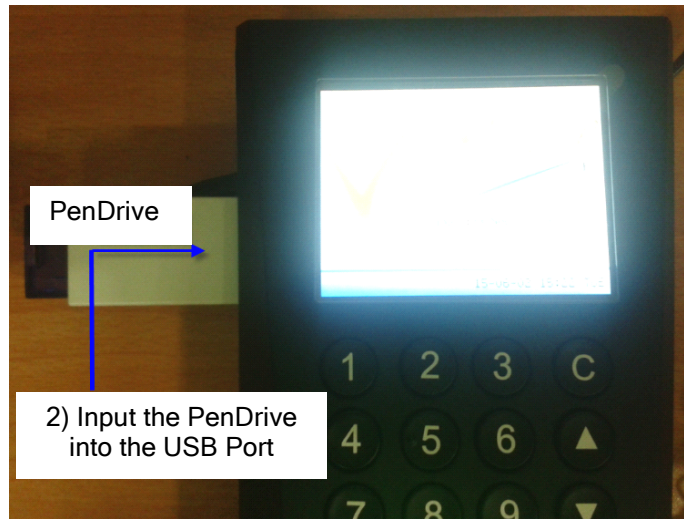


Figure 6.2

6. For certain site were no networking present, user can use a PenDrive to get a data from the VG818 and import back to VAMS to process. Refer to **Figure 6.1** and **Figure 6.2** on how to insert a PenDrive into a reader before **Dn/Upload Data**.

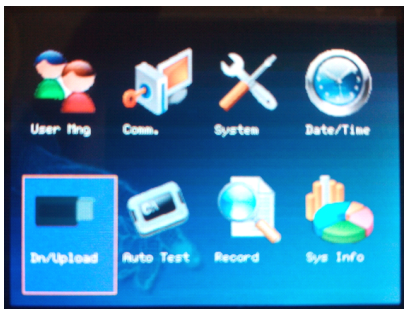


Figure 7.1

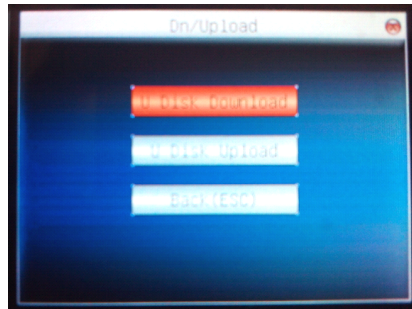


Figure 7.2

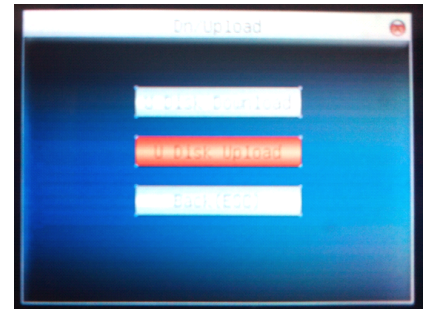


Figure 7.3

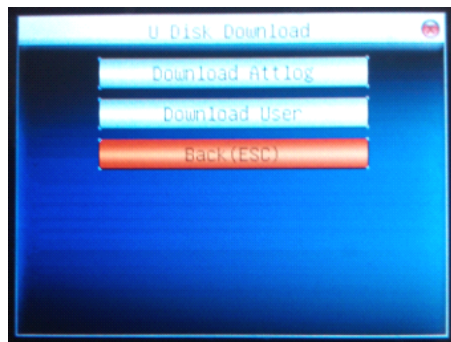


Figure 7.4

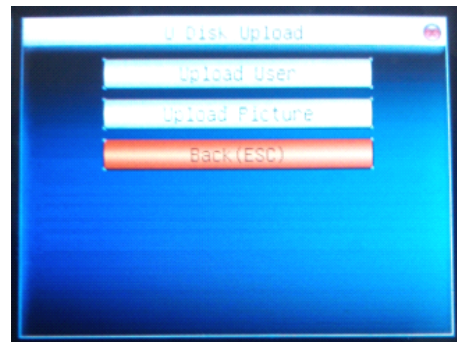


Figure 7.5

7. After input a PenDrive, access into **Menu > Dn/Upload > U Disk Download or U Disk Upload**. Please refer to **Figure 7.1**, **Figure 7.2** and **Figure 7.3** on how to start to Download or Upload a data into or from reader (VG818). **Figure 7.2** and **Figure 7.4** -**U Disk Download** mean download data from reader(VG818) to PenDrive. **Figure 7.3** and **Figure 7.5** - **U Disk Upload** mean upload data from PenDrive to reader(VG818).
8. Click on the **Data** and select '**Usb Disk Manage**' from the drop down list (refer to **Figure 8.1**). Select '**Self Service Reader** and click '**Ok**' button (refer to **Figure 8.2**). Select the drive of your PenDrive (refer to **Figure 8.3**). Click '**Import user data**' to start download the User data including Name and Fingerprint Template (refer to **Figure 8.4**). VAMS will show and indicate how many user was downloaded and total fingerprint that were downloaded (refer to **Figure 8.5**).

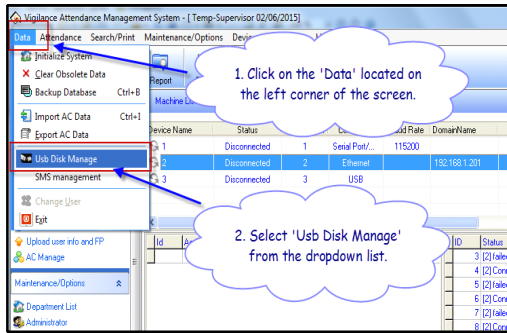


Figure 8.1

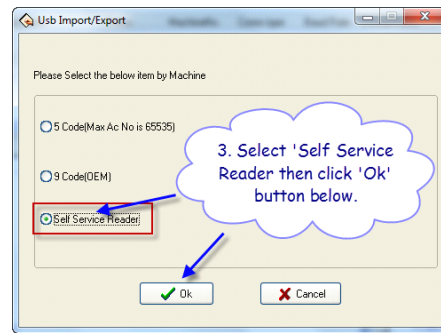


Figure 8.2

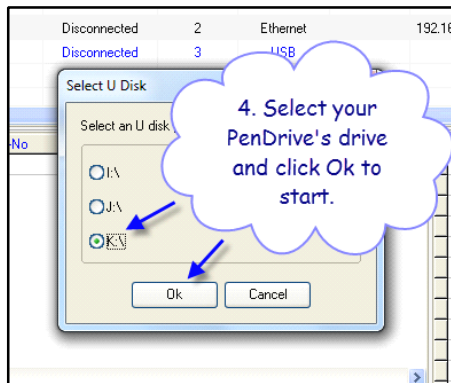


Figure 8.3

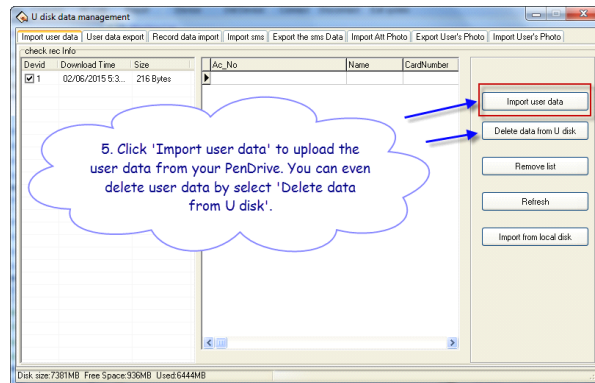


Figure 8.4

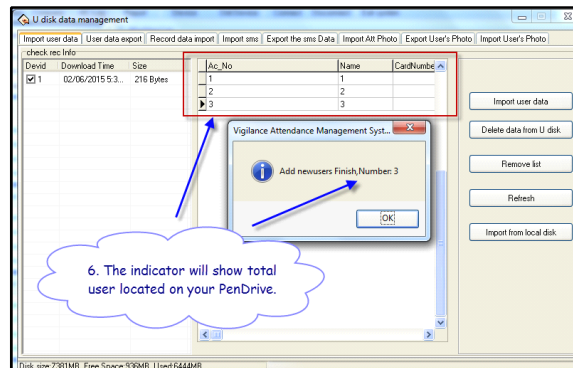


Figure 8.5

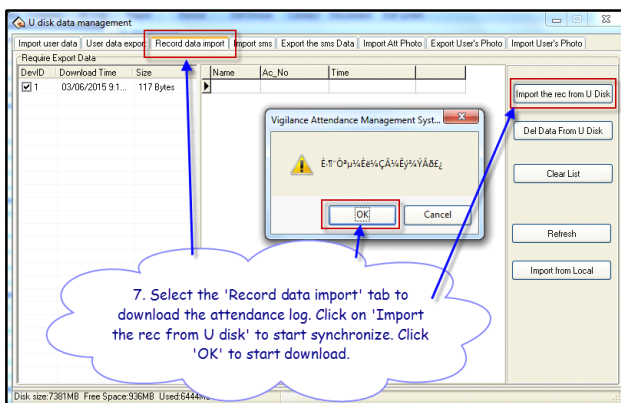


Figure 9.1

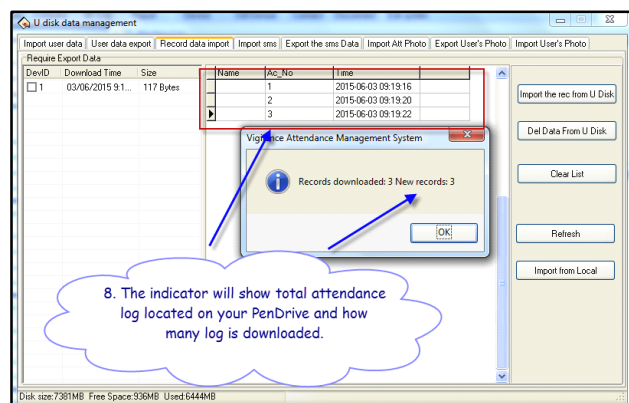


Figure 9.2

- To download attendance from the reader (VG818), select 'Record data import' tab and click on 'Import the rec. from U Disk'. Click 'OK' to start (refer to Figure 9.1). VAMS will indicate all the attendance log in your PenDrive and total attendance log downloaded (refer to Figure 9.2)