

# Panasonic KX-NS 300

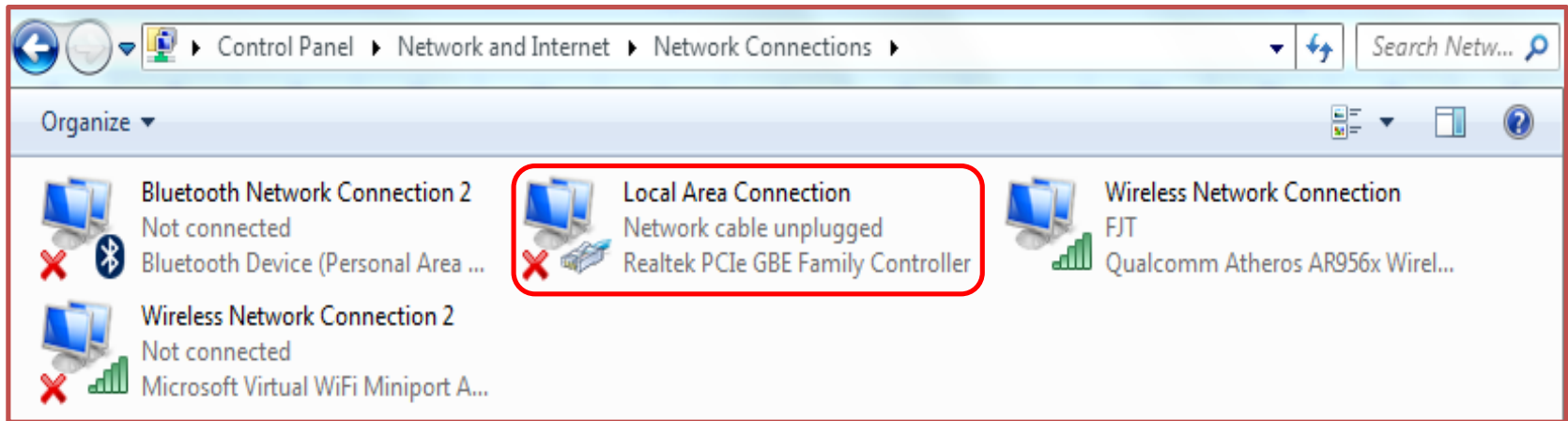
## Step By Step Log In

- 1.Setting Using Windows 7
- 2.Programming Setting Using Firefox / IE
- 3.Connection from pc LAN port to  
KX- NS300 LAN port

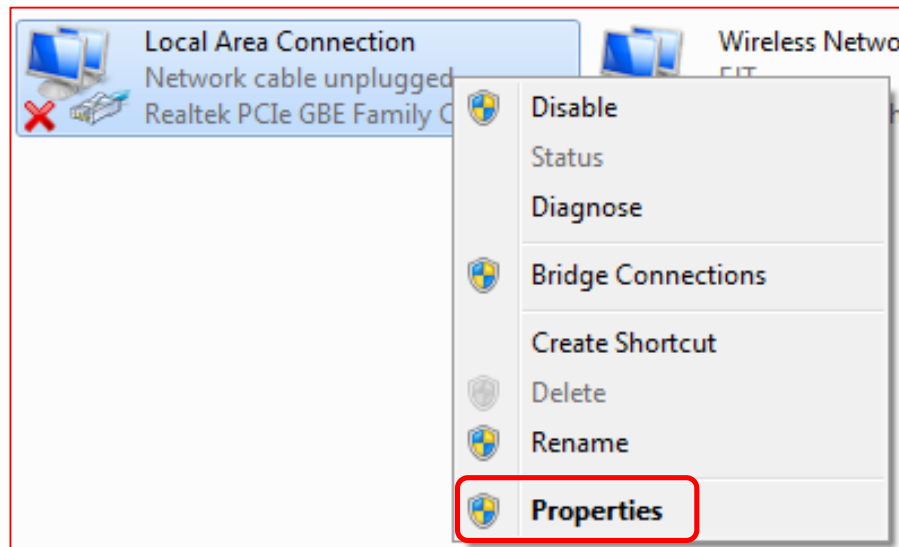
# Step 1

- To LOG IN, please set your own PC TCP IPv4 first

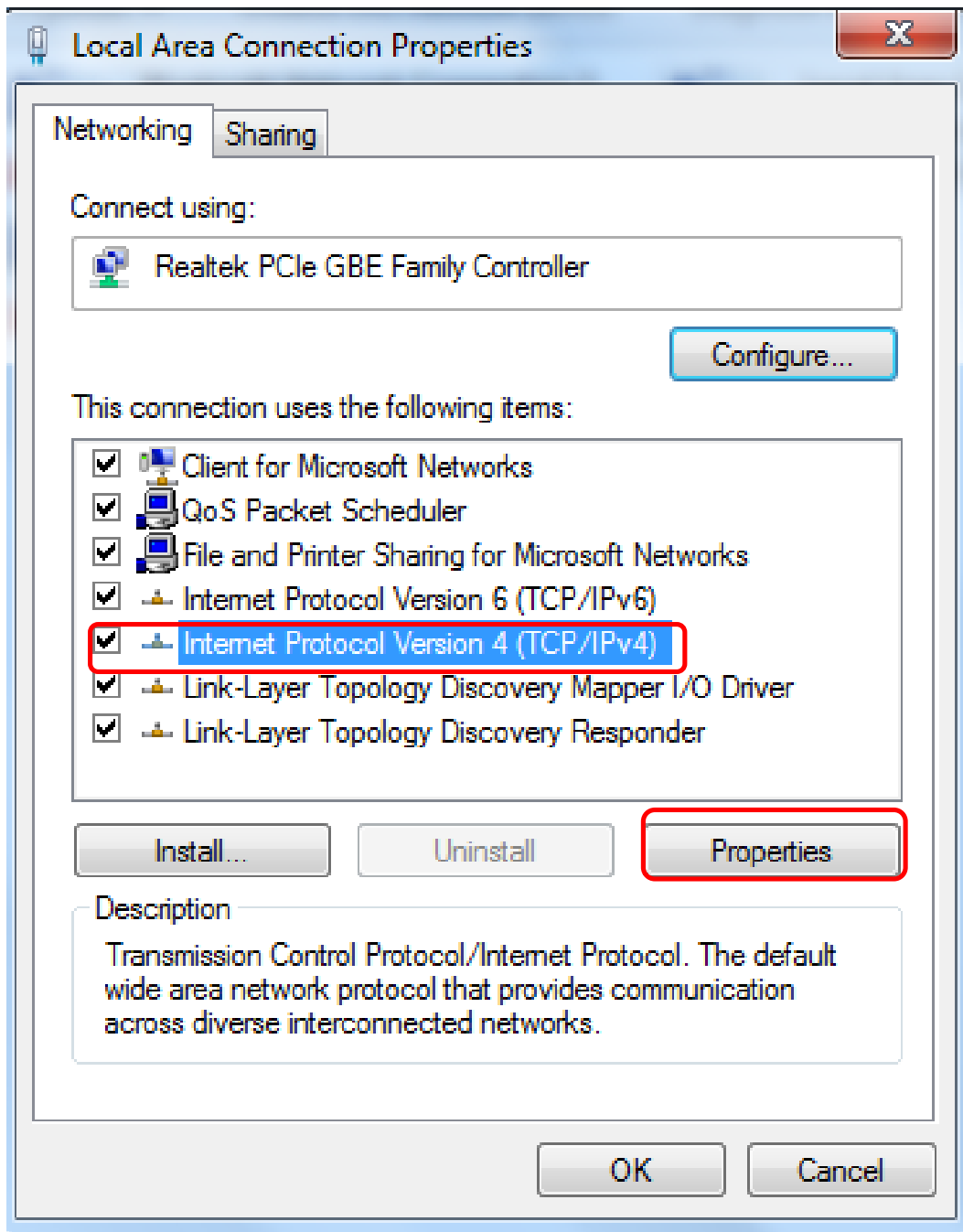
1.



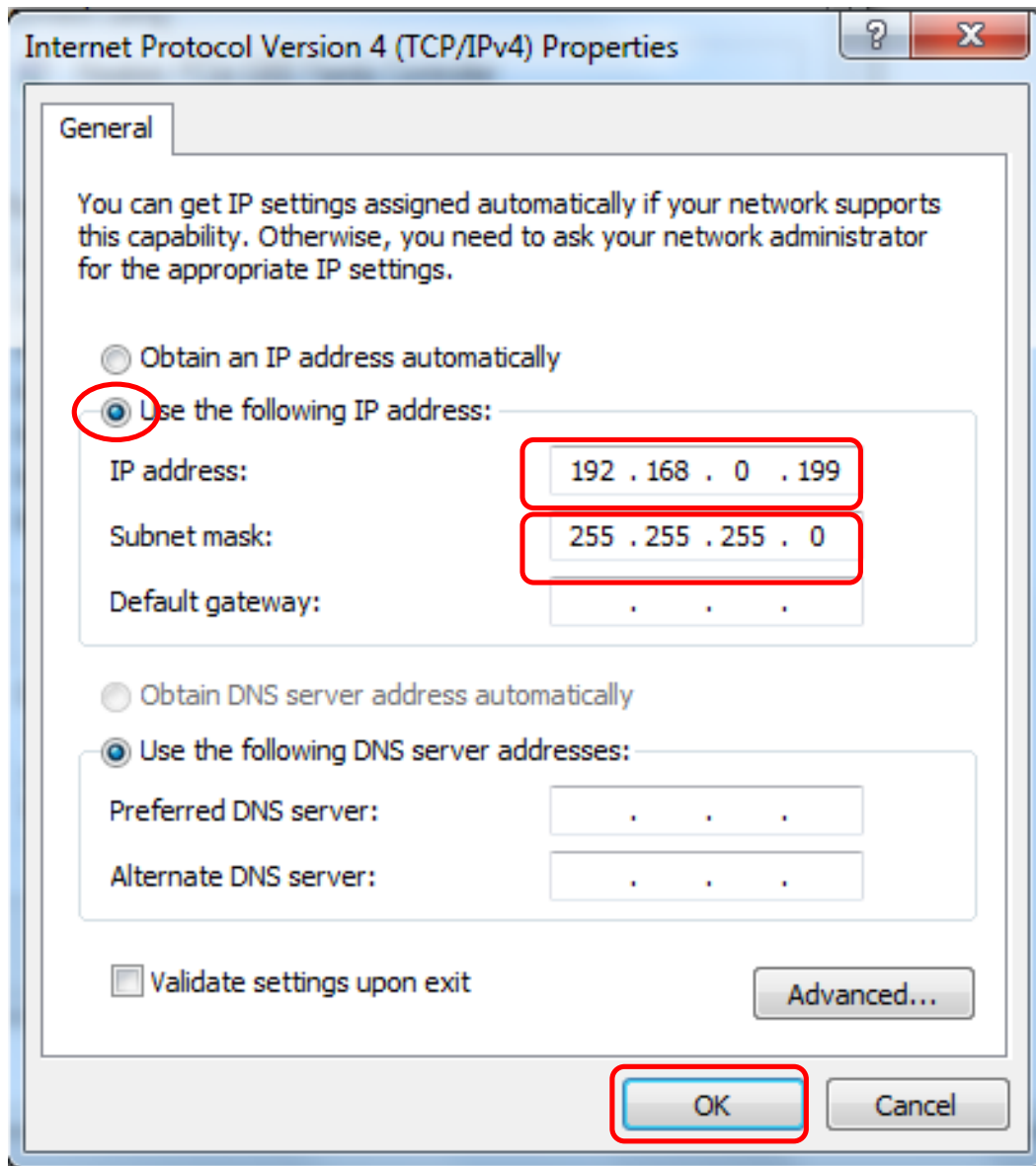
2.



3.

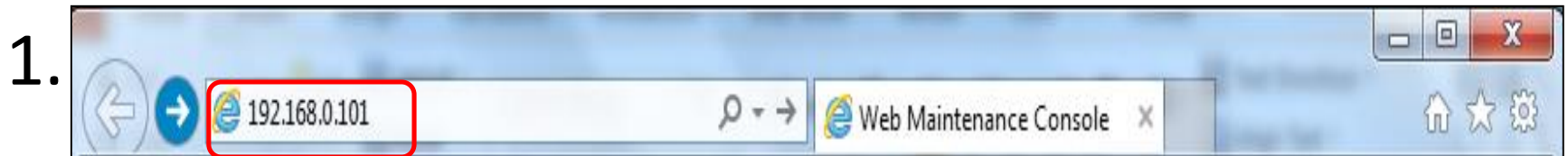


4.



# Step 2

- To log in installer programming page using IE

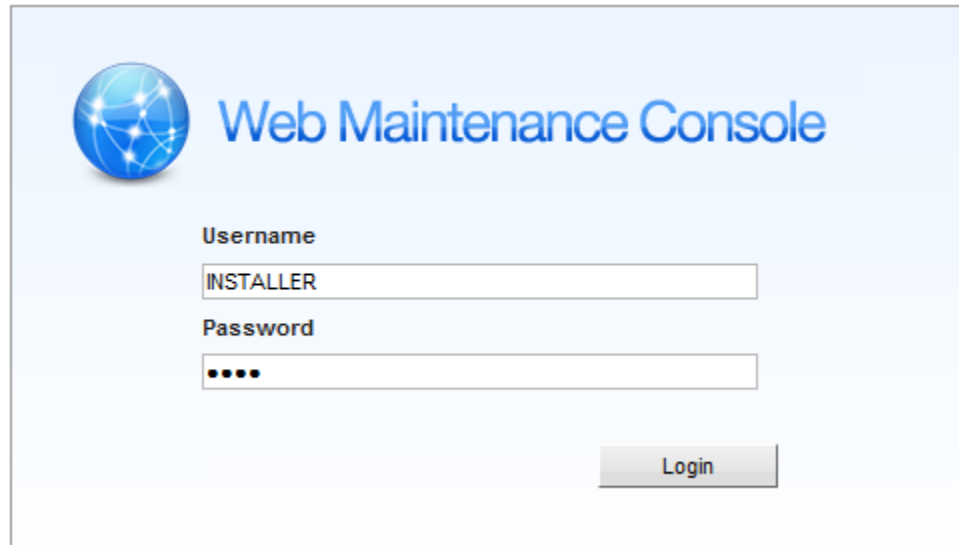


2. Username:

INSTALLER

Password:

1234

A screenshot of the "Web Maintenance Console" login page. The page has a light blue background. At the top left is a blue globe icon with white network lines. To its right is the text "Web Maintenance Console" in blue. Below this, there are two input fields: "Username" with the text "INSTALLER" entered, and "Password" with four black dots representing masked characters. At the bottom right of the form is a grey "Login" button.

# 3. Password Set Default 1234, re-enter 1234

## Easy Setup Wizard



### Welcome to Panasonic KX-NS300

WebMC Language Setting

English (UK) ▼

PBX Type

Standalone

Slave

If located on different network from Master PBX

Master PBX IP

0.0.0.0

Password Setting

Installer password (4-16 characters):

....

Re-enter (4-16 characters):

....

CAUTION: It is strongly recommended that a password should be complex for maximum protection. Change the password periodically.

One-look Network (Trial Activation Key)

\*available for 60 days from current local time:

Active

Non Active

Start Setup Wizard

Close

4.

## Easy Setup Wizard



### Date & Time

Time Zone:

+8 : 00

Local Time:

2016-04-29 10:57:21

Automatic Time Adjustment:

Disabled

ISDN and Caller ID (FSK)

SNTP

IP Address:

Port:

123

Daylight Saving

Enable

Disable

Previous

Next

Close



5.

## Easy Setup Wizard



### Numbering

Feature No

Type1 (with "x")

Type2 (without "x")

CO Access / Operator No

CO Access No

Dial "0"

Dial "1"

Dial "9"

Operator No

Dial "0"

Dial "9"

Select default value of Numbering Plan

3 digits Extension Number

From "101"

From "201"

4 digits Extension Number

From "1001"

From "2001"

Previous

Next

Close



6.

## Easy Setup Wizard

- 1 Date & Time
- 2 Numbering
- 3 **Manager / Operator**
- 4 Trunk
- 5 LAN
- 6 VoIP (Ext)

### Manager / Operator

Manager Extension : 101

Operator : 101

\* Incoming call is distributed to operator. :

Previous

Next

Close

# 7.

## Easy Setup Wizard



### Trunk

CO Dialling Mode

DTMF

Pulse

Selection for PRI30 / E1

PRI30

E1

Incoming Call Distribution Group

Do you wish to set separate ICD Groups automatically as DIL destinations for all installed LCOT ports ?  
If you select "Yes", incoming calls can appear on different PT S-CO buttons when multiple incoming DIL calls arrive simultaneously at the LCOT ports, and so on.  
Please select "No" if the ICD Group Queuing feature is to be used (in Contact Center for example).

If you select "Yes", the following items are set automatically.

1. [10.2 DIL Table & Port Settings](Max:64 trunks)  
No.1 [DIL Destination](Day/Lunch/Break/Night) : 601  
No.2 [DIL Destination](Day/Lunch/Break/Night) : 602  
:::

2. [3.5.1 Group Settings]  
32 extensions are assigned to ICD Groups(No.1-No.64) as members

3. [3.5.1 Group Settings]  
"All" is set for [Call Waiting Distribution] of ICD Groups(No.1-No.64) in [Main]

Yes

No

Previous

Next

Close

8.

## Easy Setup Wizard



### LAN

IP Address for main unit

- Obtain an IP address automatically  
 Use the following IP address

IP Address:	192.168.0.101
Subnet Mask:	255.255.255.0
Default Gateway:	0.0.0.0

IP Address for DNS server

- Obtain DNS server address automatically  
 Use the following DNS server address

Preferred DNS IP Address:	0.0.0.0
Alternative DNS IP Address:	0.0.0.0

IP Address for DSP

- Obtain DSP IP address automatically  
 Use the following DSP IP address

DSP 1 IP Address:	192.168.0.102
DSP 2 IP Address:	0.0.0.0

Previous

Next

Close



9.

## Easy Setup Wizard

- 1 Date & Time
- 2 Numbering
- 3 Manager / Operator
- 4 Trunk
- 5 LAN
- 6 VoIP (Ext)**

### VoIP (Ext)

Number of IP Extensions

	Number of IP Extensions (Max 32)		Number of cards (Max 4)
IP-PT (NT)	<input type="text" value="0"/>	V-IPEXT8	0
UT/UDT	<input type="text" value="0"/>	V-UTEXT8	0
SIP-Phone	<input type="text" value="0"/>	V-SIPEXT8	0
Total	0		0

IP Terminal Registration Mode

- Manual
- Full Automatic
- Extension Number Input

DHCP Server

- Disable
- Enable

Starting IP address  Ending IP address

Previous

Finish

Close

# 10.

**NS300 Web Maintenance Console [Off-line]**

Login as INSTALLER

**Slot**

System Property | Activation Key | IP Phone Registration | VoIP Property | UM Property

Trunk Slot Card	Extension Slot Card
LCOT6	MCSLC16
PRI30	MCSLC8
PRI23	DLC16
BRI4	DLC8
BRI2	DHLC4
E1	
DPH2	

**Panasonic KX-NS300 Basic**

Diagram illustrating the hardware configuration for the Panasonic KX-NS300 Basic system. The system is shown with three main slot sections (1, 2, 3) and an EXP-M section. Slot 1 contains an EXP-M card. Slot 2 contains a Trunk/DPH2 card (blue) and an LCOT6 card (yellow). Slot 3 contains an Extension card (brown) and an MCSLC16 card (green). The diagram is numbered 4, 5, 6, 7 on the sides.

Virtual Slot