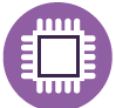




# LED SOLAR FLOOD LIGHT (SW)



ASEM 2.0



Solar Panel  
18%



10 Years  
Lifetime



3 Years  
Warranty



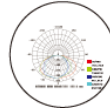
IP 66



70 °C High  
Temperature  
Application



16 Grade  
Wind Proof



Large Light  
Distribution



MPPT  
Charging  
Technology



Multiple installation: ground/wall mount/  
pole mount, outdoor/indoor use.



Controlled optical lens,  
30/60/90/120 degree beam angle



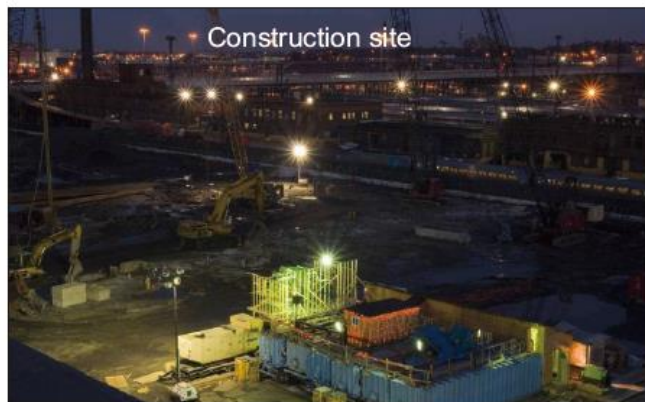
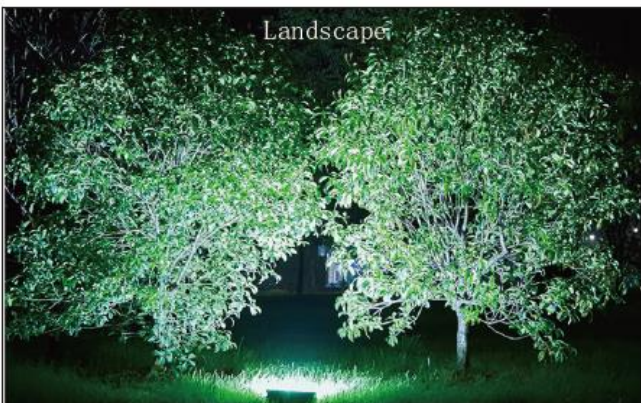
High efficiency mono  
crystalline silicon solar panel



All in two design, quadded connectors,  
only need these two connectors to connect,  
lights work



Die cast aluminum housing,  
long lifetime and good heat dissipation



Model	EGE-SFL050-SW3	EGE-SFL100-SW5	EGE-SFL200-SW6	EGE-SFL300-SW7
Light Power (LED)	50W	100W	200W	300W
Solar Panel	18V / 20W	18V / 45W	18V / 60W	18V / 80W
Battery	3.7V / 20AH	3.2V / 48AH	3.2V / 60AH	3.2V / 80AH
Lamp Luminous	100 LM/W			
Luminous Flux	5000 LM	10000 LM	20000 LM	30000 LM
Charge Time	≥ 6 Hours			
Discharge Time	Full Power 10 ~ 12 Hours			
	Saving Mode ≤ 36 Hours			
Intelligent Mode	Default working mode, 50% brightness whole night (five lighting modes available)			
Color Temp	3000K / 6000K.			
IP Rating	IP 65			
Beam Angle	60/90/120°			
Dimming Mode	First 4 Hours Full Brightness, Second 4 Hours 50% Brightness and last 4 Hours 25%			
Coverage Area	80-100 m <sup>2</sup>	130-150 m <sup>2</sup>	180-200 m <sup>2</sup>	300-400 m <sup>2</sup>
LED Lifespan	≥ 50000 Hours			
Certification	CE, RoHS,			
Fitting Material	Aluminum Alloy and ASA / Temper Glass & PC (Aluminum Alloy #6063)			
Lamp Size (MM)	320*239*53	365*264*58	413*315*63	440*349*63
PV Size (MM)	315*350*17	430*350*17	550*350*17	630*350*17

Remarks: Detail and specification are current at the time of publication but may be changed without prior notice

