



LED STREET LIGHTING (ST10)



Application:

Widely used: Highway or Multi Lane Urban Main Roads, Fast-speed, Medium-speed, and Low-speed roads, Crossroad, Bridge, Open Parking Area, Residential Road, Compound Area and Garden Area.

Product Features and Advantages.

1. **Fitting Body:** High pressure die casting aluminum body, impact resistance reach IK08.
2. **Tempered glass protector:** High performance tempered glass with high light transmittance.
3. **Modularity design:** Modular optical lens design, easy for future upgrading and improvement.
4. **Waterproof IP66:** The silicone circle sealing technology and waterproof IP66 can completely prevent dusts and water in rainstorm.
5. **Clip on designed:** makes lamp easy to installation, maintenance and replacement.
6. **Detachable design:** Use fast turn off power protector connector and make easy and safe for maintenance.
7. **Sturdy and Durable:** Aluminum module has surface anodic oxidation process, getting a protective shield and greatly enhance the stain resistance. Its cover is resistance to high heat, anti-aging and lasting brightness, therefore is widely used at outdoor.

Electrical & Mechanical Protection Function

- ✓ Output over - Voltage Protection
- ✓ Output over - Current Protection
- ✓ Short Circuit Protection
- ✓ Over Temperature Protection
- ✓ Surge Protection: 10KV optional 20KV
- ✓ Ingress Protection: IP66
- ✓ Impact Protection: IK08
- ✓ Full set of Stainless-steel screw use.
- ✓ Full set of waterproof connector use.
- ✓ Anti UV and Fireproof Optical PC Len & Temper Glass.

Model & Specification

Model	EGE-SL030/050/070-ST10	EGE-SL090-ST10	EGE-SL120/150-ST10	EGE-SL180/240/300-ST10
Power (W)	30/50/70	90	120/150	180/240/300
Input Voltage	AC100 ~ 277V			
Frequency	50 / 60 Hz			
Power Factor	>0.95			
Working Temp	- 30°C ~ + 50°C			
CRI	Ra ≥ 70 (80 optional)			
Luminous Flux (LM)	4200/7000 / 9800	12600	16800/21000	26100/34800/43500
Lamp Luminous	140LM/W			145LM/W
Color Temp	4000K, (3000K/5000K optional)			
LED Source	Nichia LED 3030			
LED Driver	Sosen			
IP Rating	66			
IK Rating	08			
Beam Angle	Multiple optical lens Type I, II, III, IV, V.			
Socket Diameter	Ø 36, 42, 60, 76mm			
Intelligent option	Photocell Sensor			
Lifespan	≥ 50000 Hours			
Material	Aluminium Alloy ADC12 / PC / Temper Glass.			
Dimension	649×272×179mm	762×336×179mm		887×378×196mm
Weight	6.9Kg	8.5Kg	8.7Kg	11.7KG

Light distribution



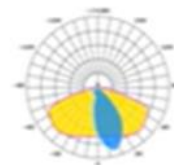
Type I



R17602 R01601



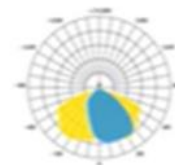
Type II



R17601 R09601
R17602 R09602
R17603 R09603
R17604 R05002
R01602



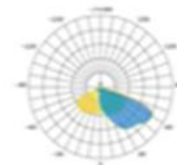
Type III



R17601 R09603
R01603



Type IV



R01604



Type V

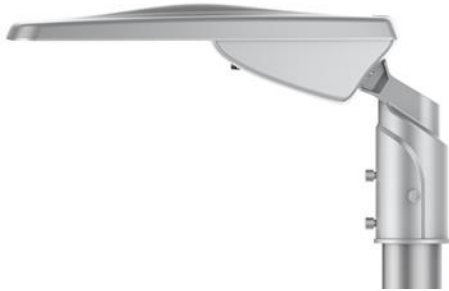


R17605 R09604
R01605

➤ Easy for maintenance, Smart structure, separated by two parts.



➤ Avoid accumulation of dust and sand proof

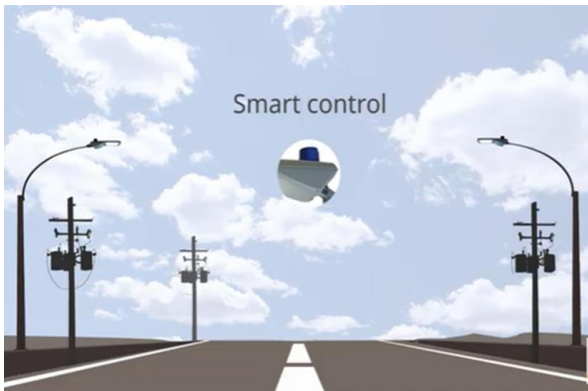
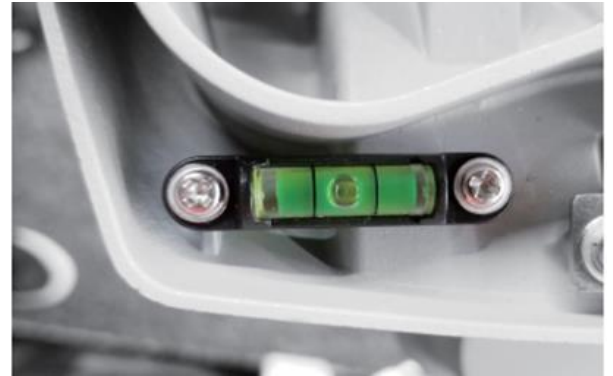


➤ Avoid internal fogging and frosting



- IP66 water-proof and dust-proof
- Internal surge protection device (SPD) 10KV (20KV optional) surge protection.

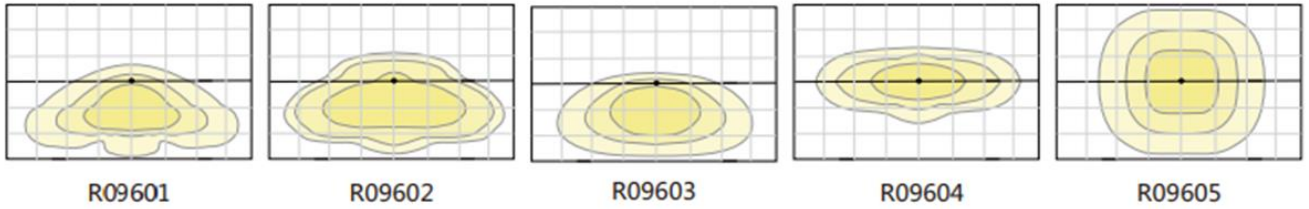
➤ Accurate and easy for installation



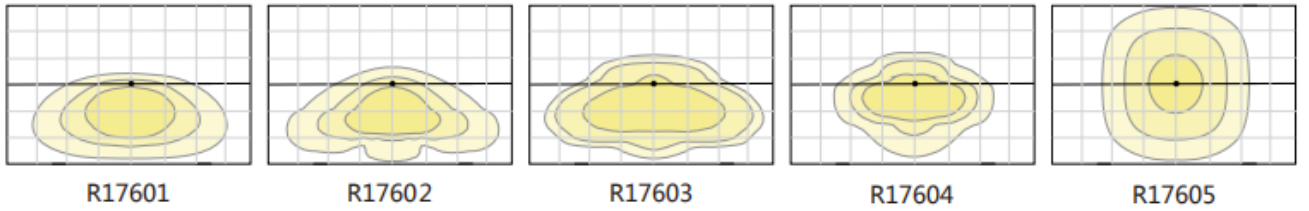
Professional optics and applications

- Light distribution optional

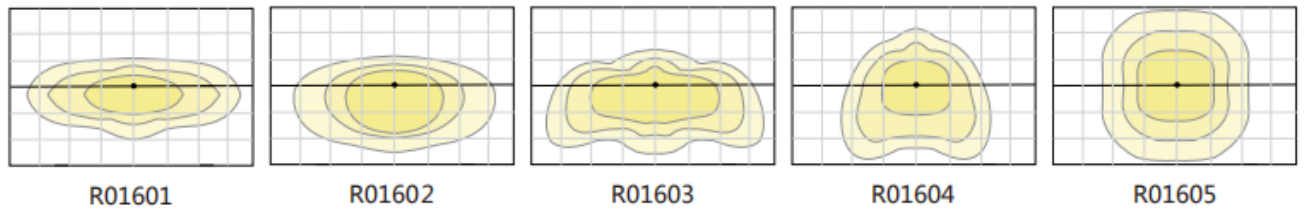
A: 30W, 50W,70W, TYPE I to TYPE V



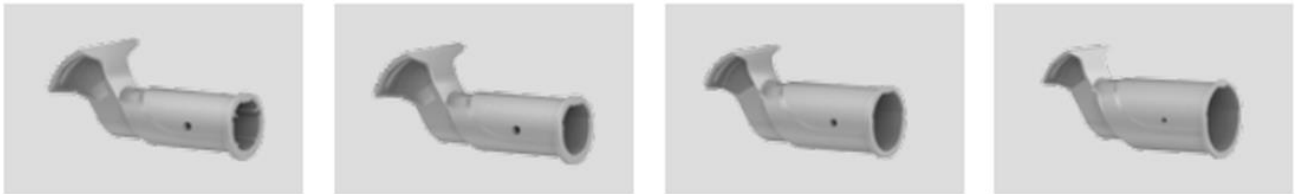
B: 90W, 120W,150W, TYPE II to TYPE V



C: 180W,240W, 300W TYPE I to TYPE V



- Pole mount adaptor, aluminum ADC12+ powder coating Suitable for 34mm, 42mm, 60mm, 76mm poles.



34mm

42mm

60mm

76mm

- Physical dimensions

