



## ST53 LED Street Light

Classic but different design  
makes your product recognizable



160LM/W



IP66



IK10



Class I



Class II



20-180W



## Upgraded structure design

Innovative design separates LED module from driver chamber, enhances the air convection and therefore brings excellent heat dissipation performance

Smooth surface avoids accumulation of dust, sand, leaves, water and snow



It's easy to maintain by loosening two screws of the bottom cover

## Smart control for more energy saving

Photocell, 3/5/7 pin NEMA socket  
LoRa/Zhaga socket optional

Full wattage  
Small size: 20w/30w/40w  
Medium size: 60w/75w/100w  
Large size: 120w/150w/180w



Plug-and-play microwave/PIR sensor optional



NEMA



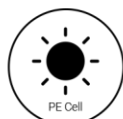
LoRa



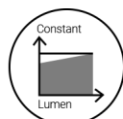
Zhaga



Sensor



Photocell



CLO



0-10V

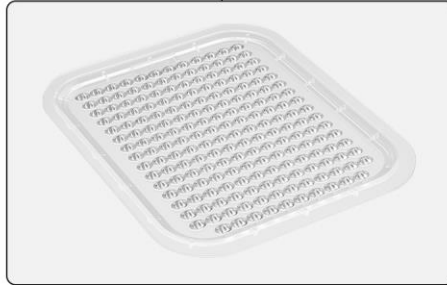
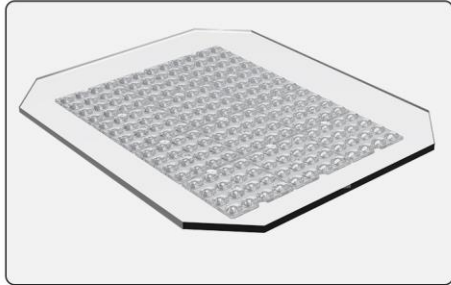


Timer dimming



DALI

# Flexible solution



16-in-1 PC lens+tempered glass cover 160lm/W  
IK09

An integrated PC lens  
165lm/W IK10

Light distribution type  
R01601/R01602/R01603/R01604/R01605/R01606/R01607/R01609/R01610/R01611/R01603

20-40W: R09401/R09402/R09404  
60-100W: R19001/R19002/R19004  
120-180W: R31801/R31802/R31804

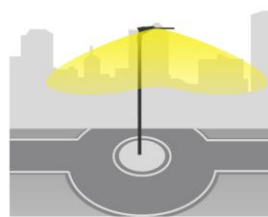
## Parking lot



R01603



R01604

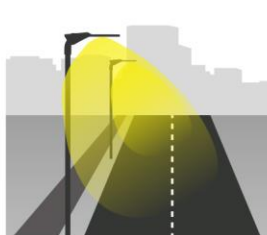


R01605

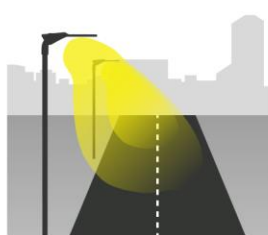
## Roads



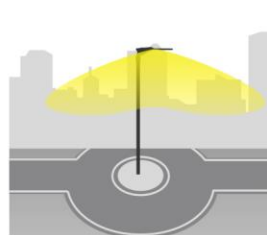
R01601



R01602



R01603



R01605



R01606



R01607



R01609



R01610



R01611



R01613

# ST53 Product Range

Model No	EGE-ST53-020	EGE-ST53-030	EGE-ST53-040	EGE-ST53-060	EGE-ST53-075	EGE-ST53-100	EGE-ST53-120	EGE-ST53-150	EGE-ST53-180
Power Consumption(±5%)	20W	30W	40W	60W	75W	100W	120W	150W	180W
Input Voltage	100-240 VAC / 220-240 VAC , 50 / 60 Hz								
Control	Dimmable, photocell, DALI, ZHAGA, microwave sensor, PIR sensor								
Luminous Flux (±10%)	3200	4800	6400	9600	12000	16000	19200	24000	28800
Efficacy (4000K RA70)	160LM/W (Small PC lens+Glass)				165LM/W (One-piece PC lens)				
CCT & CRI	4000K (3000K, 5000K optional), Ra70 (Ra80 optional)								
Beam Angle	<p><b>16-in-1 PC lens+tempered glass cover:</b> R01601,R01602,R01603,R01604,R01605,R01606,R01607,R01609,R01610,R01611,R01613</p> <p><b>An integrated PC lens:</b>            20-40W: R09401, R09402, R09404            60-100W: R19001, R19002, R19004            120-180W: R31801, R31802, R31804</p>								
Protection Rating	IP66, IK08/IK10								
Socket Diameter	Ø 32, 42, 60, 76 mm								
Operating Temperature	Class I : -30°C to + 50°C    Class II : -30°C to + 40°C								

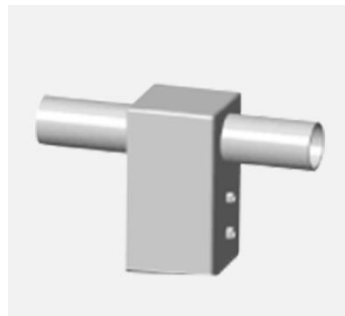
## Various mounting adaptors optional



L adaptor for dia 60mm pole



Spigot for pole (34/42/60/76mm optional)



2 lights adaptor for 100x100mm square pole



2 lights adaptor for dia 60mm/76mm pole



Adaptor for 100x100mm square pole



Adaptor for 90mm pole



Mounting adaptor for dia.60mm Spigot



Corner adaptor