

Solar LED Tri Proof Light

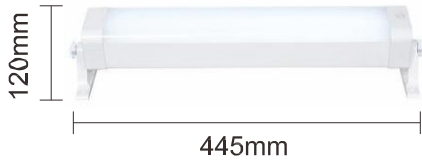
Product Specification



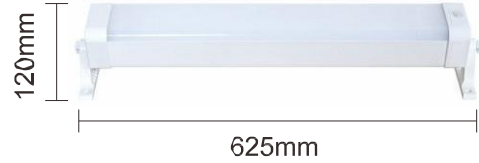
Product Parameter

Model	EGE-0923A-020	EGE-0923B-040	EGE-0923C-060	EGE-0923D-080
LED Lamp	2835 LED 120PCS	2835 LED 180PCS	2835 LED 240PCS	2835 LED 300PCS
Solar Panel	9V 15W Mono-Crystalline	9V 20W Mono-Crystalline	9V 28W Mono-Crystalline	9V 38W Mono-Crystalline
Battery Type	LiFePO4 6.4V 12AH	LiFePO4 6.4V 18AH	LiFePO4 6.4V 24AH	LiFePO4 6.4V 30AH
Color Temperature	6000K			
Charging time	6-8 hours			
Discharging time	20-24 hours			
Sensing Method	PIR Detection			
Luminous Flux	100Lm/w			
LED Lifespan	50000H			
Material	Aluminum+PC			
Product Size	445*120*120mm	625*120*120mm	805*120*120mm	1035*120*120mm
Lamp Body Packing Size	505*405*255mm 8pcs/CTN	685*405*255mm 8pcs/CTN	850*305*255mm 6pcs/CTN	1085*205*250mm 4pcs/CTN
Solar Panel Packing Size	370*355*370mm 8pcs/CTN	430*355*380mm 8pcs/CTN	545*270*380mm 6pcs/CTN	780*185*375mm 4pcs/CTN

PRODUCT SIZE



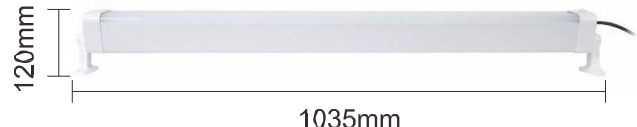
20W



40W



60W



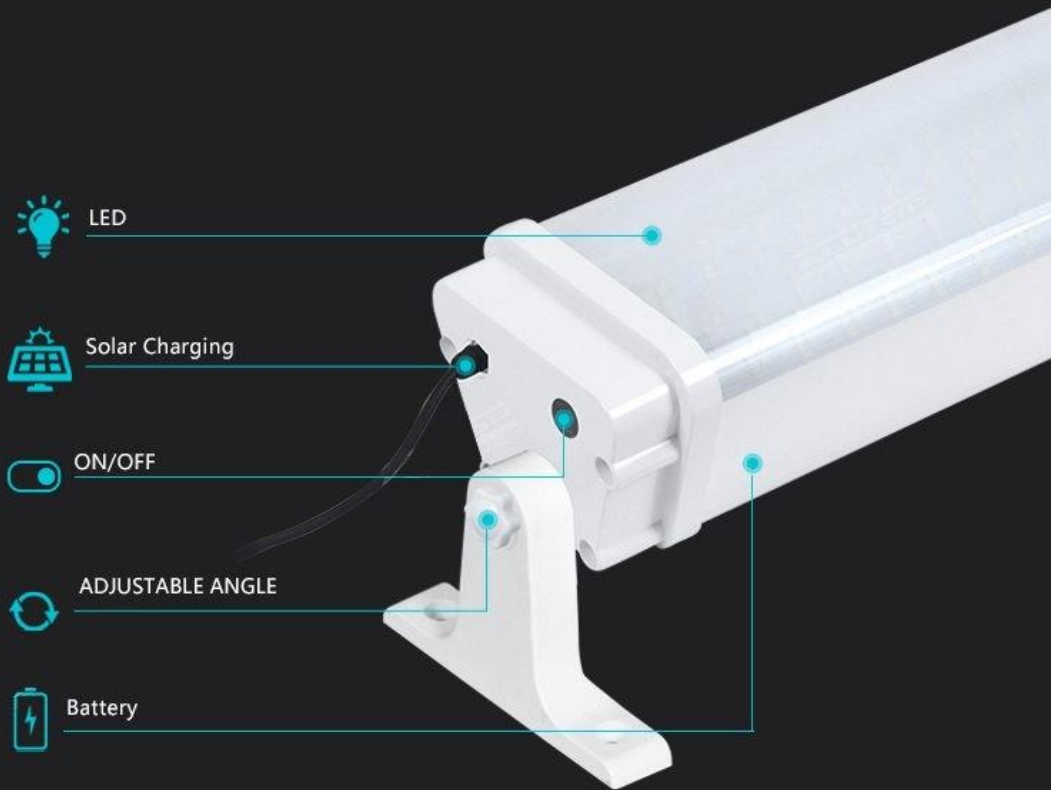
80W

APPLICATIONS

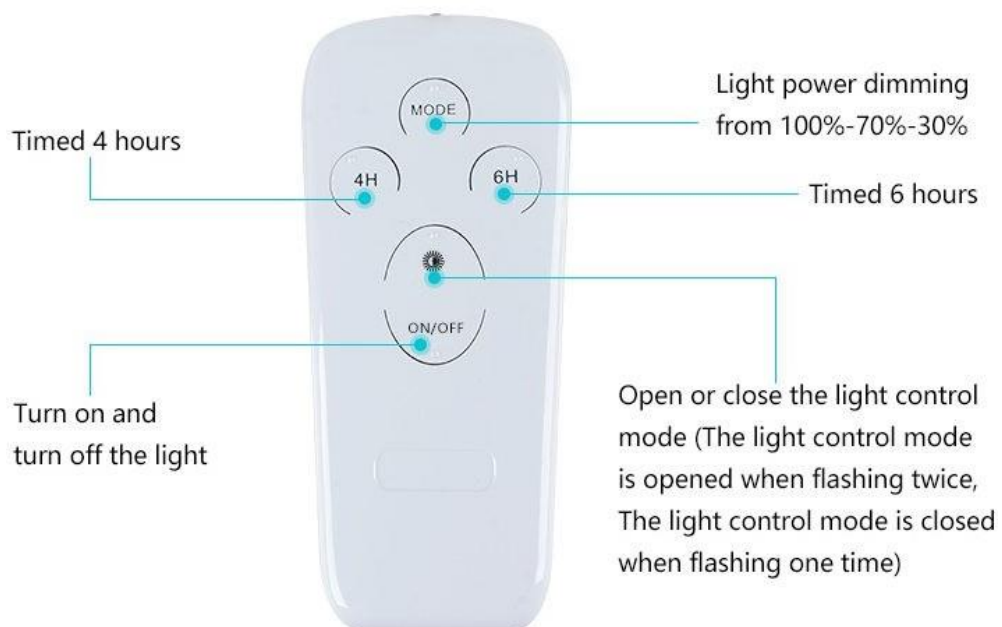


The courtyard, Removable toilet, The classroom
Swimming pool, Subway station, Factory workshop
Parking lot

ANALYSIS



Operation Instruction Of Remote Control



DETAILS



High Quality Solar Panel

High conversion rate and fast charging speed.



The Switch Starts With A Press

You need to turn on the switch to turn on the lights at night.



Aluminium Lamp Body

Stable and strong, waterproof and rustproof.

DETAILS



Adjustable Installation Angle

According to the actual installation needs to adjust the angle of the lamp. It can be adjusted at any angle for easier installation.

PRODUCT DETAILS

01

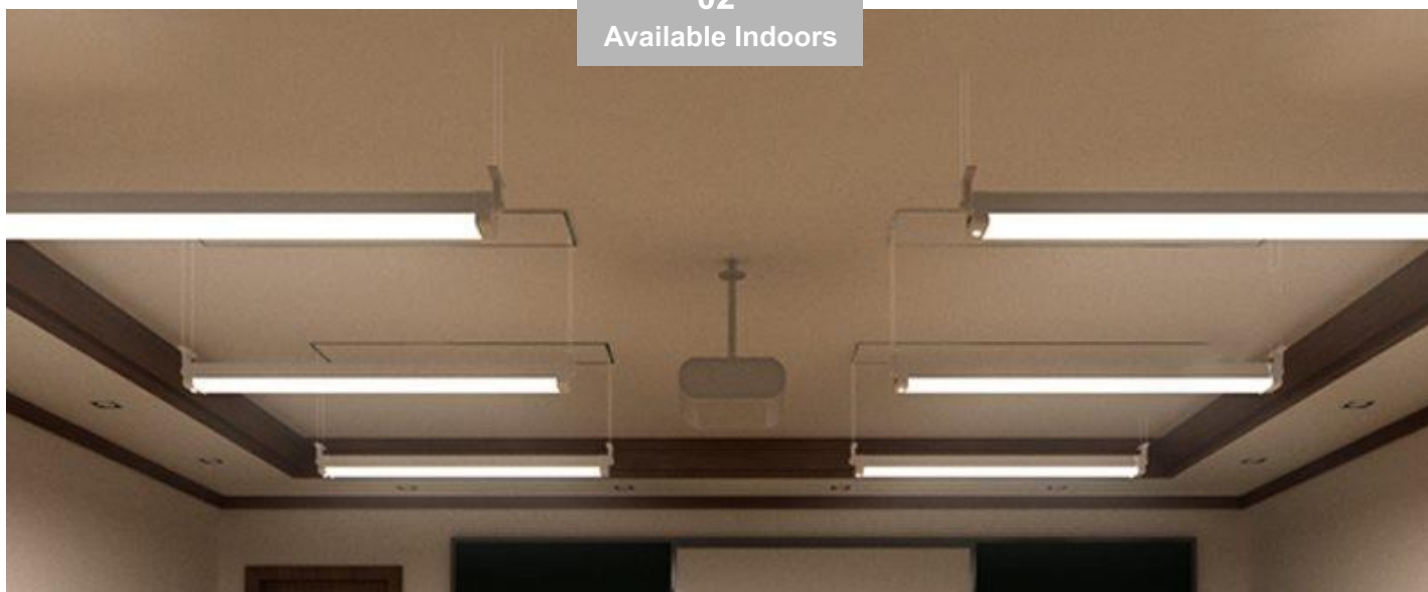
Solar Charging

5~6 rainy days when the battery is full
6~8 hours can be fully charged
Conversion rates are as high as 19%-21%

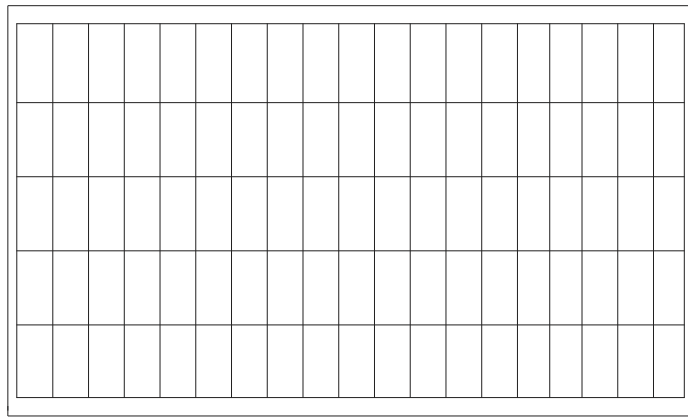
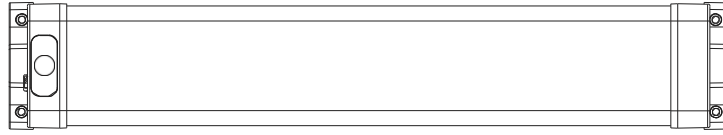


02

Available Indoors



Installation



Tips:

1. Installation direction of the solar panel is 5-10 degrees south to west, an angle of 35 degrees with the horizontal place.
2. Please install the solar panel in the sun direction to avoid affecting the power generation efficiency.
3. Please ensure the installation is stable.

