



**EGE TECHNOLOGY SDN BHD** (201201031202)

We supplies wide range of High Quality Industrial & Commercial LED Lighting Products

# Company Profile

**(EGE TECH)** (formerly known as E-Green Energy was established in 2012) is an Industrial and Commercial Lighting Manufacturer and Distributor. We also provide consultancies for energy saving and energy efficient lighting.

Our company started with the sales and marketing of High and Low Frequency Electrodeless Energy Efficient Lighting Solutions. Later, we expanded our product range to include LED Lighting for Indoor, Outdoor and Landscape.

We guarantee that all our products are of superior quality in design, construction and performance that maintain high light output throughout their long service life.

Our company believes the key to a successful long-term partnership is build based on trust and responsibility in delivering our promises.

Users of our products are leading companies in Semiconductor, Automobiles, Food Industries, Supply Chain Warehouses, Universities, Steel Mills throughout Southeast Asia.

Our company is committed to promote and educate the world to “Save Energy , Save the Future” by choosing Energy Saving and Energy Efficient Products to preserve a better world for our future generations.



# LED Lighting Categories

High Bay

Flood Light

Street Lantern

Food Grade  
Lighting

Hi Mast  
Lighting

Canopy Lamp

Solar LED  
Street Lantern

Solar LED  
Flood Light

Tri Proof Lamp

LED T8 Tube

Explosion  
Proof Lighting

LED Hi Grow  
Lamp

# LED High Bay ~ Maxxpro RST

This Product has been tested and certified by SIRIM QAS International In compliance with MS IEC 60598-2-1:1997 , MS IEC 60598-1:2012.  
SIRIM Test Report No: 2019EB0378

## Features

- High performance, highly efficient, robust and low maintenance LED highbay luminaire.
- Heavy duty Die-cast aluminium housing & good heat dissipation.
- High Performance optical len and high-quality temper glass.
- Beam angle available: 60° , 90° & 120°
- High Luminous Efficacy > 150LM/W

Model	Voltage	Power	PF	Lumen	CCT	IP	Lifespan	Optional
MXP-HB060-RST	AC100~277V	60W	0.95	9000	6000K 4000K 3000K	65	50000 Hours	Dimming Motion Sensor
MXP-HB080-RST		80W		12000				
MXP-HB100-RST		100W		15000				
MXP-HB120-RST		120W		18000				
MXP-HB150-RST		150W		22500				
MXP-HB200-RST		200W		30000				
MXP-HB240-RST		240W		36000				

# LED High Bay ~ Maxxpro G10

## Applications:

**Widely used** in Commercial, factories, warehousing, sports complex. For mounting height from 6 to 20M

## Features

- Die-cast aluminium housing specifically designed for superior heat management
- High Performance optical made off high-quality pc (Polycarbonates) and iron free glass
- Highly efficient, low loss CB certified Drivers
- Multiple beam angle : 60° , 90° and 120°
- High Luminous Efficacy > 180LM/W
- Impact Protection : IK08

Model	Voltage	Power	PF	Lumen	CCT	IP	Lifespan	Optional
MXP-HB100-G10	AC100~277V	100W	0.95	18000	6000K 4000K 3000K	65	50000 Hours	Dimming Motion Sensor
MXP-HB150-G10		150W		27000				
MXP-HB200-G10		200W		36000				



**Designed for industrial areas where ambient temperature even up to 70°C**

## Features

- High performance, highly efficient, robust and low maintenance LED highbay luminaire.
- High Performance for warehouse heat resistance un to 70 ° C.
- High Luminous Efficacy > 165LM/W

Model	Voltage	Power	PF	Lumen	CCT	IP	Lifespan	Optional
EGE-HT31-100	AC220~240V	100W	0.95	16500	5000K 4000K 3000K	65	50000 Hours	N/A
EGE-HT31-120		120W		19800				
EGE-HT31-150		150W		24750				
EGE-HT31-200		200W		33000				



## Applications:

**Widely used in** Indoor and outdoor high ceiling application, warehouse, factory, industrial facility, exhibition, stadium etc.

## Features

- Specialized asymmetrical beam angle for aisles in warehouse
- IP65 waterproof chamber and IK10.
- Protect well in humid and vandal-proof required environment
- Beam angle available: 30x70° / 50x90° / 40x120° / 120° / 90° / Tilt 40°
- High Efficacy : 160LM/W



Model	Voltage	Power	PF	Lumen	CCT	IP	Lifespan	Optional
EGE-HC30A-100	AC120~240V, 50/60 Hz	100	0.95	16000	5000K 4000K 3000K	65	50000 Hours	Dimming Motion Sensor
EGE-HC30A-150		150		24000				
EGE-HC30A-200		200		32000				

# LED Linear High Bay~LHB09

**Special Designed for warehouse contain IP65/66 to prevent humid environment**

## Applications:

**Widely used in** Indoor and outdoor high ceiling application, warehouse, factory, industrial facility, exhibition, stadium etc.

## Features

- Specialized asymmetrical optic 40° \*140° for aisle, workshop and warehouse.
- Pendant mounting, pipe mounting for multiple installation.
- IP66 and IK10 rated & low UGR control
- Beam angle available: 60° / 90° / 28x85° / 60x120°
- High Efficacy : 155LM/W



LOW UGR

SMART CONTROL



Model	Voltage	Power	PF	Lumen	CCT	IP	Lifespan	Optional
EGE-LHB09-100	AC 200~240V	100W	0.91	15500	5000K 4000K 3000K	66	50000 Hours	Dimming Motion Sensor
EGE-LHB09-150		150W		23250				
EGE-LHB09-200		200W		31000				
EGE-LHB09-240		240W		37200				
EGE-LHB09-300		300W		46500				
EGE-LHB09-400		400W		62000				
EGE-LHB09-480		480W		74400				



# LED High Bay~Food Grade~ HB39

**Designed For Food Processing Lighting Applications  
Certified By NSF, ROHS, SAA, CE, CB & HACCP**

## Applications:

**Widely used** in food production industry, warehouse, exhibition hall etc.

## Features

- Ultra- High safety performance without glass or exposed screw.
- Multiple lighting distribution option, dotted lens with better glare control.
- Built-in motion sensor, more compact size
- Various accessories are available • IP66 & IP69K/IK08 double protection
- Beam angle available: 60° & 90° & 120°
- Light efficiency > 140LM/W



Model	Voltage	Power	PF	Lumen	CCT	IP	Lifespan	Optional
EGE-HB39-100	AC100~240V	100W	0.95	14000	5000K 4000K 3000K	66 & 69K	50000 Hours	Dimming Motion Sensor
EGE-HB39-120		120W		16800				
EGE-HB39-150		150W		21000				



# LED Linear Light~Food Grade ~LHB19

**Special designed For Food Production Industry**

## Applications:

**Widely used** in food production industry, interior lighting, hotel, shopping mall etc.

## Features

- Equiv. to 300W Metal Halide lamps.
- Red and Blue color options are available for difference application..
- Built in power supply
- Multiple Beam angle for difference application.
- High Luminous Efficacy > 135LM/W



Model	Voltage	Power	PF	Lumen	CCT	IP	Lifespan	Optional
EGE-LHB19-070	AC100~240V	70W	0.95	9450	5000K 4000K 3000K	66 & 69K	50000 Hours	N/A
EGE-LHB19-120		120W		16200				

# LED High Bay~Food Grade~ HBF

**Designed For Food Processing Lighting Applications**  
**Certified By NSF International as: NSF/ANSI**  
**Standard 2 ~ Food Equipment.**



## Features

- Ultra- High safety performance without glass or exposed screw.
- High performance, highly efficient, robust and low maintenance LED highbay luminaire.
- Heavy duty Die-cast aluminium housing & good heat dissipation
- High Performance & Quality Polycarbonet optical len.
- Beam angle available: 60 & 90 & 120°
- High Luminous Efficacy > 140LM/W

Model	Voltage	Power	PF	Lumen	CCT	IP	Lifespan	Optional
EGE-HBF-P100	AC100~277V	100W	0.95	14000	6000K 4000K 3000K	66	50000 Hours	N/A
EGE-HBF-P120		120W		16800				
EGE-HBF-P150		150W		21000				
EGE-HBF-P200		200W		28000				

# LED High Bay~ Food Grade~ HB21

**Special designed For Food Production Industry**

## Applications:

Widely used in Food Processing Plants, Warehouse, Factories, Pharmaceutical Manufacturing Facilities, Beverage Processing and etc

## Features

- Cost-effective 140lm/W with 100W, 120W, 150W, 200w, 240W
- Smooth body with no exposed screws, greatly diminishing dust and water accumulation..
- NSF, IP66, IP69K, suitable for food-processing applications.
- PC reflector, aluminum reflector and wire guard available
- Easy and reliable installation. All fixtures come with safety cable.



Model	Voltage	Power	PF	Lumen	CCT	IP	Lifespan	Optional
EGE-HB21-100	AC100~277V	100W	0.92	14000	5000K 4000K 3000K	66	50000 Hours	Dimming Motion Sensor
EGE-HB21-120		120W		16800				
EGE-HB21-150		150W		21000				
EGE-HB21-200		200W		28000				
EGE-HB21-240		240W		36000				





## Asymmetric Flood Light ~ FL24 Anti- Corrosion Marina Used

### Applications:

Widely used in boats, ports, docking area, swimming pools, general sports field close to the coastline, parking lots, industrial area

### Features

- Optic system- ONE-SHEET lens easy to be exchanged, and it covered by tempered glass avoids getting yellowing.
- Mechanical housing -Pressure die-cast ALU by electrophoresis + special powder coating.
- Metallic parts - Screws all made by aianticorrosive material, surface treated by GEOMET or Dacromet technology, Chrome-free.
- Mounting bracket- Top-quality anticorrosive material with special powder coating.
- Beam angle available 25° / 60° / 26\*60° / 55\*125°
- High Luminous Efficacy > 140LM/W

Model	Voltage	Power	PF	Lumen	CCT	IP	Lifespan	Optional
EGE-FL24-50- ACM	AC220~240V	50W	0.95	.7000	3000K 4000K 5000K	66	50000Hours	N/A
EGE-FL24-100- ACM		100W		14000				
EGE-FL24-150- ACM		150W		21000				
EGE-FL24-200- ACM		200W		.28000				
EGE-FL24-300- ACM		300W		42000				



**NEW!**  
**150LM/W**



## LED Flood Light ~ JX3

### Applications:

**Widely used** in Exhibition Hall, Car Park, Playground, Billboard, Building Façade and Public Corridor, Stair Corridor etc.

### Features

- High efficiency lighting distribution curve technology, Nickel plated reflector to optimize the light effects.
- Ultra-slim sleek design, stylish, classic and light weight.
- High Strength aluminum material, powder coating surface finishing of self cleaning and anti corrosion.
- Integrated housing design with aluminum fitting to allow for excellent heat Dissipation.
- Professional optical design, High performance luminous efficacy.
- Innovative G-buckle technology to ensure temper glass is proper contact and tied with the silicone ring.
- Beam angle available: 30° / 60° / 90° / 120°
- High Luminous Efficacy > 150LM/W

Model	Voltage	Power	PF	Lumen	CCT	IP	Lifespan	Optional
EGE-FL050-JX3	AC100~277V	50W	>0.93	7500	6000K 4000K 3000K	66	50000 Hours	Dimming
EGE-FL100-JX3		100W		15000				
EGE-FL150-JX3		150W		22500				
EGE-FL200-JX3		200W		30000				
EGE-FL300-JX3		300W		45000				

## Asymmetric Flood Light ~ FL23

### Applications:

**Widely used** in Exhibition Hall, Car Park, Playground, Billboard, Building Façade Stadium, tennis etc.

### Features

- High performance, highly efficient, robust and low maintenance LED highbay luminaire.
- Heavy duty Die-cast aluminium housing & good heat dissipation.
- High Performance asymmetric optical len and IK08 temper glass.
- Beam angle available 25° / 60° / 26\*60° / 55\*125°
- High Luminous Efficacy > 150LM/W



Model	Voltage	Power	PF	Lumen	CCT	IP	Lifespan	Optional
EGE-FL050-FL23	AC100~277V	50W	0.95	7500	3000K 4000K 6000K	66	50000Hours	Dimming Motion Photocell Sensor
EGE-FL100-FL23		100W		15000				
EGE-FL150-FL23		150W		22500				
EGE-FL200-FL23		200W		30000				
EGE-FL300-FL23		300W		45000				

# LED Flood Light ~ XHL

## Applications:

**Widely used** in Car Park, Playground, Billboard, Building Façade and Public Corridor, Football & basketball field etc.

## Features

- High performance, highly efficient, robust and low maintenance LED highbay luminaire.
- Heavy duty Die-cast aluminium housing & good heat dissipation.
- High Performance optical len and high-quality temper glass.
- Beam angle available: 25° 60°, 90°, 120° 136°\*78°
- High Luminous Efficacy > 150LM/W



Model	Voltage	Power	PF	Lumen	CCT	IP	Lifespan	Optional
MXP-FL050-XHL	AC100~277V	50W	0.97	7500	6000K 4000K 3000K	65	50000 Hours	Dimming
MXP-FL100-XHL		100W		15000				
MXP-FL150-XHL		150W		22500				
MXP-FL200-XHL		200W		28000				
MXP-FL250-XHL		250W		35000				
MXP-FL300-XHL		300W		45000				



# LED HiMast ~ YYL

## Applications:

**Widely used** in Car Park, Playground, Billboard, Building Façade, Airport, Port Football & basketball field etc.

## Features

- High Strength aluminum material, surface treatment finishing of self cleaning and anti corrosion.
- Heavy duty Die-cast aluminium housing & good heat dissipation.
- High Performance optical len and high-quality temper glass.
- Beam angle: 10°, 25°, 60°, 120 X 90°.
- High Luminous Efficacy > 140LM/W

Model	Voltage	Power	PF	Lumen	CCT	IP	Lifespan	Optional
EGE-FL400-YYL	AC100~277V	400W	0.95	56000	6000K 4000K 3000K	65	50000 Hours	N/A
EGE-FL800-YYL		800W		112000				
EGE-FL1200-YYL		1200W		168000				



Stadium



Racecourse



Square



Airport



Parkinglot



Intersection



Recreational sports



Container terminal

## LED Spot Light/ HiMast Light ~ PHM01A

### Applications:

**Widely used in** Car Park, Building Façade, Airport, Port Football & basketball field, Indoor and Outdoor Stadium & etc

### Features

- Die-cast aluminium EN 44300 with very low copper and anti-corrosion treatment for maximum resistance in harsh environments.
- High Performance optical len and high-quality temper glass.
- Beam angle: 35°/100°, 30°, 45°, 60°
- High Luminous Efficacy > 140 / 150LM/W

**New Product**

Model	Voltage	Power	PF	Lumen	CCT	IP	Lifespan	Optional
EGE-PHM01A-0400	AC100~420V	400W	≥0.96	56000/60000	3000K 4000K 5000K	66	50000 Hours	N/A
EGE-PHM01A-0500		500W		70000/75000				
EGE-PHM01A-0600		600W		84000/90000				
EGE-PHM01A-0800		800W		112000/120000				
EGE-PHM01A-1000		1000W		140000/150000				
EGE-PHM01A-1200		1200W		168000/180000				
EGE-PHM01A-1500		1500W		210000/225000				
EGE-PHM01A-1800		1800W		252000/270000				

# LED HiMast~Spotlight ~ FL47



## Applications:

**Widely used** in Football, Basketball and Indoor Stadium, Playground, Building Façade, Port etc.

## Features

- One SKU for two applications
- Seamless link between aerometal materials and numerous
- Heat sink vents to improve thermal management and guarantee the stability of lighting system
- Superior BUG Control
- High Brightness at >130 LM/W or 160 LM/W

Model	Voltage	Power	PF	Lumen	CCT	IP	Lifespan	Optional
EGE-SPL-480-FL47	AC 100~277V	480W	0.95	62400~76800	5000K	66	50000 Hours	Dimming
EGE-SPL-600-FL47		600W		78000~96000	4000K 3000K			

# LED HiMast ~ Y09



## Applications:

**Widely used** in Football, Basketball and Indoor Stadium, Playground, Building Façade, Port etc.

## Features

- High Strength aluminum material, surface treatment finishing of self cleaning and anti corrosion
- Integrated housing design with aluminum module heat sink to allow for excellent heat Dissipation.
- Power range available from 500W ~ 1500W & Multiple Beam angle for different application.
- High Brightness at >150 LM/W with Original Osram / Cree Chips, certified LM80 & TM-21 is available

Model	Voltage	Power	PF	Lumen	CCT	IP	Lifespan	Optional
EGE-HM500-Y09	AC100~277V	500W	0.95	75000	6000K 4000K 3000K	66	50000 Hours	N/A
EGE-HM750-Y09		750W		112500				
EGE-HM1000-Y09		1000W		150000				
EGE-HM1250-Y09		1250W		187500				
EGE-HM1500-Y09		1500W		225000				



## Applications:

**Widely used** in Building Façade, Airport, Port, Highway, Football & basketball field and Indoor, Outdoor stadium etc.

## Features

- High Strength aluminum material, surface treatment finishing of self cleaning and anti corrosion.
- Heavy duty Die-cast aluminium housing & good heat dissipation.
- High Performance optical len and high-quality temper glass.
- Beam angle: 10, 15, 15\*40, 30, 45, 60°, Type III.
- High Luminous Efficacy > 125/140LM/W



Model	Voltage	Power	PF	Lumen	CCT	IP	Lifespan	Optional
EGE-HM200-FL31	AC100~277V	200W	≥0.92	25000/28000	4000K 5000K	66	50000 Hours	Dimmable DALI, DMX
EGE-HM400-FL31		400W		50000/56000				
EGE-HM600-FL31		600W		75000/84000				

# LED HiMast Light ~ FL28



## Applications:

**Widely used** in Car Park, Building Façade, Airport, Port Football & basketball field, Indoor and Outdoor Stadium.

## Features

- High Strength aluminum material, surface treatment finishing of self cleaning and anti corrosion.
- Heavy duty Die-cast aluminium housing & good heat dissipation.
- High Performance optical len and high-quality temper glass.
- Beam angle: 12, 30, 40, 60, 26\*110, 14\*108, 38\*108°
- High Luminous Efficacy > 140 / 160LM/W



Model	Voltage	Power	PF	Lumen	CCT	IP	Lifespan	Optional
EGE-HM600-FL28	AC100~277V	600W	≥0.92	84000/96000	3000K 5000K	66	50000 Hours	Dimmable DALI, DMX
EGE-HM800-FL28		800W		112000/128000				
EGE-HM1000-FL28		1000W		140000/160000				
EGE-HM1200-FL28		1200W		168000/192000				





# LED Street Light ~ ST53

## Applications:

**Widely used** in Parking Lot, Coastal Road, Highway etc.

## Features

- High performance, highly efficient, robust and low maintenance LED high bay luminaire.
- Innovative design sperate LED module from driver to enhances good heat dissipation.
- Smooth surface design avoids accumulates dust, sand, snow, water and leaves.
- High Luminous Efficacy > 160LM/W & multiple beam angel available for difference application

Model	Voltage	Power	PF	Lumen	CCT	IP	Lifespan	Optional
EGE-ST53-020	AC 100~240V	20W	0.94	3200	5000K 4000K 3000K	66	50000 Hours	Dimming Motion Sensor Photocell PIR Sensor DALI ZHAGA
EGE-ST53-030		30W		4800				
EGE-ST53-040		40W		6400				
EGE-ST53-060		60W		9600				
EGE-ST53-075		75W		12000				
EGE-ST53-100		100W		16000				
EGE-ST53-120		120W		19200				
EGE-ST53-150		150W		24000				
EGE-ST53-180		180W		28800				

# LED Street Light ~ ST59



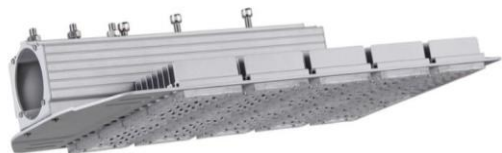
## Applications:

**Widely used** in Road lighting Car Park, Playground etc.

## Features

- High Strength aluminum material, surface treatment finishing.
- Heavy duty Die-cast aluminium housing & good heat dissipation.
- High Performance optical Polycarbonate Len.
- High Luminous Efficacy > 150LM/W

Model	Voltage	Power	PF	Lumen	CCT	IP	Lifespan	Optional
EGE-ST59-055	AC 120~277V	55W	0.94	8250	5000K 4000K 3000K	66	50000 Hours	Dimming Photocell
EGE-ST59-075		75W		11250				
EGE-ST59-100		100W		15000				
EGE-ST59-120		120W		18000				
EGE-ST59-150		150W		22500				
EGE-ST59-180		180W		27000				



## Applications:

**Widely used** in Road lighting Car Park, Playground etc.

## Features

- High Strength aluminum material, surface treatment finishing.
- Heavy duty Die-cast aluminium housing & good heat dissipation.
- High Performance optical Polycarbonate Len.
- Beam angle: 120 X 80°.
- High Luminous Efficacy > 130LM/W

Model	Voltage	Power	PF	Lumen	CCT	IP	Lifespan	Optional
MXP-SL050-RST-F	AC220~240V	50W	0.95	6500	5000K 4000K 3000K	65	50000 Hours	N/A
MXP-SL080-RST-F		80W		10400				
MXP-SL100-RST-F		100W		13000				
MXP-SL120-RST-F		120W		15600				
MXP-SL150-RST-F		150W		19500				
MXP-SL200-RST-F		200W		26000				

# LED Canopy Lamp ~ CP01

## Applications:

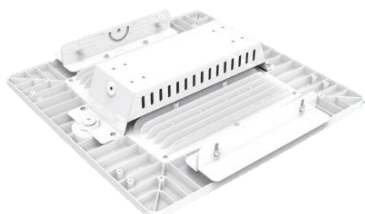
**Widely used** in Clean Room, Food processing, Gas station light etc

## Features

- High performance, highly efficient, robust and low maintenance Canopy Lamp.
- Aluminum die-casting heat sink comes with light weight but excellent thermal management performance
- Glass version, when with a built-in dip switch
- Plug-and-play Microwave and PIR sensor control make it more energy-saving
- High Luminous Efficacy > 150LM/W
- Beam angle 90° & 120°



Model	Voltage	Power	PF	Lumen	CCT	IP	Lifespan	Optional
EGE-CP01-75	AC120~240V	75W	0.95	11250	6000K 4000K 3000K	65	50000 Hours	Microwave PIR Sensor
EGE-CP01-100		100W		15000				
EGE-CP01-120		120W		18000				



# LED Canopy Lamp ~ CL01

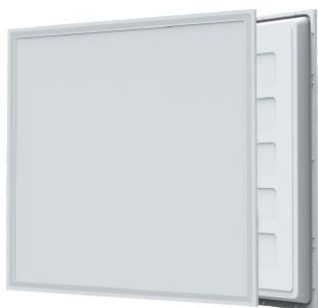
## Applications:

Widely used in Petrol Station, Cool Room etc.

## Features

- 80W to 200W capacity
- Integral LED Meanwell ELG series control gear
- Durable die-cast aluminium face profile
- Stylish white powder coat finish
- Plug and play sensor for option
- Five installation options, recessed surface mounth, large adaptor plate for retrofit applications, bracket mount and pipe mount
- Certified CE,CB,SAA,C-tick,ROHS
- High Luminous Efficacy > 150LM/W

Model	Voltage	Power	PF	Lumen	CCT	IP	Lifespan	Optional
EGE-CPL100-CL01	AC90~305V	100W	0.95	15000	6000K 5700K 5000K 4000K	65	50000 Hours	N/A
EGE-CPL150-CL01		150W		22500				
EGE-CPL200-CL01		200W		30000				



# LED Panel Light ~ PNL

## Applications:

Widely used in office, Production Floor etc.

## Features

- Recessed and Surface mounted optional available.
- One piece forming back plate has better heat dissipation.
- Easy installation and low Maintenance.
- High Performance optical len that provides uniform light distribution..
- Beam angle 110°
- High Luminous Efficacy > 100LM/W

Model	Voltage	Power	PF	Lumen	CCT	IP	Lifespan	Optional
EGE-PNL22-P040	AC100~277V	40W	0.9	4000	6000K	20	25000 Hours	N/A
EGE-PNL14-P048		40W		4000	4000K			
EGE-PNL24-P072		72W		7200	3000K			

## New Product



### Applications:

**Widely used** in Food processing Industries, Cool room, Corridor etc.

### Features

- Products compliance with international safety standards with protective circuit..
- Tri Proof ~ IP65 rated with weatherproof, dust proof & anti corrosion.
- Customized Plastic Frosted housing, resist high impact, soft lighting, no glare.
- Elegant appearance, fashionable, easy installation.
- Beam angle available: 120°
- High Luminous Efficacy > 130LM/W

Model	Voltage	Power	PF	Lumen	CCT	IP	Lifespan	Optional
EGE-TRF-P036-HL	AC100~240V	36W	0.90	4680	6500K 4000K 3000K	65	35000 Hours	N/A

# LED Tri-Proof ~ TRP (PV)

## Applications:

Widely used in Food processing Industries, Cool room, Corridor etc.

## Features

- High performance, highly efficient, robust and low maintenance LED Tri Proof Liner luminaire.
- Heavy Duty Polycarbonet housing & good heat dissipation.
- Customized Plastic Frosted housing, resist high impact, soft lighting, no glare.
- Elegant appearance, fashionable, easy installation.
- Beam angle available: 180°
- High Luminous Efficacy > 130LM/W



Model	Voltage	Power	PF	Lumen	CCT	IP	Lifespan	Optional
EGE-TRP-P018-PV	AC100~240V	18W	0.90	2340	6500K 4000K 3000K	66	50000 Hours	Dimming Motion Sensor
EGE-TRP-P036-PV		36W		5200				

# LED Tri-Proof ~TPL

## Applications:

Widely used in Food processing Industries, Cool room, Corridor etc.

## Features

- High performance, highly efficient, robust and low maintenance LED Tri proof Liner luminaire.
- Heavy duty Die-cast aluminium housing & good heat dissipation.
- The anodic oxidation treatment fitting with strong corrosion resistance.
- Aluminum cooling efficiency + PC lampshade high light transmittance.
- Beam angle 120°
- High Luminous Efficacy > 130LM/W



Model	Voltage	Power	PF	Lumen	CCT	IP	Lifespan	Optional
EGE-TPL020-LT06	AC100~240V	20W	0.95	2600	6000K 4000K 3000K	65	50000 Hours	Dimming Motion Sensor
EGE-TPL040-LT12		40W		5200				
EGE-TPL050-LT12		50W		6500				
EGE-TPL060-LT15		60W		7500				



CE RoHS

## LED T8 Tube ~ BA210

### Applications:

**Widely used** Indoor Lighting, Office, Walkway, Corridor, Parking Area, Factory, Mall etc.

### Features

- Plastic (PC) Tube ~ High transparent ratio, uniform light beam, safety and no electric shock.
- Customized Plastic Frosted housing, resist high impact, soft lighting, no glare.
- Good heat dissipation and Long lifespan.
- Elegant appearance, fashionable, easy installation and wide beam angle 210°
- Rational construction & better structural strength, ensure no damage during transportation.
- Certified by CE, EMC, LVD, RoHS.
- Green environmental protection, lead-free material meet the requirements of ROHS.

Model	Voltage	Power	PF	Lumen	CCT	IP	Lifespan	Optional
LED-T8G13-P08-BA210	AC170~260V	8W	0.95	>1250	6500K	20	40000 Hours	N/A
LED-T8G13-P16-BA210		16W		>2500				

## LED T8 Tube ~Retrofit (ALP)

### Applications:

**Widely used** Indoor Lighting, Office, Walk Way, Corridor Lighting, Parking Area, Factory & Mall.

### Features

- Customized Aluminium & Polycarbonates frosted housing, resist high impact, soft lighting, no glare.
- Good heat dissipation and Long lifespan.
- Elegant appearance, fashionable, easy installation & wide beam angle 160°
- Rational construction & better structural strength, ensure no damage during transportation.
- Certified CE, EMC, LVD, RoHS.
- Special encapsulating LED chip and thermal dispatching design, low lumen decay, colour temperature consistent.
- High Lumens output  $\geq 115$  LM/W.



CE RoHS

Model	Voltage	Power	PF	Lumen	CCT	IP	Lifespan	Optional
LED-T8G13-P09-ALP	AC170~265V	9W	0.9	1050	6500K	20	30000 Hours	N/A
LED-T8G13-P18-ALP		18W		2100				





# Ex~Proof LED High Bay~ GB

## Application:

**Widely used in** Petroleum, Chemical Industry, Natural Gas, Electrical Power Plant, Ship, Warehouse and Other Indoor and Outdoor Lighting.

## Features

- LED Explosion Proof and Hazardous Proof LED High Bay
- Heavy duty Die-cast aluminium housing & good heat dissipation.
- High Performance optical len and high-quality tempered glass.
- Beam angle available: 90°
- High Luminous Efficacy > 130LM/W



Ex db op is IIC T4...T5...T6 Gb;  
Ex tb op is IIIC T103° ...T98° ...T93° C Db  
Certificate Number: IECEx SEV 19.0040X



ATEX Ex II 2G Ex db op is IIC T4...T5...T6 Gb;  
ATEX Ex II 2D Ex tb op is IIIC T103°C...T98°C...T93°C Db;  
Certificate Number: SEV 19ATEX 0334 X

Model	Voltage	Power	PF	Lumen	CCT	IP	Lifespan	Optional
CES-EX-GB-100	AC100~277V	100W	0.95	13000	6000K 4000K 3000K	66	50000 Hours	N/A
CES-EX-GB-120		120W		15600				
CES-EX-GB-150		150W		19500				
CES-EX-GB-185		185W		22000				
CES-EX-GB-200		200W		24000				



# Ex~Proof LED Low Bay~ GB-02

## Application:

**Widely used in** Wastewater treatment, oil and gas, drilling rings, offshore, chemical , food, Pharmaceutical plant, food & beverage facilities, flammable vapors, gases etc

## Features

- Patent designed to be Curved Fin Shape to maximize best heat transmit
- Housing- Aluminum alloy (ADC12)
- LED: LM80 certified, high efficacy, low decay, long lifespan. 130lm/W $\pm$ 5, up to 26000lm
- Lens-tempered glass (8mm -10mm) shock & vibration resistant, Super clear, >90% driver efficacy
- Circuit design: 4KV/6KV Surge Protection power supply & High Luminous Efficacy > 130LM/W



US: UL 844; UL 1598;  
Canada: CSA C22.2 No. 137; CSA C22.2 No. 250.0;



ATEX Certificate No: UL 22 ATEX 2543X  
ATEX Certificate No: UL 22 ATEX 2544X



IECEX Certificate No : IECEx UL 22.0091X

Model	Voltage	Power	PF	Lumen	CCT	IP	Lifespan	Optional
CES-EX-GB-02-40	AC100~277V	40W	0.95	5200	6500K 5000K 3000K	66	50000 Hours	N/A
CES-EX-GB-02-50		50W		6500				
CES-EX-GB-02-60		60W		7800				
CES-EX-GB-02-80		80W		10400				

# Ex~Proof LED Flood Light~ J



## Application:

**Widely used in** Petroleum, Chemical Industry, Natural Gas, Electrical Power Plant, Ship, Tunnel, Warehouse and Other Indoor and Outdoor Lighting.

## Features

- High performance, highly efficient, robust and low maintenance LED Flood Light luminaire.
- Heavy duty Die-cast aluminium housing & good heat dissipation.
- High Performance optical len and high-quality temper glass.
- Beam angle 120° optional with reflector 60° & 90° angle.
- High Luminous Efficacy > 130LM/W



Ex db op is IIC T4...T5...T6 Gb;  
Ex tb op is IICT103° ...T98° ...T93° C Db  
Certificate Number: IECEX SEV 19.0040X



ATEX Ex II 2G Ex db op is IICT4...T5...T6 Gb;  
ATEX Ex II 2D Ex tb op is IIC T103°C...T98°C...T93°C Db;  
Certificate Number: SEV 19ATEX 0334 X

Model	Voltage	Power	PF	Lumen	CCT	IP	Lifespan	Optional
CES-J060	AC100~277V	60W	0.95	7800	6000K 4000K 3000K	66	50000 Hours	N/A
CES-J080		80W		10400				
CES-J100		100W		13000				
CES-J120		120W		15600				
CES-J150		150W		19500				
CES-J180		180W		23400				
CES-J200		200W		26000				



# Ex~Proof Flood Light~ KLE1027

## Application:

**Widely used in** Petroleum, Chemical Industry, Natural Gas, Electrical Power Plant, Ship, Tunnel, Warehouse and Other Indoor and Outdoor Lighting.

## Features

- Double cable entry design, make the installation and configuration are more reasonable.
- Tempered glass, high light transmittance and impact resistance.
- SUS304 stainless steel fasteners, better corrosion resistance.
- Beam angle available: 60° , 90° & 120°
- High Luminous Efficacy > 110LM/W



Ex db eb IIB+H2 T6...T5 Gb  
Ex tb IIC T80° C...T95° C Db  
Certificate Number: IECEX LCIE 21.0009X



II 2 G Ex db eb IIB+H2 T6...T5 Gb (1)  
II 2 D Ex tb IIC T80° C...T95° C Db (1)  
-40° C ≤ Ta ≤ +50° C  
LCIE 21 ATEX 3003 X

Model	Voltage	Power	PF	Lumen	CCT	IP	Lifespan	Optional
KLE1027U50	AC100~277V	50W	0.95	6100	6000K 4000K 3000K	66	50000 Hours	N/A
KLE1027U100		100W		12800				
KLE1027U150		150W		17550				
KLE1027U200		200W		23400				



# Ex~Proof LED Portable Lamp~ SC

## Application:

**Widely used in** Petroleum, Chemical Industry, Natural Gas, Electrical Power Plant, Ship, Tunnel, Warehouse and Other Indoor and Outdoor Lighting.

## Features

- High performance, highly efficient, robust and low maintenance LED Portable Hand Lamp luminaire.
- Heavy duty ADC 12 Die-cast aluminium housing & good heat dissipation.
- 10mm Thickness High Performance optical len and high-quality temper glass.
- Beam angle available: 270° & High Luminous Efficacy > 130LM/W



Ex db eb IIC T6 Gb

Ex tb IIIC T80 °C Db

Certificate Number: IECEx SEV 20.0003X



II2G Ex db eb IIC T6 Gb

II2D Ex tb IIIC T80°C Db

Certificate Number: SEV 20 ATEX 3009 X

Model	Voltage	Power	PF	Lumen	CCT	IP	Lifespan	Optional
CES-EX-SC10	AC110~277V	10W	0.95	1300	6000K 4000K 3000K	66	50000 Hours	N/A
CES-EX-SC20		20W		2600				
CES-EX-SC30		30W		3900				



# Ex~Proof LED Linear ~ LN-02P

## Application:

**Widely used in** Petroleum, Chemical Industry, Natural Gas, Electrical Power Plant, Ship, Tunnel, Warehouse, Indoor and Outdoor Lighting.

## Features

- High Quality Die-Casting Aluminum ADC 12 & 6063 Housing with Corrosion Proof Coated.
- High Reliability and Long lifespan LED HLG Series Driver From Meanwell Taiwan.
- High Quality from Seoul Semiconductor LM 80 certified LED Chip.
- High Light transmission temper glass 10mm Len with rated IK 08.
- High Luminous Efficacy 120~140LM/W



Ex eb mb IIC T5 Gb

Ex tb IIIC T75 °C Db

Certificate Number: IECEx SEV 21.0038X



ATEX Ex II 2G Ex eb mb is IICT5 Gb;

ATEX Ex II 2D Ex tb IIIC T75°C Db

Certificate Number: SEV 21 ATEX 0578 X

Model	Voltage	Power	PF	Lumen	CCT	IP	Lifespan	Optional
CES-EX-LN-02P-30B	AC100~277V	30W	≥0.95	4200	6000K 4000K 3000K	66	50000 Hours	Emergency Backup
CES-EX-LN-02P-40B		40W		5600				
CES-EX-LN-02P-50B		50W		7000				
CES-EX-LN-02P-40C		40W		5600				
CES-EX-LN-02P-50C		50W		7000				
CES-EX-LN-02P-60C		60W		8400				
CES-EX-LN-02P-70C		70W		9800				
CES-EX-LN-02P-40D		40W		5600				
CES-EX-LN-02P-50D		50W		7000				
CES-EX-LN-02P-60D		60W		8400				
CES-EX-LN-02P-70D		70W		9800				
CES-EX-LN-02P-80D		80W		11200				
CES-EX-LN-02P-100D		100W		14000				

# Ex~Proof LED Linear ~ LN

## Application:

**Widely used in** Petroleum, Chemical Industry, Natural Gas, Electrical Power Plant, Ship, Tunnel, Warehouse, Indoor and Outdoor Lighting.

## Features

- High Quality Die-Casting Aluminum ADC 12&6063 Housing with Corrosion Proof Coated.
- High Reliability and Long lifespan LED HLG Series Driver From Meanwell Taiwan.
- High Quality from Seoul Semiconductor LM 80 certified LED Chip.
- High Light transmission temper glass 10mm Len with rated IK 08.
- High Luminous Efficacy 120LM/W



Ex db op is IIC T5...T6 Gb;  
Ex tb op is IIC T94° C ...T89° C...T84° Db  
Certificate Number: IECEx SEV 19.0040X



ATEX Ex II 2G Ex db op is IIC T5...T6 Gb;  
ATEX Ex II 2D Ex tb op is IIC T94°C...T89°C...T84°C Db  
Certificate Number: SEV 19ATEX 0332 X

Model	Voltage	Power	PF	Lumen	CCT	IP	Lifespan	Optional
CES-EX-LN-060	AC100~277V	60W	0.95	7200	6000K 4000K 3000K	66	50000 Hours	N/A
CES-EX-LN-100		100W		12000				
CES-EX-LN-150		150W		18000				
CES-EX-LN-200		200W		24000				
CES-EX-LN-240		240W		28800				

# Ex~Proof LED Linear ~ KLE1011

## Application:

**Widely used in** Petroleum, Chemical Industry, Natural Gas, Electrical Power Plant, Ship, Tunnel, Warehouse and Other Indoor and Outdoor Lighting.

## Features

- Low- Profile, lightweight design , high quality aluminum housing.
- Impact resistant diffused lens with bayer original material.
- Beam angle 110° .
- High Luminous Efficacy > 120LM/W



ATEX Ex II 2G Ex mb op is IIC T5...T6 Gb;  
ATEX Ex II 2D Ex tb op is IIC T80°C Db  
Certificate Number: LCIE 20ATEX 3006 X

## Compliance with:

EN IEC 60079-0:2018 ; EN 60079-7:2015+A1:2018 ;  
EN 60079-18:2015+A1:2017 ; EN 60079-28:2015 ;  
EN 60079-31:2014

Model	Voltage	Power	PF	Lumen	CCT	IP	Lifespan	Optional
EGE-KLE1011-24	AC100~277V	24W	0.95	2700	6000K 4000K 3000K	66	50000 Hours	N/A
EGE-KLE1011-36		36W		4200				
EGE-KLE1011-50		50W		6250				
EGE-KLE1011-60		60W		7380				
EGE-KLE1011-72/ EGE-KLE1011-80		72W/ 80W		8420/ 9120				



## Application:

**Widely used** in Chemical Industry, Natural Gas, Electrical Power Plant, Tunnel, Warehouse, Indoor and Outdoor Lighting, hazard location.

## Features

- Available from 80W (9, 200lm )
- Offered with 3 mounting options: U-bracket, wall mount, slip fitter mount
- Type II, III, IV, V and Forward Throw distributions
- 1-10V Dimming, available
- High Luminous Efficacy 115LM/W
- Certified UL, CUL, DLC, PSE, SAA&C-TICK, CQC, CE, ROHS



20151023-E475887  
E475887-20151022

Model	Voltage	Power	PF	Lumen	CCT	IP	Lifespan	Optional
CES-L80	AC100~277V	80W	0.98	9200	5000K 4000K 3000K	67	50000 Hours	Motion sensor Photocell Controller Dimming

## Solar LED Street Light~ISL ( All In One)



## Applications:

**Widely used** in community park, urban road, garden, car park, factory, walkway, residential lighting etc.

## Features:

- **Integrated design:** battery, controller and Led Lamp all in one body housing.
- **Three Smart Mode:** PIR sensor / Time control, / PIR + Time control
- **Battery:** High performance Lithium iron phosphate battery (LiFePO4).
- **Suitable height:** 6 to 12 meter
- **Solar Panel:** Monocrystalline Silicon Solar Cell.

Model	Solar Panel	Battery	Power	CCT	IP	Lifespan	Control
EGE-ISL 240-60	18V / 70W	12.0V / 30AH	40W	3000K 4000K 5000K	66	50000 Hours	PIR Motion Sensor Timer
EGE-ISL 260-90	18V / 90W	12.8V / 36AH	60W				
EGE-ISL 280-100	18V / 100W	12.8V / 60AH	80W				
EGE-ISL 2100-120	18V / 120W	12.8V / 78AH	100W				
EGE-ISL 2120-130	18V / 130W	12.8V / 88AH	120W				





**The features of this solar street light is an ALL-IN-ONE design**

## Applications:

**Widely used** in community park, urban road, garden, car park, factory, walkway, residential lighting etc.

## Features:

- Fully programmable via solar controller and photo control
- Built-in battery and solar controller
- Advanced new LiFePO4 battery lasts at least 2000 charge cycles and will last three nights with one day charge
- Perfect for street, parks, parking lots, school campuses, etc.
- High Luminous Efficacy , LED =160LM/W

Model	Solar Panel	Battery	Power	CCT	IP	Lifespan	Control
EGE-SSL 050-0911A	18V / 36W	12.8V / 18AH	50W	6000K	65	50000 Hours	Microwave motion sensor Light control Timer control
EGE-SSL 100-0911B	18V / 45W	12.8V / 30AH	100W				
EGE-SSL 150-0911C	18V / 65W	12.8V / 42AH	150W				
EGE-SSL 200-0911D	18V / 88W	12.8V / 54AH	200W				
EGE-SSL 250-0911E	18V / 100W	12.8V / 60AH	250W				
EGE-SSL 300-0911F	16.5V / 130W	12.8V / 72AH	300W				

# Solar LED Street Light ~ 0310



## Applications:

**Widely used** in community park, urban road, garden, car park, factory, walkway, residential lighting etc.

## Features:

- **Integrated design:** battery, controller and Led Lamp all in one body housing.
- **Three Smart Mode:** PIR sensor / Time control, / PIR + Time control
- **Battery:** High performance Lithium iron phosphate battery (LiFePO4).
- **Suitable height:** 6 to 12 meter
- **Solar Panel:** Monocrystalline Silicon Solar Cell.

Model	Solar Panel	Battery	Power	CCT	IP	Lifespan	Control
EGE-0310C 060-ALT	16V / 36W	12.8V / 24AH	60	6000K 4000K 3000K	65	50000 Hours	PIR Motion Sensor Timer
EGE-0310D100-ALT	16V / 48W	12.8V / 42AH	100				
EGE-0310E150-ALT	18V / 85W	12.8V / 54AH	150				





## Solar LED Street Light~0335 ( 2 In 1 )

**The features of this solar street light is an 2 IN 1 design**

### Applications:

**Widely used** in community park, urban road, garden, car park, factory, walkway, residential lighting etc.

### Features:

- Fully programmable via solar controller and photo control
- Built-in battery and solar controller
- Advanced new LiFePO4 battery lasts at least 2000 charge cycles and will last three nights with one day charge
- Perfect for street, parks, parking lots, school campuses, etc.
- High Luminous Efficacy , LED =160LM/W



Model	Solar Panel	Battery	Power	CCT	IP	Lifespan	Control
EGE-SFL-0335-060	18V / 64W	12.8V / 36AH	60W	6000K	65	50000 Hours	Timer
EGE-SFL-0335-120	18V / 90W	12.8V / 48AH	120W				
EGE-SFL-0335-180	18V / 120W	12.8V / 54AH	180W				
EGE-SFL-0335-240	18V / 150W	12.8V / 60AH	240W				

# LED Solar Flood Light ~ SW

## Application :

**Widely used** in community park, urban road, garden, car park, factory, walkway, residential lighting etc



## Features:

- **Integrated design:** battery, controller and Led Lamp all in one body housing.
- **Smart Mode:** Pre-set time control.
- **Battery:** High performance Lithium iron phosphate battery (LiFePO4).
- **Suitable height:** 6 to 12 meter

Model	Solar Panel	Battery	Power	Lumen	CCT	IP	Lifespan	Control
EGE-SFL200-SW6	18V / 60W	3.2V / 60AH	200	20000	6000K 4000K 3000K	65	50000 Hours	Timer
EGE-SFL300-SW7	18V / 80W	3.2V / 80AH	300	30000				



# LED Solar Tri Proof ~0923

## Applications:

**Widely used** in courtyard, classroom, swimming pool, subway station, factory workshop, parking lot etc

## Features:

- **Integrated design:** battery, controller and Led Lamp all in one body housing.
- **Smart Mode:** Pre-set time control.
- **Battery:** High performance Lithium iron phosphate battery (LiFePO4).
- **Suitable height:** 2 to 6 meter.

Model	Solar Panel	Battery	Power	Lumen	CCT	IP	Lifespan	Control
EGE-0923A-020	9V / 15W	6.4V / 12AH	20	2000	6000K	65	50000 Hours	Dimming PIR Sensor
EGE-0923B-040	9V / 20W	6.4V / 18AH	40	4000				
EGE-0923C-060	9V / 28W	6.4V / 24AH	60	6000				
EGE-0923D-080	9V / 38W	6.4V / 30AH	80	8000				



## Application:

**Widely used** in Chemical, Petrochemical, Pharmaceutical industries, waste and sewage treatment , power generation and etc

## Features

- Zone 1, 2, 21 & 22
- High efficiency drivers and LEDs provide, low cost operation in harsh and heavy industrial applications.
- Isolated LED compartment reduces temperature within driver housing



Model	Voltage	Power	PF	Lumen	CCT	IP	Lifespan	Optional
GYD810-50	AC100~240V	50W	0.95	6000	6000K	66	50000 Hours	N/A
GYD810-100		100W		12000				
GYD810-150		150W		18000				
GYD810-200		200W		24000				

# Ex~Proof LED Flood Light ~ GYD 720



## Application:

**Widely used** in Chemical, Petrochemical, Pharmaceutical industries, waste and sewage treatment , power generation and etc

## Features

- Zone 1, 2, 21 & 22
- High efficiency drivers and LEDs provide, low cost operation in harsh and heavy industrial applications.
- Isolated LED compartment reduces temperature within driver housing



Model	Voltage	Power	PF	Lumen	CCT	IP	Lifespan	Optional
GYD 720 -50	AC100~240V	50W	0.95	6000	6000K	66	50000 Hours	N/A
GYD 720 -100		100W		12000				
GYD 720 -150		150W		18000				
GYD 720 -200		200W		24000				



## Application:

**Widely used in** Chemical, Petrochemical, Pharmaceutical industries, waste and sewage treatment , power generation and etc

## Features

- Zone 1, 2, 21 & 22
- High efficiency drivers and LEDs provide, low cost operation in harsh and heavy industrial applications.
- Isolated LED compartment reduces temperature within driver housing



Model	Voltage	Power	PF	Lumen	CCT	IP	Lifespan	Optional
GYD970L-50	AC100~240V	50W	0.95	6000	6000K	66	50000 Hours	N/A
GYD970L-100		100W		12000				
GYD970L-150		150W		18000				
GYD970L-200		200W		24000				

# Ex~Proof LED High Bay ~ GYD 680



## Application:

**Widely used in** Chemical, Petrochemical, Pharmaceutical industries, waste and sewage treatment , power generation and etc

## Features

- Zone 1, 2, 21 & 22
- High efficiency drivers and LEDs provide, low cost operation in harsh and heavy industrial applications.
- Isolated LED compartment reduces temperature within driver housing



IECEX Certificate No : IECEX CNEX 23.0009X

Model	Voltage	Power	PF	Lumen	CCT	IP	Lifespan	Optional
GYD 680 -50	AC100~240V	50W	0.95	6000	6000K	66	50000 Hours	N/A
GYD 680 -100		100W		12000				
GYD 680 -120		120W		14400				
GYD 680 -150		150W		18000				

## Application:

**Widely used in** Chemical, Petrochemical, Pharmaceutical industries, waste and sewage treatment , power generation and etc

## Features

- GRP enclosure, corrosion-proof, Polycarbonate lampshade, strip-shaped with anti-glare
- Special locking mechanism, with reliable locking force
- Built-in explosion proof interlock kdevice, automatically power-off after cover open
- Able to install up to 3 T8 tube

Model	Voltage	Dimension	IP	Lifespan	Optional
BYS-600	AC110~220V	600mm	66	30000 Hours	Battery Back up
BYS-1200		1200mm			



# Ex~Proof LED T8 Fitting~ BPY

## Application:

**Widely used in** Chemical, Petrochemical, Pharmaceutical industries, waste and sewage treatment , power generation and etc

## Features

- Die casting aluminum shell, with high voltage electrostatic plastic-spray surface.
- Easy to change the tube, just remove the end cover to change.
- Electronic ballast, improve the power factor largely, COS>0.95
- Tempered glass lamp shade, stainless steel exposed fastener.
- Steel pipe wiring or cable wiring.

Model	Voltage	Tube	IP	Lifespan	Optional
BPY-1200-S	AC110~220V	Single	66	30000 Hours	N/A
BPY-1200-D		Double			





## Application:

**Widely used in** Explosive hazardous atmosphere Zone 1,2,21 & 22, Safety indication and marking on various marine platform, chemical tankers , LNG ships , cargo and etc

## Features

- Die-cast aluminum body with baked epoxy powder coat finish for durability and corrosion resistance
- Toughened glass transparent cover with high light transmittance
- Designed with test buttons, convenient for regularly maintenance
- The light fitting is designed with a main power indicator, failure and charging indicator, to the using status

Model	Voltage	Power	PF	Back up	IP	Lifespan	Optional
BCJ	AC100~220V	3W	0.95	120 minutes	66	50000 Hours	N/A

# Ex~Proof LED Exit Light ~ BYY



## Application:

**Widely used in** Explosive hazardous atmosphere Zone 1,2,21 & 22, Safety indication and marking on various marine platform, chemical tankers , LNG ships , cargo and etc

## Features

- Die-cast aluminum body with baked epoxy powder coat finish for durability and corrosion resistance
- Toughened glass transparent cover with high light transmittance
- Designed with test buttons, convenient for regularly maintenance
- The light fitting is designed with a main power indicator, failure and charging indicator, to the using status

Model	Voltage	Power	PF	Back up	IP	Lifespan	Optional
BCJ	AC100~220V	3W	0.95	120 minutes	66	50000 Hours	N/A



# LED Hi Grow Lamp~ GL01A

## Features:

- Durable aluminum with less shading
- High efficiency up to 3.0  $\mu\text{mol/J}$
- Likeable solution , can connect 4.20 pcs modules
- Full spectrum with IR, high efficiency spectrum R+B
- Double-sided light-emitting design , minimizes light interception and keeps the lower canopy to get the optimal and uniform light.
- Double-sided 120°



Model	Power	PAR Output	ePAR Output	Current Range	Operating Condition	IP	Optional
EGE GL01A-75	75W	176 $\mu\text{mol/s}$	194 $\mu\text{mol/s}$	1.5A@50Vdc	0°C to 40°C	65	DC connector
EGE GL01A-150	150W	351 $\mu\text{mol/s}$	387 $\mu\text{mol/s}$	3A@50Vdc			

# LED Hi Grow Lamp Tube~ GLT02A

## Features:

- True wide full spectrum.
- Excellent thermal properties
- External driver, good for reliable and maintainable performance
- Suitable height: 2 to 6 meter.
- Double-sided 120°



Model	Power	PAR Output	ePAR Output	Current Range	Operating Condition	IP	Optional
EGE-GLT02A-40	40W	92 $\mu\text{mol/s}$	95 $\mu\text{mol/s}$	0.77A@52Vdc	0°C to 40°C	65	Low/ High Ceiling Mounting Bracket
EGE-GLT02A-75	75W	173 $\mu\text{mol/s}$	179 $\mu\text{mol/s}$	1.44A@52Vdc			Connector

# LED Hi Grow Lamp Green~ GLG04A



### Features:

- **High output artificial lighting for your indoor farming, Higher yield with low cost**
- **20W/1.2M , 30W/2.4M for your choices**
- **Likeable design could lower installation cost, 50 pcs for 20W, 30 pcs for 30W**
- **Simple and stylish, ultra slim design**
- **Double-sided light-emitting design , minimizes light interception and keeps the lower canopy to get the optimal and uniform light.**
- **Double-sided 120°**

Model	Power	PAR Output	ePAR Output	Current Range	Operating Condition	IP	Optional
EGE- GLG04A-20	20W	48 μmol/s	50 μmol/s	0.2A @ 100V 0.07A @ 277V	0°C to 40°C	65	Connector
EGE- GLG04A-30	30W	71 μmol/s	72 μmol/s	0.3A @ 100V 0.11A @ 277V			Low/ High Ceiling Mounting Bracket

## LED Hi Grow Lamp High Bay~ GLHB05A



### Features:

- **True wide full spectrum.**
- **Excellent thermal properties**
- **Reliable and maintainable performance**
- **Suitable for indoor plantation**
- **Radiation angle 120°**

Model	Power	Voltage	PPF Output	System efficacy	Current Range	Operating Condition	IP	Optional
EGE-GLHB05A-150	150W	100-277 VAC	270--500umol/s	1.8--2.5umol/J (±5%)	1.5-2A @ 100V, 0.54-0.72A @ 277V	0°C to 40°C	65	N/A
EGE-GLHB05A-200	200W							



**EGE TECHNOLOGY SDN BHD** (201201031202)

**Address:**

**No. 10, Lorong Industri Impian 1,  
Taman Industri Impian,  
14000, Bukit Mertajam,  
Pulau Pinang, Malaysia**

**Contact us**

**Tel: (6) 04 552 3188**

**Fax: (6) 04 539 9568**

**Email: [sales@egetech.com.my](mailto:sales@egetech.com.my)**

**[www.egetech.com.my](http://www.egetech.com.my)**



**+6019 619 1289**

