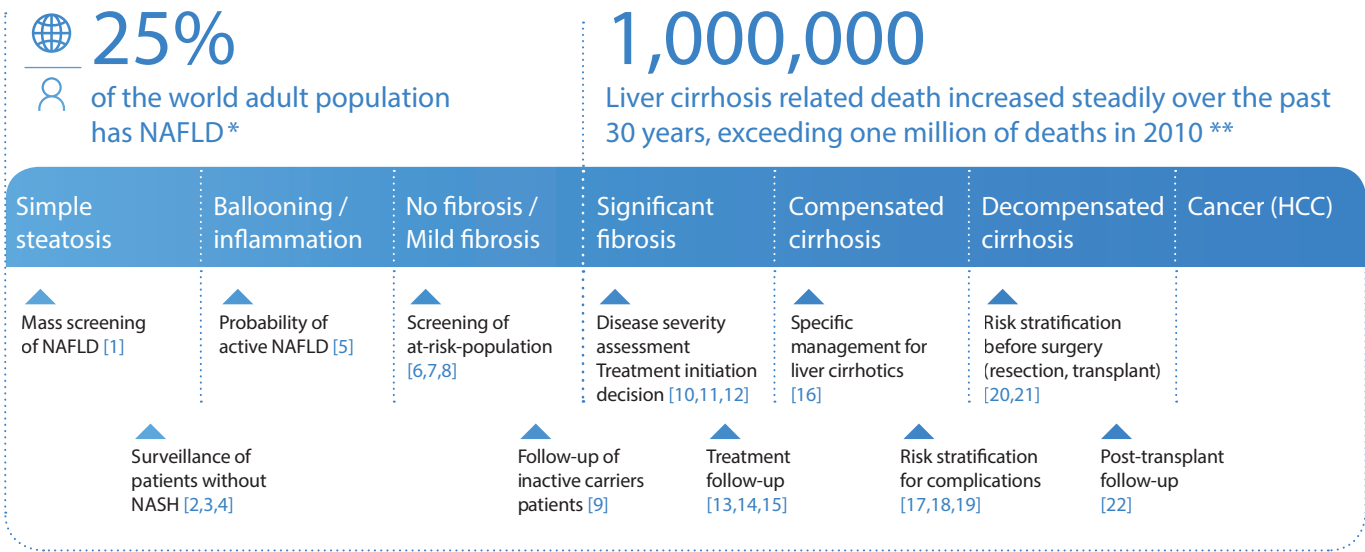
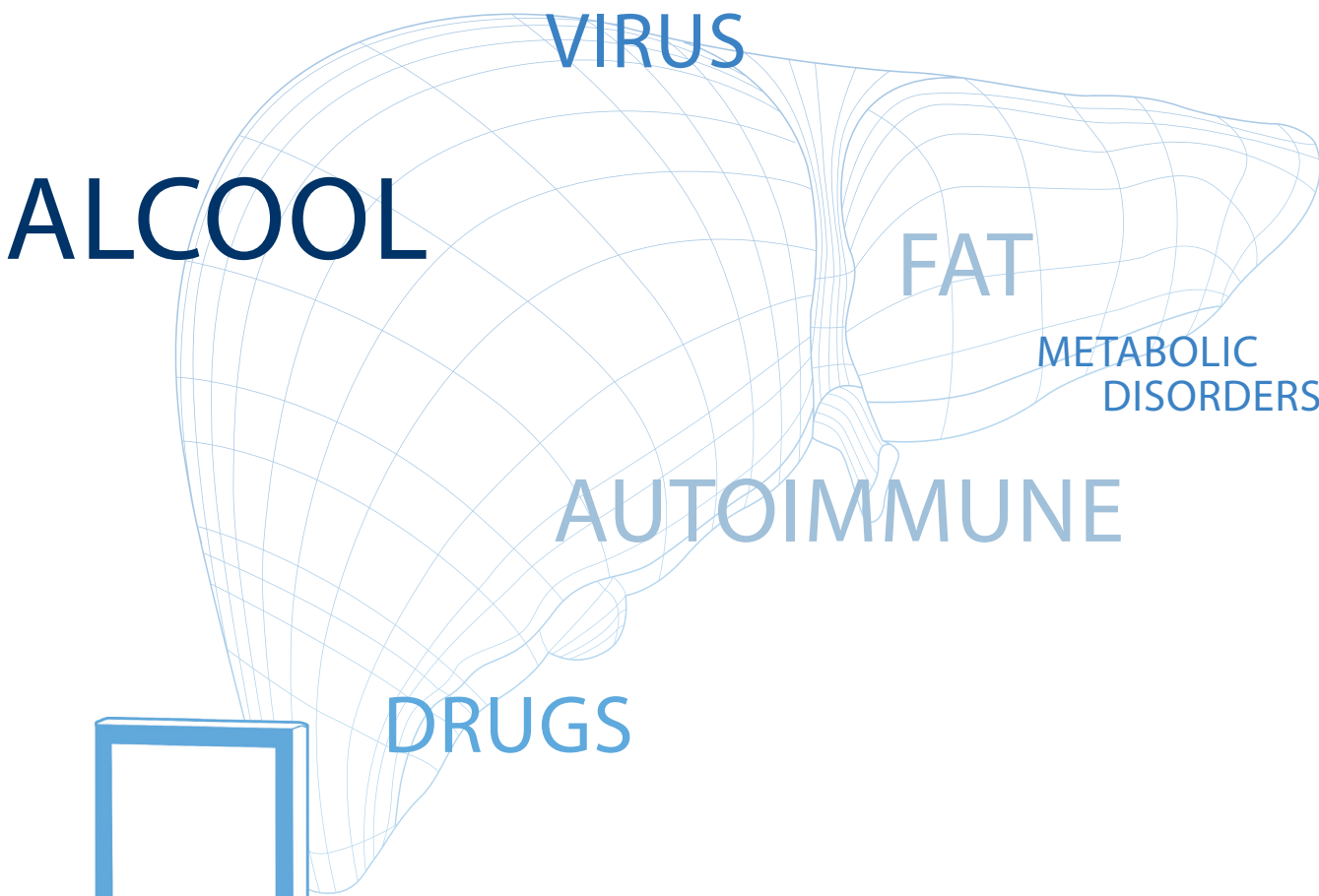




FIBROSCAN DEVICES LEVERAGE ECHOSENS
UNIQUE AND PATENTED TECHNOLOGY

ACROSS CHRONIC LIVER DISEASES SPECTRUM, FROM SCREENING TO FOLLOW-UP AND PROGNOSIS



[1] Carvalhana et al., Liver International 2014;34:e111-117

[2] Arslanow et al., Clinical and Translational Gastroenterology 2016;7(6):e176

[3] Tapper et al., American Journal of Gastroenterology 2016;111(5):677-84

[4] Karlas et al., Journal of Hepatology 2017;66(5):1022-1030

[5] Sasso et al., International Liver Congress 2017, Amsterdam

[6] Benmassaoud et al., PLoS ONE 2018;13(1):e0191985

[7] Kwok et al., Gut 2016;65(8):1359-68

[8] Roulot et al., Liver International 2017;37(12):1897-1906

[9] Castera et al., Alimentary Pharmacology & Therapeutics 2011;33(4):455-65

[10] Steadman et al., Canadian Journal of Gastroenterology 2013;27(3):149-58

[11] Wong et al., Hepatology 2010;51(2):454-462

[12] Chan et al., Journal of viral hepatitis 2009;16(1):36-44

[13] Singh et al., Clinical Gastroenterology & Hepatology 2018;16(1):27-38.e4

[14] Wong et al., Antiviral Therapy 2011;16(2):165-72

[15] Corpechot t al., Hepatology 2012;56(1):198-208

[16] de Franchis et al., Journal of Hepatology 2015;63(3):743-52

[17] Augustin et al., Hepatology 2017;66(6):1980-1988

[18] You et al., Ultrasound in Medicine and Biology 2017;43(1):59-68

[19] Masuzaki et al., Hepatology 2009;49(6):1954-1961

[20] Rajakannu et al., Surgery 2017;162(4):766-774

[21] Berzigotti et al., Annals of Surgery 2015;261(4):e105

[22] Bhat et al., PLoS ONE 2017;12(9):e0185192

FibroScan®

A FULL RANGE OF INTEGRATED SOLUTIONS to further support physicians in the management of patients with chronic liver diseases

FibroMeter™
The hepatic fibrosis scores

FibroView™
Smart connectivity & mobility solutions

myFibroScan™
The perfect companion for your FibroScan

* Younossi ZM, Hepatology 2016;64:73-84
 ** Mokdad AA, BMC medicine 2014;12:145

REFERENCE SOLUTION WITH UNIQUE DUAL FUNCTION CAPABILITY: VCTE & CAP



2,000+ peer-reviewed
publications since 2003

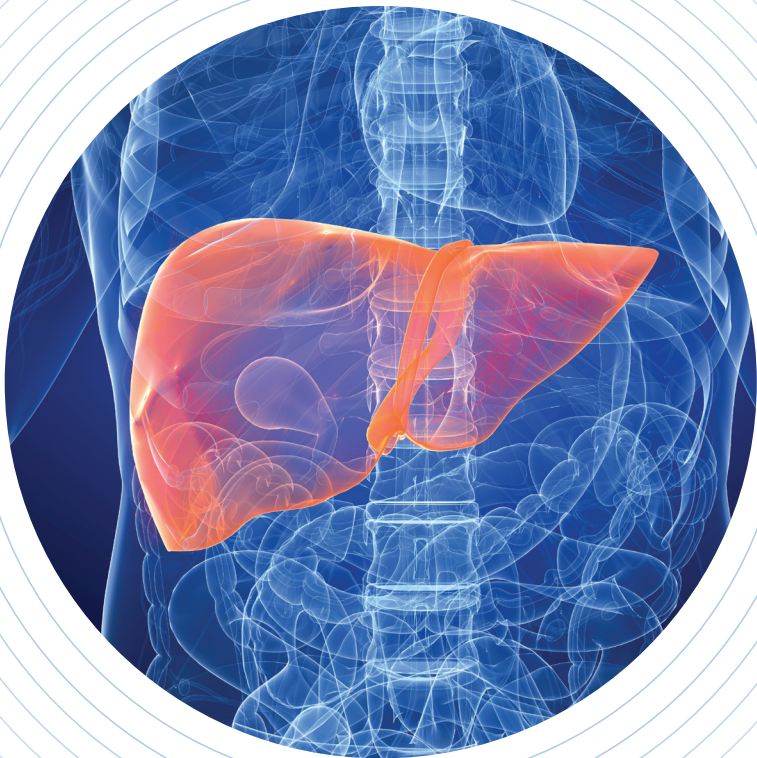
VCTE™ (fibrosis) and CAP™ (steatosis) are simultaneously
measured in the same liver volume (3cm³)

CAP*
LIVER STEATOSIS

CAP (dB/m)	
IQR	MEDIAN
32	223

VCTE**
LIVER FIBROSIS

E (kPa)	
MEDIAN	IQR
4.2	0.1
	IQR/med. 2%



ONLY FIBROSCAN
PROVIDES DUAL
FUNCTION LIVER TESTING:

patented VCTE and CAP measurements

* Controlled Attenuation Parameter
** Vibration Controlled Transient Elastography

FibroScan benefits from a unique clinical legitimacy worldwide and is recommended
in the guidelines of leading organizations

EASL – ALEH 2015^[1]

“TE can be considered the non-invasive standard for the measurement of liver stiffness.”
“For chronic hepatitis C (CHC), it is proposed to associate TE with a blood test (BT), and to accept the diagnosis if both are in agreement.”
“TE is a fast, simple, safe and easy to learn procedure that is widely available.”
“TE can be considered the non-invasive standard for the measurement of LS.”

AGA 2017^[2]

“Vibration-controlled transient elastography (VCTE) is the most commonly used imaging-based fibrosis assessment method in the United States.”
“It has been validated in large cohorts worldwide in a spectrum of liver diseases, including hepatitis B, hepatitis C, fatty liver disease and autoimmune liver disorders, among others.”

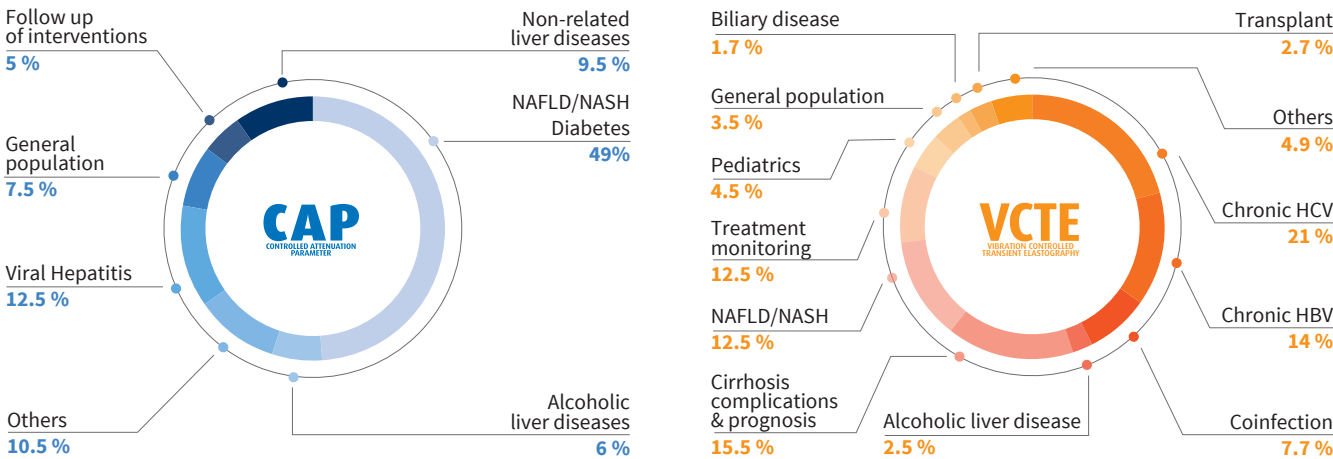
BAVENO VI 2015^[3]

“The introduction of Transient Elastography (TE) in clinical practice has allowed the early identification of patients with chronic liver disease (CLD) at risk of developing clinically significant portal hypertension (CSPH)”
“Liver Stiffness by TE is sufficient to suspect cACLD (compensated advanced chronic liver disease) in asymptomatic subjects with known causes of CLD (chronic liver disease)”

AASLD 2017^[4]

“There should be a high index of suspicion for NAFLD and NASH in patients with type 2 diabetes. Clinical decision aids such as NAFLD Fibrosis Score or FIB4 or vibration controlled transient elastography (VCTE) can be used to identify those at low or high risk for advanced fibrosis (bridging fibrosis or cirrhosis).”

Peer-reviewed publications per etiology

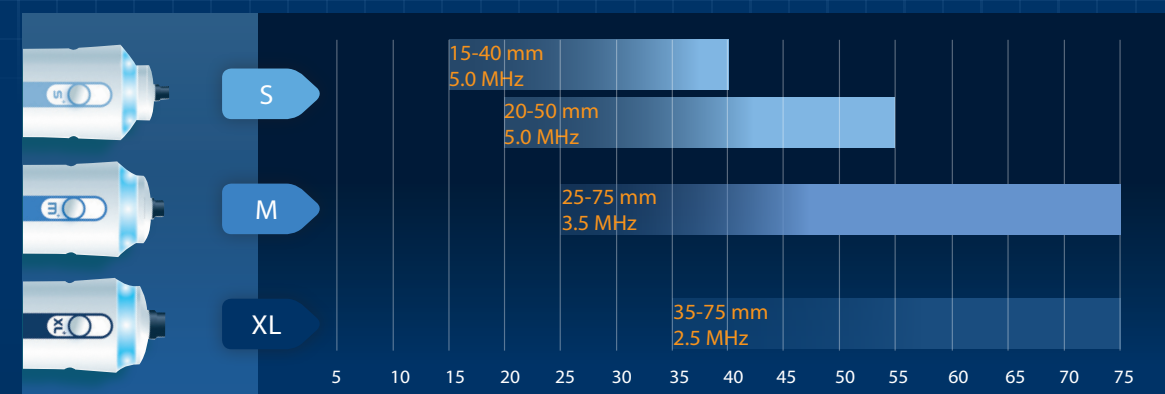


[1] Clinical Practice Guidelines: Non-invasive tests for evaluation of liver disease severity and prognosis
[2] American Gastroenterological Association Institute Guideline on the Role of Elastography in the Evaluation of Liver Fibrosis
[3] Management of Cirrhosis and portal hypertension FibroScan VCTE has become the “standard” method to better diagnose chronic advanced liver disease, with recommended diagnostic cut-offs in kPa
[4] The Diagnosis and Management of Nonalcoholic Fatty Liver Disease: Practice Guidance from the American Association for the Study of Liver Diseases



STANDARDIZED PROCEDURE WITH ENHANCED CONTROLS FOR REPRODUCIBLE AND ACCURATE MEASUREMENTS

RANGE OF PROBES MATCHING PATIENT MORPHOLOGY FOR OPTIMAL MEASUREMENT



INTEGRATED SMART TOOLS FOR IMPROVED OPERATION



EMBEDDED CONTROLS TO ENSURE HIGH STANDARDIZATION AND IMPROVED RELIABILITY

CONTROLLED ENERGY

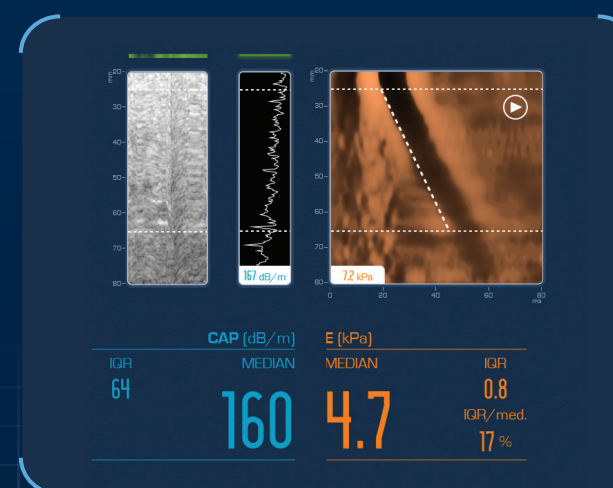
Propagation of the mechanical shear wave is measured using very low acoustic power ultrasound.

Ultrasound frequency (from 2.5 to 5.0 MHz) and depths of measurements are adapted to patient morphology.

CONTROLLED VIBRATION

A specifically designed actuator generates a controlled vibration which induces a mechanical shear wave with consistent frequency (50 Hz) and amplitude (from 1 mm to 3 mm depending on probe).

The static force is monitored in real time to optimize the shear wave penetration.



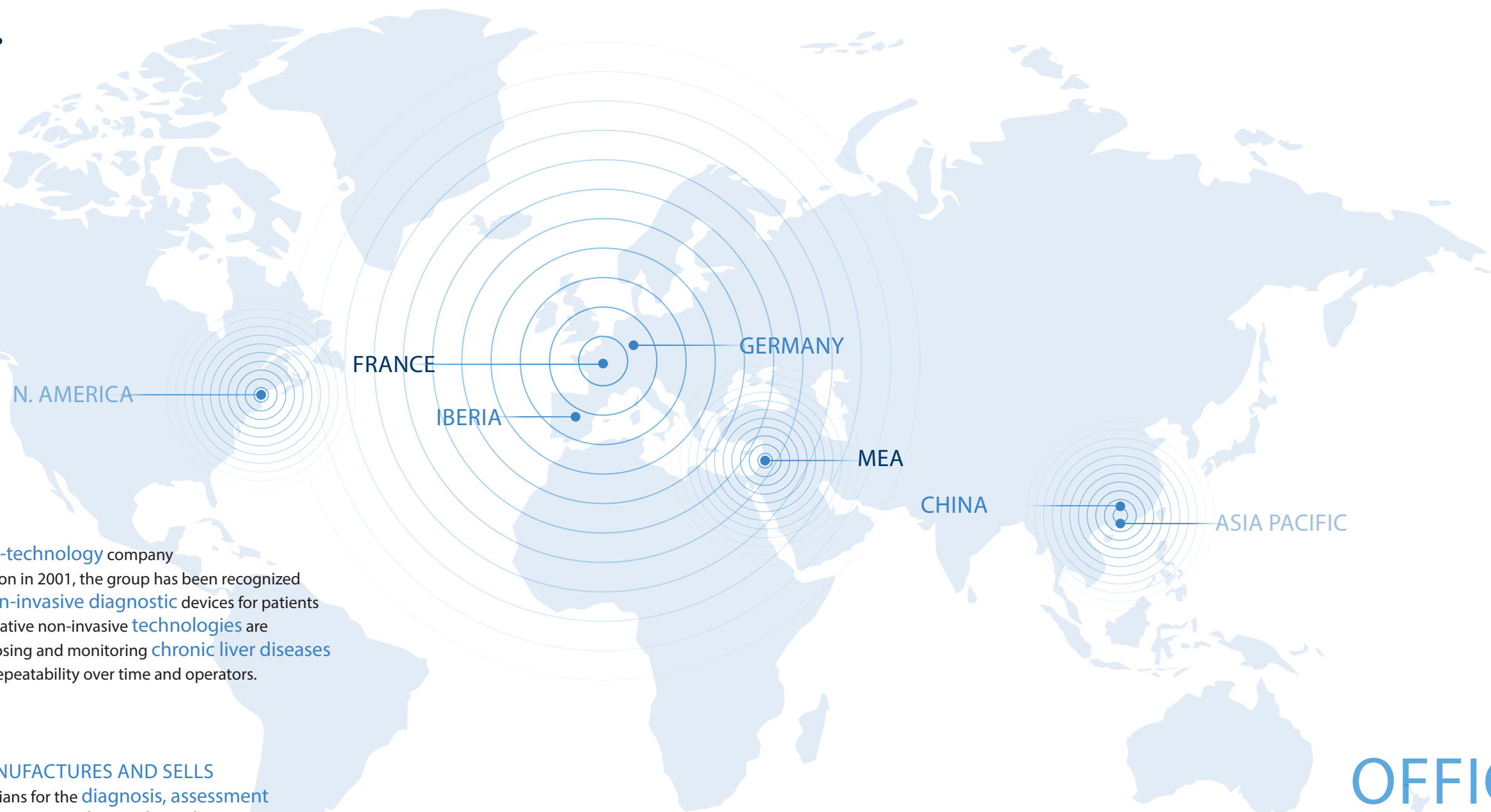
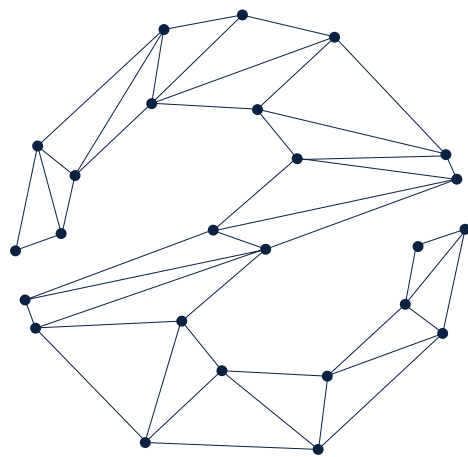
CONTROLLED ALGORITHMS

Guidance tools support the operator to target liver tissues.

Proprietary and sophisticated algorithms compute liver stiffness and attenuation.

Quality controls of shear wave propagation automatically reject invalid measurements.

ABOUT ECHOSSENS



Echossens is an innovative high-technology company based in France. Since its inception in 2001, the group has been recognized as the world's leading provider of non-invasive diagnostic devices for patients with chronic liver diseases. Our innovative non-invasive technologies are recognized for cost effectively diagnosing and monitoring chronic liver diseases with precision, standardization and repeatability over time and operators.

THE GROUP DEVELOPS, MANUFACTURES AND SELLS products and solutions to physicians for the diagnosis, assessment and monitoring of patients with various chronic liver diseases. As a global and rising health issue, liver diseases represent the core development focus of Echossens.

THE GROUP OWNS THREE PRODUCTS LINES: a range of non-invasive diagnostic devices named "FibroScan", a family of diagnostic blood tests named "FibroMeter" and a suite of data management software solutions named "FibroView". These product lines are covered by several patent families owned by Echossens.



OFFICES
IN EUROPE, USA & CHINA
DISTRIBUTION NETWORK IN MORE THAN
80 COUNTRIES

FibroScan® FibroMeter™ FibroView™

SHARING SERVICE SOLUTIONS

Training and Customer service



TRAINING

HOW TO ACHIEVE BEST PRACTICE

After on site training, you will be certified to use FibroScan. The training is mandatory in order to obtain accurate and reliable measurements. Any trained operator can use the equipment but only physicians can interpret the results in light of the patient's history.

Dedicated training includes:

A custom-designed theory session aimed at understanding indications and criteria for use of the device and individual probes

A practical session to teach good examination practice



CUSTOMER SERVICE

ACCESSORIES AND SUPPLIES

To enhance your productivity, the Echosens Customer Service of your local distributor will support you with calibration, repairs, parts and maintenance services.

LOCAL SUPPORT IS AVAILABLE

Distributors are in charge of ensuring the customer service of all Echosens products. Our specially trained and certified engineers will take care of your device. We ensure fast and efficient answers that will keep your device up and running (after acceptance of an estimate or under a service contract).

DIAGNOSE, ASSESS AND MONITOR CHRONIC LIVER DISEASES

