



SyncScan 2

SIUI's newly launched SyncScan 2, is a high-end ultrasonic flaw detector with PA32:128PR and 2-channel TOFD, which can maximize your efficiency for PA and TOFD.



Application Range

- Phased array inspection on tube, forged piece, bar, casting, weld, composite material, railway and alloy steel.
- TOFD inspection on weld of plate, pipeline, tank and boiler.
- Phased array, TOFD and conventional ultrasonic testing in various industries such as transportation, petrochemical engineering, machinery, metallurgy, railway, shipbuilding, aircraft and building.



Superior Features

- High IP rate: IP 65
- Light weight: 4kg only including battery.
- 8.4" LCD with resolution 800×600 pixels.
- Working temperature: -10℃ ~ 45℃
- Faster scan speed.
- Removable electric fan: cool down the system when it works in high temperature.
- Support PA/TOFD/UT, suitable for weld, forging and plate inspection.
- 32-channel PA is more suitable for inspection on extra-thick wall and high-damping material.
- 32-channel PA and 2-channel TOFD work simultaneously, focusing on pressure vessel inspection.
- Support PR mode, focusing on pipe corrosion inspection when connect with high-end twin-crystal PA probe.
- System ports: encoder, VGA, standard SD card, USB 2.0/3.0.
- Probe ports: 4 ports for UT/TOFD probe, 1 port for phased array probe.

Removable Electric Fan



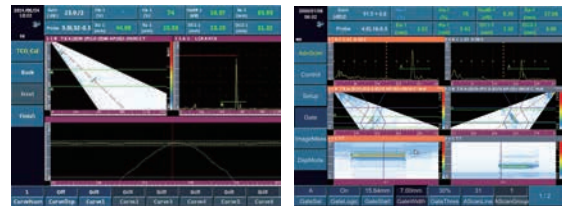
Conventional UT

- Standard functions: Velocity+Zero Calibration/ Angle Calibration/ DAC/ AVG(DGS)/Full screen A scan/ Coordinates switch (sound path, depth, horizontal)/Surface compensation(xx+xxdB)/ Auto freeze/ Second leg color/ Auto gain/ Wave compare/ Wave filling/ Peak Envelope/ Screenshot. API/ TCG/ AWS/ CSC/ B Scan/ Flat Weld Groove(Ray Tracing)/ Crack Height Measurement/ Probe Spectrum Analysis/ Cineloop/ BEA function(Backwall Echo Attenuator)



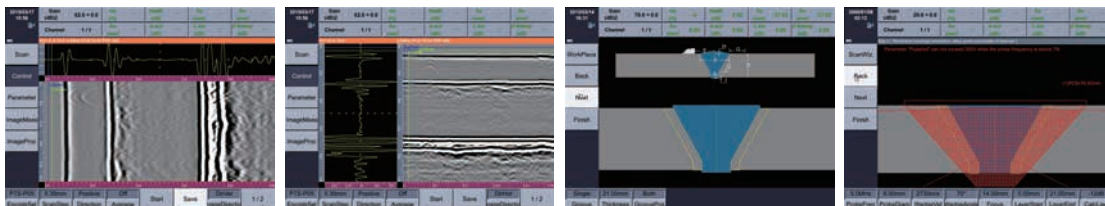
Phased Array

- Standard functions: calibration wizard, PA groups function, BEA function(Backwall Echo Attenuator).
- Optional functions: Simultaneous inspection of PA & TOFD, flat weld solution, angel weld solution, pipe girth weld solution, corrosion solution, DAC curve.



TOFD

- Standard functions: calibration wizard, measurement, image processing.
- Optional functions: SAFT



SIUI

Shantou Institute of Ultrasonic Instruments Co., Ltd.

Add: #77, Jinsha Road, Shantou 515041, Guangdong, China

Tel: +86-754-88250150 Fax: +86-754-88251499

E-mail: siui@siui.com Website: <http://www.siui.com>

