

**TEST REPORT**

**Report No:** AR-20-SV-022470-02  
**Customer:** NBH Engineering & Industrial Sdn Bhd  
**Date of Issue:** 14/07/2020



**Batch No:** EUMYBM-00059187  
**Sample No:** 138-2020-06005142

**To:** NBH Engineering & Industrial Sdn Bhd  
 NO 6, JALAN MJ 16,  
 LAKE 6 INDUSTRIAL PARK,  
 47100 PUCHONG  
 SELANGOR MALAYSIA

**Attn:** Mr.B H Nyin

**Date Sample Received:** 29/06/2020  
**Date of Testing:** 30/06/2020 to 06/07/2020

**The following sample was identified by the customer as :**

PRODUCT: VITON  
 TYPE: SHEET

**Objective (s):** Determination of Cadmium (Cd), Hexavalent Chromium (Cr6+), Lead (Pb), Mercury (Hg), Phthalates, Polybrominated Biphenyl (PBBs), Polybrominated Diphenyl Ether (PBDEs) with RoHS Directive 2011/65/EU and (EU) 2015/863 (amendment in Annex II)

**Conclusion:**

Test(s) Required	Compliance with Objective(s)
Cadmium (Cd), Lead (Pb), Mercury (Hg), Chromium VI, Monobromobiphenyl, Dibromo biphenyls, Tribromo biphenyls, Tetrabromo biphenyls, Pentabromo biphenyls, Hexabromo biphenyls, Heptabromobiphenyl, Octabromo biphenyls, Nonabromo biphenyls, Decabromo biphenyls, Sum Polybrominated Biphenyls (PBB), Monobromodiphenyl ether, Dibromodiphenylether, Tribromo diphenyl ethers, Tetrabromo diphenyl ethers, Pentabromodiphenyl ether, Hexabromo diphenyl ethers, Heptabromo diphenyl ethers, Octabromo diphenyl ethers, Nonabromo diphenyl ethers, Decabromo diphenyl ethers, Sum Polybrominated Diphenyl Ether (PBDE), Benzyl butyl phthalate (BBP), Bis(2-ethylhexyl)phthalate (DEHP), Dibutyl phthalate (DBP), Di-isobutyl phthalate (DiBP)	Comply

**Test Result(s):**

Analysis	Industrial Products Analysis	Unit	Result	LOQ	Test Method	Specification
SVK51	Cadmium (Cd)	mg/kg	ND(<LOQ)	1	IEC 62321-5	≤100mg/kg
SVL03	Lead (Pb)	mg/kg	70	10	IEC 62321-5	≤1000mg/kg
SVK82	Mercury (Hg)	mg/kg	ND(<LOQ)	5	IEC 62321-4	≤1000mg/kg
SVV1M	Hexavalent Chromium (Cr6+)	mg/kg	ND(<LOQ)	20	IEC 62321-7-2	≤1000mg/kg
SVK16	<b>Polybrominated Biphenyl (PBBs)</b>				IEC 62321-6	
	Monobromobiphenyl	mg/kg	ND(<LOQ)	20		Refer Note 2
	Dibromo biphenyls	mg/kg	ND(<LOQ)	20		Refer Note 2
	Tribromo biphenyls	mg/kg	ND(<LOQ)	20		Refer Note 2
	Tetrabromo biphenyls	mg/kg	ND(<LOQ)	20		Refer Note 2
	Pentabromo biphenyls	mg/kg	ND(<LOQ)	20		Refer Note 2
	Hexabromo biphenyls	mg/kg	ND(<LOQ)	20		Refer Note 2
	Heptabromobiphenyl	mg/kg	ND(<LOQ)	20		Refer Note 2
	Octabromo biphenyls	mg/kg	ND(<LOQ)	20		Refer Note 2
	Nonabromo biphenyls	mg/kg	ND(<LOQ)	20		Refer Note 2
	Decabromo biphenyls	mg/kg	ND(<LOQ)	20		Refer Note 2
	Sum Polybrominated Biphenyls (PBB)	mg/kg	ND(<LOQ)	-		≤1000mg/kg

TEST REPORT

Report No: AR-20-SV-022470-02  
Customer: NBH Engineering & Industrial Sdn Bhd  
Date of Issue: 14/07/2020



Batch No: EUMYBM-00059187  
Sample No: 138-2020-06005142

Analysis	Industrial Products Analysis	Unit	Result	LOQ	Test Method	Specification
SVK17	<b>Polybrominated Diphenyl Ether (PBDEs)</b>				IEC 62321-6	
	Monobromodiphenyl ether	mg/kg	ND(<LOQ)	20		Refer Note 2
	Dibromodiphenylether	mg/kg	ND(<LOQ)	20		Refer Note 2
	Tribromo diphenyl ethers	mg/kg	ND(<LOQ)	20		Refer Note 2
	Tetrabromo diphenyl ethers	mg/kg	ND(<LOQ)	20		Refer Note 2
	Pentabromodiphenyl ether	mg/kg	ND(<LOQ)	20		Refer Note 2
	Hexabromo diphenyl ethers	mg/kg	ND(<LOQ)	20		Refer Note 2
	Heptabromo diphenyl ethers	mg/kg	ND(<LOQ)	20		Refer Note 2
	Octabromo diphenyl ethers	mg/kg	ND(<LOQ)	20		Refer Note 2
	Nonabromo diphenyl ethers	mg/kg	ND(<LOQ)	20		Refer Note 2
	Decabromo diphenyl ethers	mg/kg	ND(<LOQ)	20		Refer Note 2
	Sum Polybrominated Diphenyl Ether (PBDE)	mg/kg	ND(<LOQ)	-		≤1000mg/kg
SVV1Q	<b>Phthalates</b>				IEC 62321-8	
	Benzyl butyl phthalate (BBP)	% (w/w)	ND(<LOQ)	0.02		≤0.1%
	Bis(2-ethylhexyl)phthalate (DEHP)	% (w/w)	ND(<LOQ)	0.02		≤0.1%
	Dibutyl phthalate (DBP)	% (w/w)	ND(<LOQ)	0.02		≤0.1%
	Di-isobutyl phthalate (DiBP)	% (w/w)	ND(<LOQ)	0.02		≤0.1%

Specification Note

- RoHS Directive 2011/65/EU and (EU) 2015/863 (amendment in Annex II)
- Based on sum amount of PBB/PBDE limit, which is ≤1000mg/kg

Remark

- The test portion was totally dissolved for cadmium, lead & mercury test by using pre-conditioning method as mentioned above.
- IEC 62321 flowchart can be obtained from <https://cdnmedia.eurofins.com/apac/media/601319/efctm001issue01.pdf>
- The test portion was ashed before the pre-conditioning method for Cadmium & Lead test as mentioned above.

Version Remark(s):

- Analytical Report AR-20-SV-022470-02 issued on 14/07/2020 will supersede previous version of report(s). Upon receipt of this revised copy, all earlier version of report(s) will be invalid immediately.

This 3 page(s) of report and its attachment(s), if relevant, has/have been validated by



Nurul Fitriyah Abdullah, M.Sc. in Chemistry  
IKM Registered Chemist  
Registered No.:M/3945/6698/13

**TEST REPORT**

**Report No:** AR-20-SV-022470-02  
**Customer:** NBH Engineering & Industrial Sdn Bhd  
**Date of Issue:** 14/07/2020



**Batch No:** EUMYBM-00059187  
**Sample No:** 138-2020-06005142

**EXPLANATORY NOTE**

This document can only be reproduced in full; it only concerns the submitted sample.

Results have been obtained and reported in accordance with our general sales conditions available on request.

When declaring compliance or non-compliance, the uncertainty associated with the result has been added or subtracted in order to obtain a result that can be compared to regulatory limits or specifications. The uncertainty has not been taken into account for standards that already include measurement uncertainty.

The tests are identified by a five-digit code, their description is available on request.

- ◆ test is not accredited
- test is subcontracted within Eurofins group and is accredited
- test is subcontracted within Eurofins group and is not accredited
- test is subcontracted outside Eurofins group and is accredited
- test is subcontracted outside Eurofins group and is not accredited

**N/A** means not applicable

**ND** denotes not detected for value obtained is less than the Limit of Quantification (LOQ)

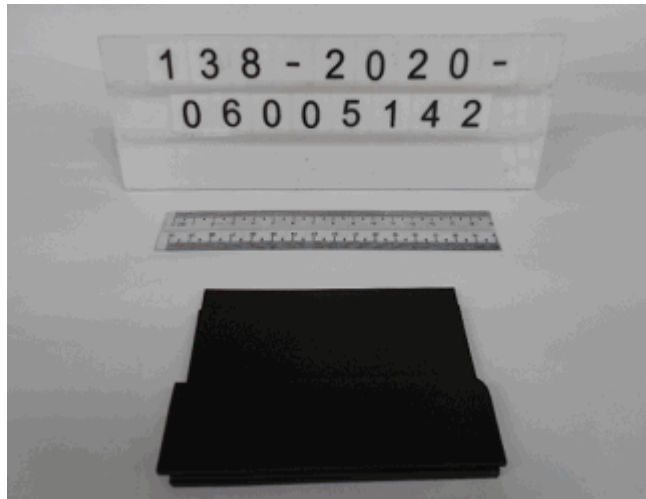
**<LOQ** means not detected at or below the Limit of Quantification (LOQ)

The result(s) relate(s) only to the item (s) tested.

This analytical report shall not be reproduced except in full, without written approval of the laboratory.

Eurofins General Terms and Conditions apply.

**Sample Photograph(S)**



**- End of Report -**