

# Face Shield | Model FG-F10M

Thank you very much for purchasing this product.  
Please read this User Manual carefully to ensure proper operation.  
Be sure to read "Safety Precautions" before using the product.  
Be sure to keep this manual in a place where you can refer to it any time.



## Product Features

This is a face shield that utilizes surface reflection suppression technology (Moth-eye technology\*) developed in LCD technology.

### 1. Low Reflection

- The wearer has a clear field of vision because there is low reflection of lighting.
- Since the lighting does not reflect on the wearer's face, the face is clearly visible to those who are facing them.

### 2. Anti Fogging

- Water droplets spread over the surface, increasing the surface area and drying quickly. This prevents fogging in many situations.

### 3. High Transparency & Clear

- The coloration is minimal, and clear vision can be ensured.

## Made In Japan

### ❖ Moth Eye Technology

- Technology to industrially create nano-convex surface structures with size of 199 to 200 nm, similar to the eyes of moths, which can fly even in total darkness
- Continuously changing the refractive index through microscopic bumps prevents the reflection of almost all light.

## Moth Eye Nano Structure Effect




	With Moth Eye Nano structure	Without Moth Eye Nano structure
<b>Low Reflection</b> <b>High Transmissivity</b>	<p>0.3% Low Reflection</p> <p>Film substrate</p>	<p>4%</p> <p>Normal Surface</p> <p>Film substrate</p>
<b>Anti Fogging</b>	<p>Water droplets</p> <p>Film substrate</p> <p>Rapid-drying = anti-fogging</p>	<p>Water droplets</p> <p>Film substrate</p> <p>Harder to Evaporate</p>

Contents: ☐ Frame ☐ Film ☐ User Manual

Specification		
Model	FG-F10M	
Dimensions	Frame	183mm x 153mm x 6mm (Width x Depth x Height)
	Film	195mm x 268mm x 0.18mm (Length x Width x Thickness)
Weight	Frame	14g
	Film	11g
Material	Frame	Polycarbonate
	Film	Polycarbonate, Acryl Resin

## Safety Precautions \*Please observe the following precautions

- The danger & its extent if the product is handled improperly.

	<b>Warning</b> May cause death or serious injury
	<b>Caution</b> Risk of minor injury or property damage
	<b>Warning</b> To prevent injury



- If it is damaged, never use it.
- Do not clean with benzene, thinner, kerosene, acidic detergent, alkaline detergent, etc.
- Do not use in situations where there is a high risk of this product will fall off.
- Never disassemble or modify the main body or accessories.
- Do not use it only by children or within reach of infants.
- Do not use for purposes other than those described in this manual.
- Do not use while driving a car / motorcycle or bicycle.

- The meaning of the graphic symbol used in the text.

	<b>Indicates that you must not do</b>
	<b>Indicates that you should do</b>
	<b>Caution</b> To prevent injury



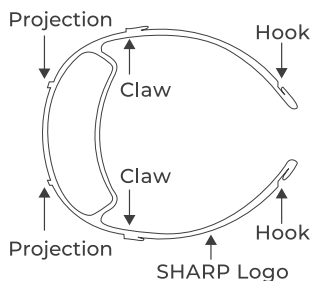
- Be careful when handling the film in a way that the edges of the film do not hurt your hands or face.
- Not use if the film is damaged or dirty.
- Install the film and frame correctly according to the instructions in this manual.
- Discontinue use if you have an abnormality on your skin or if it does not fit your skin.

## Purpose of use

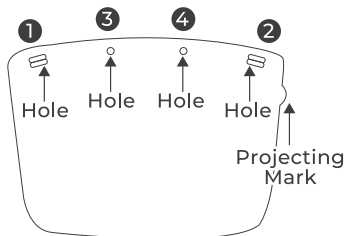
- This product is to reduce the contact of liquid droplets and dust to the face. Do not use it as a protective device against solids or fire.

## Name of each part

### Frame

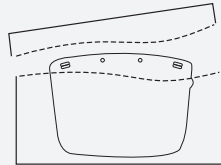


### Film



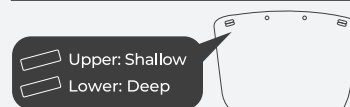
## Instruction on use

### Film takeout

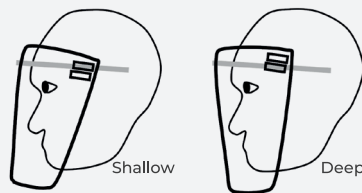


You can prevent fingerprints from adhering to the film by taking out only the top of the film with holes and attaching the film to the frame.

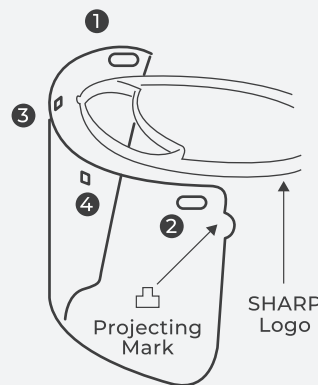
### Film angle switching hole



Two holes are provided so that the angle of the film when the face shield is attached can be changed in two steps. It becomes shallow to insert the claws of the frame into the upper hole, and it becomes deep to insert the claws of the frame into the pilot holes.

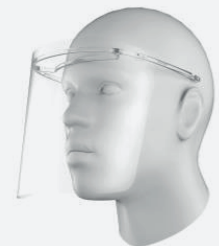


### Fitting



### Removing

1. Remove the two holes **3** **4** in the center of the film from the protrusions on the frame.
2. Remove the holes on the film side in the order **2** → **1** from the claws on the frame.



### Preparation

- Set the projecting mark on the film towards SHARP logo side on the frame.

### Procedure

1. Insert the claws of the frame in the order of holes **1** → holes **2** on the film side.
2. Fit the protrusions of the frame into the two holes **3** and **4** in the center of the film.

### Wearing

- Lightly spread the handle of the frame and attach it to your head.
- Secure the frame on your forehead.
- If it is loose, pass a commercially available elastic cord through the hook of the frame and tighten it.

## Care

- If the film surface becomes dirty, soak a soft cloth such as tissue or eyeglass cloth with commercially available rubbing alcohol (excluding gel type) or diluted neutral detergent, and wipe it gently. If unevenness remains after wiping, wipe it gently with a tissue soaked in water and wrung well. There is concave and convex processing on the film. If you rub it violently, the unevenness is broken and the function may deteriorate.

## Precautions for use

- It cannot be used in places where harmful dust or gas is generated, or for the purpose of preventing them.
- Discontinue use if you have an abnormality on your skin or it does not fit your skin.
- If you feel sick while wearing it, discontinue to use.
- If you feel that your head is tight, adjust the mounting position or insert some material like cushion.
- Please keep out of reach of infants.
- Do not use or store near fire.
- Store this product away from high temperatures and humidity and places exposed to direct sunlight.
- When disposing of this product, please dispose of it in accordance with the regulations of the local government.

SHARP ELECTRONICS (MALAYSIA) SDN. BHD. (356997-H)

No.1A, Persiaran Kuala Langat, Section 27, 40400 Shah Alam, Selangor Darul Ehsan, Malaysia.

SHARP CUSTOMER SERVICE: Hotline: 03-8026 6228 | Email: sharpcs\_support@my.sharp-world.com