



TurbiTechw² LS

Suspended Solids and Turbidity Sensor

PRODUCT DATASHEET

APPLICATIONS

- Final Effluent Turbidity
- Final Effluent Solids
- Inlet Solids
- Primary Settled Sewage
- Surface Water

MEASUREMENT PRINCIPAL

- 90° Light Scatter
- Wavelength 860nm
- ISO 7027 Compliant

FEATURES

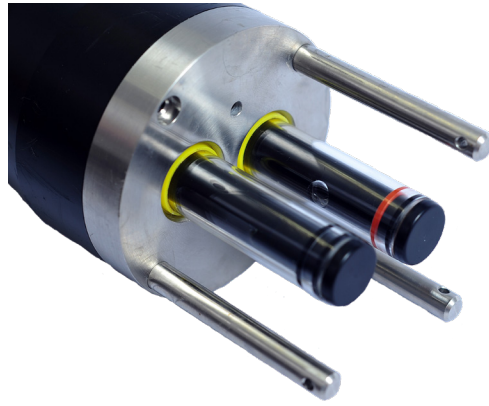
- Fully automatic Self Cleaning
- Flexible Mounting System
- Large Optical Surface

BENEFITS

- Automated Aeration Control
- Low Cost of Ownership

COMPATIBLE MONITOR

7300w² Monitor



The TurbiTechw² LS Sensor is designed to monitor the levels of suspended solids or turbidity typically found in final effluent from municipal and industrial wastewater treatment plants. It is also great at monitoring solids in the intake to both effluent and drinking water treatment processes.

Monitoring of these key parameters requires sensors that are reliable accurate, the TurbiTechw² LS meets this requirement perfectly. The large optical surfaces and sample volume ensure that the information provided by the sensor is both representative of the process and tolerant of fouling. In addition, the sensor incorporates a self cleaning mechanism that ensures that optical surfaces are kept clean at all times, the cleaning system is designed to avoid problems with ragging and does not smear the optical system.

The cleaning process takes only 90 seconds, which means that the sensor is available for 99.5% of the time with a 6 hour cleaning cycle.

Call us on + 44(0) 1726 879800 www.partech.co.uk



TurbiTechw² LS

Suspended Solids and Turbidity Sensor

PRODUCT SPECIFICATION



Physical

Dimensions
Weight
Protection Class
Enclosure Material
Cable Entries
Wetted Parts

470 x Ø80 mm
2.2kg (inc 10 metres of cable)
IP68
Black Acetal Co-Polymer,
Integral Cable Gland
Black Acetal, 316 Stainless Steel, Glass, Polyurethane,
Nitrile
4 core, 2 Twisted Pair, 9 mm O/D Polyurethane,
10 metres, 100 metres maximum
Automatic Self Cleaning
Seal Service every 3500 cleans (application dependent)

Cable Type
Cable Length
Service Requirement

Environmental Data

Operating Temperature

0 to +50°C

Interface to Monitor

Power Supply
Sensor Output

12 VDC from Monitor
ModTechw², RS485

Measurement

Range
Accuracy
Limit of Detection
Minimum Operating Range

0-100 FTU
±5% of measured value or ±0.5 FTU whichever is greater
0.5 FTU
0 - 10 FTU

Range
Accuracy
Limit of Detection
Minimum Operating Range

0-500 FTU
±5% of measured value or ±2.5 FTU whichever is greater
2.5 FTU
0 - 50 FTU

Range
Accuracy
Limit of Detection
Minimum Operating Range

0-1,000 FTU
±5% of measured value or ±5 FTU whichever is greater
5 FTU
0 - 100 FTU

Measurement Principle

90° Light Scatter
ISO 7027 Compliant

Wavelength
Pressure Rating (Depth)
Flowrate
Units

860nm Infrared
1Bar or 14.5 psi
Not affected by flowrate, avoid deadspots and extreme turbulence
User Selectable mg/l, g/l, ppm, %SS, FTU, NTU

The actual measuring range will depend on nature of sample being monitored.

Mounting

Installation Type
Mounting Shaft
Handrail Attachment

Dip
1.0 to 3 metres in 1 metre increments
Contact Partech for a full range of mounting options

Order Codes

Part No Description

223510 TurbiTechw² LS Sensor
(Range: 0-500 FTU,
Cable Length: 10
metres, Nitrile Seals)

226447 TurbiTechw² LS Sensor
(Range: 0-100 FTU,
Cable Length: 10
metres, Nitrile Seals)

225455 TurbiTechw² LS Sensor
(Range: 0-1000 FTU,
Cable Length: 10
metres, Nitrile Seals)

Publication No: 223510DS-Iss11

The company reserves the right
to alter the specification without
prior notice. E&OE

Call us on + 44(0) 1726 879800 www.partech.co.uk



Address: Rockhill Business Park, Higher Bugle, St Austell, Cornwall PL26 8RA, UK E: info@partech.co.uk