

WaterTechw² FCL Sensor

THE WATERTECHW² FCL SENSOR IS A ROBUST IN-TANK MONITORING SOLUTION USED TO MEASURE FREE CHLORINE IN A WIDE VARIETY OF WATER AND WASTEWATER APPLICATIONS.

RELIABLE OPERATION

- The industrial-grade design is resistant to the impacts of a harsh plant environment.
- The sensor is equipped with a reference electrode to eliminate the need for pH compensation and reduce the risk of zero drift.

LOW COST OF OWNERSHIP

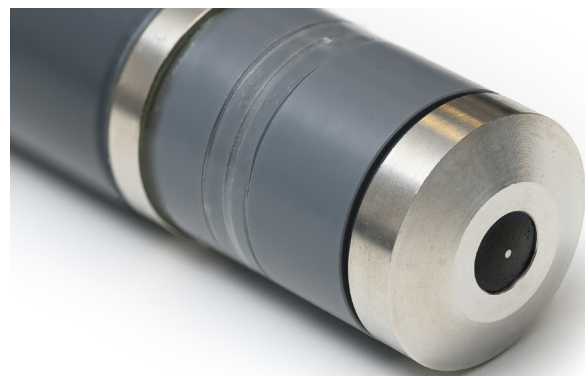
- The WaterTechw² FCL sensor requires membrane and electrode replacement once a year.
- Maintenance is minimal because reagents and buffers aren't required.

INTEGRATED SOLUTION

- The WaterTechw² FCL sensor is part of a complete digital portfolio of process sensors that can be used with the 7300w² Monitor and Control Point 2.0 Monitor.

TOTAL FIELD OF SUPPORT

- Our team of experts provides outstanding customer service and technical support.



Applications:

- DRINKING WATER TREATMENT
- WASTEWATER TREATMENT
- INDUSTRIAL PROCESSES

GENERAL		WaterTechw² FCL Sensor	
DIMENSIONS	Electrode Body - 220mm(8.7") x 25mm(0.9") diameter Interface Enclosure - 120mm(4.7") x 110mm(4.3") x 45mm(1.7")	CABLE TYPE: TO ELECTRODE	2 core, twisted pair, 5 mm(0.1") O/D polyurethane
PROTECTION CLASS	IP65	CABLE LENGTH: TO ELECTRODE	1 meter (3.2ft)
ELECTRODE BODY	PVC-U, PEEK, Stainless Steel, microporous hydrophilic membrane	OPERATING TEMPERATURE	0 to 45°C (32 to 113°F)
INTERFACE ENCLOSURE	ABS	PRESSURE	3 Bar, no pressure surges and/or fluctuations
CABLE ENTRIES	Integral Cable Gland	POWER SUPPLY	12 Volts from monitor
CABLE TYPE: TO MONITOR	4 core, 2 twisted pair, 5 mm O/D polyurethane	INTERFACE TO MONITOR	Modbus RS485
CABLE LENGTH: TO MONITOR	1 meter (3.2ft)	COMPLIANCE	334.0
SERVICE REQUIREMENT	Membrane & electrode replacement every 12 months - Regular calibration is required by means of analytical determination.		
MEASUREMENT			
RANGE	0 to 5ppm (mg/l)	REPOSE TIME	T90 = approx. 2 minutes
RESOLUTION	0.01ppm (mg/l)	PH RANGE	4 to 9 pH
MEASUREMENT PRINCIPLE	Membrane covered, amperometric, 3-electrode system	INTERFERENCES	Chlorine Dioxide, Ozone
Warranty	2 Years		