

## SONICHEK™ PRO

### Professional Sound Level Meter

### Instruction Manual

#### 1. Introduction

The Triplett Model 3550 Sound Level Meter is a quality sound level measuring instrument with a set of functions that make it useful for a variety of professionals. With a backlight LCD display, 130dB full scale measurement capability, both A and C-weighting measurement support, and peak capture functions, it can help make many measurement tasks easier

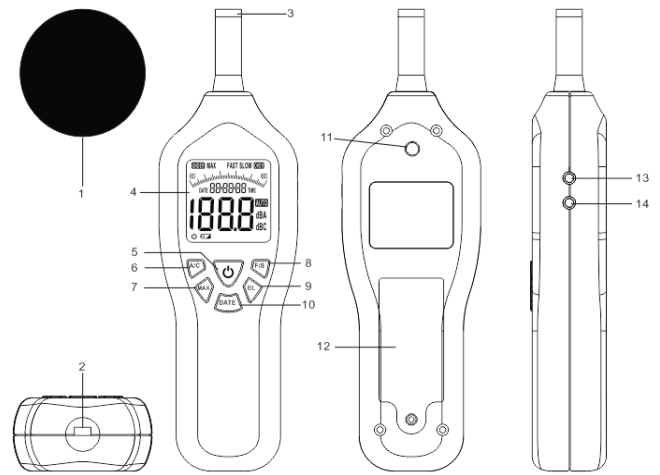
#### 2. Product Features

- Sound level range: 30dB to 130dB(Auto Ranging)
- A and C weighting for measurements
- Fast and Slow time response selection
- Max Hold function
- High accuracy
- Bar graph and large numeric display
- AC/DC output voltage function
- White LCD Backlight
- Over / Under Range indicator
- Time and date display
- Automatic Power-off function to conserve battery life
- Low Battery Alert
- Threaded tripod mount (Tripod not included)
- Soft carrying case, USB cable (power line function only), instruction manual, AC/DC output leads, batteries included
- CE Certified & RoHS Compliant

#### 3. Product Specifications

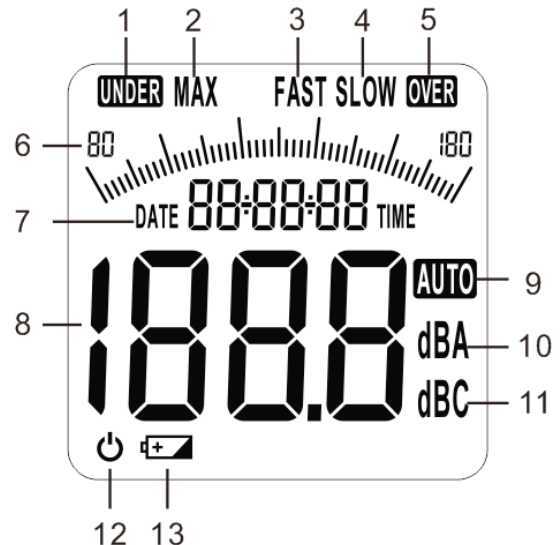
<b>Designed according to standards</b>	IEC651 (Type 2) and ANSI S1.4 (Type 2)
<b>Calibration sound source</b>	94dB @ 1KHz
<b>Measurement range</b>	30 – 130dB
<b>Accuracy</b>	+1.5dB (reference sound pressure standard, 94dB@1KHz)
<b>Frequency Response</b>	31.5Hz – 8.5KHz
<b>Resolution</b>	0.1dB
<b>Measurement weighting</b>	A or C weighting
<b>Bar graph display</b>	2dB/Bar graph increment
<b>Meter Response time</b>	Fast (125 milliseconds), Slow (1 second)
<b>Numeric Display Response Rate</b>	Fast (2 updates/second), Slow (1 update/second)
<b>AC signal output</b>	2V(RMS) full scale (130 dB), output impedance is approximately 600 Ohms
<b>DC signal output</b>	33mV/dB (per dB above 30dB threshold detection level)
<b>Power Source</b>	(4) AA (1.5V) batteries (R6 or LR6 or GR6M)
<b>Physical Dimensions</b>	245mm x 70mm x 45 mm
<b>Weight</b>	Approximately 240 grams (with batteries)



#### 4. Product Description



1. Sponge ball (Mandatory for outdoor use to reduce wind noise)
2. USB socket (used for USB power only)
3. Capacitive microphone
4. LCD display with backlight
5. Power on/off switch
6. A/C frequency weighting selection button
7. MAX reading button
8. FAST/SLOW response button
9. Backlight button
10. Date and time switch button
11. Tripod mounting thread
12. Battery cover
13. AC output socket (for analog output)
14. DC output socket (for analog output)




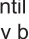
#### 5. LCD Display Features



1. **UNDER:** Alarm symbol, if the reading below minimum, this symbol will display.
2. **MAX:** When in this mode only the highest noise reading will display on the main reading display
3. **FAST:** Fast time weighting (refer to respond speed)
4. **SLOW:** Slow time weighting (refer to respond speed)
5. **OVER:** Alarm symbol, if the measurement is over the maximum range (130dB), this symbol will display.
6. **Bar Graph:** Sound levels are displayed via this graph and via the digital display reading (see 8)
7. **Date and Time Display** (display current date and time)
8. **Numeric measurement display**
9. **AUTO:** Permanently displayed to indicate the meter is in auto ranging mode
10. **dBA:** Measurement unit (A-weighting)
11. **dBC:** Measurement unit (C-weighting)
12.  Auto off symbol
13.  Low battery warning symbol – indicates that battery voltage is low and that the batteries should be changed. If operating the unit from USB cable-supplied power (5V), this symbol will also be activate.

## 6. Operating Instructions

### 6-1 Turning the unit on and off

- 6-1-1** Press the  **button** to turn on the meter.  
*After 10 minutes without any button presses, the meter will automatically power off.*
- 6-1-2** Press the  **button** again to turn off the meter manually.
- 6-1-3** To temporarily disable the automatic power off function, with the meter initially "off", press and hold the **F/S button** then press and release the  **button** to turn on the meter. After the screen briefly turns and then goes blank, release the **F/S button**. The meter should now remain on and continue to measure as long as it has battery power or until the user turns it off by pressing the  **button**. This feature may be useful when testing alarm systems without the help of an assistant to operate the meter. The meter will revert to its normal 10 minute automatic power off function the next time it is powered off and on again without holding the **F/S button**.

### 6-2 A/C frequency weighting selection

- 6-2-1** Press the **A/C button** to select measurement frequency weighting method A or C (your selection will display on the right side of the LCD screen as dBA or dBC).
- 6-2-2** The meter always defaults to A-weighting when powered on.

A weighting enables the meter to respond in a manner similar to the human ear, which is less sensitive to low frequency sounds than high frequency sounds and so the perceived loudness varies with the source frequency. Typical applications include environmental measurement, law enforcement and workplace design.

C weighting is suitable for flat response measurements with no low frequency measurement rolloff across the lower part of the sound frequency spectrum (below 1KHz). Typical applications include the sound level analysis of machinery and engines.

### 6-3 MAX value measurement function

- 6-3-1** To have the meter capture and hold the maximum, or peak sound pressure level measurement, press and release the **MAX button** to freeze the maximum measurement on the screen. The reading will remain unchanged until a higher level reading is detected and captured. Note that the bar graph will continue to change/fluctuate to reflect the current sound level reading. When operating in MAX mode, the "MAX" screen icon will be indicated on the LCD display.
- 6-3-2** Press the **MAX button** again to exit MAX, or peak capture, mode.


### 6-4 FAST/SLOW response function

- 6-4-1** The meter defaults to fast response mode when it is powered on.
- 6-4-2** Pressing the **F/S button** toggles the meter's response and display update modes between Fast (125 millisecond meter response time with numeric display updating at 2 times/second), and Slow (1 second meter response time and numeric display updating at 1 time/second). The meter's bargraph display will update at the 125 millisecond (Fast) or 1 second (Slow) response time intervals.


### 6-5 BACKLIGHT function

Press **Backlight button** to turn the backlight on or off.

### 6-6 Setting time and date

- 6-6-1** To set the date and time on the meter, start with the meter powered "Off". Press and hold the **A/C button** and the press and release the **Power Button** . The LCD screen should clear and you will see the current time displayed with a flashing digit in the hours field.
- 6-6-2** Press the **MAX button** to decrement the value, or press the **Back light button** to increment the value of the flashing digit as needed.
- 6-6-3** Press the **F/S button** to select the next digit to the right, or press the **A/C button** to select the next digit to the left of the currently selected (flashing) digit. Use the **MAX** and **Backlight** buttons as needed to adjust the values of each digit.
- 6-6-4** After setting the time, press the **F/S button** to move past the right most digit (Seconds) and the display will change to show the date in MM-DD-YY format. As with setting the time in 6-6-2 and 6-6-3, use the **A/C** and **F/S** buttons to select the digits to edit, and the **MAX** and **Backlight** buttons to decrement or increment the value
- 6-6-5** When finished, press the **REC** button to store the time and date settings and return the meter to measurement mode.

## 7. Battery Replacement

If the meter does not power on normally or the low battery icon  appears on the LCD display, replace the batteries as soon as possible. Use a screwdriver to unscrew the back battery compartment cover and install 4 x AA batteries. Reinstall the batter compartment cover and screw before use.

## 8. Operating Precautions

- 8-1** Wind blowing across the microphone could cause additional extraneous noise. When using the instrument outdoors or in the presence of wind/airflow please ensure the sponge ball is fitted to achieve better measurement results.
- 8-2** Do not store or operate the instrument at high temperature or in a high humidity environment.
- 8-3** Keep microphone dry and avoid severe vibration.
- 8-4** When not in use for prolonged periods it is recommended that you remove the battery.

## 9. Tripod Mount

Mounting the meter via a camera tripod (not supplied) will increase the stability & accuracy of the meter readings by eliminating any sound waves reflected from the user.

## 10. DC Output

- 10-1** Use the DC output connector and output voltage lead wires to connect the sound level meter to a datalogger, digital multimeter, or oscilloscope for recording sound level pressure measurements. The output voltage scaling is 33mV/dB referenced to the "floor" or threshold detection level of 30dB. Thus, a measurement of 94dB would result in an output of approximately 2.1V DC = (94dB - 30dB) x 33mV/dB).

## 11. AC Output

- 11-1** Use the AC output connector and output voltage lead wires to connect the sound level meter to a datalogger, digital multimeter, or oscilloscope for recording sound level pressure measurements. The output voltage scaling is 2.0VAC (RMS) a full scale (130dB). This output is an unamplified signal from the input transducer circuit, so the output AC voltage level scales logarithmically with increasing sound pressure level (SPL). For each 20dB increase in SPL, the AC voltage output increases by a factor of 10. For example, at 90dB, the output is approximately 18mV and at 110dB, the output is approximately 180mV.

## 12. Trouble Shooting

- 12-1** Pressing the power button to turn on the unit and the display doesn't turn on, or display clears/displays nothing:
- Check to ensure that the batteries are in good condition, properly installed with good contact to the pins and with the correct polarity.
  - Remove batteries for one minute and re-install.
  - Replace the batteries with new ones.
- 12-2** For all other issues please contact your supplier.

## Warranty

Triplett / Byte Brothers extends the following warranty to the original purchaser of these goods for use. Triplett warrants to the original purchaser for use that the products sold by it will be free from defects in workmanship and material for a period of (3) three years from the date of purchase.

This warranty does not apply to any of our products which have been repaired or altered by unauthorized persons in any way or purchased from unauthorized distributors so as, in our sole judgment, to injure their stability or reliability, or which have been subject to misuse, abuse, misapplication, negligence, accident or which have had the serial numbers altered, defaced, or removed. Accessories, including batteries and fuses, are not covered by this warranty.

To register a claim under the provisions of this warranty, please contact the distributor from which you purchased the product from for warranty consideration.

**ALL WARRANTIES IMPLIED BY LAW ARE HEREBY LIMITED TO A PERIOD OF THREE YEARS FROM DATE OF PURCHASE, AND THE PROVISIONS OF THE WARRANTY ARE EXPRESSLY IN LIEU OF ANY OTHER WARRANTIES EXPRESSED OR IMPLIED.**

The purchaser agrees to assume all liability for any damages and bodily injury which may result from the use or misuse of the product by the purchaser, his employees, or others, and the remedies provided for in this warranty are expressly in lieu of any other liability Triplett may have, including incidental or consequential damages.

Some states (USA ONLY) do not allow the exclusion or limitation of incidental or consequential damages, so the above limitation or exclusion may not apply to you. No representative of Triplett / Byte Brothers or any other person is authorized to extend the liability of Triplett in connection with the sale of its products beyond the terms hereof.

Triplett / Byte Brothers reserves the right to discontinue models at any time, or change specifications, price or design, without notice and without incurring any obligation.

This warranty gives you specific legal rights, and you may have other rights which vary from state to state.



**Part Number: 3550**

Made in China

**84-910**  
**1/15**