

IRTC600 Thermal Imaging Camera (220 x 160)

Hot or cold spots quickly indicate where potential issues are located

Features:

- 220 x 160 pixels (35,200) with $\leq 70\text{mk}$ Thermal Sensitivity (NETD)
- Infrared/Visible Light/Fusion display modes
- Selectable degree of fusion between IR and visible image (0%,25%,50%,75% and 100%) for easier viewing
- 3.2" (81.3mm) fixed focus, color TFT display with 320 x 240 resolution
- Center spot and high/low temperature tracking on image
- Easy-to-use menu
- Real time clock/calendar
- On-screen image index for viewing videos and pictures
- Auto power off with disable
- 4 Languages (English, Italian, German, Chinese)
- USB interface for transferring video (mp4), images (jpg) and recharging
- Includes rechargeable 3.7V Lithium Ion battery, USB cable, AC adapter/charger, software, and pouch case

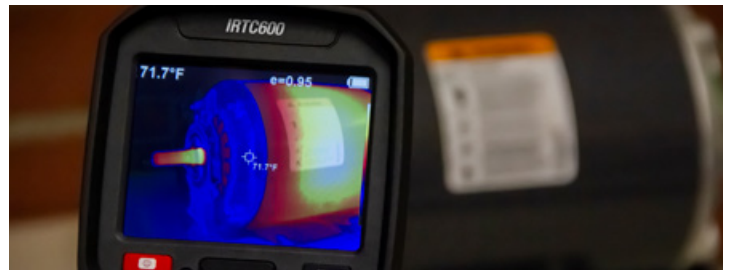
Specifications

Temperature Range	-4 to 572°F (-20 to 300°C)
IR Resolution	220 x 160 pixels (35,200)
Thermal Sensitivity/NETD	$\leq 70\text{mk}$
Basic Accuracy	$\pm 2\%$ or $\pm 2^\circ\text{C}$
Response Time	10ms
FOV	35° x 26°
Minimum Focus Distance	5.9" (0.15m) Fixed Focus
Image Frequency	9Hz
Spectral Response	8-14 μm
Emissivity	Adjustable 0.01 to 1.0
Visible Light Resolution	640 x 480
Image Display Mode	Infrared/Visible Light/Fusion
Screen Size	3.2" (81.3mm) Color TFT
Display Resolution	320 x 240 pixels
Color Display Palettes	Iron Oxide Red, Rainbow, Cold Color, Black & White, White & Black
Video/Image Storage	(Built-in 3G) MP4/JPG
Image Gallery	Yes
PC Interface	USB
Power	Rechargeable 3.7V Lithium Ion
Dimensions / Weight	8.8 x 4.1 x 3.5" (223 x 105 x 90mm) / 13.7oz (389g)



Applications:

For preventative maintenance and troubleshooting of electrical and HVAC systems, mechanical breakdowns, water leaks and moisture buildup, heat loss from missing insulation and faulty windows/doors, automotive repair and other places to find leaks and hot spots



Ordering Information:

IRTC600 Thermal Imaging Camera (220 X 160)

