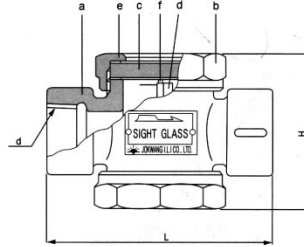


Flow Sight

Double Sight Glass (Screwed End)

JOKWANG

Model JDG-NT11[JKD-G1] is device to be used visually to check the flow condition at the both sides through the transparent inside. the oscilating amount of the flapper responding to fulx is to depend upon the flow condition enough to check easily. Specially hardened glass and stainless steel flapper ensures to endure over load, reverse flow and enen water hammer.



Specifications

Working pressure : Max. 10kgf/cm²{1.0MPa}
 Working temperature : Max. 220°C
 Applicable fluid : Condensate, water and liquid
 Connection : PT Screwed
 (NPT, BSP Screwed types are available)

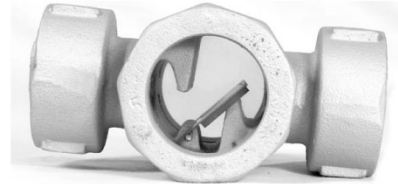
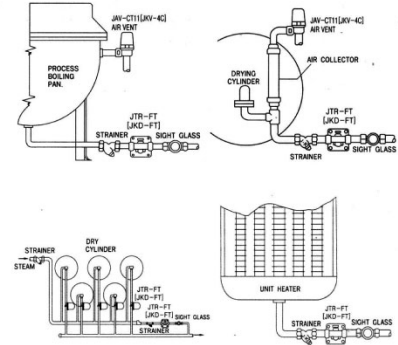
Dimensions

Size mm(inch)	15(1/2")	20(3/4")	25(1")	32(1 1/4")	40(1 1/2")	50(2")
Part						
d	PT 1/2"	PT 3/4"	PT 1"	PT 1 1/4"	PT 1 1/2"	PT 2"
L	126	126	126	155	155	161
H	96	96	96	106	106	123
Wt.(kg)	1.6	1.7	1.8	2.8	2.8	3.6
Connection	PT Screwed					

Materials (Standard)

No	Part	Material
a	Body	Cast iron
b	Cap	Cast iron
c	Sight Glass	Glass, heat treated
d	Flapper	Stainless steel
e	Gasket	Non asbestos
f	Pin	Stainless steel

Installation example with related periphery



* Values given for information. Changes possible.